

A MINOR LAND PARTITION IN THE 1/4 NW 1/4 OF SEC. 15, T28S, R6W, W.M.

FILED TF

MAR 13 1987 TF

COUNTY SURVEYOR
DOUGLAS COUNTY, ORE. TF

LAND OWNER:
LANCE SHORT
P.O. BOX 80
WINCHESTER, OR. 97495

SURVEYED BY:
DONALD A. BENTZ, INC.
P.O. BOX 901
WINCHESTER, OR. 97495

COUNTY SURVEYORS FILE DATA
DO NOT REMOVE FROM OFFICE

M 103-52 A

NARRATION:

ALL MONUMENTS WERE ESTABLISHED ON SURVEY FILED M102-60. FIELD WORK TO VERIFY LOCATION ONLY. TWO MONUMENTS AT SE CORNER SET AT RECORD DISTANCE AND BY PROJECTION OF EASTERLY LINE.

COMPUTATIONS: D. BENTZ

DRAFTING: D. STULL

APPROVALS:

Jerry T. Monahan 3-13-87
DOUGLAS COUNTY SURVEYOR
Keith L. Cubic 3/4/87
DOUGLAS COUNTY PLANNING

REGISTERED
PROFESSIONAL
LAND SURVEYOR

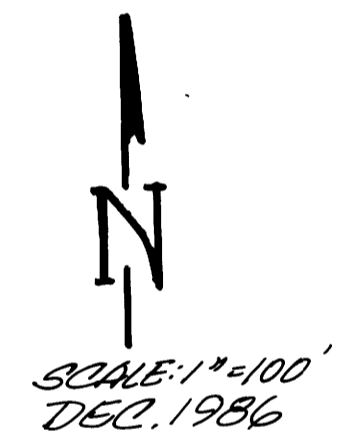
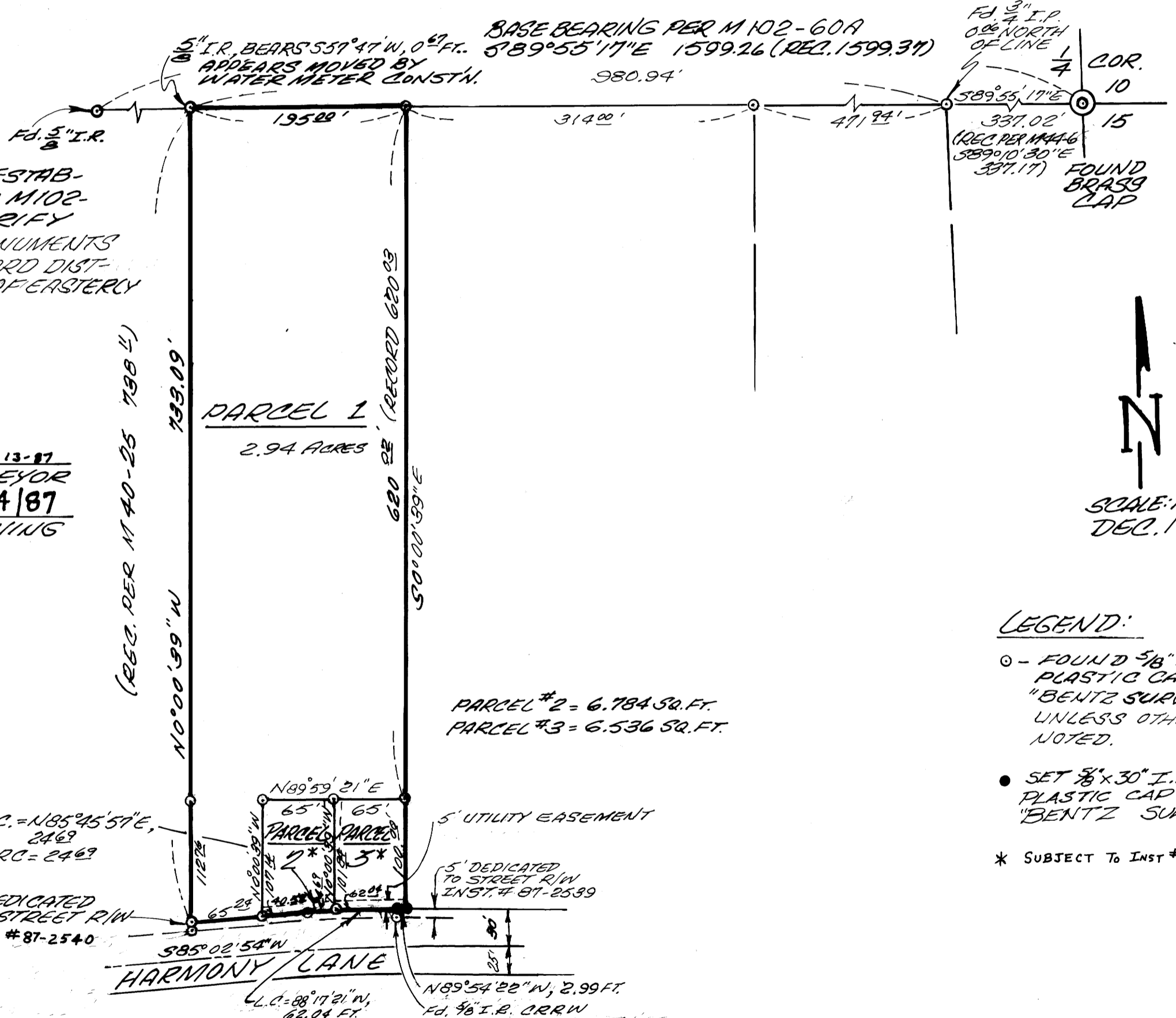
OREGON
JULY 12, 1962
DONALD A. BENTZ
839

SEWER: GREEN SANITARY DISTRICT

WATER: ROBERTS CREEK WATER DISTRICT

POWER: PACIFIC POWER

ZONING: R-1



LEGEND:

- - FOUND 5/8" I.R. WITH PLASTIC CAP M.K.D. "BENTZ SURV., INC.", UNLESS OTHERWISE NOTED.
- SET 3/8" x 30" I.P. WITH PLASTIC CAP M.K.D. "BENTZ SURVEY INC."
- * SUBJECT TO INST # 87-2331

Q DATA
Δ = 5°02'44"
R = 954.93'
L = 84.09'

M 103-52 A