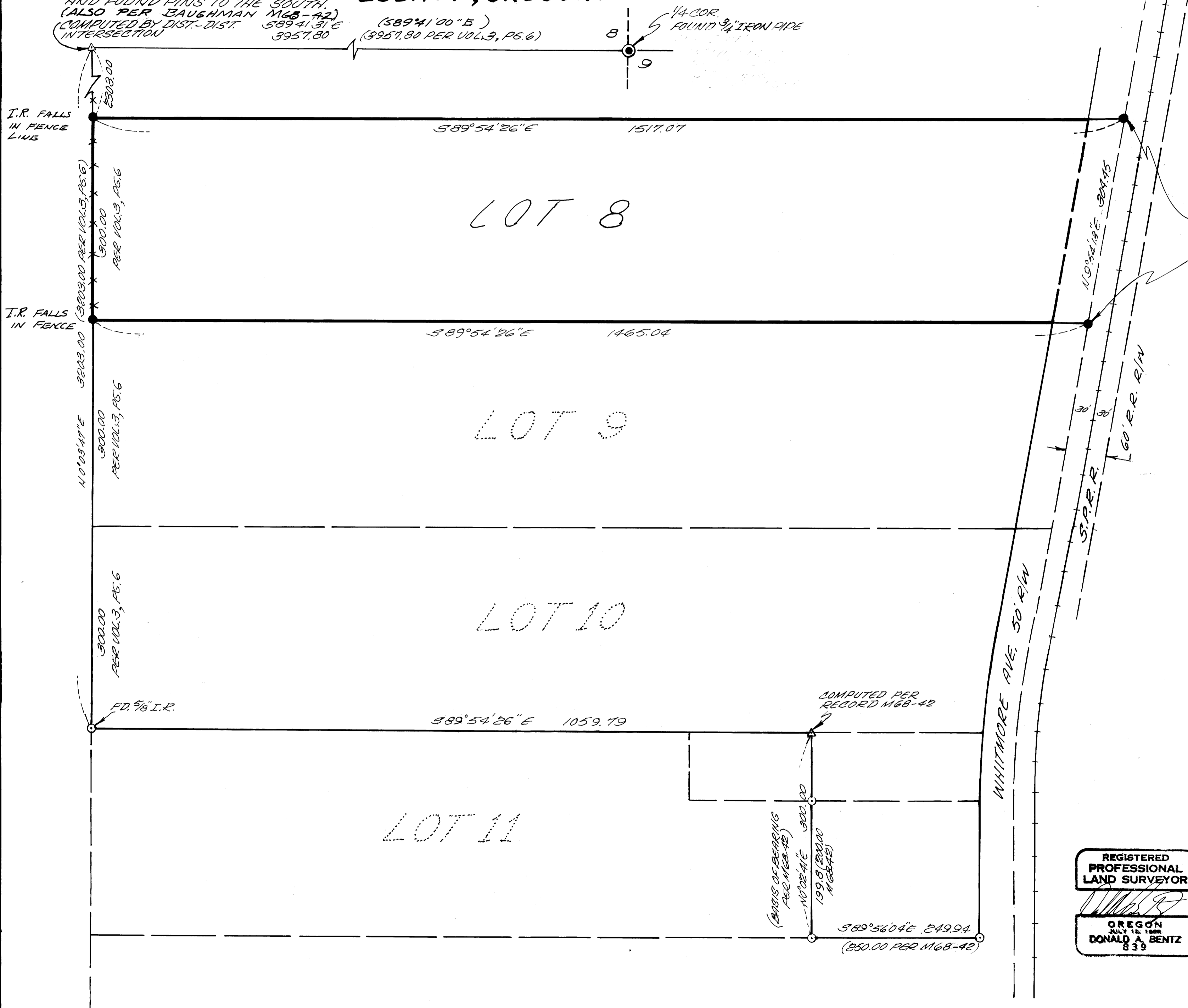


COUNTY SURVEYORS FILE DATA
DO NOT REMOVE FROM OFFICE

A SURVEY FOR DOUG HOWELL OF LOT 8, SL & W CO., PLAT G,
IN THE SE 1/4 & SW 1/4 OF SECTION 8 AND THE NE 1/4 & NW 1/4 OF
SECTION 17, TOWNSHIP 25 SOUTH, RANGE 5 WEST, W.M., DOUGLAS
COUNTY, OREGON.

NOTE:
CORNER LOOKED FOR AND NOT FOUND.
WE FELT BEST METHOD OF DUPLI-
CATING SURVEY WAS USING DIST-
DIST. INTERSECTION FROM 1/4 CORNER
AND FOUND PINS TO THE SOUTH.
(ALSO PER BAUGHMAN M68-42)
COMPUTED BY DIST-DIST. 589°41'31"E
INTERSECTION 3957.80

(589°41'00"E)
(3957.80 PER VOL.3, P.5.6)



FILED *[Signature]*
FEB 19 1987 TF
COUNTY SURVEYOR
DOUGLAS COUNTY, ORE. TF

MONUMENTED
FOR LINE ONLY
NOT TRUE LOT
CORNERS.

N
SCALE: 1"=100'
FEB. 1987

- LEGEND:
- - SET 5/8" x 30" I.R./PLASTIC
ZAP MK'D. "BENTZ SURV., INC."
 - - FOUND 1/2" IRON ROD UNLESS
OTHERWISE NOTED.
 - ⊙ - FOUND 3/4" IRON PIPE
(CORNER TIE)
 - △ - COMPUTED POINT

SURVEYED BY: DONALD A. BENTZ, INC.
P.O. BOX 901
WINCHESTER, OR.
971495

NARRATIVE:
LOTS 9, 10, & 11 WERE GIVEN FULL WIDTH
AS SHOWN. THE TWO MOST WESTERLY
MONUMENTS OF LOT 8 WERE POSITIONED
AT RECORD DISTANCE FROM THE FOUND
5/8" I.R. @ THE NW CORNER OF LOT 11. THE
NORTH AND SOUTH LINES OF LOT 8 WERE
PLACED PARALLEL TO THE NORTH LINE
OF LOT 11. THE TWO MOST EASTERLY
MONUMENTS WERE SET 30.00 FT. FROM
THE C. OF THE R.R. TRACKS FOR LINE
REFERENCE TO THE SAID NORTH &
SOUTH LINES OF LOT 8.

FIELD CREW: BOB COOK
BOB BROWNING
GREG LANG
EQUIP: WILD T1 + RED I DISTANCE-
METER.
DRAFTING: DON STULL
COMPS: GREG LANG

REGISTERED
PROFESSIONAL
LAND SURVEYOR
[Signature]
OREGON
JULY 12 1988
DONALD A. BENTZ
839

MAP FILE M103-38

MAP M103-38