

COUNTY SURVEYING FILE DATA  
DO NOT REMOVE FROM OFFICE

# LOT SURVEY

IN LOT 2, JUNCTION SUBDIVISION  
IN THE NE 1/4 SEC.21, T.28 S., R.6W,W.M.

FILED *JK*  
FEB 5 1987 TF  
COUNTY SURVEYOR  
DOUGLAS COUNTY, OREGON TF

JANUARY 1987 SCALE: 1" = 50'

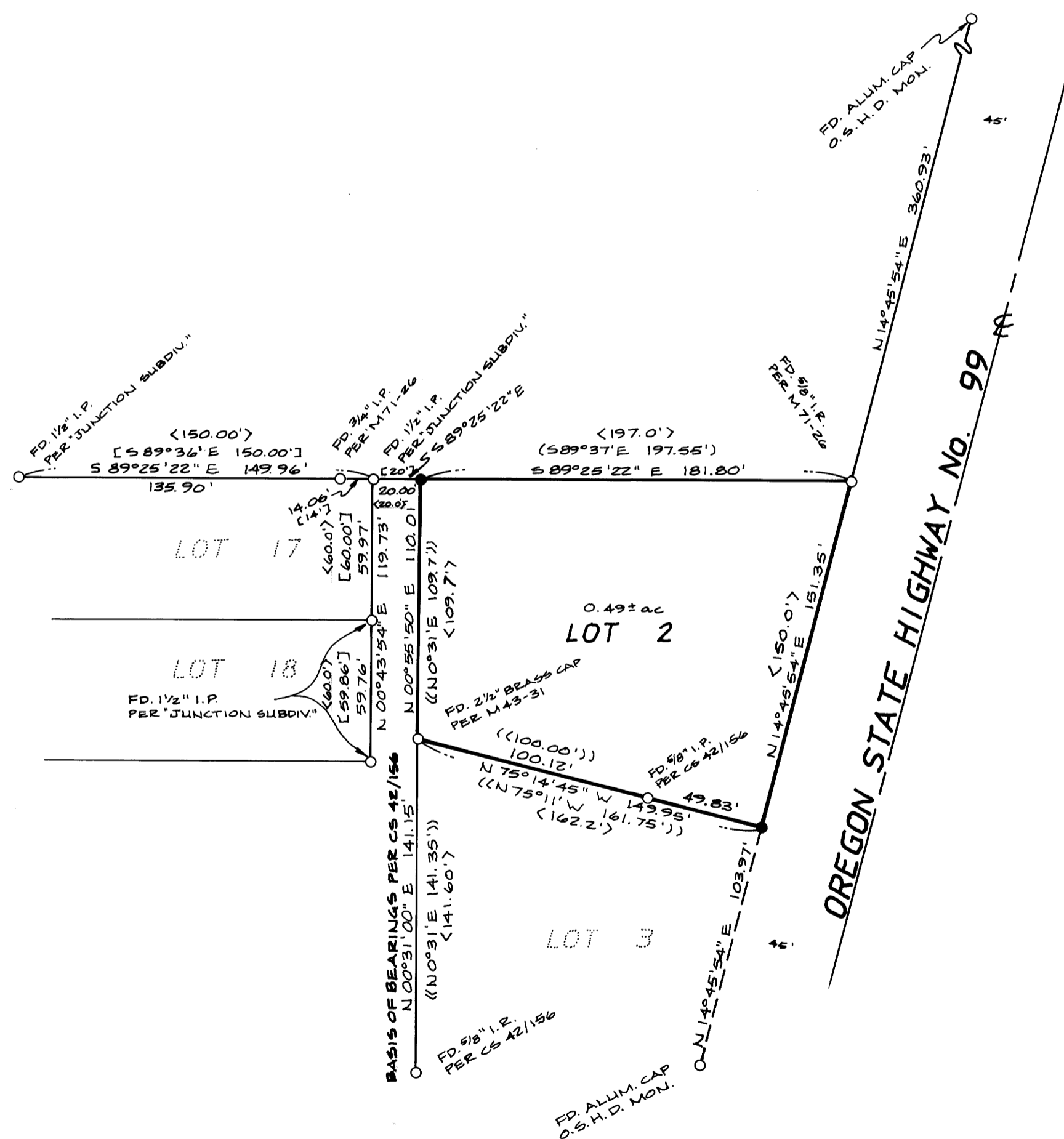
FOR: RON'S OIL COMPANY

SURVEY BY: AA SURVEYING SERVICE, INC.  
2566 N.E. STEPHENS ST.  
ROSEBURG, OREGON 97470  
TEL.(503) 672-2096

## NARRATIVE

PURPOSE: TO LOCATE AND MONUMENT THE CORNERS OF LOT 2, JUNCTION SUBDIVISION, VOL. 6, PG. 18, PLAT RECORDS OF DOUGLAS COUNTY, OREGON.

PROCEDURE: I FOUND THE MONUMENTS AS SHOWN ON THE ANNEXED MAP. I USED THE FOUND 1 1/2" IRON PIPE AT THE NORTHEAST CORNER OF LOT 17 AND THE FOUND 5/8" IRON ROD ON THE WESTERLY R/W LINE OF HWY 99, MARKING THE NORTHEAST CORNER OF LOT 2, TO ESTABLISH THE NORTH LINE OF LOT 2. FROM THE NORTHEAST CORNER OF LOT 17 I HELD THE RECORD DISTANCE OF 20.00 FEET TO ESTABLISH AND MONUMENT THE NORTHWEST CORNER OF LOT 2 AS SHOWN ON THE ANNEXED MAP. USING THE FOUND O.S.H.D. R/W MONUMENTS SHOWN ON THE ANNEXED MAP, I ESTABLISHED THE LOCATION OF THE WESTERLY R/W LINE OF HWY 99. I ESTABLISHED THE POSITION OF THE SOUTHEAST CORNER OF LOT 2 BY PROJECTING THE LINE FROM THE FOUND 2 1/2" BRASS CAP AT THE SOUTHWEST CORNER OF LOT 2 AND THE FOUND 5/8" IRON PIPE ON THE SOUTH LINE OF LOT 2 TO ITS INTERSECTION ON THE WESTERLY R/W LINE OF HWY 99 AND MONUMENTED THE CORNER AT THIS POINT.



### LEGEND

- FOUND MON. AS NOTED HEREON
- SET 5/8" x 30" IRON ROD W/ PLASTIC CAP MKD. "AA SURVEYING INC."
- ( ) RECORD PER M 43-31
- [ ] RECORD PER M 71-26
- ( ) RECORD PER CS 42/156
- < > RECORD PER PLAT OF "JUNCTION SUBDIVISION" VOL. 6, PG. 18

REGISTERED  
PROFESSIONAL  
LAND SURVEYOR

*Herman A. Pieske*

OREGON  
JULY 14, 1978  
HERMAN A. PIESKE  
1651

M103-33