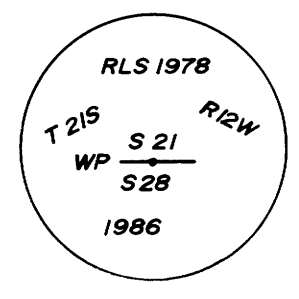
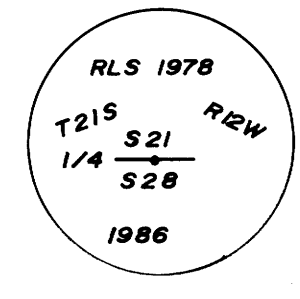
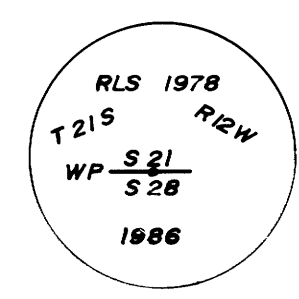
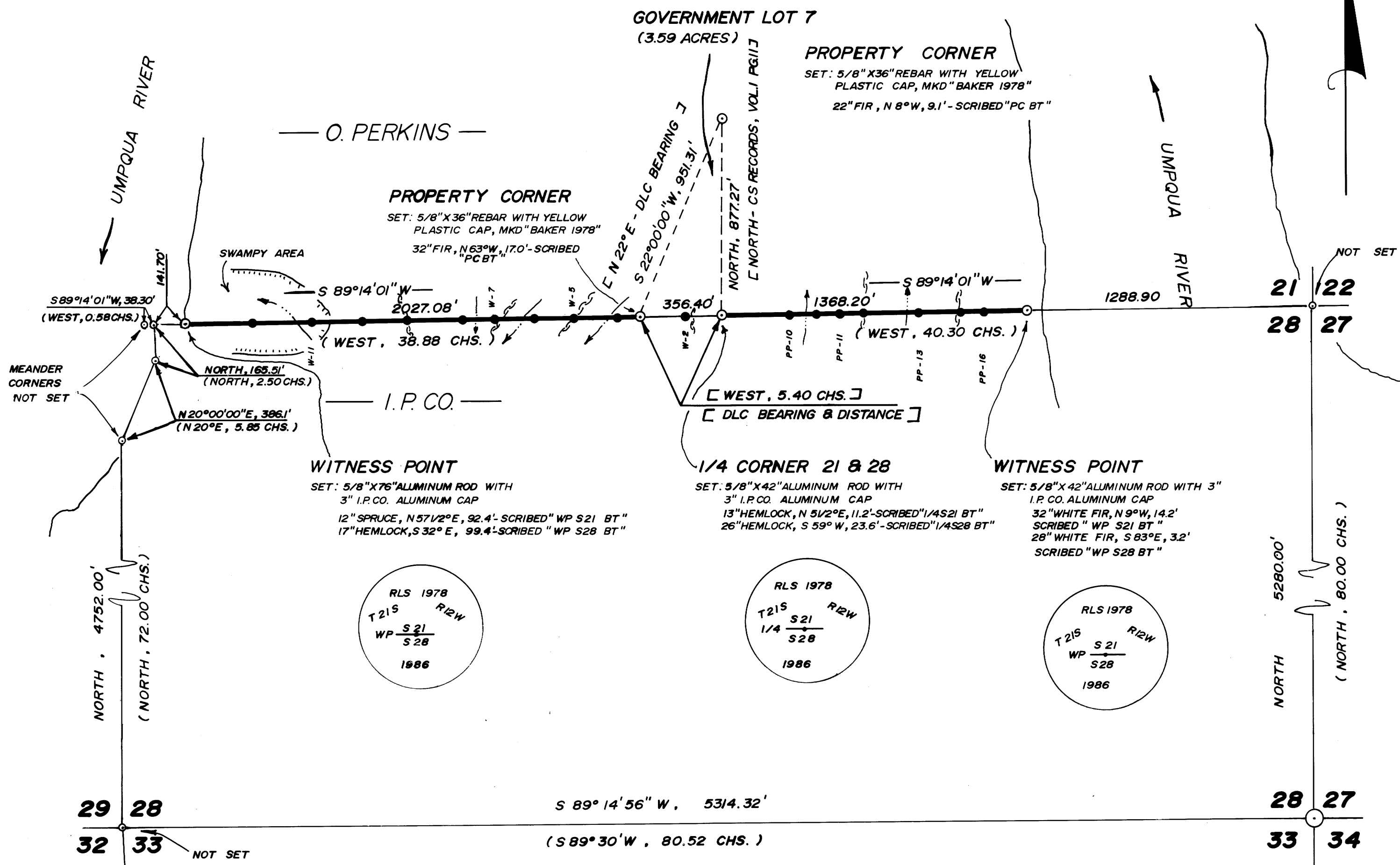


**NARRATIVE**

This survey was performed from September through December, 1986, by Daniel W. Baker of Peel Baker Land Surveying, Inc., 1262 Lawrence St., Suite 4, Eugene, Oregon. The purpose of this survey was to locate and mark the boundary line between International Paper Company and Oliver Perkins in Sections 21 and 28, T21S, R12W, W.M. This survey was performed using a Kern K1MT theodolite and a DM 502 EDM. Random transit traverses with a minimum error of closure of 1'/20,000' were run between found corners for control. Bearings were based on a solar observation taken in the NE 1/4 of Section 28. Offsets from the random traverse line to the true property line were calculated and used to determine the position of the true line. The true property line was marked in the field by blazing trees (blazes painted red) on both sides of true line and by 1/2" by 60" rebars set at random intervals, approximately (± 1 foot) on the true property line. A 4" x 8" yellow sign, marked "Property Line--International Paper Co.--Gardiner, Oregon," was attached to each rebar. Each rebar was referenced by a bearing and distance tie to a nearby tree. A yellow reference sign, marked with the bearing and distance from the sign to the rebar, was nailed low on said tree. A white magnetic locator was buried approximately one foot deep and 1/2 foot distant from (on line) each rebar. Also, white magnetic locators were buried (approximately one foot deep and approximately on true line) at various points along the line. The southeast section corner of Section 28 and the southwest section corner of Section 33 were tied and used for control. The southeast section corner of Section 28 is a corner which has been recognized by other surveyors and local residents as the corner point, but there is no history on the corner monument. This corner was used to determine the position of the northeast section corner, which falls in the river, by going north 80.00 chains as per the original (1857) plat. The southwest section corner of Section 28 was determined by using a two point method (distance-distance intersection) from the only existing corners in the area, the southwest section corner of Section 33 as re-established in M102-71 and the southeast section corner of Section 28. From the position for the southwest section corner of Section 28, the meander corners on the west line and north line of Section 28 were determined by record bearing and distance. The 1/4 corner between Sections 21 and 28 was set at proportionate distance between the determined positions of the northeast section corner and the meander corner between Sections 21 and 28 on the west side of the section. The southwest corner of Government Lot 7 was set at record distance west from the 1/4 corner between Sections 21 and 28. The northerly corner of Government Lot 7 was set at the point of intersection of a line running record bearing (N 22° 00' E) from the southwest corner of Government Lot 7 and record bearing (north) from the 1/4 corner between Sections 21 and 28. All corners set in this survey were monumented as shown on this plat and marked with standard markings as per the 1973 Manual and also marked "PLS 1978."



**LOCATION OF LINE POINTS**

STA.	DISTANCE	DIRECTION TO NEAREST CORNER
<b>WITNESS PT. (EAST SIDE)</b>		
PP-16 (MAG.)	201'	EAST TO W.P.
PP-15	293'	EAST TO W.P.
PP-13	486'	EAST TO W.P.
PP-12	631'	WEST TO 1/4 COR.
PP-11	524'	WEST TO 1/4 COR.
(MAG. ONLY)	420'	WEST TO 1/4 COR.
PP-10	256'	WEST TO 1/4 COR.
<b>1/4 CORNER SEC. 21 &amp; 28</b>		
W-2	159'	EAST TO 1/4 COR.
<b>PROPERTY CORNER</b>		
W-4 (MAG.)	457'	EAST TO 1/4 COR.
W-5	651'	EAST TO 1/4 COR.
W-6 (MAG.)	828'	EAST TO 1/4 COR.
W-7	1005'	EAST TO 1/4 COR.
W-8	1150'	EAST TO 1/4 COR.
W-9	992'	WEST TO W.P.
W-10	788'	WEST TO W.P.
W-11	564'	WEST TO W.P.
(MAG.)	300'	WEST TO W.P.
<b>WITNESS PT. (WEST SIDE)</b>		

**SECTION CORNER 4, 5, 32, & 33**

FOUND: 3" I.P. CO. ALUMINUM CAP "L.S. 2168" (M102-71)  
 38" SPRUCE, N 46° E, 90.4'  
 26" FIR, S 68 1/2° E, 33.7'  
 23" FIR, S 54° W, 81.7'  
 31" SPRUCE, N 49° W, 77.2'

NOTE: CORNER FALLS IN RIDGE ROAD, 8" BELOW SURFACE

**SECTION CORNER 27, 28, 33, & 34**

FOUND: 1" IRON ROD (4" BELOW GROUND AND UNDER CAR - M84-24)  
 SOUTHEAST CORNER OF CHIMNEY  
 N 40 3/4° W, 178.8' (N 40 3/4° W, 178.7' - M84-24)  
 BROKEN POWER POLE, S 38° W, 76.0'  
 (S 36 1/4° W, 75.9' - M84-24)

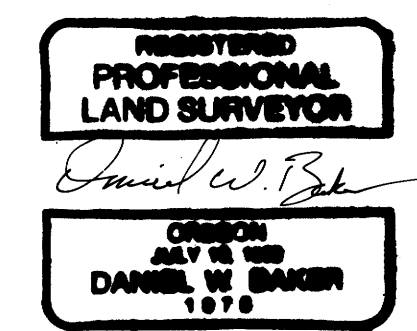
SET: SPIKE IN NEW POWER POLE, AE34D  
 S 39° W, 61.1'

**BASIS OF BEARING:** SOLAR OBSERVATION IN NE 1/4 OF SECTION 28

**SCALE:** 1" = 400'

FOR ALL BEARING TREES MARKED IN THIS SURVEY, DISTANCES WERE MEASURED TO A 7" SPIKE DRIVEN LOW IN THE SIDE OF THE TREE, BEARINGS ARE MAGNETIC, VAR. 20°

- CORNERS FOUND
- CORNERS SET THIS SURVEY
- CORNERS DETERMINED (NOT SET) FROM GLO RECORD
- LINE POINTS (1/2" X 60" REBAR OR MAGNET ONLY)
- BLAZED PROPERTY LINE (BLAZES PAINTED RED)
- - - LINE MARKED WITH RIBBON ONLY
- ( ) GLO BEARING AND DISTANCE - 1857
- ← CREEK
- ~ RIDGE



**SURVEY IN**  
**SECTION 21 & 28, T21S, R12W, W.M.**  
**DOUGLAS COUNTY, OREGON**  
 FOR  
**INTERNATIONAL PAPER COMPANY**  
 BY  
**PEEL BAKER LAND SURVEYING, INC.**  
 DECEMBER 15, 1986

(SEE APPENDIX MAP M102-71)