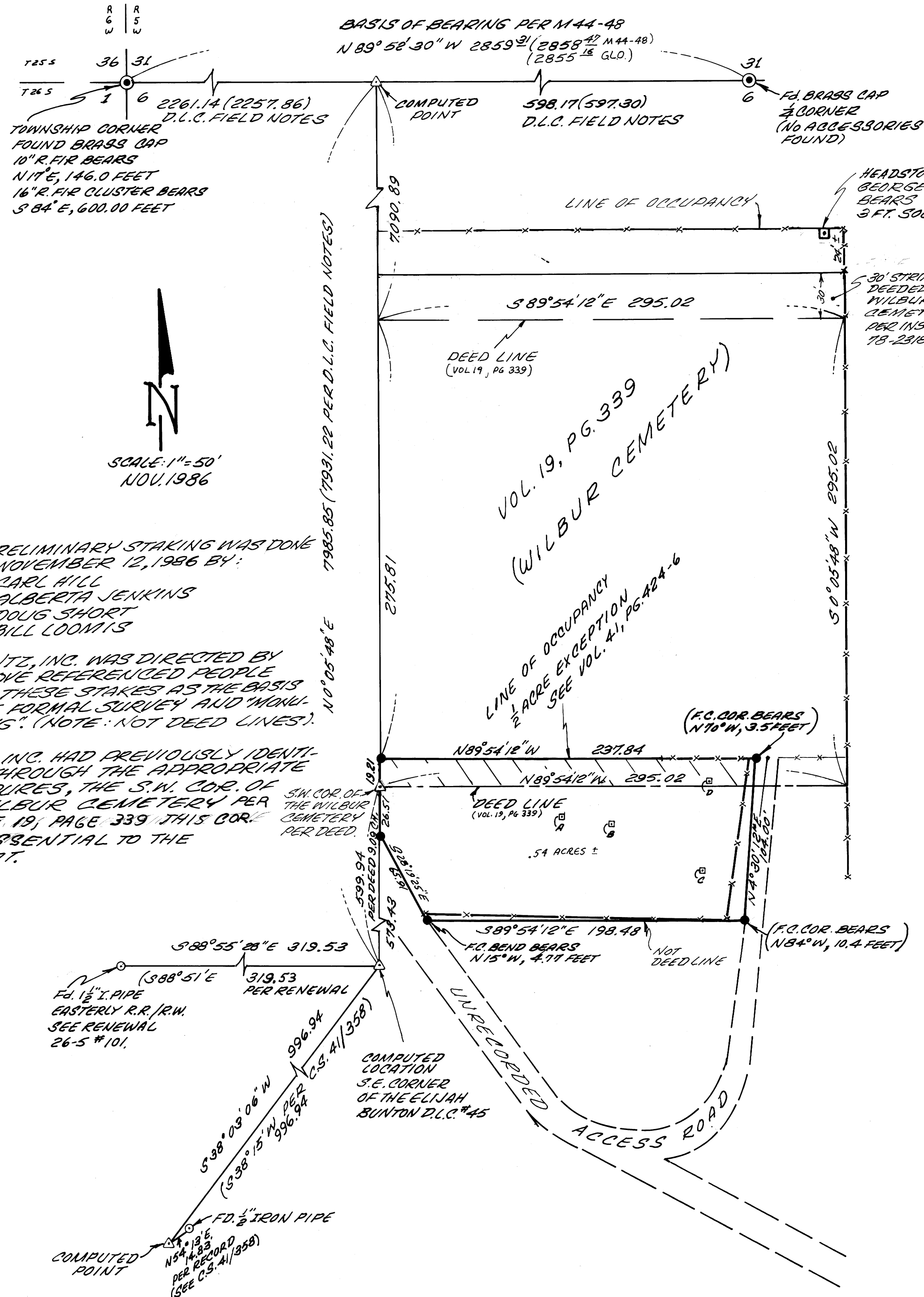
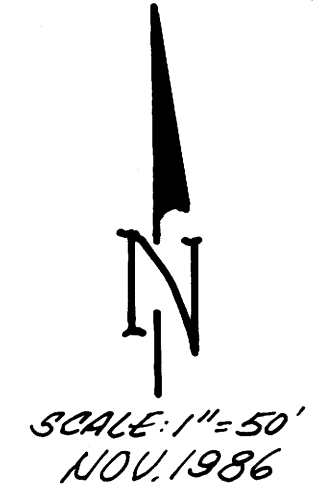


FILED *js*  
FEB 5 1987 TF  
COUNTY SURVEYOR TF  
DOUGLAS COUNTY, OREGON

M103-30



**A SURVEY FOR BILL LOOMIS & CARL HILL  
IN THE NW 1/4 SECTION 7, TOWNSHIP 26 SOUTH,  
RANGE 5 WEST, WILLAMETTE MERIDIAN,  
DOUGLAS COUNTY, OREGON; ALSO LOCATED  
IN THE ELIJAH BUNTON DONATION LAND  
CLAIM #45.**



NOTE: PRELIMINARY STAKING WAS DONE  
ON NOVEMBER 12, 1986 BY:  
CARL HILL  
ALBERTA JENKINS  
DOUG SHORT  
BILL LOOMIS

DON BENTZ, INC. WAS DIRECTED BY  
THE ABOVE REFERENCED PEOPLE  
TO USE THESE STAKES AS THE BASIS  
FOR THE FORMAL SURVEY AND "MONU-  
MENTING". (NOTE: NOT DEED LINES).

BENTZ, INC. HAD PREVIOUSLY IDENTI-  
FIED, THROUGH THE APPROPRIATE  
PROCEDURES, THE S.W. COR. OF  
THE WILBUR CEMETERY PER  
VOLUME 19, PAGE 339 THIS COR.  
WAS ESSENTIAL TO THE  
PROJECT.

**NARRATIVE:**

SURVEY TO MONUMENT THE PERIMETER OF THE  
F.R. HILL FAMILY BURIAL GROUND - SEE VOL. 41,  
PG. 424-6 (1/2 ACRE RESERVED FOR REED-  
HILL CEMETERY).

MONUMENTS WERE PLACED NEAR THE  
EXISTING LINES OF OCCUPANCY AS  
REQUESTED BY THE PARTIES IN-  
VOLVED. THE TWO MOST WESTERLY  
MONUMENTS WERE PLACED ON THE  
EAST LINE OF D.L.C. #45.

FIELD CREW: D. DELATTE, B. COOK, G. LANG  
DRAFTING: DON STULL  
EQUIPMENT: WILD T1 & RED 1 E.D.M.  
COMPUTATIONS: GREG LANG

**LEGEND:**

- SET 3/8" x 30" IRON ROD WITH PLASTIC  
CAP MKD. "BENTZ SURVEY, INC."
- FOUND AS NOTED
- △ COMPUTED POINT
- HEADSTONE:
  - A. CRAIG I. SHORT
  - B. GEORGE SHORT III
  - C. CARL M. & FLORENCE HILL
  - D. MINNIE - WIFE OF W.M. LOOMIS

SURVEYED BY: DONALD A. BENTZ, INC.  
P.O. BOX 901  
WINCHESTER, OR.  
97495

REGISTERED  
PROFESSIONAL  
LAND SURVEYOR

OREGON  
JULY 12, 1909  
DONALD A. BENTZ  
830

MAP FILE M103-30