

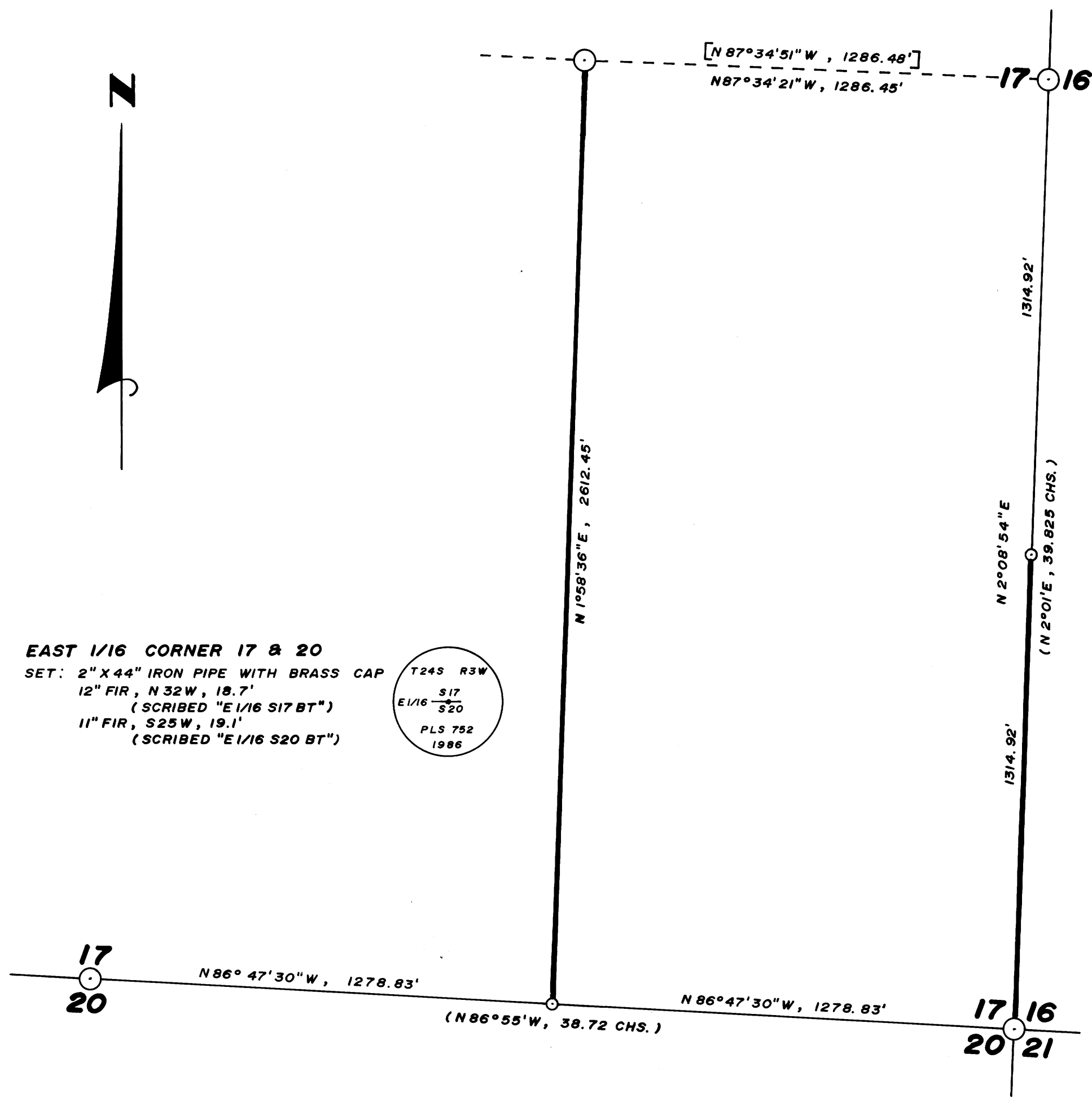
M 103-29

CENTER-EAST 1/16 CORNER

FOUND: 5/8" REBAR
 15" FIR, N41E, 19.8' (CLOSED FACE)
 17" FIR, S59-3/4E, 13.3' (CLOSED FACE)

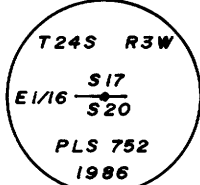
1/4 CORNER 16 & 17

FOUND: 1" IRON PIPE WITH G.L.O. BRASS CAP "1950"
 "W" NAIL IN SIDE OF 42" FIR STUMP, N41-1/4W, 88.5'
 (WEYERHAEUSER TAG)



EAST 1/16 CORNER 17 & 20

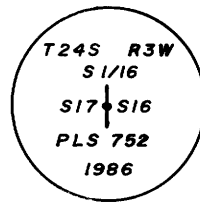
SET: 2" X 44" IRON PIPE WITH BRASS CAP
 12" FIR, N 32W, 18.7'
 (SCRIBED "E 1/16 S17 BT")
 11" FIR, S25W, 19.1'
 (SCRIBED "E 1/16 S20 BT")



SOUTH 1/16 CORNER 16 & 17

SET: 2" X 44" IRON PIPE WITH BRASS CAP
 19" FIR, N41E, 28.6'
 (SCRIBED "S 1/16 S16 BT")
 23" FIR, N77W, 16.2'
 (SCRIBED "S 1/16 S17 BT")

NOTE: 1" IRON PIPE (BELIEVED SET BY L. CALDER IN 1950 SURVEY)
 BEARS N31°21'40"W, 11.09'



REGISTERED
 PROFESSIONAL
 LAND SURVEYOR

Donald L. Peel

OREGON
 JULY 8, 1966
 DONALD L. PEEL
 752

FOR BEARING TREES SCRIBED THIS SURVEY, THE DISTANCE WAS MEASURED TO A "W" NAIL IN THE LOWER BLAZE AND THE BEARINGS ARE MAGNETIC, VAR. 20°

BASIS OF BEARING: SOLAR OBSERVATION

SCALE: 1" = 300'

- CORNERS FOUND
- CORNERS SET THIS SURVEY
- PROPERTY LINE BLAZED
- () 1950 G.L.O. RESURVEY RECORD DATA
- [] RECORD DATA, C.S. M47-61

1/4 CORNER 17 & 20

FOUND: 1" IRON PIPE WITH G.L.O. BRASS CAP "1950"
 57" FIR, N83E, 65.2' (CLOSED FACE)
 15" MADRONE STUMP, S 80-1/2W, 50.9'

SECTION CORNER 16, 17, 20, 21

FOUND: 2" IRON PIPE WITH G.L.O. BRASS CAP "1950"
 NOTE: 3/4" IRON PIPE (BELIEVED SET BY L. CALDER IN 1950 SURVEY) BEARS N31°18'E, 4.73'

**SURVEY IN
 SE 1/4 SECTION 17, T24S, R3W, W.M.
 DOUGLAS COUNTY, OREGON**

FOR
WEYERHAEUSER COMPANY
 BY
PEEL BAKER LAND SURVEYING INC.
 DECEMBER 29, 1986

COUNTY SURVEYORS FILE DATA
 DO NOT REMOVE FROM OFFICE

MAP FILE M103-29