

PROPERTY SURVEYORS FILE DATA  
DO NOT REMOVE FROM OFFICE

# SURVEY TO SET PROPERTY CORNERS

IN THE NE 1/4 SW 1/4 SEC 27, T 30 S, R 5 W, W.M.

JANUARY 1987

SCALE : 1" = 50'

FOR: RAY HANKS

BY: AA SURVEYING SERVICE, INC.  
2566 N.E. STEPHENS ST.  
ROSEBURG, OREGON  
TEL: (503) 672-2096

FILED

FEB 3 1987 TF

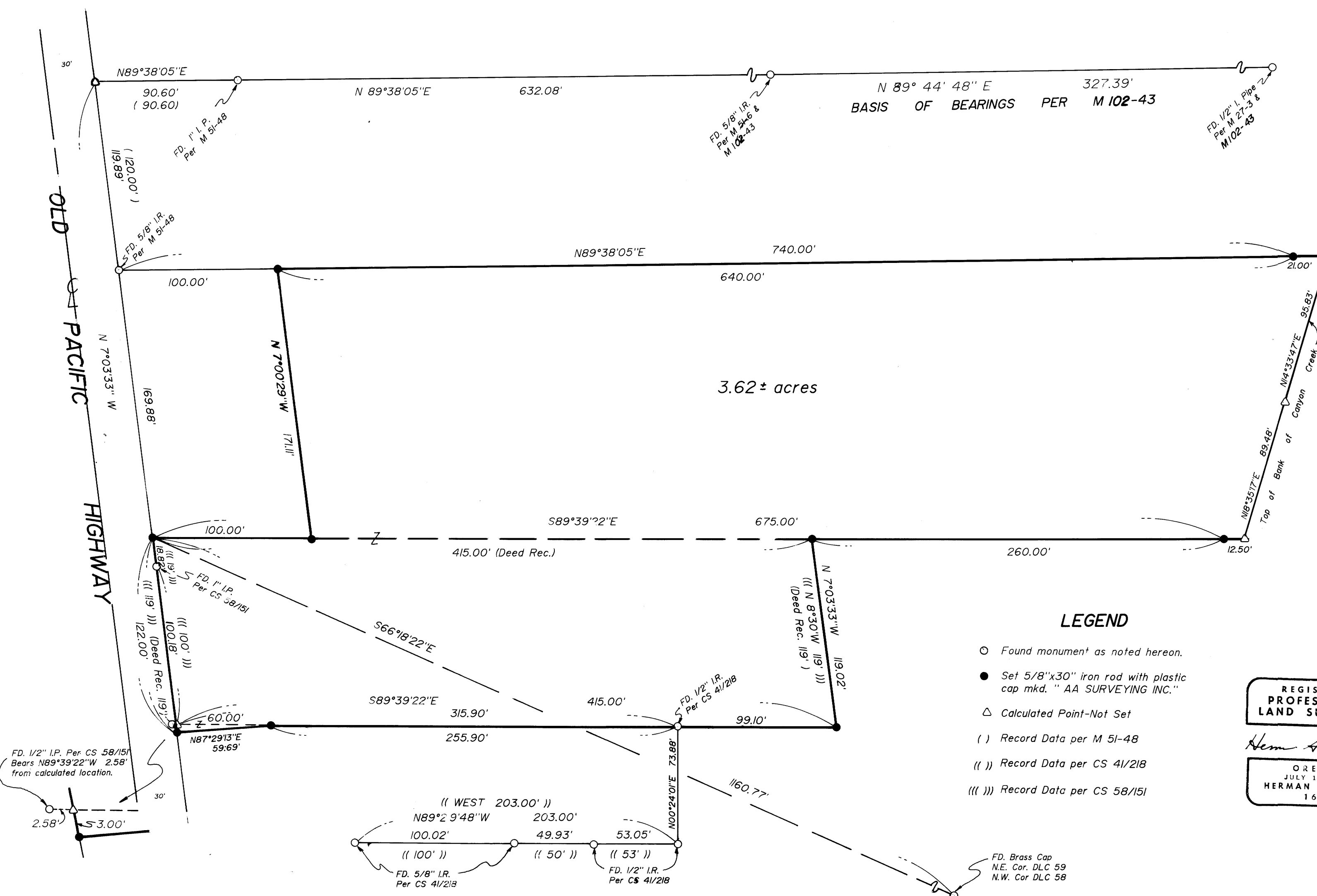
COUNTY SURVEYOR  
DOUGLAS COUNTY, ORE. TF

## NARRATIVE

**PURPOSE:** To monument the boundaries of that property described in Book 968, Page 629 Deed Records of Douglas County, Oregon.

**PROCEDURE:** Record Surveys in the area include CS 41/218 by J.R. Daugherty in 1948, M 27-3 by Geo. J. Wenderoth in 1952, CS 58/151 by John H. Markham in 1955, M 51-6 & M 51-48 by Baughman Surveying Service in 1973, and M 102-43 by AA Surveying Service Inc. in 1986. I found monuments from some of these surveys as shown on the annexed plat. These monuments were used as control to establish the line of this survey. The 1/2" iron pipe at the SW corner was found to be out of position. This point was reset by intersecting the R/W line and the Southerly property line by using the found monuments. The North line of the property was determined from the found monuments from M 51-48.

This survey was performed by L. Fanning and R. Huling using a Topcon GTS 2 10" Theodolite/EDM. A closed traverse was made to tie found monuments. All corners were set from angle points within this traverse.



## LEGEND

- Found monument as noted hereon.
- Set 5/8"x30" iron rod with plastic cap mkd. "AA SURVEYING INC."
- △ Calculated Point-Not Set
- ( ) Record Data per M 51-48
- (( )) Record Data per CS 41/218
- (( ( )) Record Data per CS 58/151

REGISTERED  
PROFESSIONAL  
LAND SURVEYOR

Herman A. Pieske

OREGON  
JULY 14, 1978  
HERMAN A. PIESKE  
1651

MAP FILE M103-25

M103-25