

COUNTY SURVEYORS FILE DATA
TO NOT REMOVE FROM OFFICE

A SURVEY FOR LES MITCHELL

IN THE S.W. 1/4 OF S.E. 1/4 OF SECTION 12, T32S R5W, W.M.
DOUGLAS COUNTY, OREGON

FILED

2/5

FEB 3 1987 TF

COUNTY SURVEYOR
DOUGLAS COUNTY, ORE. TF



SCALE: 1"=100'
JAN. 20, 1987

NOTE:

RIW DETERMINED USING
DOUGLAS COUNTY STRAIGHT
LINE CHARTS PER DISCUSSION
WITH MIKE LATTRELL, &
DETERMINED BY SPLITTING
EXISTING PAVEMENT.

NARRATIVE:

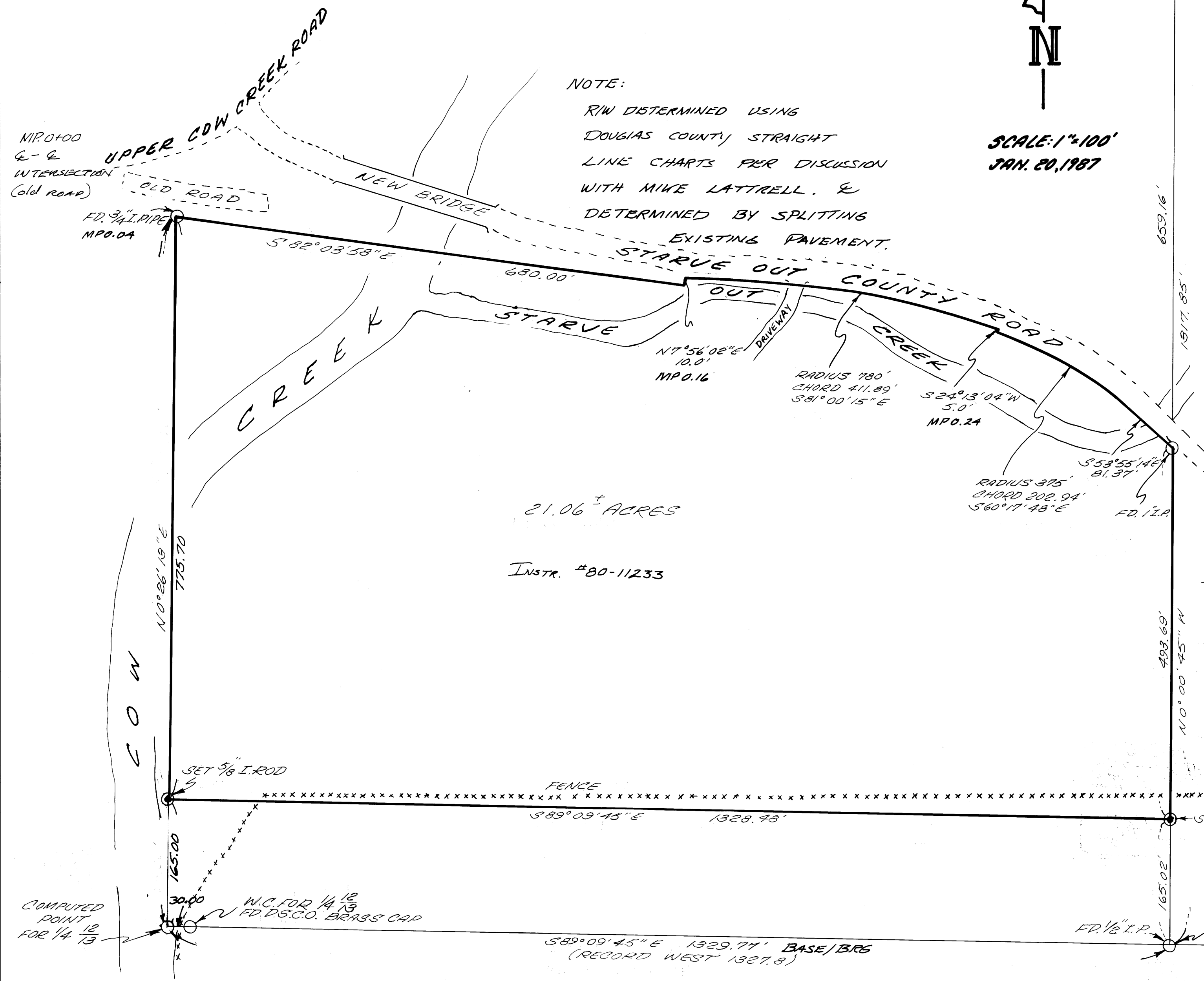
FOUND THE NORTHEAST AND NORTHWEST PROPERTY CORNERS AS SET BY WENDEROTH IN 1957 AND 1972. SET THE SOUTHEAST AND SOUTHWEST PROPERTY CORNERS 10 RODS NORTH OF THE EXISTING SECTION LINE (WENDEROTH, 1957) ON LINE WITH THE APPROPRIATE CORNERS. BASIS OF BEARING IS THE SOUTH LINE OF SECTION 12, B.L.M. RETRACEMENT, 1979.

SURVEYED BY:

DONALD A. BENTZ
P.O. BOX 901
WINCHESTER, OREGON 97475

LEGEND:

- 5/8" x 30" IRON ROD SET MKD "BENTZ SURVEY INC"
- CORNER FOUND
- PROPERTY LINE
- - - EDGE OF PAVEMENT
- xxxxx FENCE



MPO.00
6-6
INTERSECTION
(old road)
FD. 3/4" I. PIPE
MPO.04

COMPUTED POINT FOR 1/4 13
W.C. FOR 1/4 13
FD. D.S.C.O. BRASS CAP

389°09'45"E 1329.71' BASE/BRG
(RECORD WEST 1327.8)

389°09'15"E 1324.81'
(RECORD WEST 1327.8)

127
1378
FD. B.L.M. BRASS CAP

M103-24

M103-24