

SURVEY FOR

COLE & HONGELL LOGGING CO. AND INTERNATIONAL PAPER CO.

COLE & HONGELL LOGGING CO. DATA
REMOVED FROM OFFICE

FILED
NOV 18 1986

COUNTY SURVEYOR
DOUGLAS COUNTY, ORE

LOCATED IN
SW 1/4 & SE 1/4 SECTION 32, AND SW 1/4 & SE 1/4 SECTION 33
T.21S., R.12W., WILL. MER., DOUGLAS COUNTY
OREGON

OCTOBER, 1986

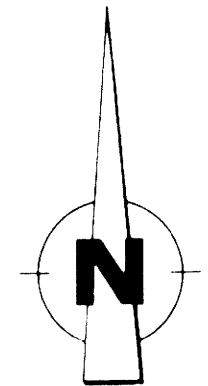
SCALE: 1" = 400'

CORNERS

- 1) ALL MEASUREMENTS TO BEARING TREES WERE TO CENTER OF TREE EXCEPT AS NOTED. 6" SPIKE CHAINING POINTS WERE SET NEAR THE BASE OF NEW AND OLD BEARING TREES FOR THIS PURPOSE.
2) COMPASS DECLINATION USED WAS 19° EAST SINCE GLO TOWNSHIP LINE SURVEY USED 19° 10' AND 19° 10' IN THIS AREA.
3) ALL NEWLY MARKED AND ALL FOUND PREVIOUS SCRIBED FACES WERE PAINTED RED. NEW BEARING TREES WERE ALSO TAGGED FRONT AND BACK WITH I.P. ALUMINUM TAGS, AND A RED BAND PAINTED ABOVE AND BELOW THE TAGS.
4) ALL SET CORNERS WERE 3/4" DIAMETER ALUMINUM RODS WITH 3" ALUMINUM CAPS DRIVEN ON. CAPS WERE STAMPED "IP TIMBERLANDS OPERATING CO. - UNLAWFUL TO DISTURB-RLS2168-1986." A MAGNET WAS BURIED NEXT TO EACH ROD, AND A 6" ALUMINUM FENCE POST WITH IP "SURVEY MONUMENT" SIGN ATTACHED WAS DRIVEN NEAR EACH FOUND AND SET CORNER.
5) IRON PIPES ARE DENOTED "IP" AND INSIDE NOMINAL SIZE IS SHOWN.

- A) PREVIOUS AGREEMENT CORNER PER R. THOMPSON SURVEY DATED 11/20/1973
B) E-W 1/64 SECTIONS 32,5 PER R. THOMPSON (11/20/1973)
C) 1/4 CORNER SECTIONS 32,5 PER GLO 1857 AND EPPSTEIN 1925
D) SECTION CORNER SECTIONS 32,33,5,4 PER GLO
E) M 1/16 CORNER SECTIONS 33,4 SET BY SINGLE PROPORTION: 42" ALUMINUM ROD 6" HIGH WITH CAP MKD "M1/16T21S12W33T22S54" FROM WHICH BEAR:
F) 1/4 CORNER SECTIONS 33,4 PER GLO

- 6) SECTION CORNER SECTIONS 33,34,4,3 FOUND AND ACCEPTED DOUGLAS COUNTY MONUMENT PER 1967 RESTORATION
H) NEW AGREEMENT CORNER SET 41" ALUMINUM ROD 6" HIGH WITH CAP MKD "AC" FROM WHICH BEAR:
J) PREVIOUS AGREEMENT CORNER PER BAUGHMAN 1973



1" = 400'
BEARINGS BASED ON SOLAR OBSERVATION AT CORNER TO SECTIONS 33,34,4,3
COMPASS DECLINATION USED = 19° EAST

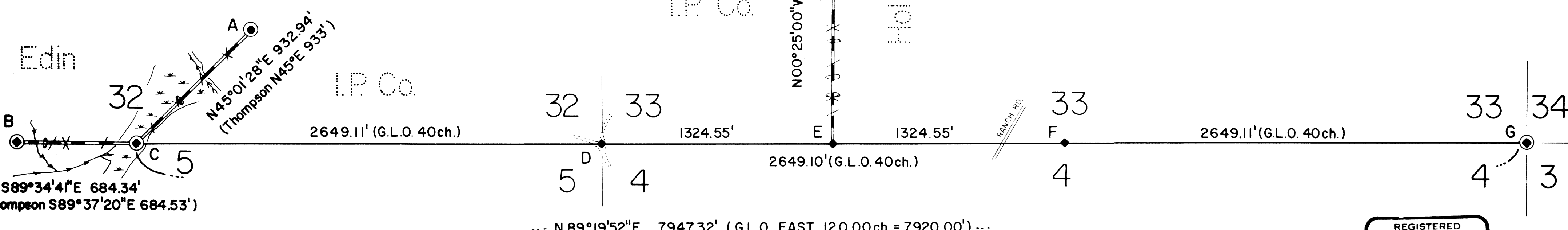
LEGEND

- PROPERTY LINE MARKED WITH PAINTED RED BLAZES, RED PLASTIC FLAGGING, ALUMINUM POSTS, MAGNETS, AND REFERENCE TAGS TO MAGNETS AND POSTS
LINE TREE MARKED WITH 2 HACKS EACH SIDE AND IP PROPERTY LINE ALUMINUM TAG
BURIED MAGNET WITH 1"x21" FLUORESCENT ORANGE PLASTIC COVER IN GROUND, AND SET 5" HIGH RED PAINTED STAUB BESIDE IT
SET MAGNET AND SET 6" LONG ALUMINUM POST BESIDE IT WITH IP PROPERTY LINE SIGN ATTACHED
SET CORNER AS NOTED
FOUND CORNER AS NOTED
UNPAVED ROAD
RECORD DATA
DOUGLAS FIR
SITKA SPRUCE
WESTERN HEMLOCK
BIGLEAF MAPLE
RED ALDER
DRAW OR CREEK
MARSH

NARRATIVE
PURPOSE OF SURVEY: 1) TO ESTABLISH AND MARK AN AGREEMENT BOUNDARY LINE BETWEEN INTERNATIONAL PAPER COMPANY AND RAY HOLLIDAY IN SW 1/4 SECTION 33 FOR LOGGING BY COLE & HONGELL
2) TO MARK A PREVIOUS AGREEMENT BOUNDARY LINE BETWEEN INTERNATIONAL PAPER COMPANY AND EDIN PROPERTIES IN SW 1/4 AND SE 1/4 SECTION 32
EQUIPMENT USED: WILD T1000 ELECTRONIC 1" THEODOLITE
SURVEY METHODS: CLOSED LOOP TRAVERSE EXCEEDING LINEAR CLOSURE OF 1:5000 USING T1000 AND D11000. CORNERS SET USING T1000 AND D11000 OR STEEL TAPE. CORNERS WITNESSED USING COMPASS AND TAPE. LINE POSTED USING OFFSETS TO TRUE LINE FROM RANDOM TRAVERSE POINTS AND HAND COMPASS. COORDINATE COMPUTATIONS WITH NORTHSTAR. SOLAR OBSERVATION COMPUTATIONS WITH HP41CX.
BOUNDARY PROCEDURE: TOWNSHIP LINE CORNERS NOT FOUND WERE SET AT RECORD POSITION BY THE METHOD OF SINGLE PROPORTION, AS WAS CORNER E. CONTROLLING CORNERS WERE C AND G. CORNERS A,B,C, AND J WERE PREVIOUS AGREEMENT CORNERS FOUND. CORNER H WAS SET TO DEFINE AN AGREEMENT BOUNDARY BETWEEN INTERNATIONAL PAPER COMPANY AND RAY HOLLIDAY.
PREVIOUS SURVEY RECORDS: RECORDS REFERRED TO INCLUDED ORIGINAL GOVERNMENT LAND OFFICE (NOW BLM) SURVEY RECORDS; RECORDED RESTORATIONS OF GLO CORNERS; SURVEY BY ROBERT THOMPSON & ASSOC. FOR EDIN PROPERTIES CORP. DATED 11/20/1973; AND SURVEY BY BAUGHMAN SURVEYING SERVICE FOR LILLEBO & HOLLIDAY DATED 4/1973.

LINE POSTING MARKERS & REFERENCES & LINE TREES

Table with columns: LINE BETWEEN CORNERS, DISTANCE ALONG LINE, FROM CORNER, LINE POINTS (M = MAGNET & STAUB), LINE POINT REFERENCE TAG ON AT. Rows include data for corners B, C, A, E, H, J.



REGISTERED PROFESSIONAL LAND SURVEYOR
A J H
OREGON
ANDREW T. BLEACHLY
2169

SURVEYED BY:
Stutzner Engineering & Forestry
TELEPHONE 267-2872
705 SO. 4TH, P.O. BOX 118 - COOS BAY, OREGON 97420

MAP FILE M125-71

MAP FILE M125-71