

DL-201W

FILED

NOV 18 1986

COUNTY SURVEYOR
DOUGLAS COUNTY, ORE

SURVEY FOR
INTERNATIONAL PAPER CO.

IN
SE 1/4 S.17, T.22 S., R.9 W., W.M.
DOUGLAS COUNTY, OREGON

OCTOBER, 1986

SCALE: 1"=100'

LEGEND

- = SET 5/8" x 3/4" REBAR MONUMENT 2" TO 6" ABOVE GROUND, WITH 1-1/4" PLASTIC CAP MARKED "STUNTZNER ENGINEERING"
- ⊙ = SAME AS ● WITH MAGNET BURIED BY REBAR
- (1188.31') = RECORD DATA
- = FOUND MONUMENT
- = APPROXIMATE ROCK ROADWAY LOCATION
- D.F. = DOUGLAS FIR
- R.A. = RED ALDER

REGISTERED
PROFESSIONAL
LAND SURVEYOR

258

ANDREW



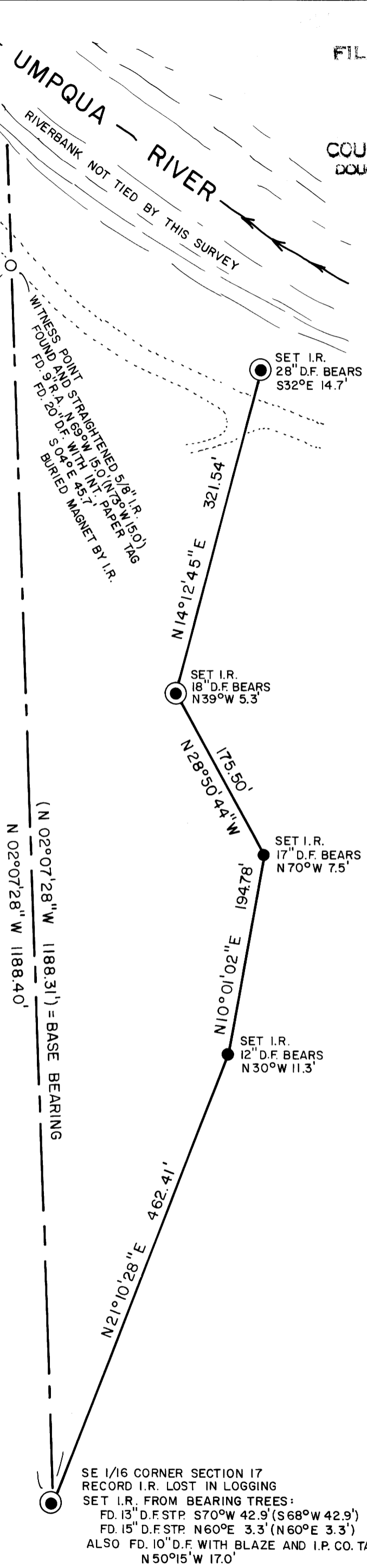
NARRATIVE

PURPOSE OF THIS SURVEY WAS TO MONUMENT AND SURVEY A LINE AS DIRECTED BY I.P. CO.

BEARINGS ARE TRUE, BASED ON STUNTZNER ENGR. PLAT OF SUBDIVISION OF SECTION 17 FOR I.P. CO. DATED 3/25/78. RECORD MONUMENTS AND DIMENSIONS ARE ALSO PER SAME PLAT.

TRAVERSE WAS WITH WILD T1000 THEODOLITE AND WILD DI-1000 ED.M. BEARING TREES WERE TIED WITH STAFF OR HAND COMPASS AND RAG TAPE. USED 20°E. DECLINATION.

NEW BEARING TREES WERE MARKED WITH RED PAINT AND STUNTZNER ALUMINUM TAG.



SE 1/16 CORNER SECTION 17
RECORD I.R. LOST IN LOGGING
SET I.R. FROM BEARING TREES:
FD. 13" D.F. STP. S70°W 42.9' (S68°W 42.9')
FD. 15" D.F. STP. N60°E 3.3' (N60°E 3.3')
ALSO FD. 10" D.F. WITH BLAZE AND I.P. CO. TAG
N 50°15' W 17.0'

COUNTY SURVEYORS FILE DATE
DO NOT REMOVE FROM OFFICE

SURVEY BY: STUNTZNER ENGINEERING & FORESTRY
P.O. BOX 118, COOS BAY, OREGON PH: 267-2872

M102-70