

① 1/4 CORNER S21/S28

Found a 1971 C.S. BCIP, and the following accessories :
25" cedar snag top bears S31°W, 24.0'
Scribing visible (1958)
56" fir bears N30°W, 28.4'
Bark scribing visible (original)
Also found a scribed stake at corner.

② 1/4 CORNER S29/S28

Found a 1967 C.S. BCIP, and the following accessories:
20" cedar stump bears N05°W, 8.6'
No scribing - rotten (original)
18" fir bears N28°E, 8.2'
Closed face (1953)
12" fir bears S46°W, 45.8'
Closed face (1967)
Original corner post not found.

③ C 1/4 CORNER S28

Set an ACIP, and the following accessories :
7" fir bears S31°E, 13.4'
10" fir bears S36°W, 8.4'
Both BT's scribed : C1/4 S28 BT

④ 1/4 CORNER S28/S27

Found a 1967 C.S. BCIP, and the following accessories :
20" fir, now down, bears N57-1/2°E, 18.5'
Bark scribing visible (1949)
18" fir bears S18°W, 20.9'
Closed face (1949)
28" fir, now down, bears N70°E, 21.2'
Closed face (1967)
13" fir bears N85-1/2°W, 12.8'
Closed face (1967)
Set : 14" fir bears S19°E, 7.2'
Scribed : 1/4 S27 BT

⑩ SECTION CORNER S27/S28/S33/S34

Found a 1967 C.S. BCIP, and an unrecorded 3/4" iron pipe alongside it. Also found the following accessories :
37" fir bears N65°E, 54.6' (rec. = 53.5')
Closed face (1949)
30" fir bears S22-3/4°W, 60.5' (rec. = 59.7')
Closed face (1949)
21" fir bears S49°E, 9.0'
Scribing partially visible (1967)
30" fir bears N67-1/2°W, 25.2' (rec. = 25.9')
Scribing partially visible (1967)
The 1949 N.W. and S.E. BT's are down.

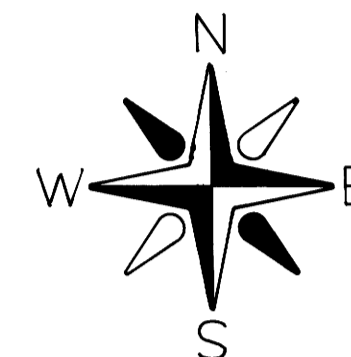
FILED

OCT 29 1986

COUNTY SURVEYOR
DOUGLAS COUNTY, ORE.

LEGEND

- Corner set this survey
- Corner found and used for control
- Property line posted
- 1855 G.L.O. record course



SCALE : 1" = 500'

NOTES

- 1) ACIP refers to a 2-1/2" aluminum cap set on a 1" x 36" iron pipe.
- 2) C.S. BCIP refers to a 2-1/2" brass cap set on a 1-1/2" iron pipe by the Douglas County Surveyor's Office.
- 3) All monuments set are stamped according to the descriptions given in the 1973 B.L.M. Manual of Surveying Instructions, Chapter IV. In addition, each monument set, is stamped PLS 1988.
- 4) All bearings to corner accessories were taken with a hand compass. Mean magnetic variation = 19°45' E.
- 5) Distances to bearing trees are measured to the side and center of the tree, one foot above the root crown.
- 6) This survey was run with a Topcon GTS-2.

SURVEY NARRATIVE

This survey was conducted to establish the property line for Champion International Corporation in Section 28, T29S, R8W, W.M.. Basis of bearing was obtained from a sunshot taken in one leg of the control traverse.
Section 28 was originally surveyed by Dennis Hathorn, in 1855. The Douglas County Surveyor's Office has renewed all controlling corners used based on original evidence at each site, with the exception of corners on the south section line. The S.E. section corner and the S1/4 corner of Section 28 were proportioned by Art Boyer in 1949 and renewed by the Douglas County Surveyor's Office in 1967. The S.W. corner of Section 28 was restored by Eppstein in 1931 based on original accessories found. It was renewed by Howard Johnstone in 1961.
The section was subdivided according to the 1973 B.L.M. Manual of Surveying Instructions. All traverses run were closed loops with a minimum error of closure of one part in 5,000. The survey was run in September and October, 1986. A portion of the property lines were blazed and posted with 5' steel fence posts with attached "Champion" tags. All property lines were flagged.

Ronald G. Geisler, Oregon P.L.S. 1988
Champion International Corporation
P.O. Box 1328
Roseburg, Oregon 97470

SURVEY OF SEC. 28, T29S, R8W, W.M. DOUGLAS COUNTY, OREGON

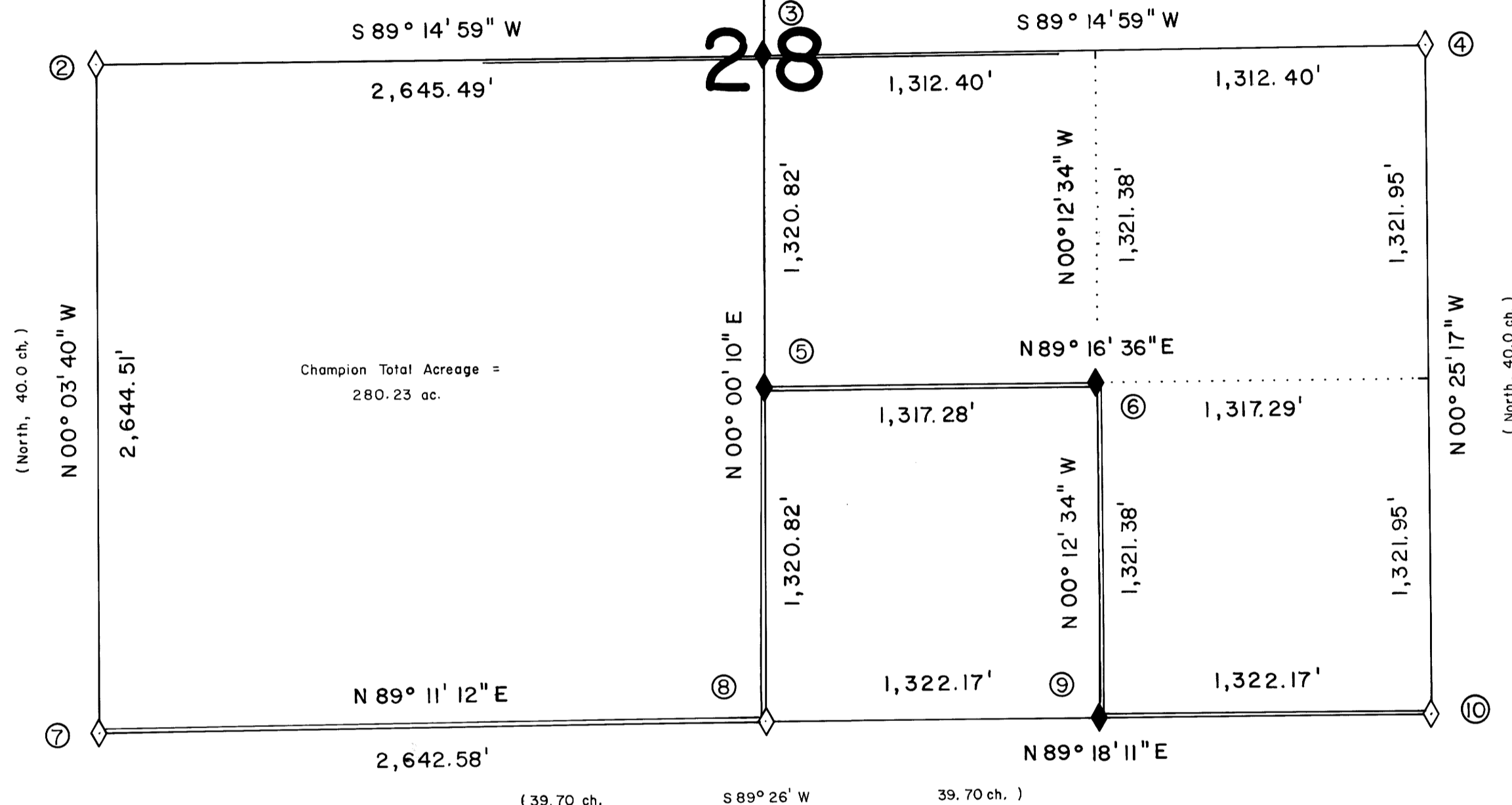
BY

CHAMPION INTERNATIONAL CORPORATION

OCTOBER 24, 1986

R.G.G.

DO NOT REMOVE FROM FILE



⑤ CS 1/16 CORNER S28

Set an ACIP, and the following accessories :
7" cedar bears N42°E, 4.5'
24" hemlock bears S58°E, 10.4'
Both BT's scribed : CS1/16 S28 BT

⑥ SE 1/16 CORNER S28

Set an ACIP, and the following accessories :
5" fir bears S55°W, 6.2'
12" fir bears N10°E, 7.5'
Both BT's scribed : SE 1/16 S28 BT

⑧ 1/4 CORNER S28/S33

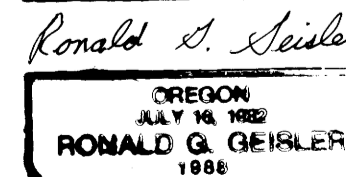
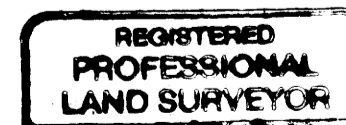
Found a 1967 C.S. BCIP and a scribed corner post alongside it. Also found the following accessories :
22" fir bears N37°W, 9.0' (1949)
21" fir bears S10°E, 18.6' (1949)
Both BT's have closed faces

⑦ SECTION CORNER S28/S29/S32/S33

Found a 1" iron pipe set by Howard Johnstone, in 1961, and fragments of a cedar corner post. Also found the following :
6" cedar rotten snag, 5' tall, bears S25-1/4°E, 138.5'
Scribe marks visible (1961)
6" fir, down and rotted, bears N70-1/2°W, 118.2'
Scribing partially visible (1961)
12" fir bears S80°W, 51.8' (rec. = 52.0')
Closed face (1961)
14" cedar bears N46°E, 126.6'
Scribing visible (1961)
Set : 12" fir bears S47°E, 28.5'
Scribed : T29S R8W S33 BT
6" fir bears N67°W, 23.5'
Scribed : T29S R8W S29 BT

⑨ E1/16 CORNER S28/S33

Set an ACIP, and the following accessories :
25" fir bears S13°W, 45.4'
Scribed : E1/16 S33 BT
15" cedar bears N78°E, 7.9'
Scribed : E1/16 S28 BT



M102-63

MAP FILE M102-63