

COUNTY SURVEYORS FILE DATA  
DO NOT REMOVE FROM OFFICE

# SURVEY TO SET LOT CORNERS

of LOT C, BLK. 11, JOHNSON'S SUBDIVISION  
in the N.E. 1/4 of S36, T26S, R6W, W.M.

FOR - BRENDA BROWN

BY - AA SURVEYING SERVICE, INC.  
2566 N.E. STEPHENS  
ROSEBURG, OREGON

FILED

JUN 23 1986 TF

COUNTY SURVEYOR  
BULLAS COUNTY, ORE. TF

MAY, 1986

SCALE - 1" = 20'

— LEGEND —

- — Found 1/2" Iron Pipe
- — Found 3/4" Iron Pipe
- ⊙ — Set 5/8" x 30" Iron Rod w/Brass Washer Stamped "L.S. 1651"
- (0.0) — Record as per Plat, Vol. 6, Pg. 48

REGISTERED  
PROFESSIONAL  
LAND SURVEYOR

*Herman A. Pieske*

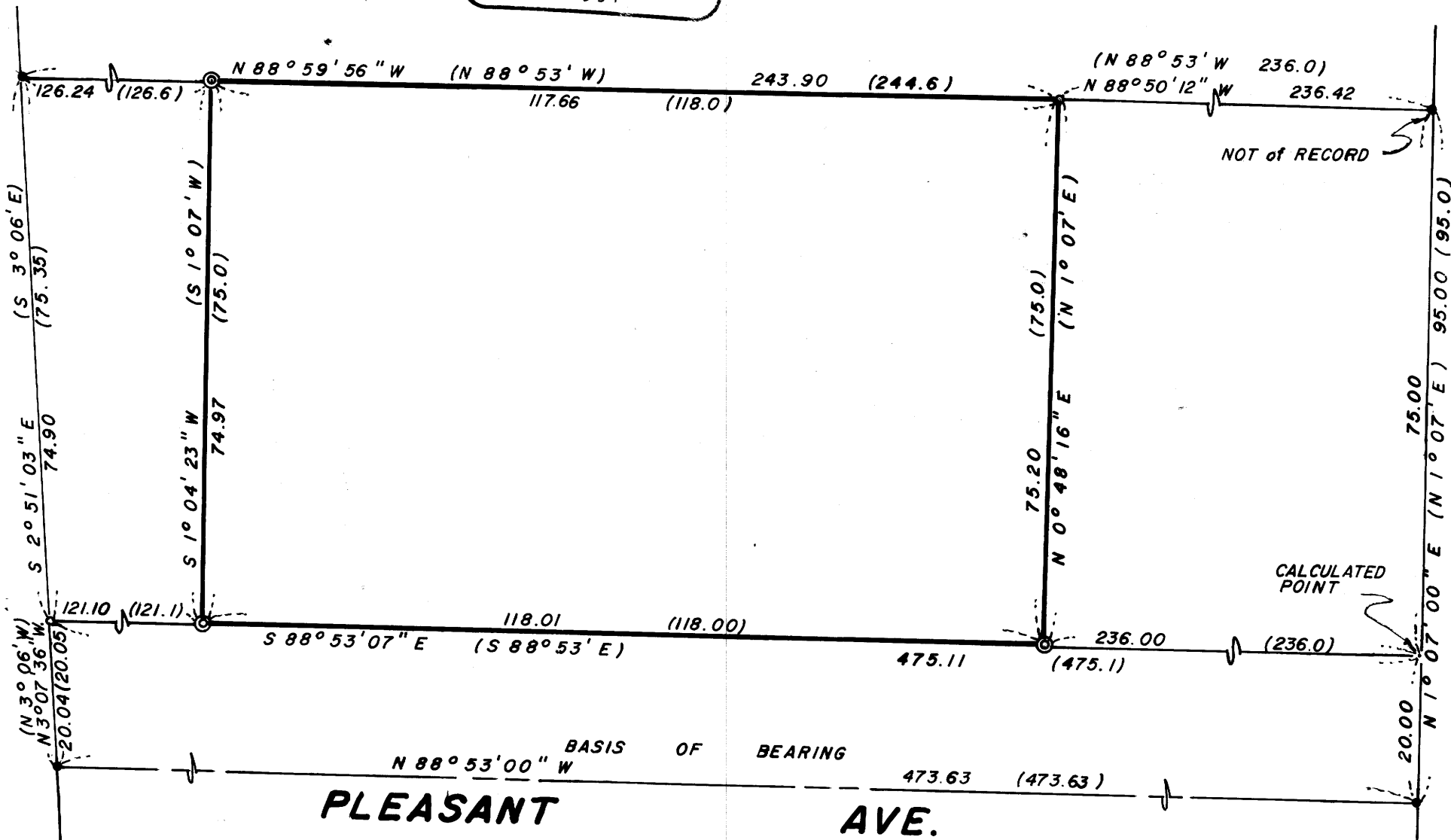
OREGON  
JULY 14, 1978  
HERMAN A. PIESKE  
1651

— NARATIVE —

Purpose - To replace lost corners.  
Procedure - Found monuments were traversed using a Topcon GTS-2 (10" theodolite) and are shown on the annexed map.



S. P. R. R. R/W



N.E. STEPHENS ST.

MAP FILE M/102-6

MAP FILE M/102-6