

NW 1/4 NW 1/4 SECT. 34

T.21S, R.5 W. W.M.

FILED 1

For Keith Roberts
506 CROWE AVE
Drain. Oreg. 97435
836-2654

By Wilford N. Haines
466 State Highway 38
Drain Oregon 97435
836-2303

OCT 6 1986

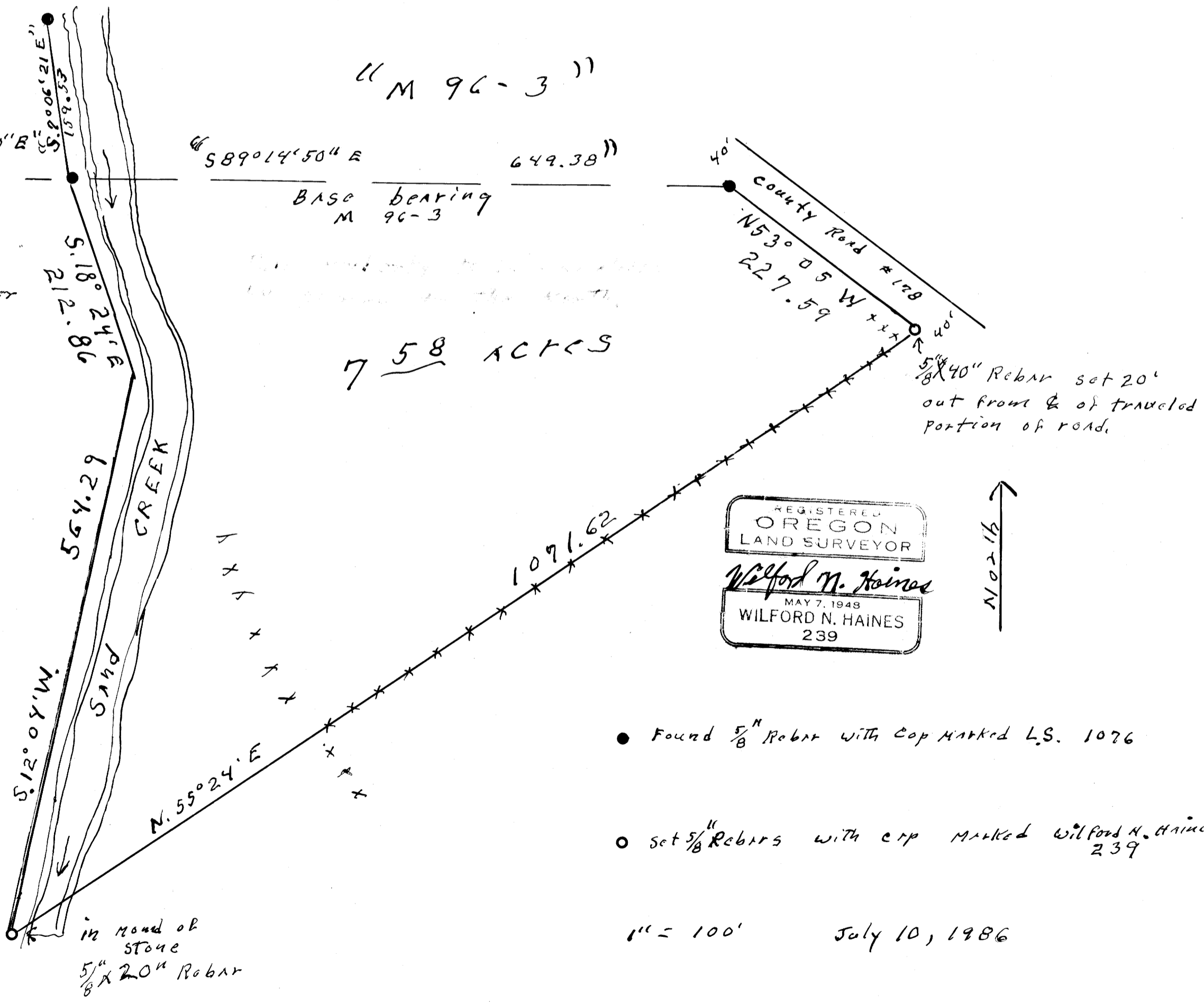
COUNTY SURVEYOR
DOUGLAS COUNTY, ORE.

NARRATIVE: This survey started at south line of M 96-3 thence down county road to a fence line, thence along fence line SW thence prolonged line to west bank of Sand Creek, thence traversed up Sand Creek to the south line of M 96-3

"M 96-3"

28	27	"S89°14'50"E"	521.99
33	34	"M 96-3"	

See M 96-3 for description of corner monument.



7.58 ACRES

REGISTERED
OREGON
LAND SURVEYOR
Wilford N. Haines
MAY 7, 1948
WILFORD N. HAINES
239

- Found 5/8" Rebar with cap marked L.S. 1076
- set 5/8" Rebars with cap marked Wilford N. Haines 239

1" = 100' July 10, 1986