

- NARRATIVE -

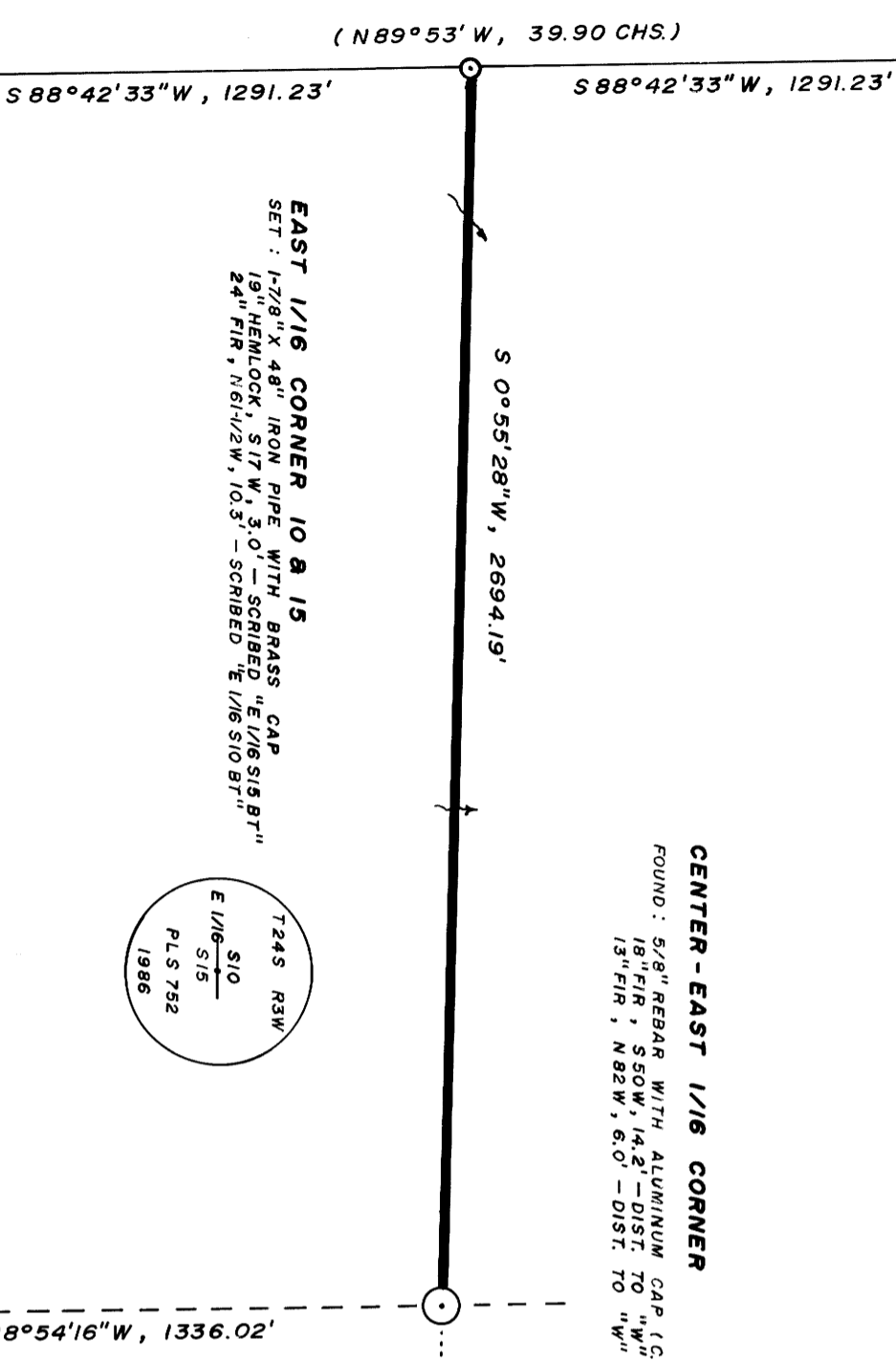
THIS SURVEY WAS MADE IN JULY, 1986 BY DONALD L. PEEL OF PEEL BAKER COUNTY SURVEYOR LAND SURVEYING INC., 1262 LAWRENCE STREET - SUITE 4, EUGENE, OREGON. THE PURPOSE OF THIS SURVEY WAS TO LOCATE AND MARK SOME OF THE PROPERTY LINES OF THE LAND OWNED BY WEYERHAEUSER CO. IN THE EAST 1/2 OF SECTION 15, T24S, R3W, W.M. A KERN K1M THEODOLITE, DM502 AND 300' STEEL TAPE WERE USED TO PERFORM THIS SURVEY. CONTROL FOR THIS SURVEY WAS ESTABLISHED BY THIS FIRM IN A 1983 SURVEY (C.S. FILE NO. M90-48) AND A 1985 SURVEY (C.S. FILE NO. M99-77). RANDOM TRANSIT TRAVERSES, WITH A MINIMUM ERROR OF CLOSURE OF 1/75,000', WERE RUN AS CLOSE AS POSSIBLE TO THE TRUE PROPERTY LINE. BEARINGS WERE BASED ON A SOLAR OBSERVATION (AS ESTABLISHED IN C.S. NO. M90-48). OFFSETS FROM THE RANDOM TRAVERSE LINE TO THE TRUE PROPERTY LINE WERE CALCULATED AND USED TO DETERMINE THE POSITION OF THE TRUE LINE. THE TRUE PROPERTY LINE WAS MARKED IN THE FIELD BY BLAZING THE TREES (BLAZES NOTCHED AND PAINTED RED) ON BOTH SIDES OF THE TRUE LINE. THE EAST 1/16 CORNER BETWEEN SECTIONS 10 & 15 WAS SET AT MIDPOINT BETWEEN THE NORTH 1/4 CORNER AND THE NORTHEAST SECTION CORNER. THE CENTER-SOUTH 1/16 CORNER WAS SET AT MIDPOINT BETWEEN THE CENTER 1/4 CORNER AND THE SOUTH 1/4 CORNER. BOTH CORNERS SET IN THIS SURVEY WERE MONUMENTED WITH IRON PIPES AND BRASS CAPS (SIZE OF PIPE AND MARKINGS AS NOTED ON PLAT) AND WERE REFERENCED BY SCRIBING BEARING TREES. THE DISTANCE TO SAID BEARING TREES WAS MEASURED TO A "W" NAIL IN THE LOWER BLAZE AND THE BEARINGS ARE MAGNETIC, VAR. 20°

BASIS OF BEARING: SOLAR OBSERVATION (AS PER C.S. NO. M90-48)

SCALE: 1" = 400'

SECTION CORNER 10, 11, 14, 15
 FOUND: 1-3/4" IRON PIPE WITH BRASS CAP (C.S. NO. M90-48)
 27" FIR, N 27° E, 11.3' - DIST. TO "W" NAIL
 19" HEMLOCK, S 23° E, 45.5' - DIST. TO "W" NAIL
 24" FIR, S 23° W, 43.4' - DIST. TO "W" NAIL
 58" FIR STUMP, N 20° W, 27.4' - DIST. TO "W" NAIL
 NOTE: 2" ALUMINUM PIPE SET BY WEYERHAEUSER CO. BEARS S 30° 27' 17" W, 19.50'

CENTER - EAST 1/16 CORNER
 FOUND: 5/8" REBAR WITH ALUMINUM CAP (C.S. NO. M99-77)
 18" FIR, S 50° W, 14.2' - DIST. TO "W" NAIL
 13" FIR, N 82° W, 6.0' - DIST. TO "W" NAIL

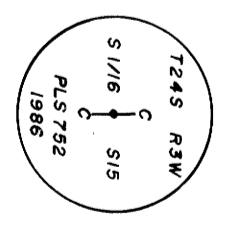


1/4 CORNER 10 & 15
 FOUND: 1-1/4" IRON PIPE WITH DOUGLAS CO. BRASS CAP "1987"
 36" FIR STUMP, S 28° W, 12.7' (CTR. MEASURE) ORIG. B.T.
 36" FIR STUMP, S 28° W, 12.7' (CTR. MEASURE) ORIG. B.T.
 28" MAPLE, N 85° E, 11.5' (CTR. MEASURE) SCRIBE VISIBLE
 15" FIR, N 32° 1/2° E, 9.4' (DIST. TO "W" NAIL) SCRIBE VISIBLE
 14" FIR, S 16° E, 5.6' (DIST. TO "W" NAIL) SCRIBE VISIBLE

CENTER 1/4 SECTION 15
 FOUND: 2" IRON PIPE WITH BRASS CAP (C.S. NO. M99-77)
 32" CEDAR, S 52° E, 27.9' (DIST. TO "W" NAIL) SCRIBE VISIBLE
 26" FIR, N 74° W, 26.0' (DIST. TO "W" NAIL) SCRIBE VISIBLE

CENTER - SOUTH 1/16 CORNER
 SET: 1-5/8" X 36" IRON PIPE WITH BRASS CAP
 15" FIR, N 36° 1/2° E, 19.9' - SCRIBED "CS 1/16 S15 BT"
 21" FIR, S 66° E, 10.8' - SCRIBED "CS 1/16 S15 BT"

1/4 CORNER 15 & 22
 FOUND: 1-5/8" IRON PIPE WITH BRASS CAP (C.S. NO. M90-48)
 18" FIR, S 11° E, 21.3' (DIST. TO "W" NAIL) SCRIBE VISIBLE
 19" FIR, N 76° W, 7.3' (DIST. TO "W" NAIL) SCRIBE VISIBLE



REGISTERED PROFESSIONAL LAND SURVEYOR
 DONALD L. PEEL
 JULY 8, 1986

SURVEY IN
E 1/2 SEC. 15, T24S, R3W, W.M.
DOUGLAS COUNTY, OREGON
 FOR
WEYERHAEUSER CO.
 BY
PEEL BAKER LAND SURVEYING INC.
 JULY 21, 1986

FILE
 28
 AUG 22 1986
 DOUGLAS COUNTY, OREGON