

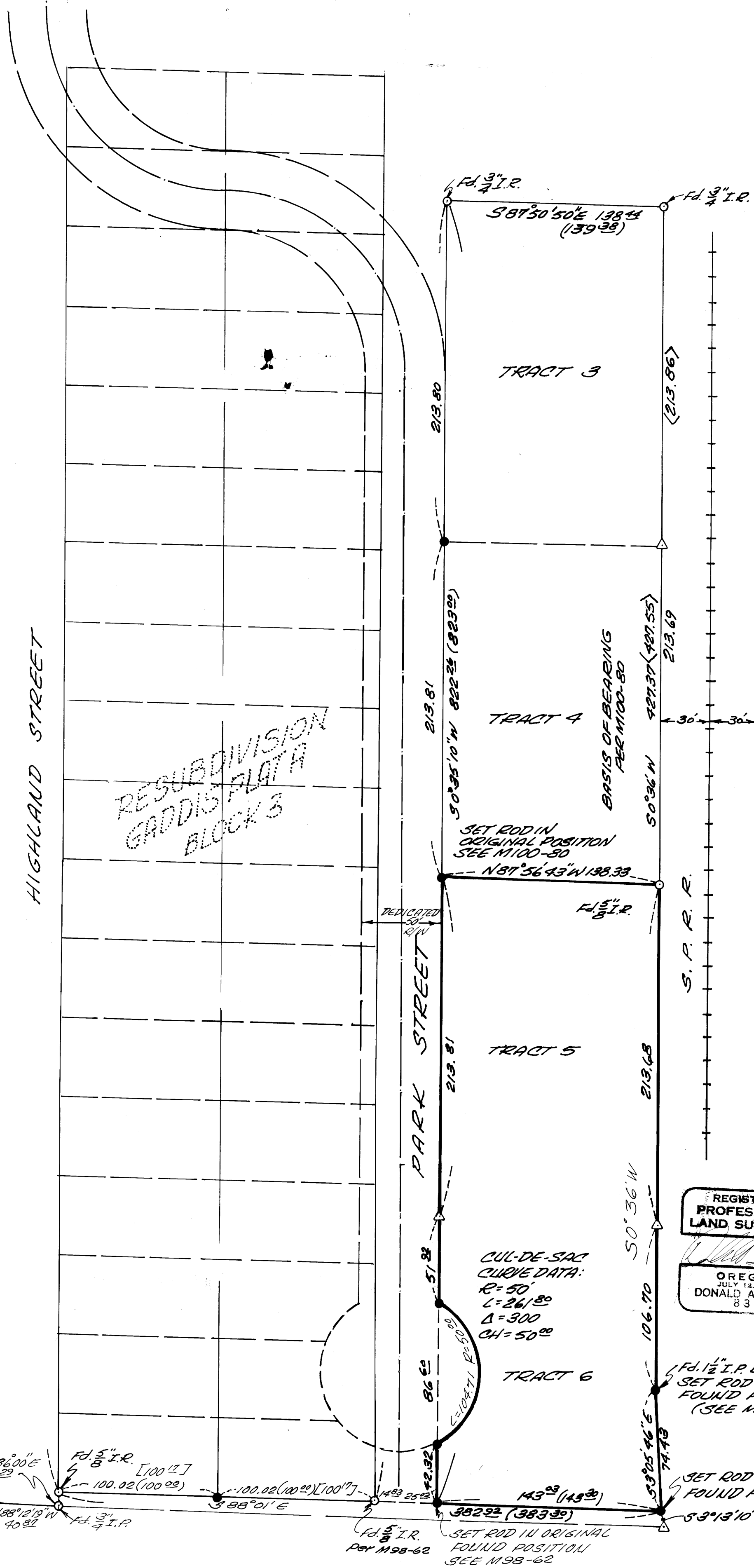
COUNTY SURVEYORS FILE DATA
DO NOT REMOVE FROM OFFICE

A SURVEY FOR GORDON AVERY IN THE NE 1/4 OF SECTION 13, TOWNSHIP 27 SOUTH, RANGE 6 WEST, W.M. AND IN THE JEREMIAH HUNTLEY D.L.C. #56.

VACATED SCOTT STREET

SURVEYED BY: DONALD A. BENTZ, INC.
P.O. BOX 901
WINCHESTER, OR. 97495

FILED
JUL 28 1986
COUNTY SURVEYOR
DOUGLAS COUNTY, ORE.
TF



NARRATIVE:

THE PURPOSE OF THIS SURVEY IS TO MONUMENT TRACTS 5 AND 6 GADDIS PLAT "A", RESUBDIVISION THE NORTHWEST CORNER OF TRACT 4 AND THE NORTHWEST CORNER OF TRACT 5 WERE SET AS PREVIOUSLY MONUMENTED BY US. (SEE MLP M100-80).

THE SOUTHEAST AND SOUTHWEST CORNERS OF TRACT SIX, AND THE ANGLE POINT IN THE EAST LINE OF TRACT 6 WERE MONUMENTED AT ORIGINAL FOUND POSITIONS (AS TIED ON M98-62)

THE REMAINING TWO MONUMENTS WERE PLACED WHERE THE CUL-DE-SAC RADIUS INTERSECT THE EAST R/W OF PARK.

FIELD CREW: D. DELATTE,
G. CANG
EQUIPMENT: LIETZ 20" THEODOLITE
STINGER EDM
DRAFTING: DON STILL

NOTE:

- () RECORD PER SUBDIVISION PLAT
- [] RECORD PER M 20-11
- { } RECORD PER M1-B
- < > RECORD PER M100-80

LEGEND:

- △ COMPUTED POINT
- FOUND AS NOTED
- SET 5" x 30" I.R. PLASTIC CAP MKD. "BENTZ SURVEY, INC."

REGISTERED PROFESSIONAL LAND SURVEYOR

OREGON
JULY 12, 1988
DONALD A. BENTZ
839

