

SURVEY TO SET PROPERTY CORNERS DO NOT REMOVE FROM OFFICE
 IN LOTS 20 & 21, BLOCK 3 OF RESUB. GADDIS PLAT "A"
 IN THE NE 1/4 SEC. 13, T. 27 S., R. 6 W., W.M., DOUGLAS COUNTY, OR
 FOR : KEVIN BUNNELL
 BY : AA SURVEYING SERVICE, INC.
 P.O. BOX 130 ROSEBURG, OREGON 97470

FILED *jl*
 JUL 23 1986 TF
 COUNTY SURVEYOR
 DOUGLAS COUNTY, ORE. TF

JUNE 1986

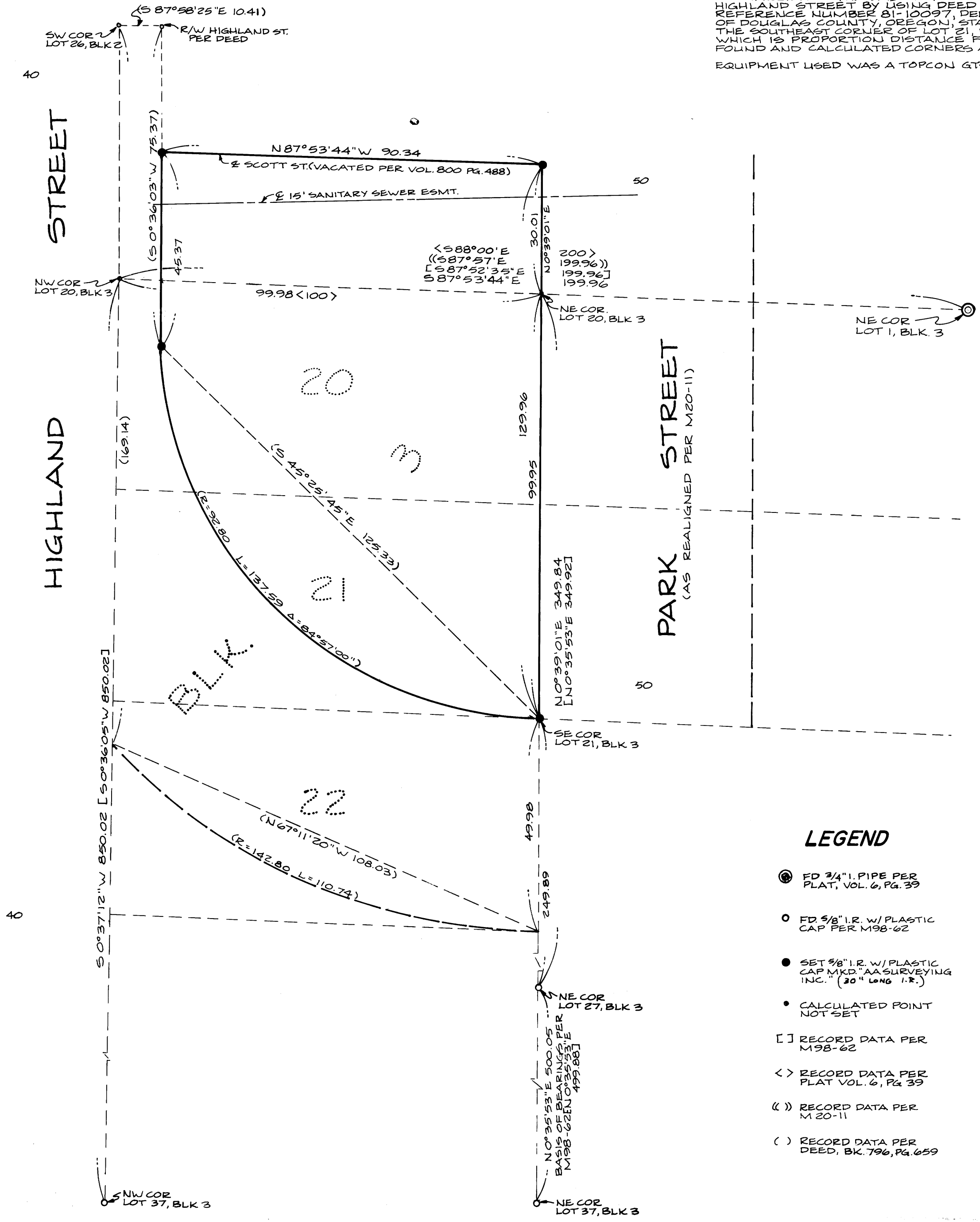
SCALE : 1" = 20'

NARRATIVE:

PURPOSE: TO MONUMENT THE CORNERS OF LOTS 20 & 21, BLOCK 3 AND THE SOUTH HALF OF VACATED SCOTT STREET.

PROCEDURE: I TIED IN ALL THE EXISTING MONUMENTS AS SHOWN ON THE ANNEXED MAP. I CALCULATED THE NORTHWEST CORNER OF LOT 20 BY A DISTANCE-DISTANCE INTERSECTION USING THE NORTHEAST CORNER OF LOT 1, BLOCK 3 AND THE NORTHWEST CORNER OF LOT 37, BLOCK 3. I HELD THE DISTANCES AS RECORDED ON M98-62 FOR THE NORTH AND WEST LINES OF BLOCK 3.

I ESTABLISHED THE EAST RIGHT-OF-WAY LINE OF HIGHLAND STREET BY USING DEED RECORD REFERENCE NUMBER 81-10097, DEED RECORDS OF DOUGLAS COUNTY, OREGON, STARTING AT THE SOUTHEAST CORNER OF LOT 21, BLOCK 3 WHICH IS PROPORTIONAL DISTANCE FROM THE FOUND AND CALCULATED CORNERS AS SHOWN. EQUIPMENT USED WAS A TOPCON GTS-2.



LEGEND

- FD 3/4" I.P. PIPE PER PLAT, VOL. 6, PG. 39
- FD 5/8" I.R. W/ PLASTIC CAP PER M98-62
- SET 5/8" I.R. W/ PLASTIC CAP MKD "AA SURVEYING INC." (30" LONG I.R.)
- ⊗ CALCULATED POINT NOT SET
- [] RECORD DATA PER M98-62
- < > RECORD DATA PER PLAT VOL. 6, PG. 39
- () RECORD DATA PER M20-11
- () RECORD DATA PER DEED, BK. 796, PG. 659

Kevin A. Peake