

**NORTH 1/4 CORNER SECTION 3 ONLY**

FD. 1952 G.L.O. BRASS CAP  
 36" FIR, S 08°W, 80.8' (SCAR VIS.), 1952 B.T.  
 42" FIR, S 62°E, 33.5' (SCAR VIS.), 1952 B.T.

**SOUTH 1/4 CORNER SECTION 34 ONLY**

FD. 1952 G.L.O. BRASS CAP WITNESS CORNER  
 AND 30" CORNER TREE  
 24" FIR STUMP, N 54°E, 25.2' (SCAR VIS.), 1952 B.T.  
 SET 8" FIR, N 17°W, 12.6' (SCRIBED/PAINTED RED)

**N.E. CORNER SECTION 3**

FD. 1952 G.L.O. BRASS CAP  
 15" FIR UPROOT, S 78°W, 54.0' (SCAR VIS.), 1952 B.T.  
 28" CEDAR STUMP, S 07°E, 25.0' (NO MARKS), 1952 B.T.  
 SET 7" FIR, S 35°W, 8.3' (SCRIBED/PAINTED RED)  
 18" CEDAR, N 54°W, 33.5' (SCRIBED/PAINTED RED)

**COUNTY SURVEYORS FILE DATA  
 DO NOT REMOVE FROM OFFICE**

FILED

JUL 23 1986 TF

COUNTY SURVEYOR  
 DOUGLAS COUNTY, ORE. TF

**"A" EAST 1/4 CORNER SECTION 3**

NO EVIDENCE FOUND OF ORIGINAL CORNER.  
 SET 1 1/4" x 36" IRON PIPE AND BRASS CAP.  
 (PURPLE M.M. BURIED UNDER 36" PIPE)  
 10" FIR, S 13°W, 19.7' (SCRIBED/PAINTED RED)  
 30" FIR, N 06°W, 22.2' (SCRIBED/PAINTED RED)

**"B" C.E. 1/16 CORNER SECTION 3**

SET "R.R." SPIKE IN SANDSTONE, BURIED 8", FOR 1/16 CORNER.  
 SET 1 1/4" x 36" IRON PIPE AND BRASS CAP FOR WITNESS CORNER.  
 W.C. BEARS N 89° 25' 58" E, 35.00' FROM BURIED "R.R." SPIKE.  
 (PURPLE M.M. BURIED UNDER 36" PIPE)  
 5" FIR, S 67°E, 13.6' (SCRIBED/PAINTED RED)  
 11" FIR, N 02°E, 19.9' (SCRIBED/PAINTED RED)

**"C" N.E. 1/16 CORNER SECTION 3**

SET 1 1/4" x 36" IRON PIPE AND BRASS CAP.  
 (PURPLE M.M. BURIED UNDER 36" PIPE)  
 8" FIR, N 10°E, 10.6' (SCRIBED/PAINTED RED)  
 8" FIR, N 62°E, 8.6' (SCRIBED/PAINTED RED)

**"D" NORTH 1/16 CORNER SECTION 3**

SET "R.R." SPIKE IN ROOT COLLAR OF 28" WHITE FIR  
 13" FIR, S 23°W, 10.1' (SCRIBED/PAINTED RED)  
 24" FIR, S 57°E, 25.2' (SCRIBED/PAINTED RED)

**WEST 1/4 CORNER SECTION 3**

FD. 48" FIR STUMP, N 68°E, 109.5' (SCAR VIS.), 1881 B.T.  
 68" FIR, N 62°W, 141.2' (SCAR VIS.), 1881 B.T.  
 SET 1 1/4" x 36" IRON PIPE AND BRASS CAP.  
 (PURPLE M.M. BURIED UNDER 36" PIPE)  
 9" FIR, S 76°W, 10.9' (SCRIBED/PAINTED RED)  
 12" FIR, S 47°E, 23.2' (SCRIBED/PAINTED RED)  
 (1" IRON PIPE BEARS S 6° 20' 15" W, 77.81')

**NARRATIVE**

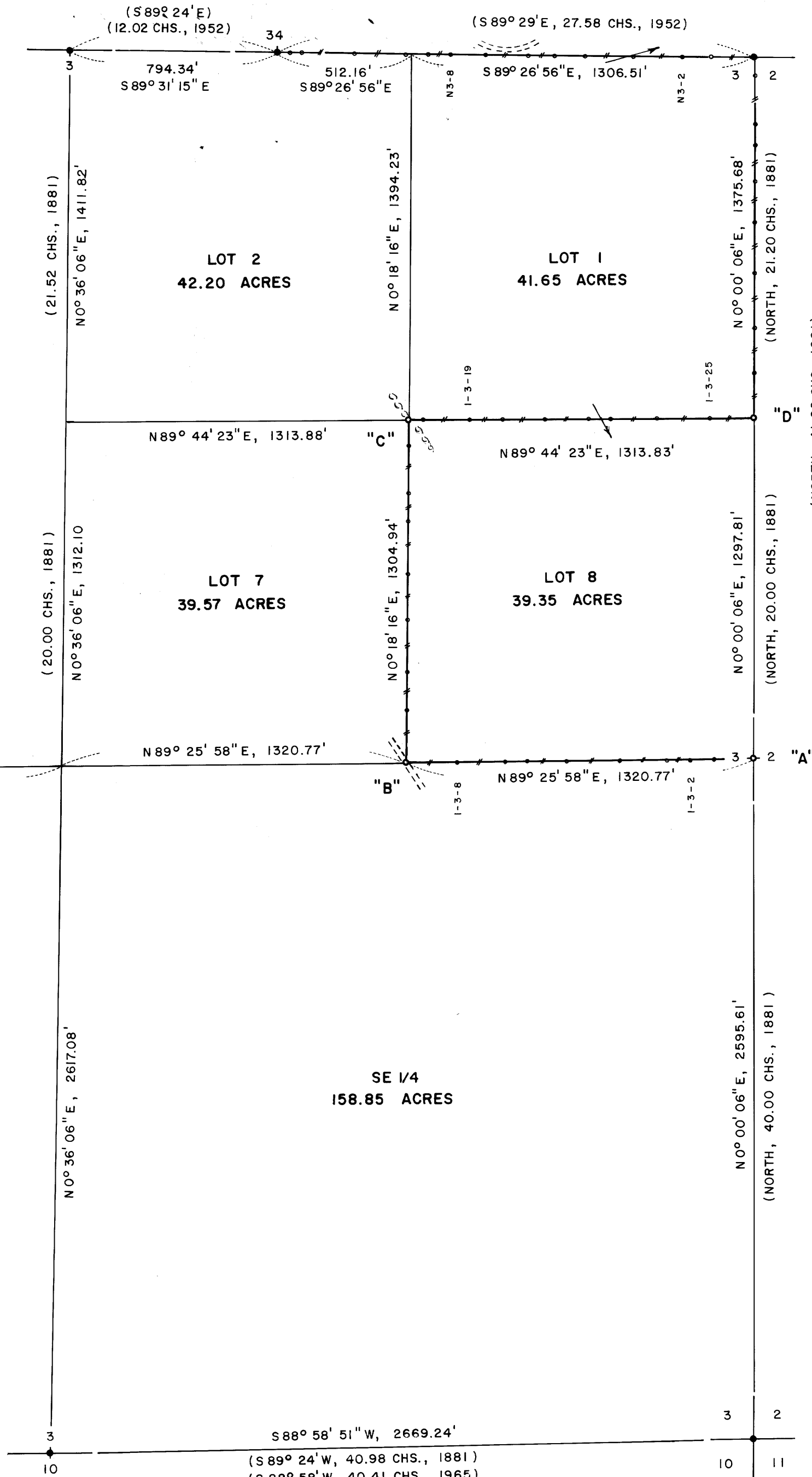
I, LES ROBERTS, REGISTERED PROFESSIONAL LAND SURVEYOR DO CERTIFY THAT I HAVE CORRECTLY SURVEYED SECTION 3 IN ACCORDANCE TO THE MANUAL OF INSTRUCTION FOR THE SURVEY OF THE PUBLIC LANDS OF THE UNITED STATES. THE EAST 1/4 CORNER OF SECTION 3 WAS SET BY SINGLE PROPORTIONATE MEASURE BETWEEN THE FOUND S.E. AND N.E. SECTION CORNERS. THIS PROPORTIONATE MEASURE WAS COMPUTED USING 40.00 CHAINS FOR THE SOUTH 1/2 AND 41.20 CHAINS FOR THE NORTH 1/2 AS SHOWN ON THE 1881 TOWNSHIP PLAT. THE CENTER 1/4 CORNER WAS ESTABLISHED AT THE INTERSECTION OF THE N-S & E-W CENTERLINES OF SECTION 3. THE C.E. 1/16 CORNER WAS SET HALFWAY BETWEEN THE EAST 1/4 CORNER AND THE CENTER 1/4 CORNER AS SHOWN. THE N.E. 1/16 CORNER WAS SET AT THE INTERSECTION OF THE N-S AND E-W CENTERLINES OF THE N.E. 1/4. THE NORTH 1/16 CORNER BETWEEN SECTIONS 2 AND 3 WAS SET BY SINGLE PROPORTIONATE MEASURE USING 20.00 CHAINS FOR THE SOUTH 1/2 AND 21.20 CHAINS FOR THE NORTH 1/2 AS SHOWN. A CLOSED MEANDER TRANSIT AND E.D.M. TRAVERSE WAS RUN BETWEEN ALL FOUND CORNERS AND USED FOR CONTROL. A CLOSED MEANDER TRANSIT AND E.D.M. TRAVERSE WAS RUN ALONG ALL BLAZED AND POSTED PROPERTY LINES. OFFSETS WERE COMPUTED FROM THIS MEANDER TRAVERSE TO THE TRUE PROPERTY LINE. PROPERTY LINES WERE MARKED WITH RED PAINTED BLAZES, RED RIBBON, YELLOW INTERNATIONAL PAPER COMPANY PROPERTY LINE SIGNS, FLUORESCENT ORANGE MAGNETIC MARKERS AND 1/2" x 60" IRON REBAR WITH ALUMINUM CAPS, LOCATED AS SHOWN. IRON REBAR AND BURIED MAGNETIC MARKERS ARE REFERENCED BY A 4" x 6" ALUMINUM INTERNATIONAL PAPER BOUNDARY LINE TAG NAILED TO A NEARBY TREE. TAG NOTES BEARING AND DISTANCE FROM TREE TO IRON ROD OR BURIED MAGNETIC MARKER.

**SOUTH 1/4 CORNER SECTION 3**

FD. 1965 B.L.M. BRASS CAP  
 18" W. FIR, S 71°E, 94.8' (SCAR VIS.), 1965 B.T.  
 20" FIR, N 46°E, 51.3' (SCAR VIS.), 1965 B.T.

**S.E. CORNER SECTION 3**

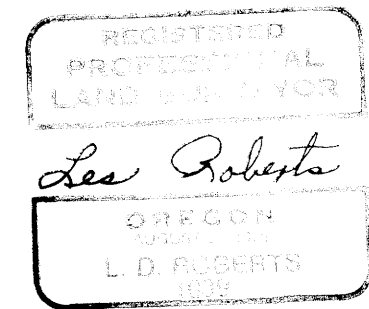
FD. 1962 DOUGLAS COUNTY BRASS CAP AND E-W FENCE  
 23" FIR, N 41°E, 34.5' (SCAR VIS.), 1962 B.T.  
 23" FIR, N 60°W, 76.6' (SCAR VIS.), 1962 B.T.  
 25" FIR, S 33°W, 57.4' (SCAR VIS.), 1962 B.T.



SURVEY OF  
 SECTION 3, T22S, R8W, W.M.  
 DOUGLAS COUNTY, OREGON  
 FOR  
 INTERNATIONAL PAPER COMPANY  
 BY  
 ROBERTS SURVEYING INC.  
 29 WEST 29TH STREET  
 EUGENE, OREGON 97405  
 JUNE 4, 1986

**LEGEND**

- CORNERS FOUND AND USED FOR CONTROL
- CORNERS SET, 1 1/4" x 36" IRON PIPES AND BRASS CAPS. CAPS STAMPED S-T-R, DATE AND P.L.S. NO. 1039.
- LINE MARKED AND BLAZED THIS SURVEY.
- ( ) DATA OF RECORD, 1881 AND 1952 G.L.O. SURVEYS. ALSO 1965 B.L.M. SURVEY
- (M.M.) INDICATES LOCATION OF BURIED MAGNETIC MARKERS. MARKERS ARE FLUORESCENT ORANGE IN COLOR AND ARE BURIED, 12" TO 18" DEEP, ALONG LINE AS SHOWN.
- BASIS OF BEARING, SOLAR OBSERVATION.
- DISTANCE TO B.T.'S ARE CENTER MEASURE.
- ALL NEW B.T.'S ARE SCRIBED AND HAVE AN ALUMINUM WASHER STAMPED "P.L.S. 1039" NAILED TO LOWER BLAZE. SCRIBED BLAZES ARE PAINTED RED.
- ALL NEW B.T.'S HAVE A 6" STEEL SPIKE DRIVEN INTO THE CENTER OF THE TREE TO SERVE AS A CHAINING POINT FOR MEASURED DISTANCES.
- SCALE 1" = 400'



LOCATION OF MAGNETIC MARKERS					
E. 1/4 COR.	0'	WEST (M.M. & FC. POST)	N. 1/16 COR.	0'	NORTH (R.R. & FC. POST)
I-3-1	147'	WEST (M.M.)	E3-1	170'	NORTH (M.M.)
I-3-2	234'	WEST (M.M. & REBAR)	E3-2	234'	NORTH (M.M. & REBAR)
I-3-3	323'	WEST (M.M.)	E3-3	548'	NORTH (M.M.)
I-3-4	504'	WEST (M.M. & REBAR)	E3-4	743'	NORTH (M.M. & REBAR)
I-3-5	708'	WEST (M.M.)	E3-5	898'	NORTH (M.M.)
I-3-6	861'	WEST (M.M. & REBAR)	E3-6	1036'	NORTH (M.M. & REBAR)
I-3-7	942'	WEST (M.M.)	E3-7	1115'	NORTH (M.M.)
I-3-8	1124'	WEST (M.M. & REBAR)	E3-8	1306'	NORTH (M.M.)
C.E. 1/16	1321'	WEST (R.R. SPIKE)	N.E. COR.	1376'	NORTH (FC. POST)
I-3-10	199'	NORTH (M.M.)	N3-1	167'	WEST (M.M.)
I-3-11	342'	NORTH (M.M. & REBAR)	N3-2	276'	WEST (M.M. & REBAR)
I-3-12	542'	NORTH (M.M.)	N3-3	463'	WEST (M.M.)
I-3-13	721'	NORTH (M.M. & REBAR)	N3-4	646'	WEST (M.M. & REBAR)
I-3-14	918'	NORTH (M.M.)	N3-5	763'	WEST (M.M.)
I-3-15	1023'	NORTH (M.M. & REBAR)	N3-6	868'	WEST (M.M. & FC. POST)
I-3-16	1204'	NORTH (M.M.)	N3-7	1030'	WEST (M.M.)
N.E. 1/16	1305'	NORTH (M.M. & FC. POST)	N3-8	1158'	WEST (M.M. & REBAR)
I-3-18	53'	EAST (M.M.)	N3-9	1244'	WEST (M.M.)
I-3-19	223'	EAST (M.M. & REBAR)	N3-10	1333'	WEST (M.M. & REBAR)
I-3-20	350'	EAST (M.M.)	N3-11	1530'	WEST (M.M.)
I-3-21	515'	EAST (M.M. & REBAR)	N3-12	1727'	WEST (M.M. & REBAR)
I-3-22	682'	EAST (M.M.)	N3-13	1778'	WEST (NO M.M.)
I-3-23	766'	EAST (M.M. & REBAR)	W. COR.	1819'	WEST (FC. POST)
I-3-24	939'	EAST (M.M.)			
I-3-25	1142'	EAST (M.M. & REBAR)			
N. 1/16 COR.	1314'	EAST (R.R. & FC. POST)			

U.S. File 63/18  
 Map File M102-18

U.S. File 63/18  
 Map File M102-18