

COUNTY SURVEYORS FILE DATA  
DO NOT REMOVE FROM OFFICE

# Survey of Deed Description and for Adjustments of Lot Lines

for Fred Cady

SW 1/4 Sec. 30, T. 21 S., R. 4 W., W.M.  
DOUGLAS COUNTY, OREGON.

FILED

JUL 18 1986 TF

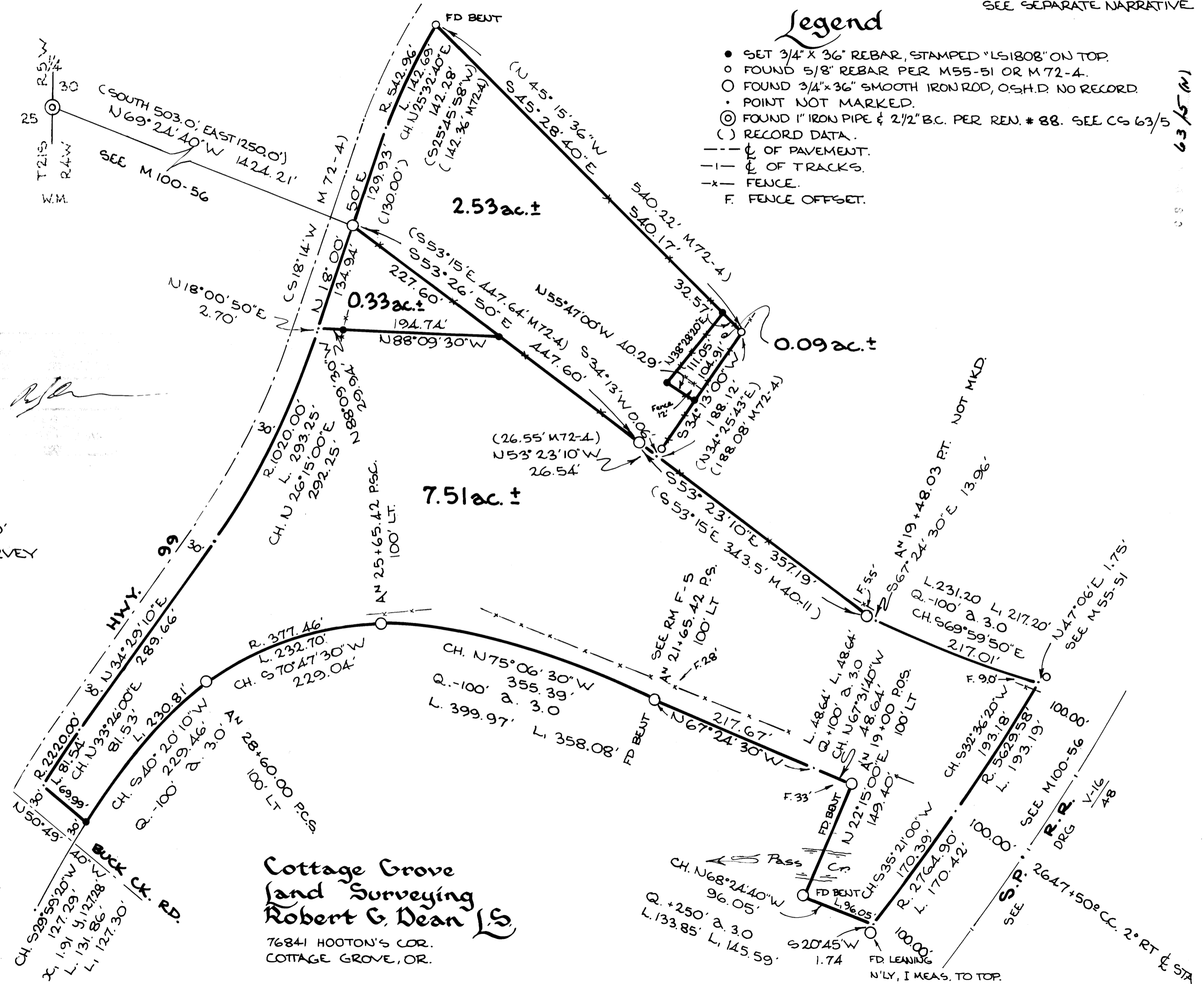
COUNTY SURVEYOR  
DOUGLAS COUNTY, OREGON  
TF

SEE SEPARATE NARRATIVE

## Legend

- SET 3/4" X 36" REBAR, STAMPED "LS1808" ON TOP.
- FOUND 5/8" REBAR PER M55-51 OR M72-4.
- FOUND 3/4" X 36" SMOOTH IRON ROD, O.S.H.D. NO RECORD.
- POINT NOT MARKED.
- ⊙ FOUND 1" IRON PIPE & 2 1/2" B.C. PER REN. # 88. SEE CS 63/5
- ( ) RECORD DATA.
- & OF PAVEMENT.
- - - & OF TRACKS.
- x - FENCE.
- F. FENCE OFFSET.

63/5 (M)  
M102-17



NORTH  
BASED ON SOLAR OBSERVATIONS  
IN PREVIOUS SURVEY M100-56

SCALE 1" = 100'  
DATE OF SURVEY  
JULY 12, 1986

**Cottage Grove  
Land Surveying  
Robert G. Dean L.S.**  
76841 HOOTON'S COR.  
COTTAGE GROVE, OR.

CS File 63/5 (M)  
Map File M102-17

V-16  
48

M102-17



FILED

FL

JUL 18 1986 TF

COUNTY SURVEYOR  
DOUGLAS COUNTY, ORE.

TF

SURVEY NARRATIVE  
(see map)

Survey of Deed Description and for Adjustments of Lot Lines  
for Fred Cady

Location: SW 1/4, Sec. 30, T.21 S., R.4 W., W.M., Douglas County,  
Oregon.

Date of Survey: July 12, 1986

Purpose: To find or mark the corners of land described in the deed  
recorded in Book 935 Page 108 of Douglas County Clerk's records and to  
provide a new metes and bounds description of said land;

Also to mark the corners of and to provide metes and bounds  
descriptions of line adjustments to "TRACT 1" shown in M.L.P. Book 3  
Page 242 of Douglas County partition records.

Procedure: Bearings are based on solar observations from my previous  
survey M100-56. Side loops and ties were run from the perimeter  
control traverse of that survey, using Topcon DMC2 EDM and Topcon  
TL60E theodolite.

The centerline of tracks of the Southern Pacific railroad were  
located as shown in M100-56. Oregon State Highway Division monuments  
control boundaries where they were found. Those found bent were  
straightened and reset to vertical.

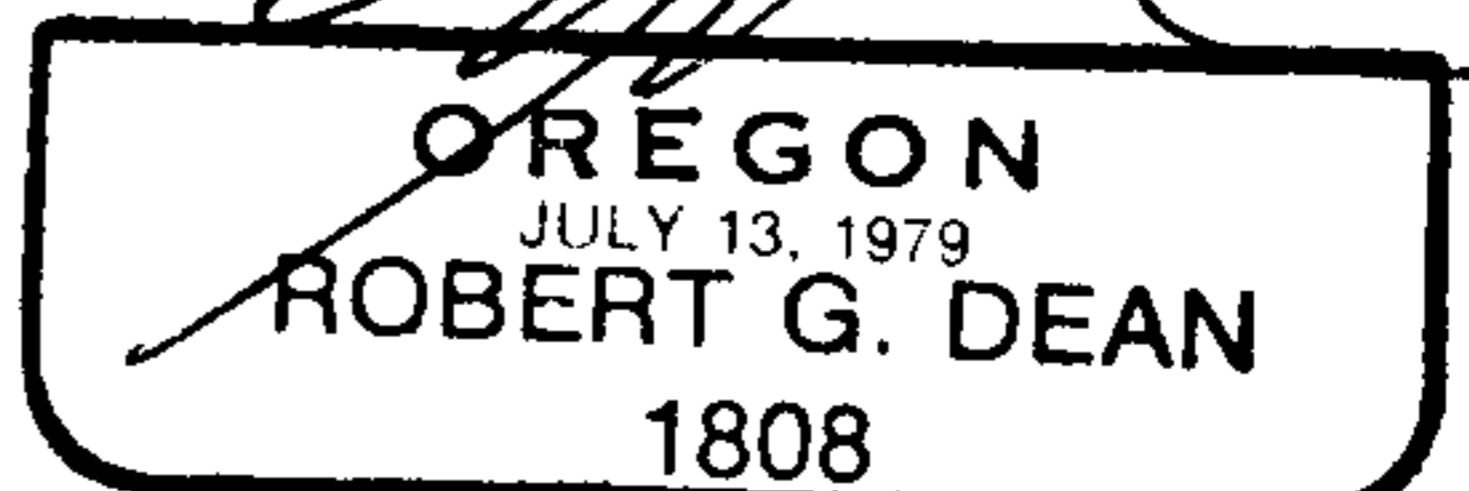
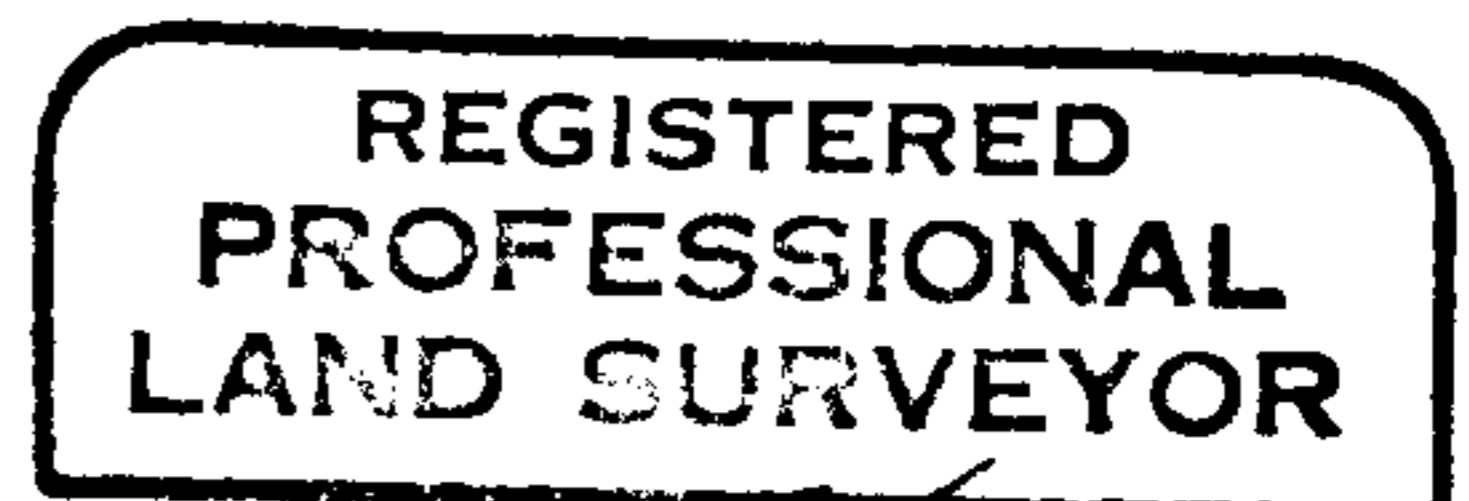
There is no official record of these monuments apart from Roll  
Map F-5 which shows them as "Not Recovered 8-20-84".

The intersections of offset spirals with the railway right-of-way  
were calculated from the tangent direction of A 19+48.03 P.T. to A  
21+65.42 P.S. of N 67\*-24'-30" W.

The intersection of the offset spiral with the right-of-way of  
Buck Creek Road was calculated from the tangent direction of N.29\*-07'-  
45" E. calculated as deflected from the long chord between monuments  
of A 25+65.42 P.S.C. 100' L.T. and A 28+60.00 P.C.S. 100' L.T.

The right-of-way lines of Buck Creek Road and Highway 99 are 30  
feet from the painted centerlines of pavement.

The lines of land shown in "TRACT 1" of MLP 3/242 were found  
monumented as originally surveyed.



76841 Hooton's Corner  
~~XXXXXXXXXX~~ • COTTAGE GROVE, OR 97424

C.S. File No. 63/50-6