

— SURVEY HISTORY —

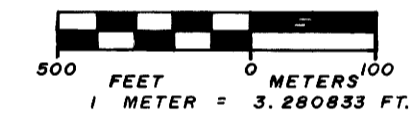
IN 1867, J. MELDRUM SURVEYED THE EAST LINE, SOUTH LINE AND THE SOUTH HALF OF THE WEST LINE. IN 1874 W. BYARS SURVEYED THE EAST HALF OF THE NORTH LINE. IN 1893, W. THIEL SURVEYED THE WEST LINE, ESTABLISHING A NEW 1/4 CORNER. IN 1894, N. MARTIN RETRACED THE SOUTH AND WEST LINES ESTABLISHING NEW 1/4 CORNERS.

— NARRATIVE —

THIS SURVEY WAS MADE IN MAY AND JUNE, 1986 BY DANIEL W. BAKER OF PEEL BAKER LAND SURVEYING INC., 1262 LAWRENCE ST. - SUITE 4, EUGENE, OREGON 97401. THE PURPOSE OF THIS SURVEY WAS TO LOCATE AND MARK A PORTION OF THE BOUNDARY LINES OF THE PROPERTY BELONGING TO THE UNITED STATES FOREST SERVICE IN SECTION 30, T20S, R10W, W.M. A KERN KLM THEODOLITE, DN 502 E.D.M. AND AN AGA 76 GEODOMETER WERE USED TO PERFORM THIS SURVEY. RANDOM TRANSIT TRAVERSES WITH A MINIMUM ERROR OF CLOSURE OF 1/5,000' WERE RUN BETWEEN FOUND CORNERS FOR CONTROL. BEARINGS WERE BASED ON A SOLAR OBSERVATION. OFFSETS FROM THE RANDOM TRAVERSE LINE TO THE TRUE BOUNDARY LINE WERE CALCULATED AND USED TO DETERMINE THE POSITION OF THE TRUE LINE. THE BOUNDARY LINE WAS MARKED IN THE FIELD BY PLACING 6 FT. ORANGE FIBERGLASS POSTS, MARKED "PROPERTY BOUNDARY" AT INTERVALS OF 150 FEET MAXIMUM, AND 4 OR 1 FOOT OF LINE ON THE TRUE BOUNDARY LINE. THE NORTHWEST, SOUTHWEST AND SOUTHEAST SECTION CORNERS AND THE NORTH AND EAST 1/4 CORNERS WERE FOUND AND USED FOR CONTROL. THE EVIDENCE AT THE EAST 1/4 CORNER WAS ACCEPTED AS BEING THE POSITION FOR THE 1/4 CORNER. THE SOUTH AND WEST 1/4 CORNERS WERE SEARCHED FOR BUT NOT FOUND. THE SOUTH 1/4 CORNER WAS SET AT PROPORTIONATE DISTANCE BETWEEN THE SOUTHWEST AND SOUTHEAST SECTION CORNERS, BASED ON THE RETURN OF THE 1894 RETRACEMENT OF SAID LINE BY NATHANIEL MARTIN. THE 1/2" IRON PIPE AS SHOWN ON COUNTY SURVEY FILE NO. M10-3 AS THE SOUTH 1/4 CORNER WAS SET AT PROPORTIONATE DISTANCE BASED ON THE RETURN OF THE 1867 SURVEY BY JOHN MELDRUM, WAS FOUND BUT NOT ACCEPTED BY ME AS THE CORRECT POSITION FOR THE SOUTH 1/4 CORNER. THE WEST 1/4 CORNER WAS SET AT PROPORTIONATE DISTANCE BETWEEN THE SOUTHWEST AND NORTHWEST SECTION CORNERS BASED ON THE RETURN OF THE 1894 RETRACEMENT OF THE RANGE LINE (BETWEEN RANGES 10 AND 11 WEST) BY NATHANIEL MARTIN. THE CENTER 1/4 CORNER WAS SET AT THE POINT OF INTERSECTION OF THE NORTH-SOUTH AND EAST-WEST CENTERLINES. THE CENTER-EAST 1/16 CORNER WAS SET AT MID-POINT BETWEEN THE CENTER 1/4 CORNER AND THE EAST 1/4 CORNER. WITNESS POINTS WERE SET ON THE WEST BANK OF THE NORTH FORK OF SMITH RIVER ON THE SOUTH LINE OF THE SECTION AND ON THE EAST-WEST CENTERLINE TO MARK THE BOUNDARY OF A PENDING LAND EXCHANGE BETWEEN THE U.S. FOREST SERVICE AND INTERNATIONAL PAPER COMPANY. ALL CORNERS SET IN THIS SURVEY WERE MONUMENTED WITH U.S.D.A. FOREST SERVICE ALUMINUM MONUMENTS WITH AN ORANGE MAGNETIC LOCATOR BURIED AT THE BASE OF THE MONUMENT. ALL BEARING TREES ESTABLISHED IN THIS SURVEY WERE DOUBLE BLAZED WITH A WASHER STAMPED "PLS 1978" NAILED IN LOWER BLAZE. DISTANCE TO BEARING TREE WAS MEASURED FROM THE CORNER TO A 7" SPIKE IN THE SIDE AT CENTER OF TREE. REFERENCE MONUMENTS WERE SET ON BOUNDARY LINES AND WERE MARKED WITH DISTANCE AND BEARING TO THE CORNER MONUMENT. ALL CORNER MONUMENTS AND BEARING TREES WERE MARKED AS SHOWN ON THIS PLAT.

BASIS OF BEARING: SOLAR OBSERVATION

SCALE: 1" = 500'



- CORNERS FOUND
- ⊙ CORNERS SET THIS SURVEY
- BOUNDARY LINE MARKED WITH ORANGE FIBERGLASS POSTS
- () G.L.O. BEARING AND DISTANCE — N. MARTIN, 1894
- (()) G.L.O. BEARING AND DISTANCE — J. MELDRUM, 1867
- △ WITNESS POINT SET THIS SURVEY

I, DANIEL W. BAKER, A REGISTERED PROFESSIONAL LAND SURVEYOR IN THE STATE OF OREGON, HEREBY CERTIFY THAT THIS PLAT AND THE NOTES HEREON ARE A CORRECT REPRESENTATION OF A SURVEY PERFORMED AT THE REQUEST OF THE U.S.D.A. FOREST SERVICE, IN ACCORDANCE WITH THE STATUTES OF THE STATE OF OREGON.

RECORD OF SURVEY
SECTION 30, T20S, R10W, W.M.
DOUGLAS COUNTY, OREGON

FOR
U.S. FOREST SERVICE
BY
PEEL BAKER LAND SURVEYING INC.
JUNE 10, 1986

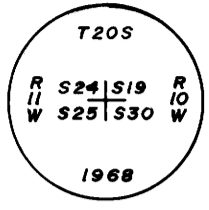
SLICK CADASTRAL SURVEY
RFQ 86-824 - RO. NO. 00-0470-6-80014
FIELD BOOKS, SLICK 1 & 2

COUNTY SURVEYORS FILE DATA
DO NOT REMOVE FROM OFFICE

REGISTERED
PROFESSIONAL
LAND SURVEYOR
Daniel W. Baker
OREGON
JULY 16, 1982
DANIEL W. BAKER
1978

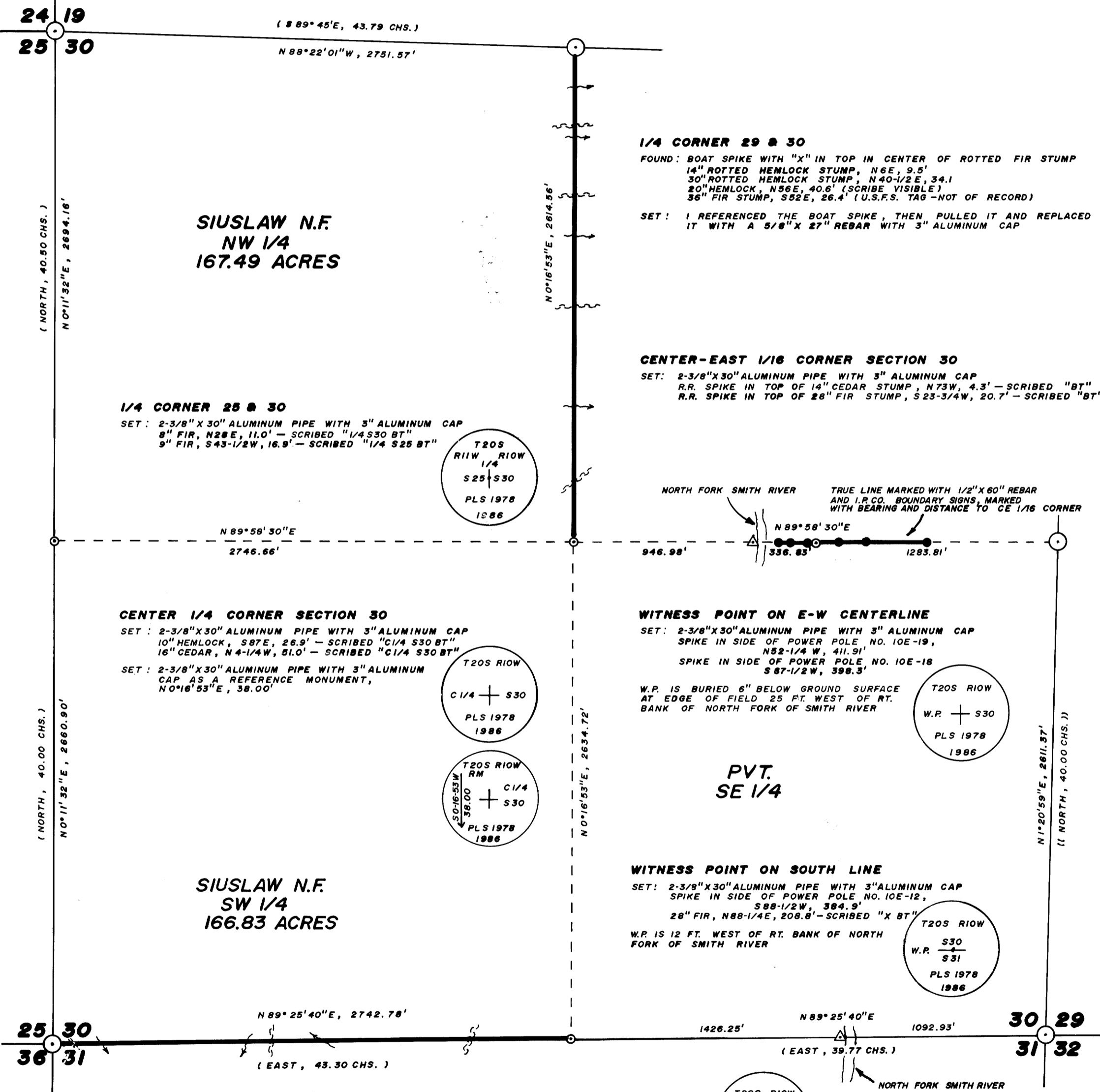
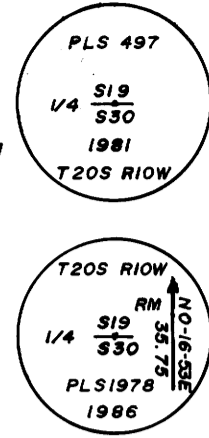
SECTION CORNER 19, 24, 25, 30

FOUND: 1-1/4" IRON PIPE WITH DOUGLAS CO. BRASS CAP
16" MAPLE, N 3-1/2° E, 24.0' (SCRIBE VISIBLE)
48" ROTTED FIR STUB, N 69-3/4° E, 10.8' (NO MARKS)
16" MAPLE, S 62-1/4° E, 26.5' (SCRIBE VISIBLE)
50" FIR, S 1-1/2° E, 69.9' (CLOSED FACE)
40" FIR, S 80-3/4° W, 26.7' (CLOSED FACE)
8" FIR, S 83-3/4° W, 22.3' (CLOSED FACE)
17" FIR, N 28° W, 27.6' (CLOSED FACE)
40" FIR, N 1-1/4° W, 89.7' (CLOSED FACE)



1/4 CORNER 19 & 30

FOUND: 1-1/2" IRON PIPE WITH BRASS CAP
14" FIR, S 48-1/4° E, 30.3' (CLOSED FACE)
22" CEDAR, N 61° W, 46.1' (CLOSED FACE)
SET: 2-3/8" X 30" ALUMINUM PIPE WITH 3" ALUMINUM CAP AS A REFERENCE MONUMENT, S 0° 16' 53" W, 35.75'

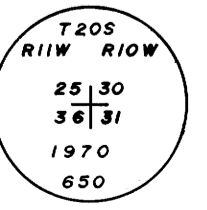


LOCATION OF 1/2" X 60" REBAR

DISTANCE	DIRECTION TO CE 1/16 COR.
587'	EAST
263'	EAST
115'	EAST
38'	WEST
132'	WEST
194'	WEST

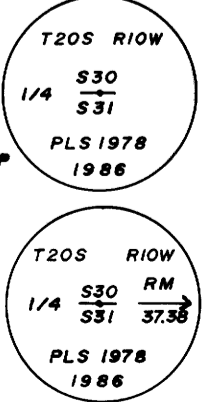
SECTION CORNER 25, 30, 31, 36

FOUND: 2-1/2" IRON PIPE WITH BRASS CAP
7" DEAD CHITTUM, S 71-1/2° E, 27.4'
63" FIR, S 17-3/4° W, 73.4' - BARK SCRIBED
18" ROTTED MAPLE, N 31-1/2° W, 24.6'
16" CEDAR, N 16-1/2° W, 46.2' - CLOSED FACE
MARKED NEW: 72" SPRUCE, S 72-3/4° E, 74.3' SCRIBED "T20S R10W S31 BT"



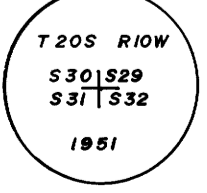
1/4 CORNER 30 & 31

SET: 2-3/8" X 30" ALUMINUM PIPE WITH 3" ALUMINUM CAP
16" CEDAR, S 2-1/4° W, 18.1' - SCRIBED "1/4 S31 BT"
16" CEDAR, N 87-1/2° W, 26.8' - SCRIBED "1/4 S30 BT"
SET: 2-3/8" X 30" ALUMINUM PIPE WITH 3" ALUMINUM CAP AS A REFERENCE MONUMENT, S 89° 25' 40" W, 37.38'
NOTE: 1/2" IRON PIPE (M10-3) BEARS S 88° 32' 09" W, 98.20'



SECTION CORNER 29, 30, 31, 32

FOUND: 2-1/2" IRON PIPE WITH BRASS CAP
30" FIR STUMP, S 87-1/2° E, 49.7' (CLOSED FACE)
12" MAPLE, S 67-3/4° E, 28.8' (CLOSED FACE)
24" CEDAR, S 40-3/4° W, 7.9' (CLOSED FACE)
16" FIR, N 22-3/4° W, 37.0' (SCRIBE VISIBLE)
15" FIR STUMP, N 3-3/4° W, 35.1' (CLOSED FACE)
12" FIR, N 0-1/2° W, 53.2' (CLOSED FACE)



MAP FILE M102-12

MAP FILE M102-12