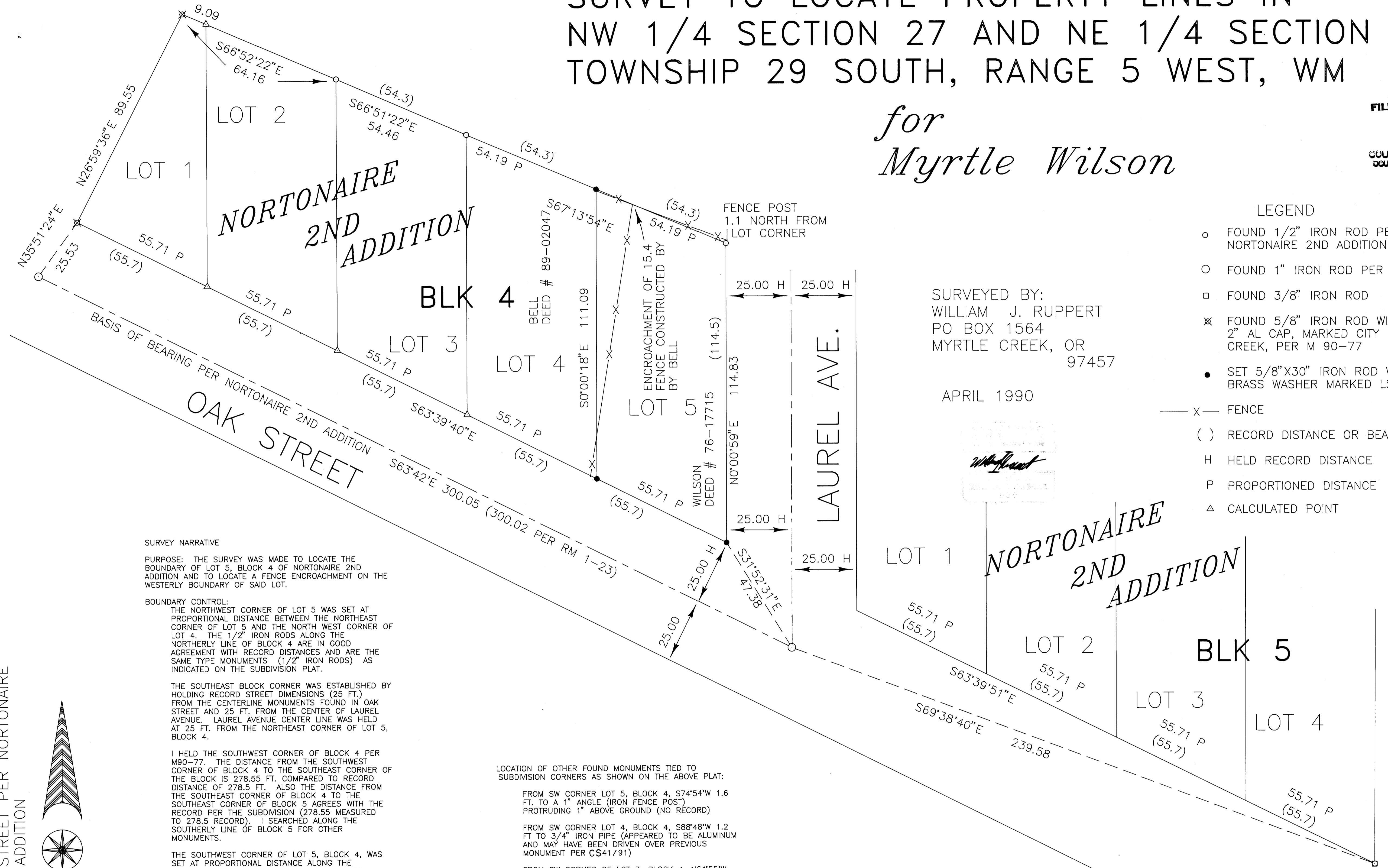


COUNTY SURVEYORS FILE DATA
DO NOT REMOVE FROM OFFICE

SURVEY TO LOCATE PROPERTY LINES IN NW 1/4 SECTION 27 AND NE 1/4 SECTION 28 TOWNSHIP 29 SOUTH, RANGE 5 WEST, WM

for Myrtle Wilson

FILED
MAY 8 1990
COUNTY SURVEYOR
DOUGLAS COUNTY, ORE.

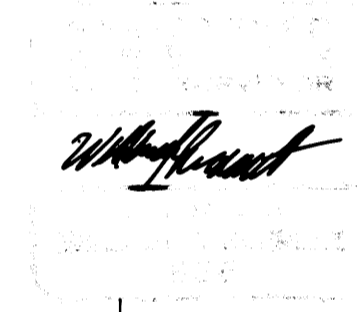


LEGEND

- FOUND 1/2" IRON ROD PER NORTONAIRE 2ND ADDITION
- FOUND 1" IRON ROD PER RM 1-23
- FOUND 3/8" IRON ROD
- ⊗ FOUND 5/8" IRON ROD WITH 2" AL CAP, MARKED CITY OF MYRTLE CREEK, PER M 90-77
- SET 5/8" X 30" IRON ROD WITH 3/4" BRASS WASHER MARKED LS866
- X — FENCE
- () RECORD DISTANCE OR BEARING
- H HELD RECORD DISTANCE
- P PROPORTIONED DISTANCE
- △ CALCULATED POINT

SURVEYED BY:
WILLIAM J. RUPPERT
PO BOX 1564
MYRTLE CREEK, OR
97457

APRIL 1990



SURVEY NARRATIVE

PURPOSE: THE SURVEY WAS MADE TO LOCATE THE BOUNDARY OF LOT 5, BLOCK 4 OF NORTONAIRE 2ND ADDITION AND TO LOCATE A FENCE ENCROACHMENT ON THE WESTERLY BOUNDARY OF SAID LOT.

BOUNDARY CONTROL:

THE NORTHWEST CORNER OF LOT 5 WAS SET AT PROPORTIONAL DISTANCE BETWEEN THE NORTHEAST CORNER OF LOT 5 AND THE NORTH WEST CORNER OF LOT 4. THE 1/2" IRON RODS ALONG THE NORTHERLY LINE OF BLOCK 4 ARE IN GOOD AGREEMENT WITH RECORD DISTANCES AND ARE THE SAME TYPE MONUMENTS (1/2" IRON RODS) AS INDICATED ON THE SUBDIVISION PLAT.

THE SOUTHWEST BLOCK CORNER WAS ESTABLISHED BY HOLDING RECORD STREET DIMENSIONS (25 FT.) FROM THE CENTERLINE MONUMENTS FOUND IN OAK STREET AND 25 FT. FROM THE CENTER OF LAUREL AVENUE. LAUREL AVENUE CENTER LINE WAS HELD AT 25 FT. FROM THE NORTHEAST CORNER OF LOT 5, BLOCK 4.

I HELD THE SOUTHWEST CORNER OF BLOCK 4 PER M90-77. THE DISTANCE FROM THE SOUTHWEST CORNER OF BLOCK 4 TO THE SOUTHEAST CORNER OF THE BLOCK IS 278.55 FT. COMPARED TO RECORD DISTANCE OF 278.5 FT. ALSO THE DISTANCE FROM THE SOUTHWEST CORNER OF BLOCK 4 TO THE SOUTHEAST CORNER OF BLOCK 5 AGREES WITH THE RECORD PER THE SUBDIVISION (278.55 MEASURED TO 278.5 RECORD). I SEARCHED ALONG THE SOUTHERLY LINE OF BLOCK 5 FOR OTHER MONUMENTS.

THE SOUTHWEST CORNER OF LOT 5, BLOCK 4, WAS SET AT PROPORTIONAL DISTANCE ALONG THE SOUTHERLY LINE OF BLOCK 4 AS ESTABLISHED ABOVE.

I DID NOT HOLD THE MONUMENTS PER CS41/91 AS ORIGINAL LOT CORNERS ALTHOUGH THEY MAY BE RECOGNIZED BY OTHER OWNERS AS PROPERTY CORNERS. THE DISTANCE FROM THE SOUTHWEST CORNER OF LOT 3 (PER CS41/91) IS NOT ORIGINAL AND DOES NOT FIT AS WELL AS OTHER MONUMENTS THAT WERE FOUND. HAD THIS MONUMENT BEEN HELD, THE SOUTHWEST CORNER OF LOT 5 WOULD HAVE BEEN LOCATED WESTERLY APPROX. 0.5 FT.

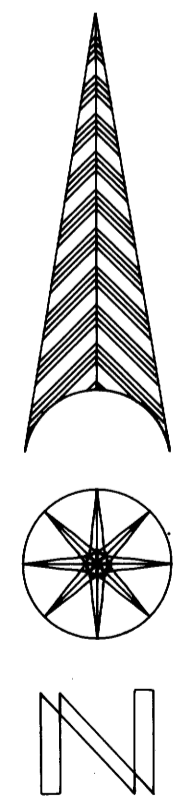
LOCATION OF OTHER FOUND MONUMENTS TIED TO SUBDIVISION CORNERS AS SHOWN ON THE ABOVE PLAT:

- FROM SW CORNER LOT 5, BLOCK 4, S74°54'W 1.6 FT. TO A 1" ANGLE (IRON FENCE POST) PROTRUDING 1" ABOVE GROUND (NO RECORD)
- FROM SW CORNER LOT 4, BLOCK 4, S88°48'W 1.2 FT TO 3/4" IRON PIPE (APPEARED TO BE ALUMINUM AND MAY HAVE BEEN DRIVEN OVER PREVIOUS MONUMENT PER CS41/91)
- FROM SW CORNER OF LOT 3, BLOCK 4, N64°55'W 15.7 FT. TO A 1/2" IRON PIPE.
- FROM SW CORNER LOT 1, BLOCK 4, S63°24'E 45.66 FT. TO A 5/8" IRON ROD WITH 2" ALUMINUM CAP STAMPED PER CITY OF MYRTLE CREEK

EQUIPMENT: LIETZ T60D THEODOLITE, MAC II EDM, AND 100 FT. STEEL TAPE.

NOTE:
ENCROACHING FENCE
WAS MOVED INSIDE LOT 4
AFTER MONUMENTS WERE SET

BASED ON CENTERLINE OF
OAK STREET PER NORTONAIRE
2ND ADDITION



SCALE
1" = 20'