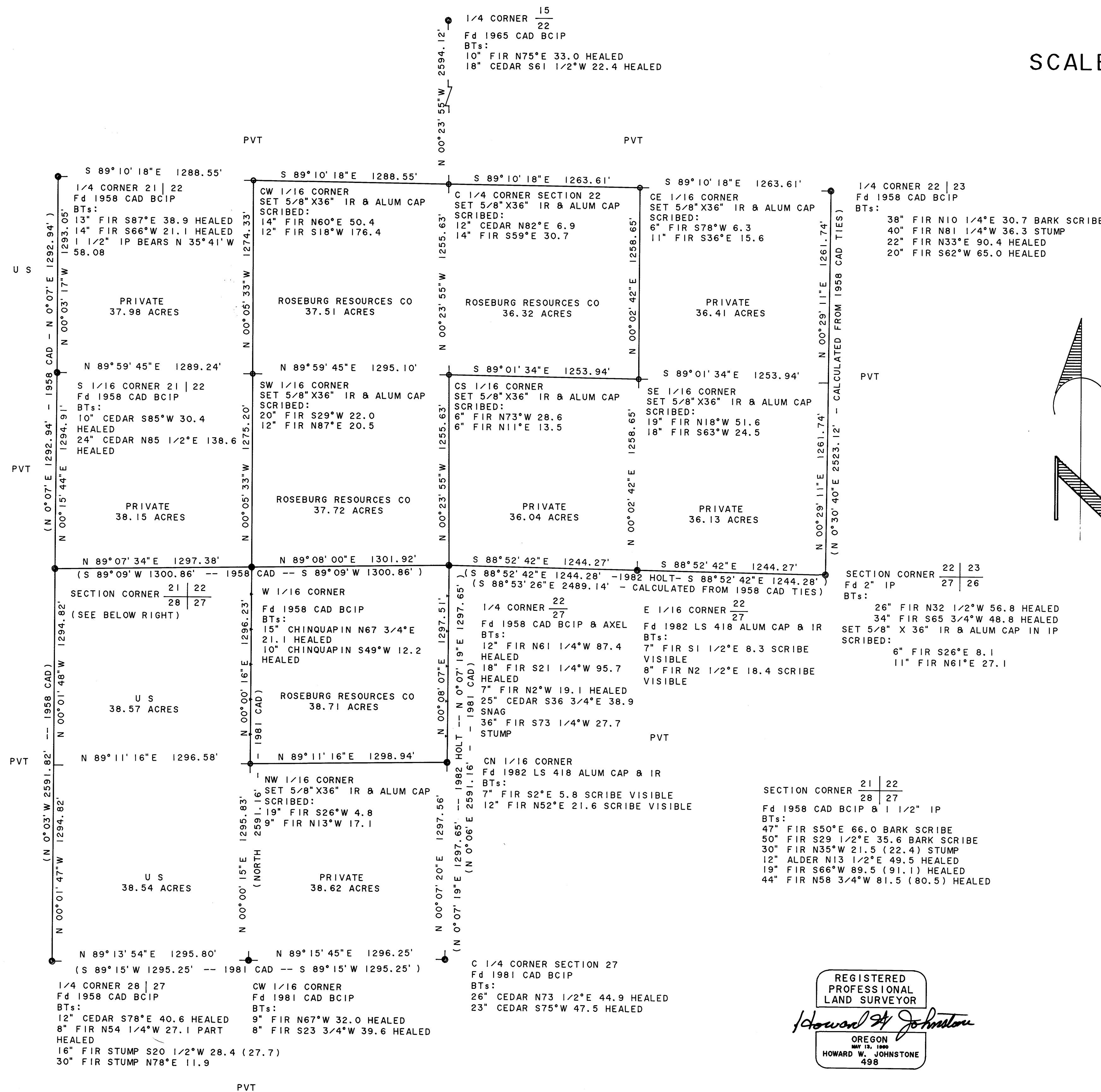


RESURVEY AND SUBDIVISION OF S 1/2 SECTION 22 AND NW 1/4 SECTION 27, T28S, R4W, WILLAMETTE MERIDIAN, OREGON

FOR ROSEBURG RESOURCES COMPANY MARCH 7, 1986 REVISED MARCH 23, 1990

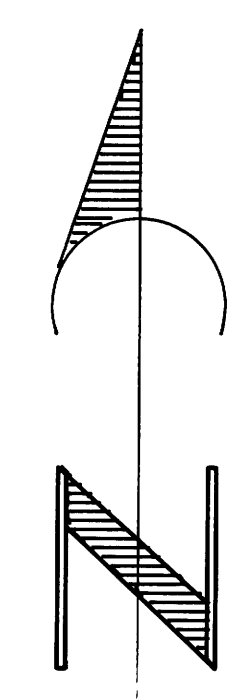
FILED
APR 2 1990
COUNTY SURVEYOR
DOUGLAS COUNTY, ORE

SCALE: 1" = 400'



LEGEND

- FOUND MONUMENT AS NOTED
- SET 5/8" IR & ALUM CAP MARKED "LS 498"
- SECTION OR PROPERTY LINE
- LINE REFERENCED TO ALUM TAGS
- () RECORD DATA



BEARING BASED ON HOLTS EAST 1/2 OF LINE BETWEEN SECTIONS 22 & 27

SECTION CORNER 21 | 22
28 | 27
Fd 1958 CAD BCIP & 1 1/2" IP
BTs:
47" FIR S50°E 66.0 BARK SCRIBE
50" FIR S29 1/2°E 35.6 BARK SCRIBE
30" FIR N35°W 21.5 (22.4) STUMP
12" ALDER N13 1/2°E 49.5 HEALED
19" FIR S66°W 89.5 (91.1) HEALED
44" FIR N58 3/4°W 81.5 (80.5) HEALED

REGISTERED PROFESSIONAL LAND SURVEYOR

Howard W. Johnstone
OREGON
MAY 13, 1988
HOWARD W. JOHNSTONE
498

I RAN A CLOSED TRAVERSE IN SECTIONS 22 AND 27 USING A NIKON NTD-4 TOTAL STATION. I ACHIEVED A PRECISION OF 1:40,887 AND ADJUSTED THE TRAVERSE BY THE CRANDALL METHOD. I SET THE CORNERS BY STANDARD SUBDIVISION PROCEDURE BASED ON THE LOCATION OF THE EXISTING MONUMENTS. PREVIOUS SURVEYS WERE DONE BY IRVING ZIRPEL JR. AND WILLIAM GLENN IN 1958, JAMES JELLEY IN 1981 AND BURTON HOLT IN 1982.

A 1990 CHECK REVEALED AN ERROR BETWEEN S 1/16 AND 1/4 CORNER BETWEEN SECTIONS 21 & 22 RESULTING IN THE RELOCATION OF CORNERS IN SECTION 22 AS SHOWN ON THIS PLAT. THIS MAP REPLACES M 100-47

HOWARD W. JOHNSTONE
P. O. BOX 1088
ROSEBURG, OREGON