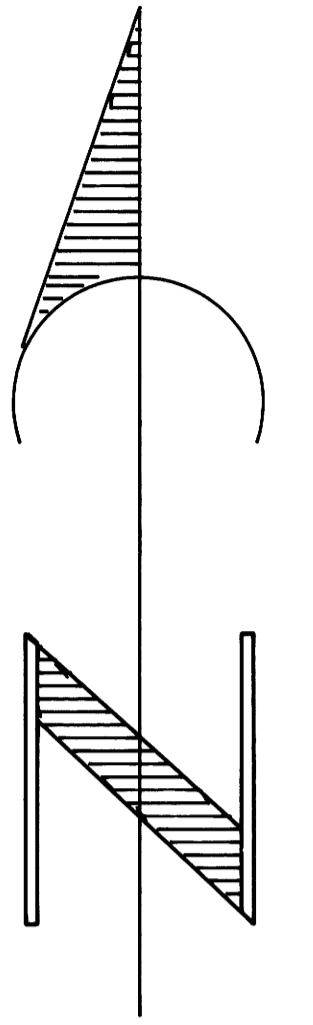


RESURVEY & SUBDIVISION OF SECTION 16 AND 17 T29S R6W, W. M. OREGON

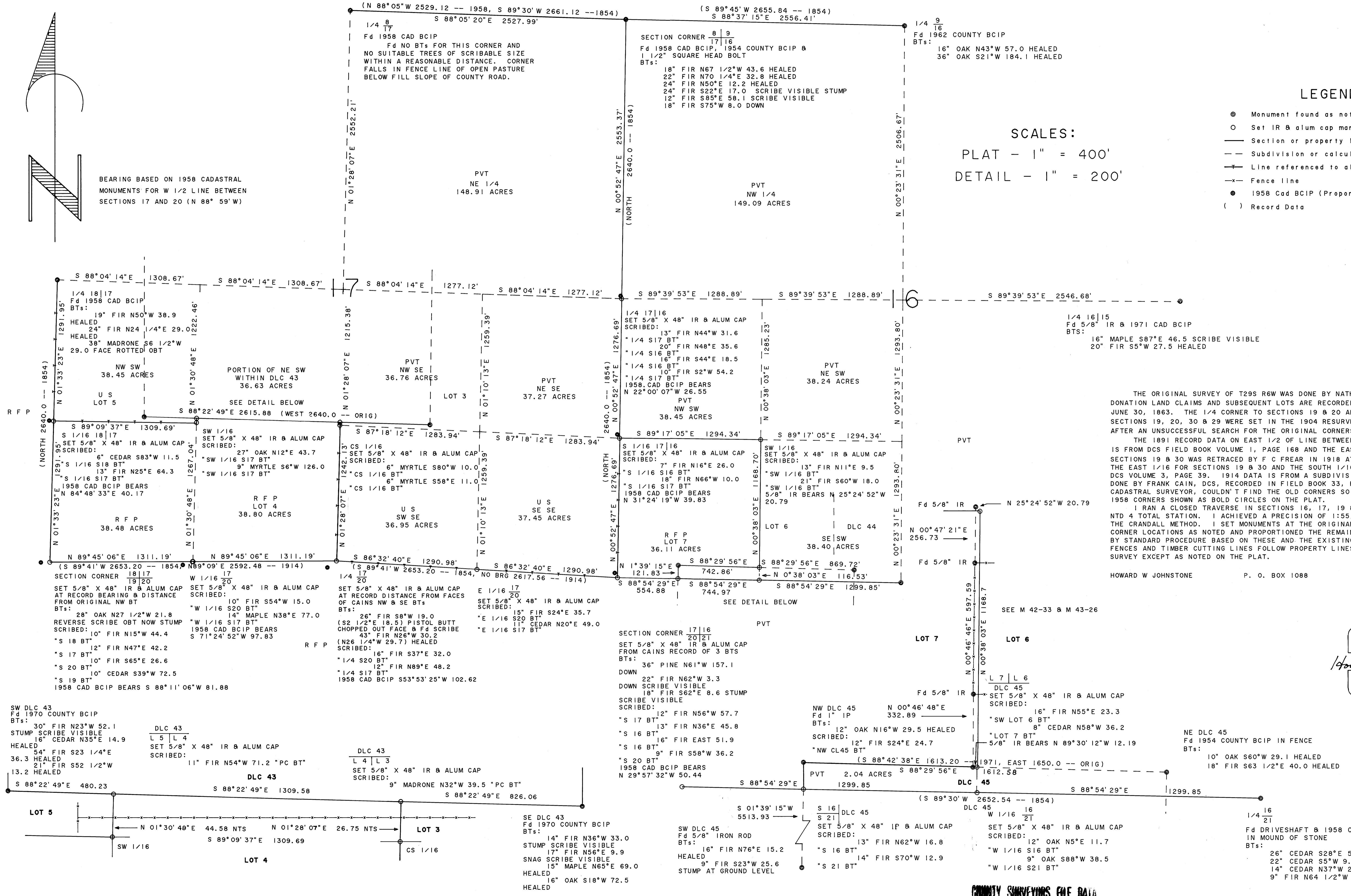
FILED
COUNTY SURVEYOR
DOUGLAS COUNTY, OREG

FOR ROSEBURG FOREST PRODUCTS CO

DECEMBER 26, 1989



BEARING BASED ON 1958 CADASTRAL MONUMENTS FOR W 1/2 LINE BETWEEN SECTIONS 17 AND 20 (N 88° 59' W)



LEGEND

- ⊙ Monument found as noted
- Set IR & alum cap marked R R Co, LS 498
- Section or property line
- - - Subdivision or calculated line
- Line referenced to aluminum tags
- x- Fence line
- 1958 Cad BCIP (Proportioned)
- () Record Data

SCALES:
PLAT - 1" = 400'
DETAIL - 1" = 200'

THE ORIGINAL SURVEY OF T29S R6W WAS DONE BY NATHANIEL FORD IN 1854. DONATION LAND CLAIMS AND SUBSEQUENT LOTS ARE RECORDED ON A PLAT APPROVED JUNE 30, 1863. THE 1/4 CORNER TO SECTIONS 19 & 20 AND THE CORNER TO SECTIONS 19, 20, 30 & 29 WERE SET IN THE 1904 RESURVEY BY FRED MENSCH AFTER AN UNSUCCESSFUL SEARCH FOR THE ORIGINAL CORNERS.

THE 1891 RECORD DATA ON EAST 1/2 OF LINE BETWEEN SECTIONS 18 & 19 IS FROM DCS FIELD BOOK VOLUME 1, PAGE 168 AND THE EAST 1/2 OF LINE BETWEEN SECTIONS 19 & 30 WAS RETRACED BY F C FREAR IN 1918 AT WHICH TIME HE SET THE EAST 1/16 FOR SECTIONS 19 & 30 AND THE SOUTH 1/16 FOR SECTIONS 19 & 20 DCS VOLUME 3, PAGE 39. 1914 DATA IS FROM A SUBDIVISION OF SECTION 20 DONE BY FRANK CAIN, DCS, RECORDED IN FIELD BOOK 33, PAGE 32. HANS THIELSEN, CADASTRAL SURVEYOR, COULDN'T FIND THE OLD CORNERS SO HE PROPORTIONED THE 1958 CORNERS SHOWN AS BOLD CIRCLES ON THE PLAT.

I RAN A CLOSED TRAVERSE IN SECTIONS 16, 17, 19 & 20 USING A NIKON NTD 4 TOTAL STATION. I ACHIEVED A PRECISION OF 1:55,529 AND ADJUSTED BY THE CRANDALL METHOD. I SET MONUMENTS AT THE ORIGINAL CORNER AND 1/4 CORNER LOCATIONS AS NOTED AND PROPORTIONED THE REMAINING 1/4 & 1/16 CORNERS BY STANDARD PROCEDURE BASED ON THESE AND THE EXISTING MONUMENTS. OLD FENCES AND TIMBER CUTTING LINES FOLLOW PROPERTY LINES ESTABLISHED BY THIS SURVEY EXCEPT AS NOTED ON THE PLAT.

HOWARD W JOHNSTONE P. O. BOX 1088 ROSEBURG, OREGON

REGISTERED
PROFESSIONAL
LAND SURVEYOR

Howard W. Johnstone

OREGON
MAY 13, 1989
HOWARD W. JOHNSTONE
439