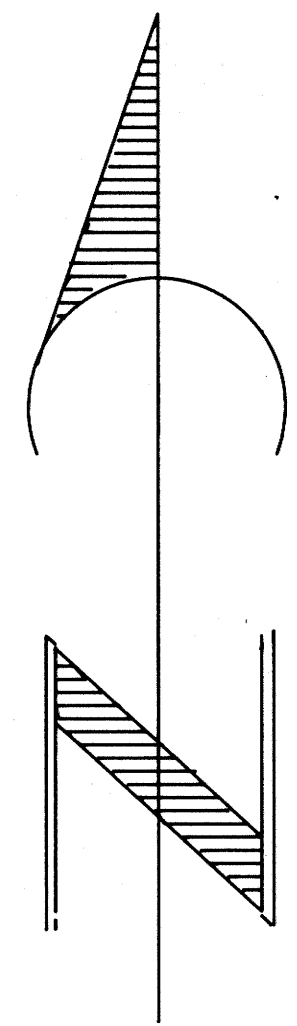


RESURVEY & SUBDIVISION OF NW 1/4 SEC 28 T30S R3W, W. M. OREGON

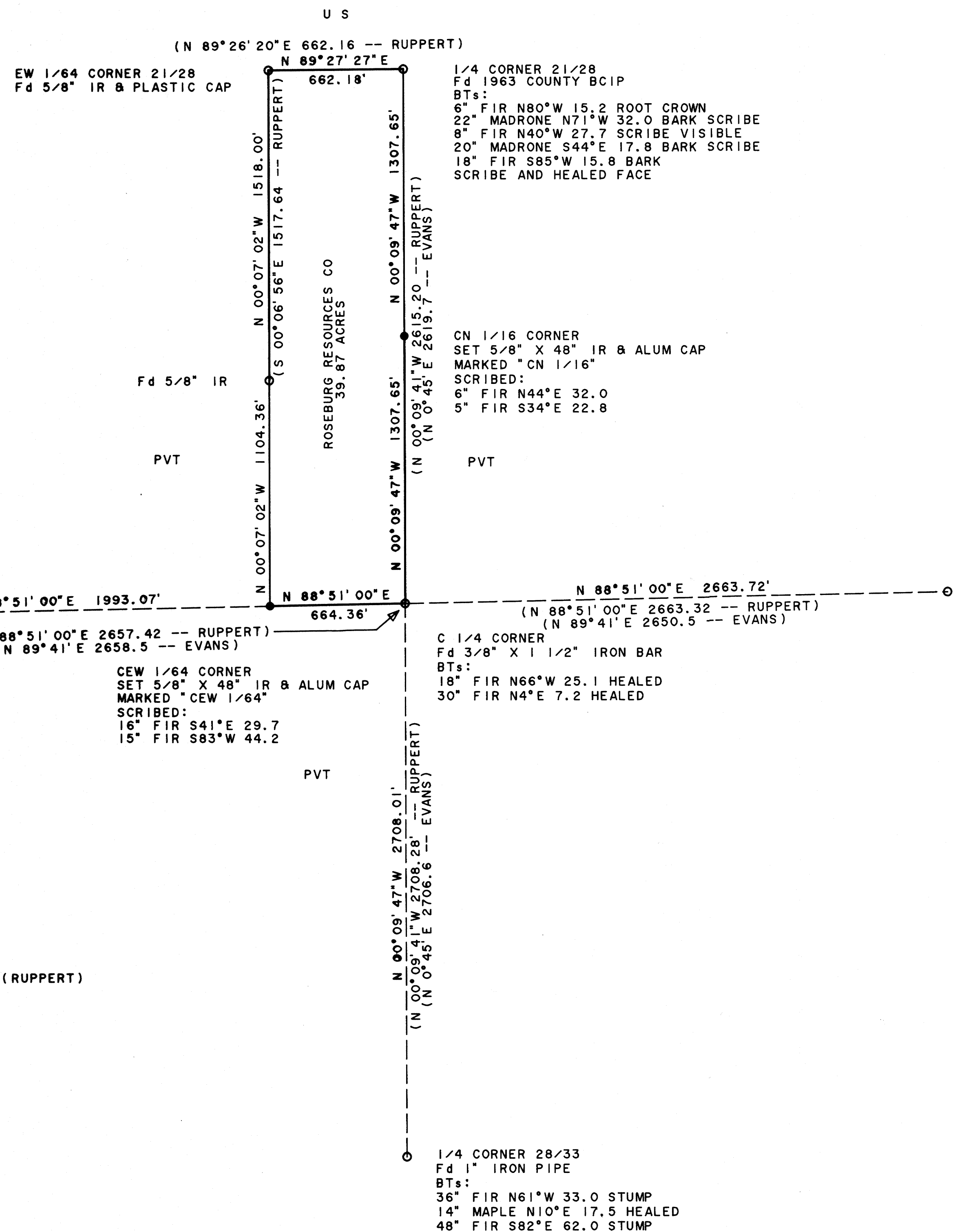
FOR ROSEBURG RESOURCES CO

SEPTEMBER 26, 1989

SCALE: 1" = 400'



BEARING BASED ON RUPPERTS E/W C/L



LEGEND

- Monument found as noted
- Set IR & alum cap marked R R Co, LS 498
- Section or property line
- - - Subdivision or calculated line
- Line referenced to aluminum tags
- () Record data

REGISTERED
PROFESSIONAL
LAND SURVEYOR

Howard W. Johnstone

OREGON
MAY 14, 1988
HOWARD W. JOHNSTONE
498

1/4 CORNER 29/28
Fd 1963 COUNTY BCIP
BTs:
56" FIR N15 1/4°E 149.2 HEALED
BCIP S83°E 27.98 USGS BM 9116
PK NAIL N89 1/2°E 23.90 IN TELEPHONE POLE
PK NAIL N12°W 9.14 IN FENCE POST

CEW 1/64 CORNER
SET 5/8" X 48" IR & ALUM CAP
MARKED "CEW 1/64"
SCRIBED:
16" FIR S41°E 29.7
15" FIR S83°W 44.2

C 1/4 CORNER
Fd 3/8" X 1 1/2" IRON BAR
BTs:
18" FIR N66°W 25.1 HEALED
30" FIR N4°E 7.2 HEALED

1/4 CORNER 28/27
Fd 1963 COUNTY BCIP
BTs:
16" FIR N36°38'W 22.6 STUMP
18" MAPLE S30 1/2°E 32.4 ROTTEN
18" MAPLE S67°W 15.0 STUMP
SCRIBED:
7" FIR S19°W 22.4
13" MAPLE N52°E 37.5
10" MAPLE N20°W 42.5

SEE ALSO CS 41/172 (EVANS), M 97-21 (RUPPERT)
AND CS 63/36 (RUPPERT).

I ran a closed traverse in Section 28 using a Nikon NTD 4 total station. I achieved a precision of 1:35595 and adjusted the traverse by the Crandall method. I set the corners by standard subdivision procedure based on the location of the existing monuments.

HOWARD W. JOHNSTONE P. O. BOX 1088 ROSEBURG, OREGON