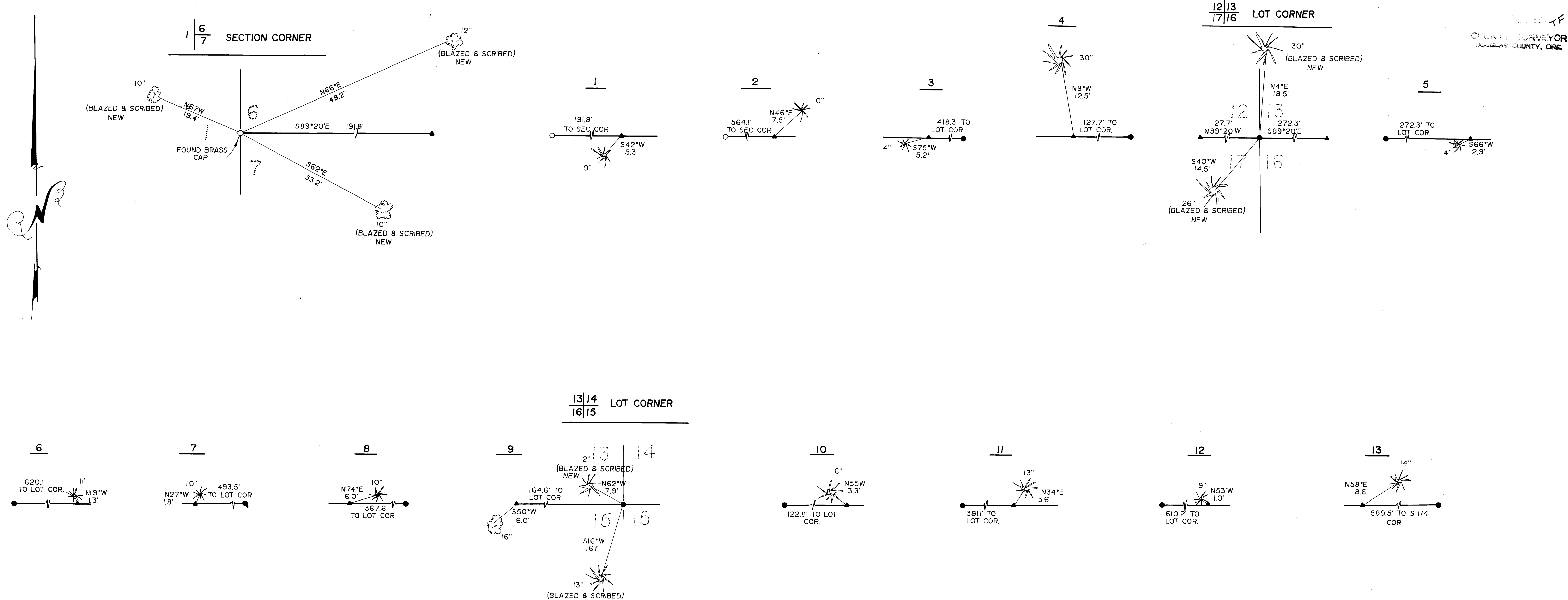
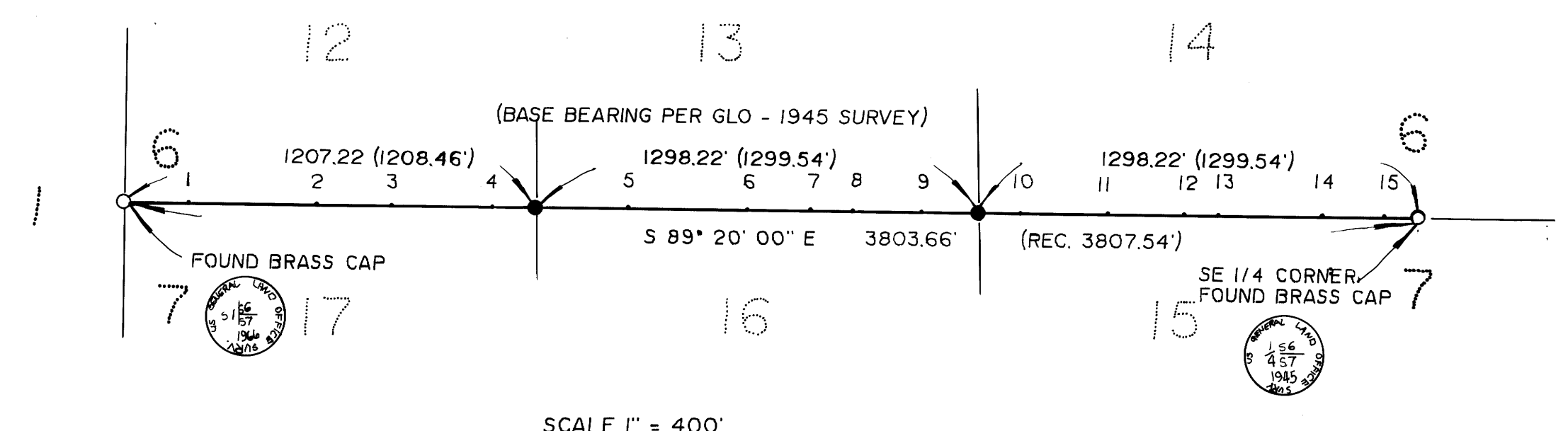


FILED TF  
COUNTY SURVEYOR  
DOUGLAS COUNTY, ORE. TF



**SURVEY FOR INTERNATIONAL PAPER**  
 LYING IN SW 1/4 SECTION 6, AND NW 1/4 SECTION 7, T21S, R8W, W. M., DOUGLAS COUNTY, OREGON.

SURVEYED BY:  
 DONALD A. BENTZ INC.  
 P. O. BOX 901  
 WINCHESTER, OR. 97495

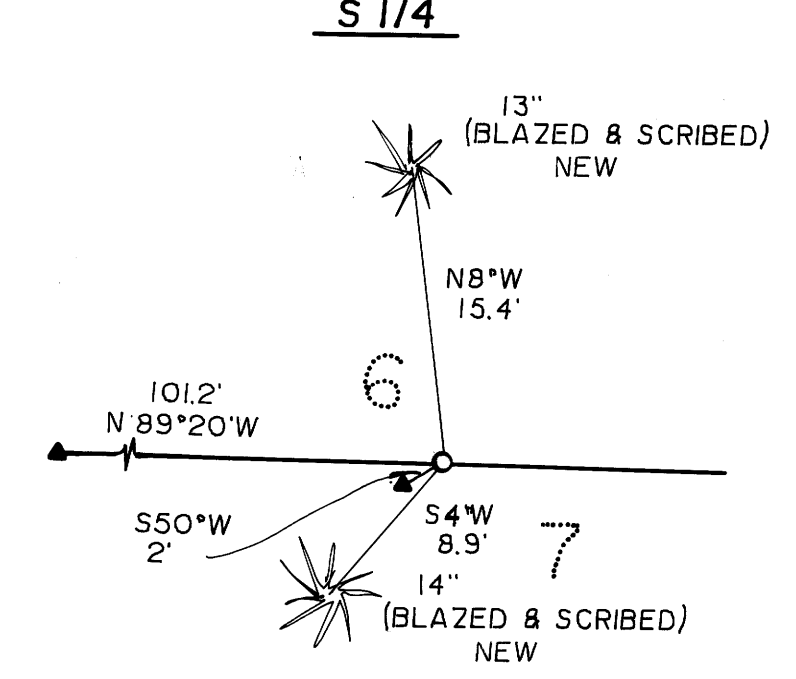


SCALE 1" = 400'

SCALE 1" = 10'  
 OCT 1989

**LEGEND**

- DOUGLAS FIR
- ALDER TREE
- ▲ SET 6" ALUMINUM POST WITH SIGN FACING I.P. PROPERTY AND BURIED MAGNETIC MARKER
- SET 5/8" x 36" IRON ROD WITH 3/4" ALUMINUM CAP STAMPED:



**NARRATIVE**  
 SURVEY WAS MADE TO MONUMENT AND POST PROPERTY LINE TO INTERNATIONAL PAPER STANDARDS. LINES WERE RUN BETWEEN EXISTING MONUMENTS AND CLOSED BACK. EQUIPMENT USED - WILD T-1 WITH RED-I EDM. FIELD CREW - M. HOLT, M. ROLD. COMPUTATIONS - R. WARE. DRAFTING - R. BRITTELL

REGISTERED PROFESSIONAL LAND SURVEYOR  
 DONALD A. BENTZ  
 JULY 12, 1980  
 OREGON  
 DONALD A. BENTZ  
 839