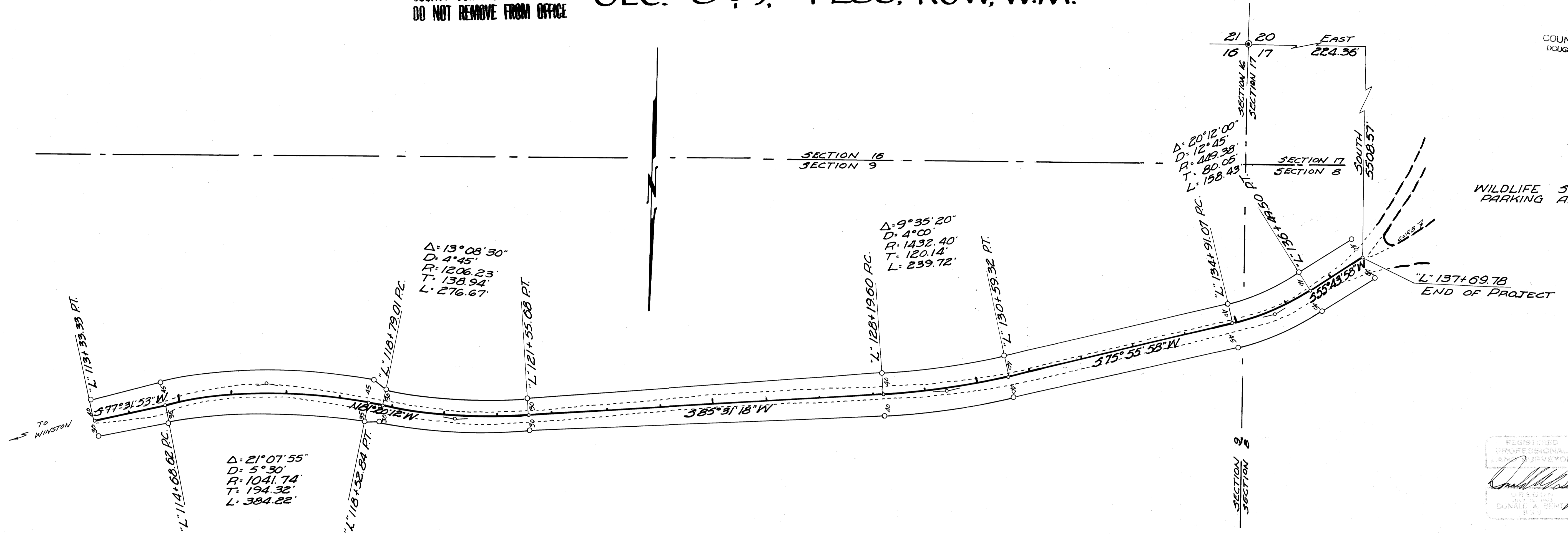


COUNTY SURVEYORS FILE DATA
DO NOT REMOVE FROM OFFICE

SEC. 8 & 9, T28S, R6W, W.M.

FILED *dh*
APR 23 1986
COUNTY SURVEYOR
DOUGLAS COUNTY, OR
RP



WILDLIFE SAFARI
PARKING AREA

L 137+69.78
END OF PROJECT

REGISTERED
PROFESSIONAL
SURVEYOR
Donald A. Bent
OREGON
NO. 1000
DONALD A. BENT
P.L.L.C.

SCALE: 1" = 100'

COUNTY SURVEYING FILE DATA
DO NOT REMOVE FROM OFFICE

BHWENG & SURVEYING, INC.
FOR
WILDLIFE SAFARI
JULY 1974 SHEET 4 of 4