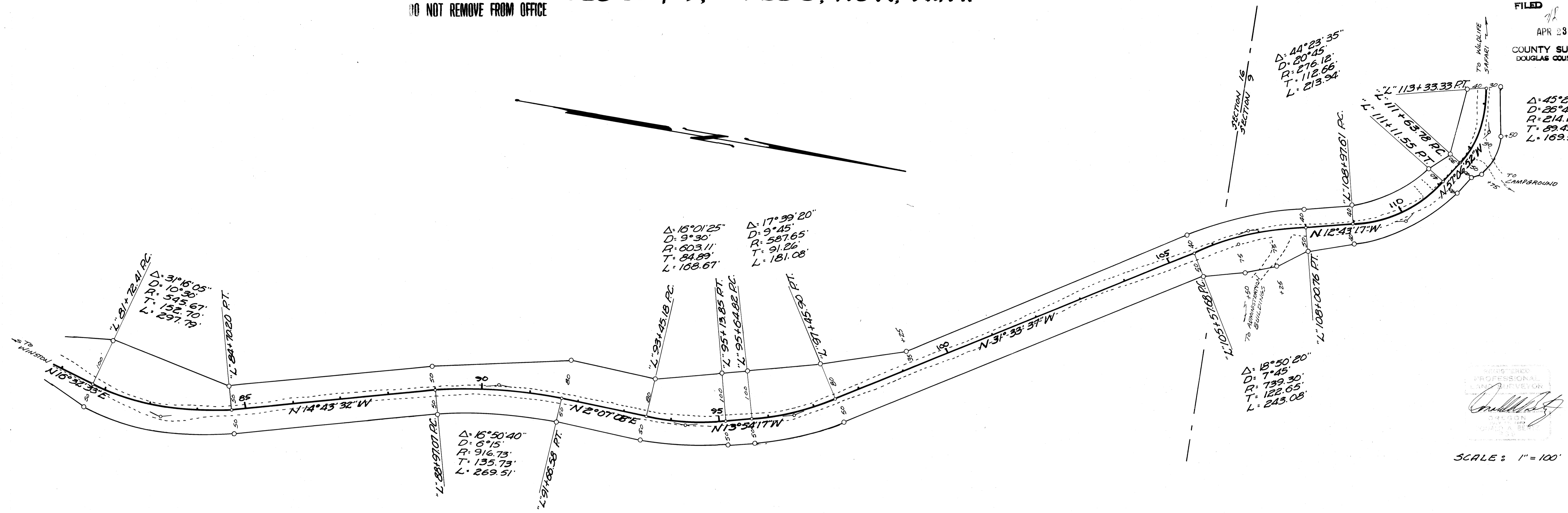


COUNTY SURVEYORS FILE DATA DO NOT REMOVE FROM OFFICE SEC 16 & 9, T28S, R6W, W.M.

FILED APR 28 1988 COUNTY SURVEYOR DOUGLAS COUNTY, OR



REGISTERED PROFESSIONAL LAND SURVEYOR [Signature]

SCALE: 1" = 100'

COUNTY SURVEYORS FILE DATA DO NOT REMOVE FROM OFFICE

BHWENG & SURVEYING, INC. FOR WILDLIFE SAFARI JULY 1974 SHEET 3 of 4