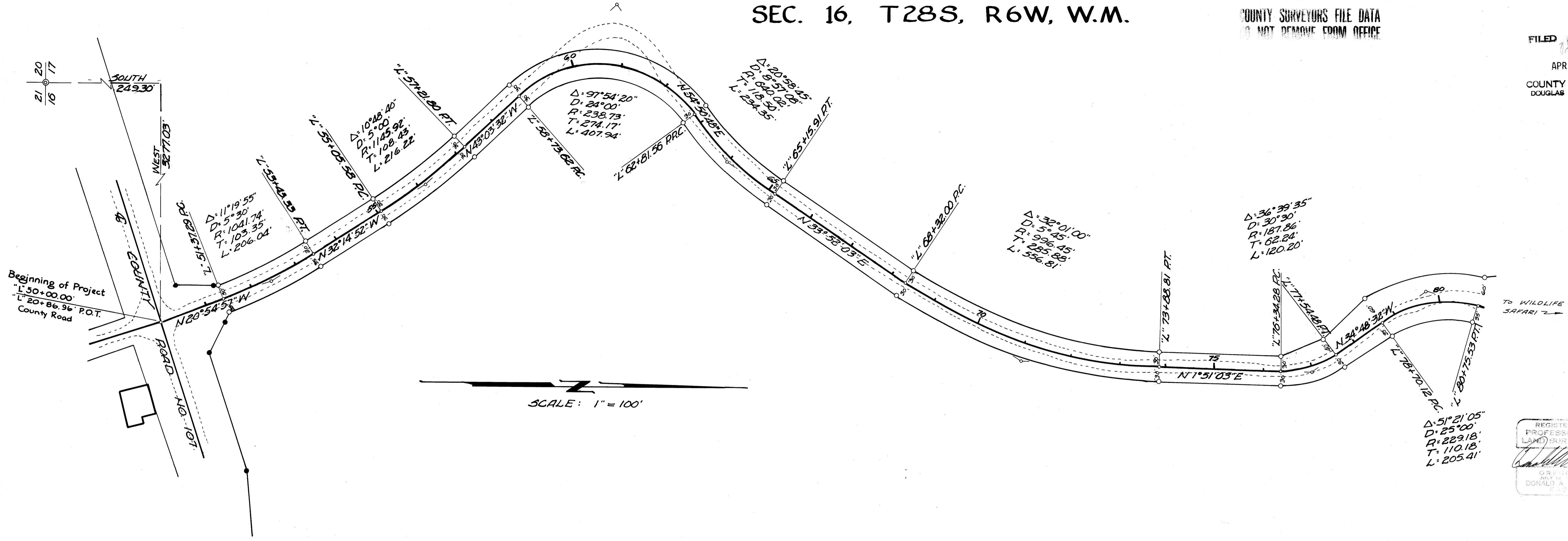


SEC. 16, T28S, R6W, W.M.

COUNTY SURVEYORS FILE DATA
DO NOT REMOVE FROM OFFICE

FILED
APR 23 1986
COUNTY SURVEYOR
DOUGLAS COUNTY, ORE.
TP



REGISTERED
PROFESSIONAL
LAND SURVEYOR
Donald A. Fife
OREGON
NO. 1000
DONALD A. FIFE
1973

COUNTY SURVEYORS FILE DATA
DO NOT REMOVE FROM OFFICE

BHW ENGINEERING, INC.
FOR
WILDLIFE SAFARI
JULY 1974 SHEET 2 of 4