

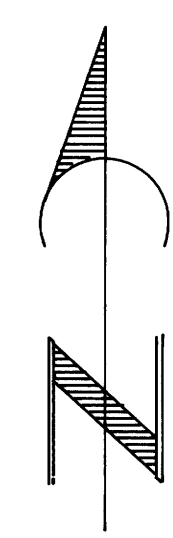
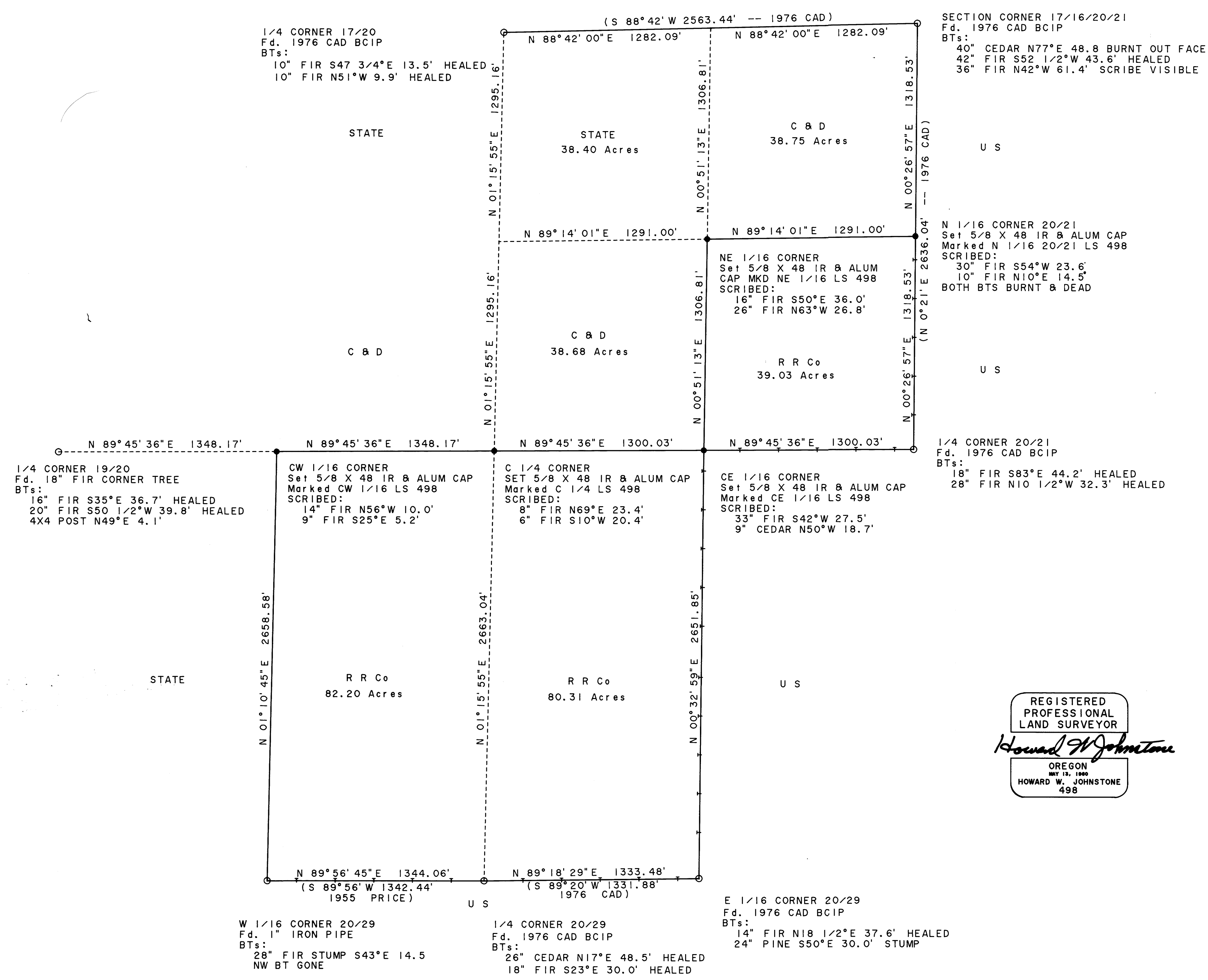
RESURVEY AND SUBDIVISION OF NE 1/4 AND S 1/2 SECTION 20 T 32 S, R 6 W, W. M., OREGON

FOR ROSEBURG RESOURCES CO

JUNE 28, 1989

SCALE: 1" = 400'

FILED
JUL 12 1989
COUNTY SURVEYOR
DOUGLAS COUNTY, ORE.



Bearing based on 1976 Cadastral resurvey of East half of line between sections 17 & 20

LEGEND

- O Monument found as noted
- Set IR & alum cap marked R R Co, LS 498
- Section or property line
- - - Subdivision or calculated line
- Line referenced to aluminum tags
- () Record data

REGISTERED
PROFESSIONAL
LAND SURVEYOR
Howard W. Johnstone
OREGON
REG. NO. 498
HOWARD W. JOHNSTONE
498

I ran a closed traverse in Section 20 using a Nikon NTD 4 total station. I achieved a precision of 1:88555 and adjusted the traverse by the Least Squares method. I set the corners by standard subdivision procedure based on the location of the existing monuments.

Howard W. Johnstone P. O. Box 1088 Roseburg, Oregon