

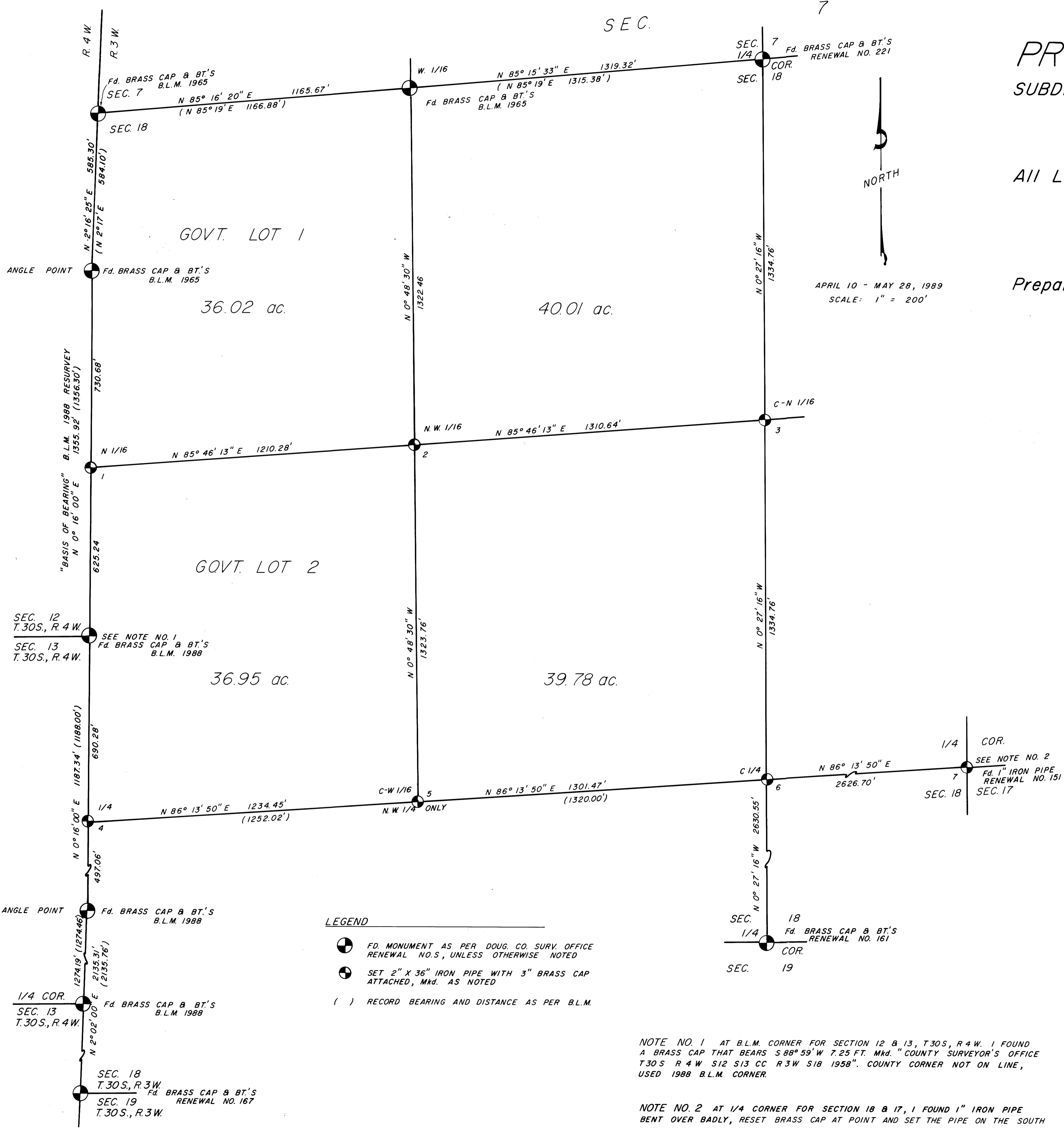
FILED
JUN 12 1989 TF
COUNTY SURVEYOR
DOUGLAS COUNTY, ORE
TF

PROPERTY SURVEY WITH SUBDIVISION OF THE N. W. 1/4, SECTION 18

All Located in: SECTION 18, TOWNSHIP 30 SOUTH, RANGE 3 WEST,
WILLAMETTE MERIDIAN, DOUGLAS COUNTY, OREGON.

Prepared for: C & D Lumber Co.
Pruner Road
Riddle, Oregon 97469

APRIL 10 - MAY 28, 1989
SCALE: 1" = 200'



- SET BRASS CAP Mkd. "LS 1261 N 1/16 S 18 1989"
FROM WHICH A 7" D. FIR BEARS S 53-1/2° E 59.3 FT. Mkd. "N 1/16 S 18 BT"
4" D. FIR BEARS N 13° 20' E 11.4 FT. Mkd. "X BT"
4" D. FIR BEARS N 71° W 11.1 FT. Mkd. "X BT"
- SET BRASS CAP Mkd. "LS 1261 S 18 NW 1/16 1989"
FROM WHICH A 12" D. FIR BEARS S 80° E 12.2 FT. Mkd. "NW 1/16 S 18 BT"
10" D. FIR BEARS S 19-1/2° W 12.9 FT. Mkd. "NW 1/16 S 18 BT"
- SET BRASS CAP Mkd. "LS 1261 S 18 C-N 1/16 1989"
FROM WHICH A 8" D. FIR BEARS N 35° W 14.7 FT. Mkd. "C-N 1/16 S 18 BT"
12" D. FIR BEARS EAST 25.4 FT. Mkd. "C-N 1/16 S 18 BT"
- SET BRASS CAP Mkd. "LS 1261 T 30S R 4W 1/4 S 18 R 3W 1989"
FROM WHICH A 15" W OAK BEARS N 78° E 43.9 FT. Mkd. "1/4 S 18 BT"
24" D. FIR BEARS S 22° E 126.1 FT. Mkd. "1/4 S 18 BT"
- SET BRASS CAP Mkd. "LS 1261 W 1/16 S 18 C-C 1989"
FROM WHICH A 1-1/4" DRILL STEEL BEARS N 86° 13' 50" E 78.4 FT. Mkd. "BO LS 1261" ON TOP
1" IRON PIPE BEARS N 0° 48' 30" W 200.0 FT. Mkd. "BO LS 1261" ON TOP SIDE
- SET BRASS CAP Mkd. "LS 1261 C 1/4 S 18 T 30S R 3W 1989"
FROM WHICH A 15" W OAK BEARS N 82-1/2° E 175.2 FT. Mkd. "C 1/4 S 18 BT"
16" D. FIR BEARS S 0° 30' W 235.7 FT. Mkd. "C 1/4 S 18 BT"
- SET BRASS CAP Mkd. "LS 1261 1/4 T 30S S 18 S 17 R 3W 1989"
FROM WHICH A 12" D. FIR BEARS N 35-1/2° W 18.7 FT. Mkd. "1/4 S 18 BT"
14" D. FIR BEARS N 63-1/2° E 27.1 FT. Mkd. "1/4 S 17 BT"
FENCE CORNER BEARS SOUTH 17.5 FT.

NARRATIVE: PURPOSE OF THE SURVEY WAS TO LOCATE THE PROPERTY CORNERS OF LANDS OWNED BY C & D LUMBER COMPANY. FIELD INVESTIGATION LOCATED SAID FOUND CORNERS.

THE SURVEY BEGAN WITH THE LOCATION OF THE W 1/4 CORNER TO SECTION 18. THIS WAS DONE BY GOING MID-WAY (CARDINAL DISTANCE) FROM THE RESPECTED CORNERS. THE N 1/16 ALONG THIS LINE WAS ALSO ESTABLISHED IN THIS WAY. I THEN RAN EASTERLY FROM SAID W 1/4 TO THE E 1/4 OF THE SECTION AND SOUTHERLY FROM THE N 1/4 TO THE S 1/4. WHERE THE TWO LINES CROSSED, I SET THE C 1/4. THE C-N 1/16 WAS PLACED MID-WAY FROM THE N 1/4 CORNER TO THE C 1/4 CORNER. I THEN RUN S 86° 13' 50" W FROM THE C 1/4 AND SET THE C-W 1/16 AT PROPORTIONATE DISTANCE TO THE G.L.O. DISTANCE. NOTE: SECTION 18 WAS ORIGINALLY SURVEYED IN TWO HALVES, NORTH AND SOUTH, THEREFORE THE C-W 1/16 COMMON IS FOR THE NW 1/4 OF SECTION 18 ONLY. I THEN RUN N 0° 48' 30" W FROM THE C-W 1/16 TO THE W 1/16 COMMON TO SECTION 7 & 18 AND RUN FROM THE N 1/16 TO THE C-N 1/16. WHERE THE TWO LINES CROSSED, I SET THE N W 1/16.

MOST RECENT SURVEY IN THE AREA WAS A 1988 RESURVEY OF SECTION 13, T 30S, R 4 W, BY THE B.L.M. AND THE EAST SIDE OF THIS SURVEY WAS USED AS MY "BASIS OF BEARING".

LEGEND

- FD. MONUMENT AS PER DOUG. CO. SURV. OFFICE RENEWAL "NO.S", UNLESS OTHERWISE NOTED
- SET 2" X 3/8" IRON PIPE WITH 3" BRASS CAP ATTACHED, Mkd. AS NOTED
- () RECORD BEARING AND DISTANCE AS PER B.L.M.

NOTE NO. 1 AT B.L.M. CORNER FOR SECTION 12 & 13, T 30S, R 4 W. I FOUND A BRASS CAP THAT BEARS S 88° 59' W 7.25 FT. Mkd. "COUNTY SURVEYOR'S OFFICE T 30S R 4 W S 12 S 13 CC R 3W S 18 1958". COUNTY CORNER NOT ON LINE, USED 1988 B.L.M. CORNER.

NOTE NO. 2 AT 1/4 CORNER FOR SECTION 18 & 17, I FOUND 1" IRON PIPE BENT OVER BADLY, RESET BRASS CAP AT POINT AND SET THE PIPE ON THE SOUTH SIDE OF CAP. ORIGINAL BEARING TREES HAVE BEEN DESTROYED. MARKED TWO NEW BEARING TREES.

JOHN H. MARKHAM JR.
P.O. BOX 802
MYRTLE CREEK, OR 97457
ph. 863-4590
DRAWN BY: RAYMOND BROWN
ph. 839-6185

