

75-1070

COUNTY SURVEYORS FILE DATA
DO NOT REMOVE FROM OFFICE

FILED
APR 28 1989
COUNTY SURVEYOR
DOUGLAS COUNTY, ORE

LANE COUNTY

DOUGLAS COUNTY

SURVEY FOR DOUGLAS COUNTY LAND DEPARTMENT

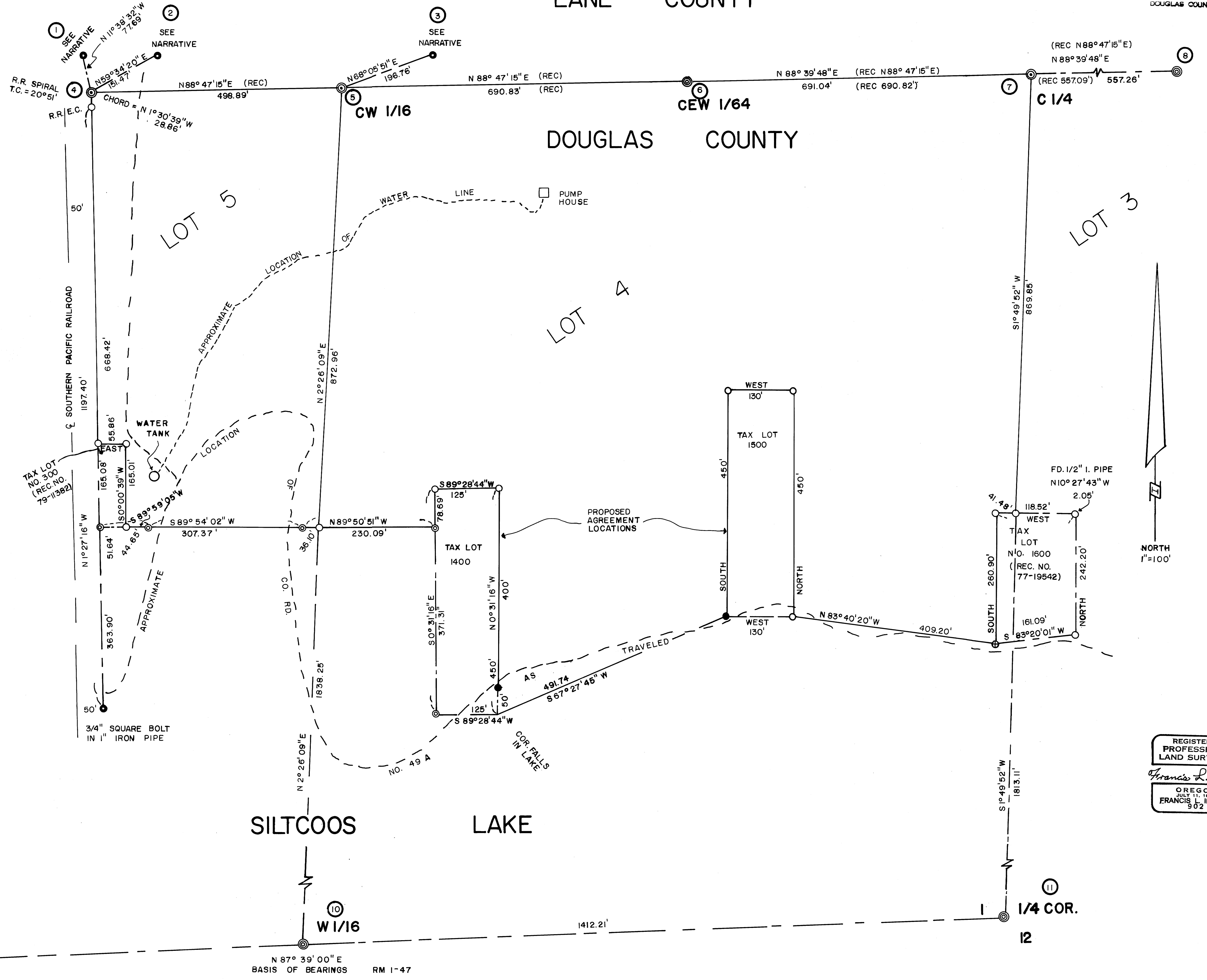
IN SOUTH 1/2 SEC 1, T20S, R12W, W.M.

SURVEYED BY FRITZ INGRAM, COUNTY SURVEYOR
MARCH 1989

DRAFTED BY HILARY SIMMONS

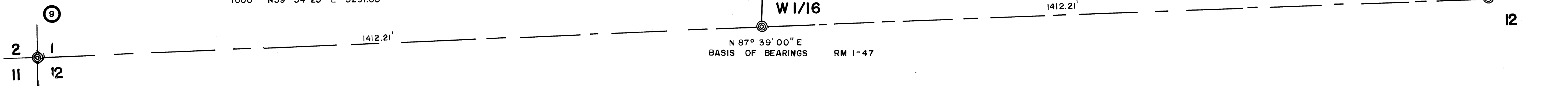
LEGEND

- SET 5/8" x 60" IRON ROD W/ALUMINUM CAP STAMPED "DOUGLAS CO. SURVEYOR"
- ⊕ SET 5/8" x 30" IRON ROD W/ALUMINUM CAP STAMPED "DOUGLAS CO. SURVEYOR"
- SET BOAT SPIKE IN A.C. STAMPED "DCSO 1989"
- ⊙ SET BRASS CAP AS DESCRIBED IN NARRATIVE
- ⊚ FOUND BRASS CAP AS DESCRIBED IN NARRATIVE
- ⊛ FOUND 3/4" IRON ROD
- FOUND AS NOTED
- (REC) REFERS TO M88-13
- ① CORNER NUMBER CORRESPONDING TO NARRATIVE.



REGISTERED
PROFESSIONAL
LAND SURVEYOR
Francis L. Ingram
OREGON
JULY 11, 1988
FRANCIS L. INGRAM
902

FROM	2 1	TO: SW COR. TAX LOT 1400	N 48° 31' 37" E	2299.05'
	11 12	" " " "	1500 N 53° 21' 22" E	2868.77'
		" " " "	1600 N 59° 34' 25" E	3291.85'



COUNTY SURVEYORS FILE DATA
DO NOT REMOVE FROM OFFICE

U.S. FILE 62/64
M/101-51

M 101-51

FILED



APR 28 1989

NARRATIVE TO ACCOMPANY
SURVEY FOR
DOUGLAS COUNTY LAND DEPARTMENT
IN SOUTH $\frac{1}{2}$ OF SECTION 1, T20S, R12W, W.M.
MARCH 1989

COUNTY SURVEYOR
DOUGLAS COUNTY, ORE.

The purpose of this survey was to define the boundaries of Douglas County Land Department property (Lot 4 of Section 1, less exceptions) and of Douglas County Parks Department property (Lot 5 of Section 1, less exceptions).

Basis of bearing was the south line of Section 1 as shown on Surveys RM 1-47 and M 88-13.

From Survey M 88-13, three monuments (corners 1,2,&3) shown by RM 1-47 to be on the county line were tied. Also from Survey M 88-13, monuments shown as set at the CW 1/16, CEW 1/64, C 1/4 and a point on the north line of Lot 3 were tied. Also from Survey M 88-13, monuments at the SW corner of Section 1, the south 1/4 corner of Section 1 and the W 1/16 corner between Sections 1 and 12 were tied.

All monuments tied from Survey M 88-13 agreed with that map except the C 1/4 and the CW 1/16 which apparently were set in error. I set a new monument at the C 1/4 by proportioning between the CEW 1/64 and the monument found on the north line of Lot 3 (corner #8), using M 88-13 as record. I set a new monument at the CW 1/16 at bearing and distance from the CEW 1/64 as per M 88-13.

Holding the bearing from the CEW 1/64 as per M 88-13, I intersected the County Line with the easterly right-of-way line of the Southern Pacific Railroad (corner #4). The bearing of the railroad was determined by found monuments to the south. The intersection was made on a spiral curve as per the S.P.R.R. maps. Stationing of the R.R.E.C. was determined from those same S.P.R.R. maps which showed stationing on the monuments found to the south.

The boundary between Lot 4 and Lot 5 was determined by inversing between the CW 1/16 and the W 1/16 corners between Sections 1 and 12. An intersection was made with the line connecting found monuments to determine the SE corner of the Parks Department property.

The boundary between Lot 3 and Lot 4 was determined by inversing between the C 1/4 and the S 1/4 corners. Tax Lot No. 1600 was monumented according to Deed Recorder's No. 77-19542. A monument was set at the intersection of the line between Lots 3 and 4 with the north line of Tax Lot No. 1600.

The locations for Tax Lots 1400 and 1500 according to Deed Records 72-11045 and 83-03699 did not fit occupancy. Using parcel dimensions from those records, new descriptions were determined as shown and the Douglas County Land Department is pursuing the matter with the private owners of those Tax Lots.

C.S. File No. 62/64

FILED

jh
APR 28 1989

COUNTY SURVEYOR
DOUGLAS COUNTY, ORE.

Tax Lot No. 300 was monumented using found monuments and Deed Recorder's No. 79-11382. Adjustments to some dimensions were made to insure Tax Lot No. 300 had at least its full acreage.

Attached are numbered Corner Reports showing additional information not detailed on the map.

Field equipment included a Kern DKM2-AE Theodolite, a Leitz Red-1 Distance Measuring Device, and steel tapes. Field personnel included Randall Smith, Stephen Flause, Terrie Franssen, and Linda Rigutto. Office personnel included Hilary Simmons, Randall Smith, Stephen Flause, Linda Rigutto, Larry Monrean, and Francis Ingram.

REGISTERED
PROFESSIONAL
LAND SURVEYOR

Francis L. Ingram

OREGON
JULY 11, 1969
FRANCIS L. INGRAM
902

C.S. File No. 62/64

CORNER #1

GOVERNMENT CORNER RESTORATION FORM

FILED

Township 20S Range 12W Sec. 1 County DOUGLAS

State OREGON Date JUNE 20, 1988 No. _____

APR 28 1989

Corner Designation

OLD MOST WESTERLY COUNTYLINE MARKER
E-W CENTERLINE OF SEC. 1
ACCORDING TO RM 1-47

COUNTY SURVEYOR
DOUGLAS COUNTY, ORE.

- Condition Report Only
- Not Found
- Renewed
- Unrecorded
- Surveyed In
- Referenced Out

Previous Renewals NONE

Monument(s) Found: (Condition and Source)

A 2 1/2 INCH BRASS CAP (MARKED AS AT RIGHT) ON A 1 1/2 INCH O.D. IRON PIPE FIRMLY SET AND PROTRUDING APPROXIMATELY 6 INCHES ABOVE GROUND

MONUMENT SET BY MILO GODFREY IN SURVEY FILED AT DC SO AS RM 1-47

DOUGLAS COUNTY SURVEYORS OFFICE

LANE COUNTY

DOUGLAS COUNTY

1964

Accessories Found:

A 6x6 INCH WOODEN COUNTY LINE MARKER POST PROTRUDING APPROXIMATELY 7 FEET FROM GROUND WITH NW SIDE LETTERED "LANE COUNTY" AND SW SIDE LETTERED "DOUGLAS COUNTY" BEARS S66°W, 0.9 FEET. A 7 INCH DIAM. 3 INCH TALL STUB OF A POWER POLE (MARKED "STDS -60 SPEC 8 7 25" ON CUT DOWN PORTION) BEARS N3°E, 48.2 FEET DISTANT (RECORD N3°W, 48.2 FT.)

RENEWAL

Monument Set (Procedure and Description)

Monument Detail

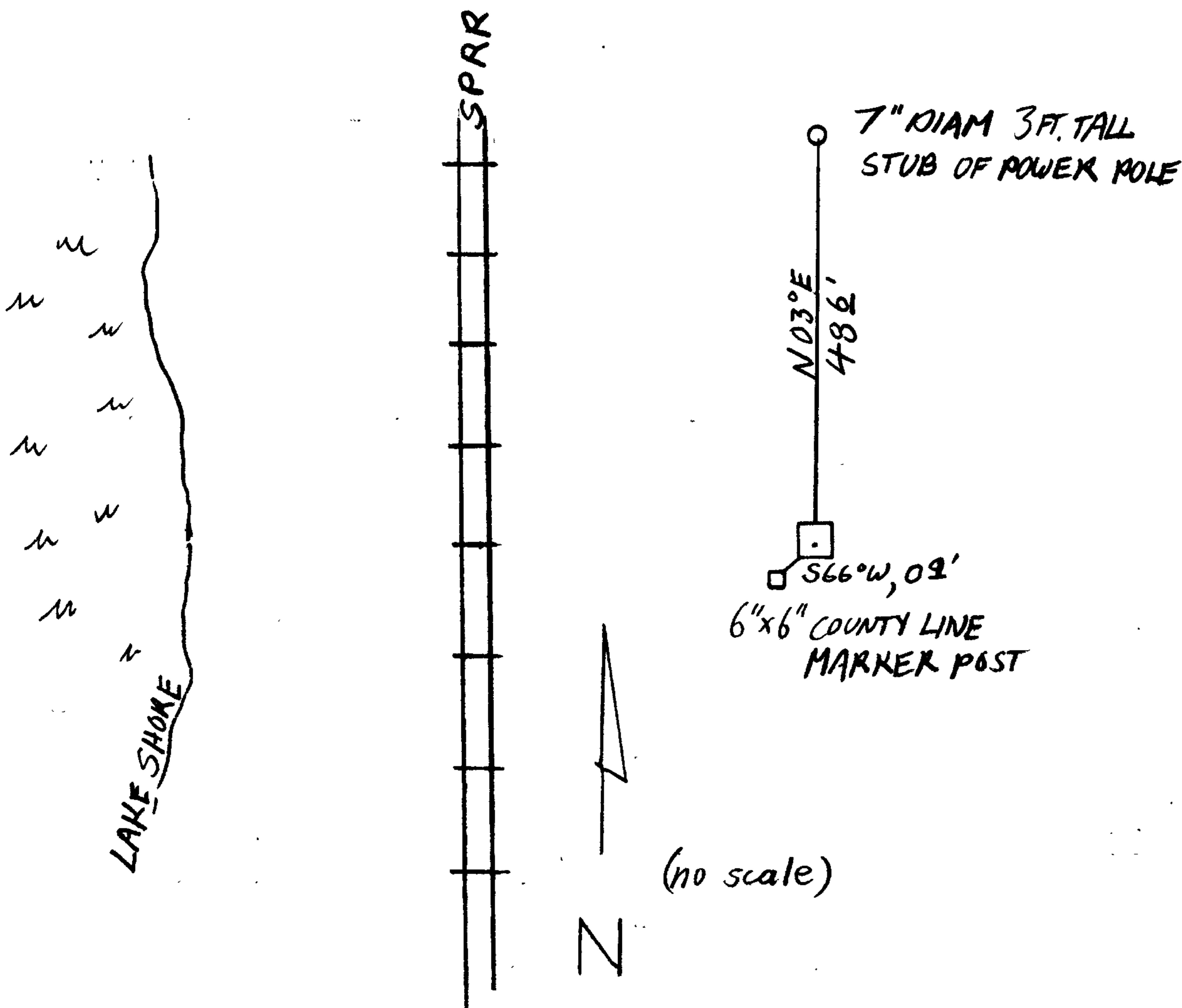
A LATER SURVEY AND BLM OPINION SHOW THIS MONUMENT TO BE IN ERROR. TO SAVE CONFUSION WE REMOVE BRASS CAP FROM PIPE AND PLACE A 1 1/4 INCH DIAMETER PLASTIC CAP MARKED "DOUG. CO. SURVEYOR" IN TOP OF PIPE.

NA

New Accessories

NONE

Sketch of Monument, Accessories, and General Area



Location & Comments

JUST NORTH OF ADA RESORT ALONG SP RAILROAD TRACKS

Comp. Declin. 18 1/2 E
Agency DCSD
Party Chief RANPALL W SMITH
Notekeeper [Signature]
Witnesses STEPHEN J FLOUSE

Address

Surveyor's Seal

REGISTERED PROFESSIONAL LAND SURVEYOR

[Signature]

OREGON JULY 13, 1979 LARRY E. MONREAN #1830

CORNER #2

GOVERNMENT CORNER RESTORATION FORM

FILED

Township 20S Range 12W Sec. 1 County DOUGLAS

State OR Date 6/20/88 No. _____

APR 28 1989

Corner Designation

LANE COUNTY SURVEYOR
LANE COUNTY, OREGON

OLD COUNTY LINE
MARKER
ALONG EAST SIDE
OF COUNTY ROAD
According
to RML-47

- Condition Report Only
- Not Found
- Renewed
- Unrecorded
- Surveyed In
- Referenced Out

Previous Renewals NONE

MONUMENT DETAIL

Monument(s) Found: (Condition and Source)

A 2 1/2" DIA. DCSD BRASS CAP ON A
1 1/4" O.D. IRON PIPE PROTRUDING
6 IN ABOVE GROUND SET IN
MILG GORFREY SURVEY (CRM 1-47)

DOUG COUNTY SURVEYORS OFFICE

LANE
COUNTY

DOUGLAS
COUNTY

1964

Accessories Found:

A 9" NOW A 17" DBH DOUG. FIR WITH A FULLY HEALED DOUBLE BLAZE
BEARS S13°W, 15⁸ FT (RECORD S13°E, 15⁸ FT).

A 32" NOW A 41" D.B.H. DOUG. FIR WITH A FULLY HEALED SINGLE BLAZE
BEARS N 74°E, 19⁹ FT (RECORD N 74°W, 19⁹')

RENEWAL

Monument Set (Procedure and Description)

Monument Detail

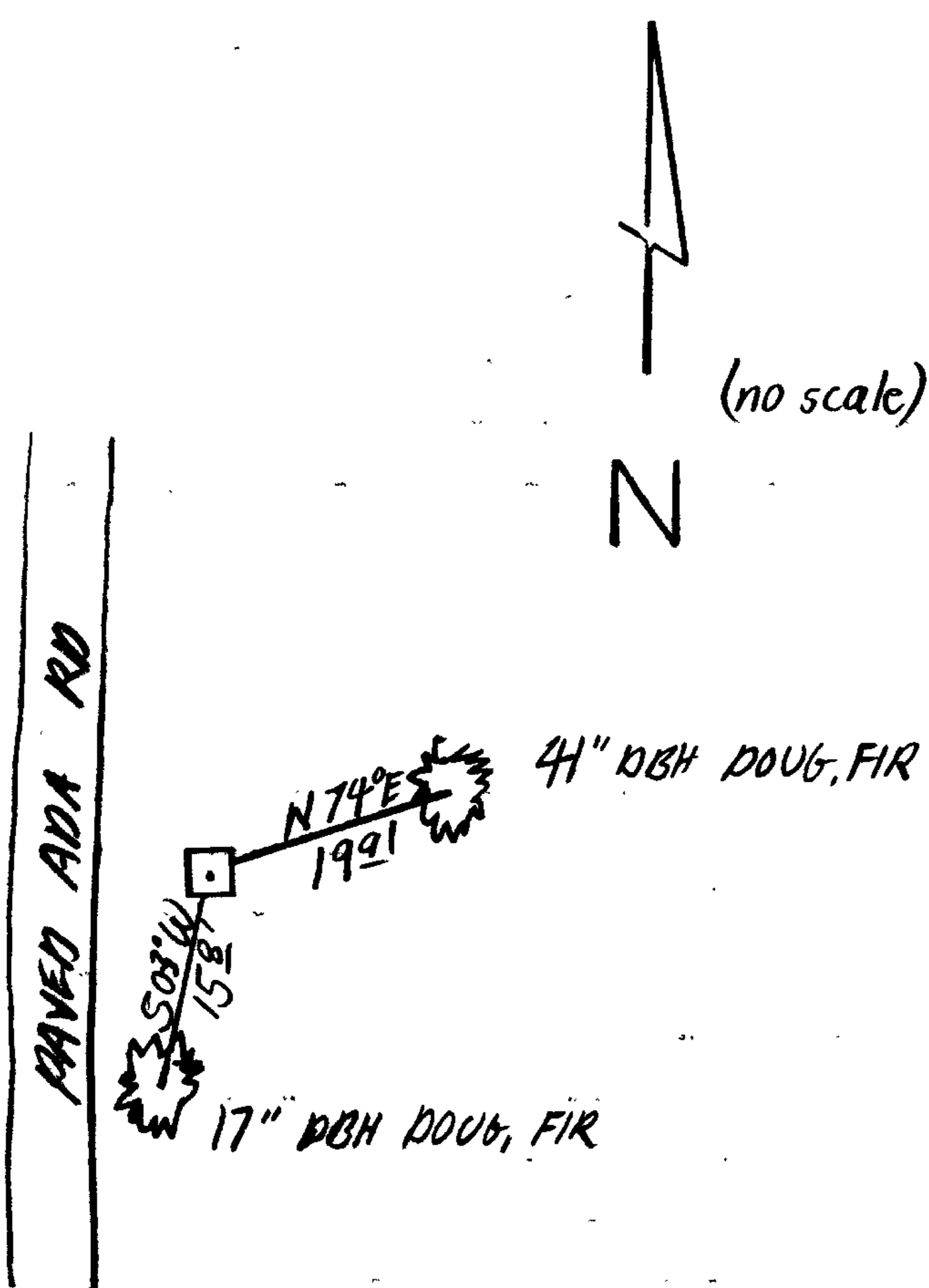
BRASS CAP ON DCSD 1964 BC/11P
 IS SAILED OFF, REMAINING 1.2 FEET
 IN PLACE AND A PLASTIC CAP MARKED "DOUG. W. SURVEYOR"
 IS SET IN TOP OF PIPE.
 1964 DCSD SURVEY BY MILO E. GODFREY
 (RM1-47) SUPERSEDED IN 1981 BY PERRY
 G. FOX SURVEY (M88-3). BLM OPINION
 SHOW THIS MONUMENT TO BE IN ERROR. TO
 SAVE CONFUSION WE REMOVE CAP FROM
 PIPE.

N/A

New Accessories

NONE

Sketch of Monument, Accessories, and General Area



Location & Comments

Comp. Declin. 18 1/2° E
 Agency DCSD
 Party Chief RANDALL W. SMITH
 Notekeeper Stephen John Flause
 Witnesses STEPHEN J. FLAUSE

Address

Surveyor's Seal

REGISTERED
 PROFESSIONAL
 LAND SURVEYOR

Larry E. Monrean

OREGON
 JULY 13, 1979
 LARRY E. MONREAN
 #1830

CORNER #3

GOVERNMENT CORNER RESTORATION FORM

FILED

Township 20S Range 12W Sec. 1 County DOUGLAS

State OREGON Date JULY 26 1988 No. _____

APR 28 1989

Corner Designation
(GODFREY)

COUNTY SURVEYOR
DOUGLAS COUNTY, ORE.

- Condition Report Only
- Not Found
- Renewed
- Unrecorded
- Surveyed In
- Referenced Out

OLD CW 1/16 ACCORDING TO RM 1-47

Previous Renewals NONE, SEE RM 1-47

Monument(s) Found: (Condition and Source)

20" NOW 26" DIA. SPRUCE WITH FULLY HEALED SINGLE BLAZES ON THE NORTH, SOUTH AND EAST SIDES OF TREE (PER GODFREY SURVEY RM 1-47)

MONUMENT DETAIL

N/A

Accessories Found:

PER RM 1-47

20" NOW 29" DIA. SPRUCE WITH A FULLY HEALED SINGLE BLAZE BEARS S1°W, 13.0 FT (REC. S1°E, 13.0 FT).

18" NOW 23" DIA. SPRUCE WITH A PARTIALLY HEALED DOUBLE BLAZE, NO SCRIBING VISIBLE, BEARS N64°W, 37.5 FT (REC. N64°E, 37.5 FT).

C.S. File No. 62/64

RENEWAL

Monument Set (Procedure and Description)

Monument Detail

NONE

N/A

New Accessories

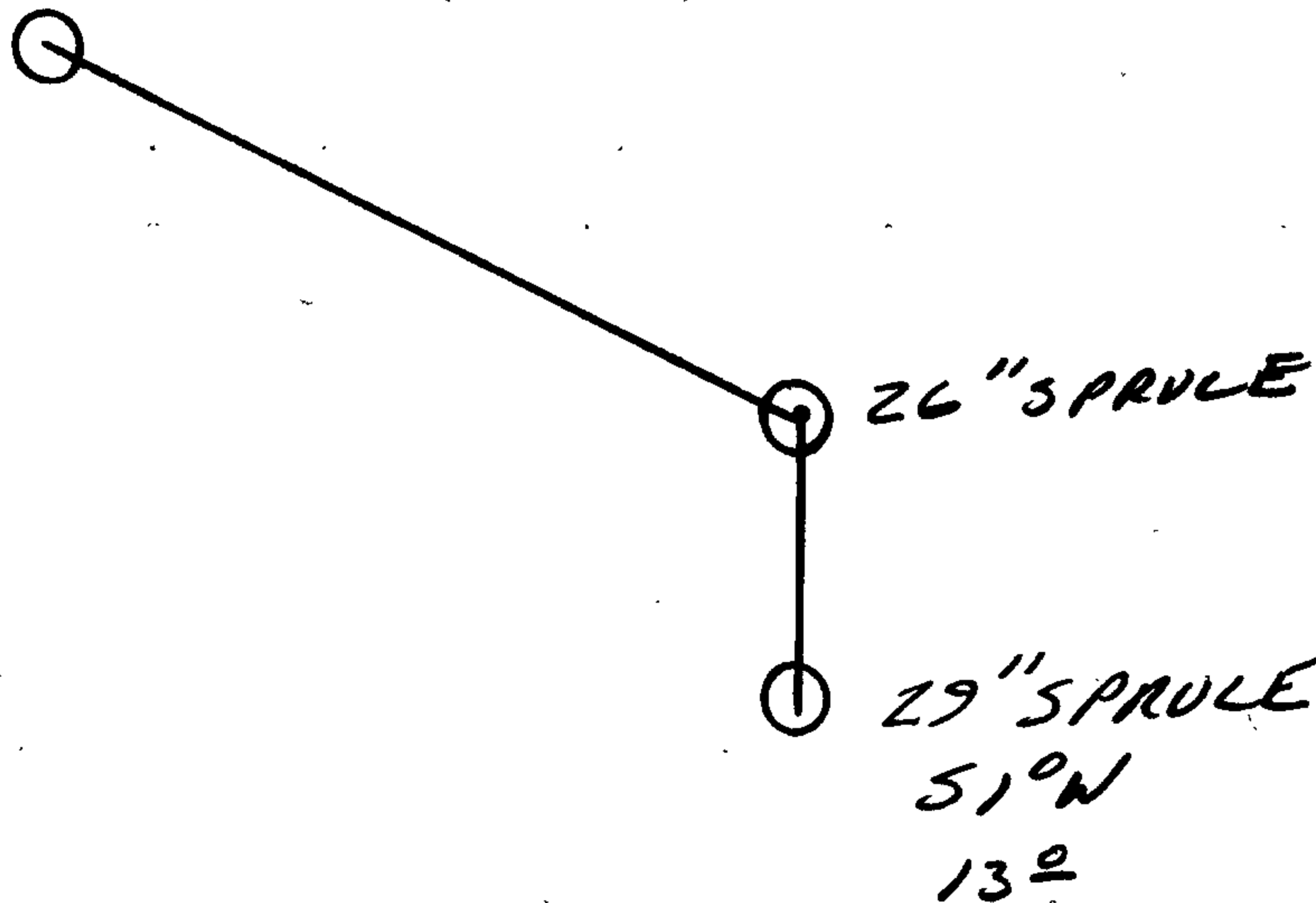
NONE

Sketch of Monument, Accessories, and General Area

Location & Comments

○ PER RM 1-47

23" SPRUCE N64°W, 37.5'



Comp. Declin. 18 1/2° E
Agency DCSO
Party Chief RANDALL W SMITH
Notekeeper Randall W Smith
Witnesses STEPHEN J FLAISE

Address _____

Surveyor's Seal

REGISTERED
PROFESSIONAL
LAND SURVEYOR

Larry E. Monrean

OREGON
JULY 13, 1979
LARRY E. MONREAN
#1830

RENEWAL

Monument Set (Procedure and Description)

A 2 3/8" DIAM. BRASS CAP MARKED AS AT RIGHT ON A 1 3/8" OD. X 32" LONG GALVANIZED IRON PIPE IS FIRMLY SET PROTRUDING APPROX. 5" ABOVE GROUND.

Monument Detail

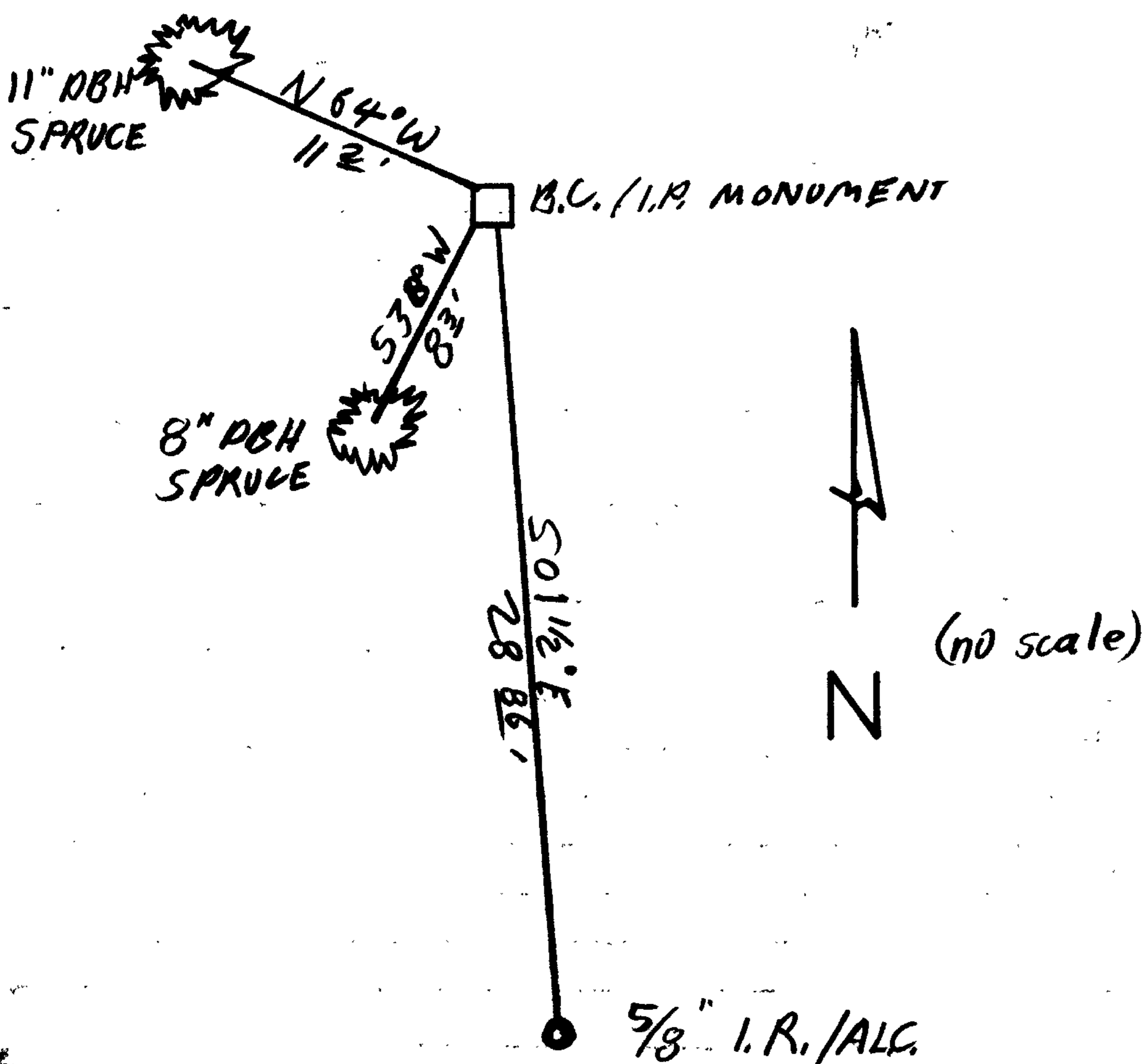
DOUGLAS COUNTY SURVEYORS

T 20 S
R 12 W
C ——— C
S 1
1989
OFFICE

New Accessories

- 11" DBH SPRUCE D. BLAZED "S1 CS BT" BEARS N 64° W , 11 2/3 FT.
- 8" DBH SPRUCE D. BLAZED "S1 CS BT" BEARS S 38° W , 8 3/4 FT.
- 5/8" I.R./ALC. S 1 1/2° E , 28 86 FT.

Sketch of Monument, Accessories, and General Area



Location & Comments

MONUMENT IS LOCATED ON TIMBERED BENCH BETWEEN ANA PARK ROAD AND SPRA TRACKS. MONUMENT LIES NEARER RAILROAD TRACKS

Comp. Declin. 18 1/2° E
Agency DCSD
Party Chief R.W. SMITH
Notekeeper ST. FLAUSE
Witnesses Stephen John Flouse

Address

Surveyor's Seal

REGISTERED
PROFESSIONAL
LAND SURVEYOR

Larry E. Monrean

OREGON
JULY 13, 1979
LARRY E. MONREAN
#1830

CORNER #5

GOVERNMENT CORNER RESTORATION FORM

FILED

Township 20S Range 12W Sec. 1

County DOUGLAS

APR 28 1989

State OR

Date JULY 26, 1988

No. _____

COUNTY SURVEYOR
DOUGLAS COUNTY, ORE.

Corner Designation

CW 1/16

- Condition Report Only
- Not Found
- Renewed
- Unrecorded
- Surveyed In
- Referenced Out

Previous Renewals M 88-13

Monument(s) Found: (Condition and Source)

A 2 1/2" DIA. BRASS CAP ON A 2 1/4"
O. D. I.P. PROTRUDES 8 IN. ABOVE
GROUND.

MONUMENT DETAIL

PLS
 1457
 W 1/16
 C ————— C
 S I
 1981

Accessories Found:

PER M 88-13
26" NOW 29" DIA. D. FIR WITH AN AXED "X" UPPER BLAZE
AND A PARTIALLY HEALED LOWER BLAZE WITH ILLEGIBLE
SCRIBING VISIBLE, BEARS N 82°W, 8.0 FT (REC N 82°W, 8.7 FT
TO CENTER OF TRUNK).

25" NOW 28" DIA. SPRUCE WITH AN AXED "X" UPPER BLAZE AND
A PARTIALLY HEALED LOWER BLAZE, NO SCRIBING VISIBLE, BEARS
S 29°E, 11.5 FT (AGREES WITH REC).

#117 Xc

C.S. File No. 62/64

RENEWAL

NEW DC SO BY IP SET

Monument Set (Procedure and Description)

Monument Detail

DOUGLAS COUNTY SURVEYORS

N 1/6

C ————— C

51

1989

OFFICE

A 2 1/2" DIA. DC SO BRASS CAP ON A 1 3/8" O.D. BY 32" LONG IRON PIPE, PROTRUDES 6" ABOVE GROUND

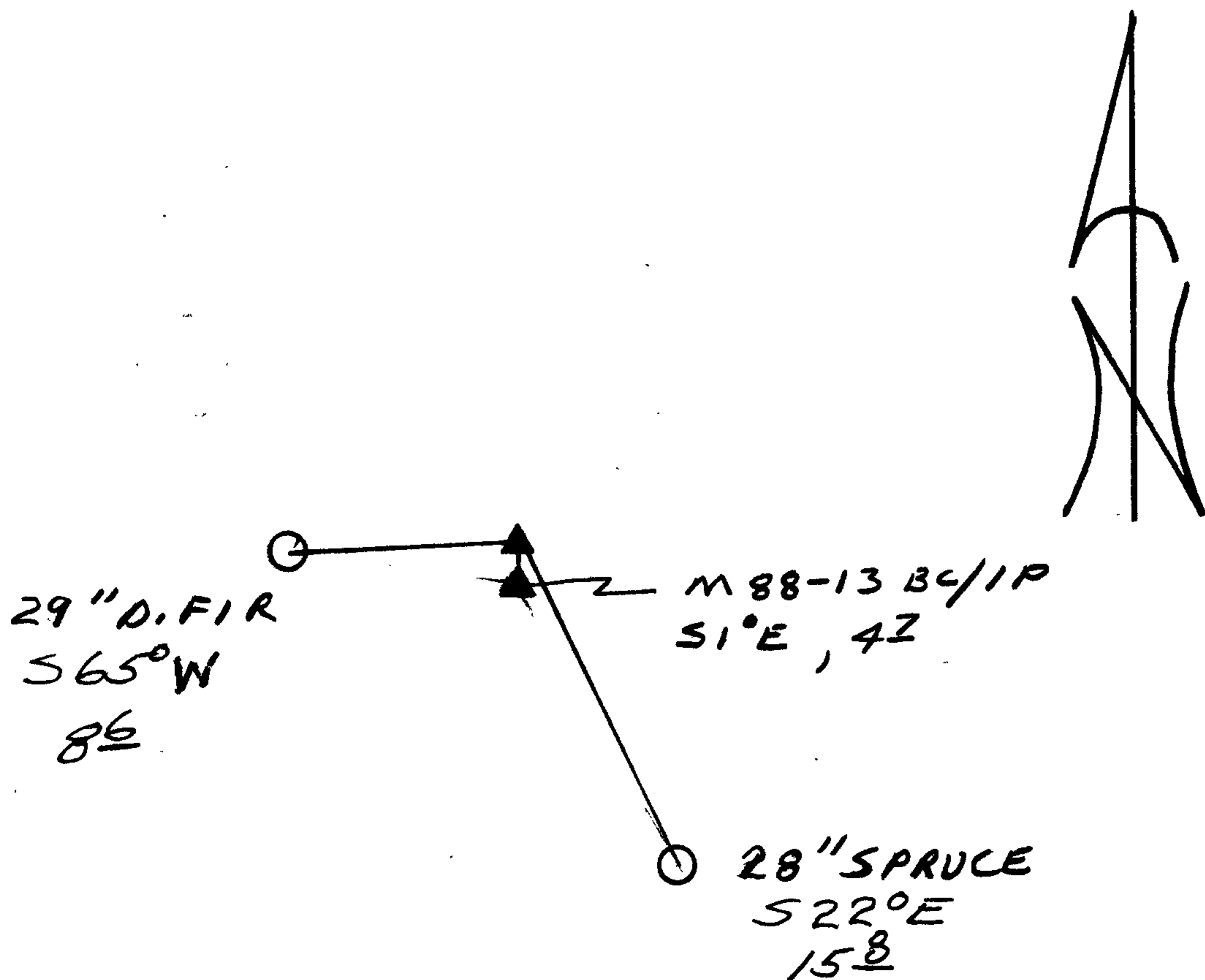
New Accessories

29" DIA. D. FIR WITH AN AXED "X" UPPER BLAZE AND PARTIALLY HEALED LOWER BLAZE WITH ILLEGIBLE SCRIBING VISIBLE, BEARS S 65° W, 8.6 FT BT PER M 88-13 (BLAZE FACES S 82° E).

28" DIA. SPRUCE WITH AN AXED "X" UPPER BLAZE AND PARTIALLY HEALED LOWER BLAZE, NO SCRIBING VISIBLE, BEARS S 22° E, 15.8 FT, BT PER M 88-13

1991 2 1/2" BRASS CAP / IRON PIPE BEARS S 1° E, 4.7 FT.

Sketch of Monument, Accessories, and General Area



Location & Comments

Comp. Declin. 18 1/2° E
Agency DC SO
Party Chief RANDALL W SMITH
Notekeeper Randall W Smith
Witnesses STEPHEN J FLAUSE

Address

Surveyor's Seal

REGISTERED PROFESSIONAL LAND SURVEYOR

Larry E. Monrean

OREGON
JULY 13, 1979
LARRY E. MONREAN
#1830

CORNER #6

GOVERNMENT CORNER RESTORATION FORM

FILED

Township 20S Range 12W Sec. 1 County DOUGLAS

State OR Date JULY 26, 1988 No. _____

APR 28 1989

Corner Designation

CEW 1/64

COUNTY SURVEYOR
DOUGLAS COUNTY, ORE.

- Condition Report Only
- Not Found
- Renewed
- Unrecorded
- Surveyed In
- Referenced Out

Previous Renewals M 88-13

Monument(s) Found: (Condition and Source)

A 2 1/2" DIA. BRASS CAP ON A 2 1/4"
P.O. I.P. PROTRUDES 8 IN. ABOVE
GROUND.

MONUMENT DETAIL

PLS 1457

EW 1/64

C _____ C
1981

Accessories Found:

PER M 88-13

25" NOW 29" DIA. D.FIR WITH AN AXED "X" IN BARK AND A
PARTIALLY HEALED LOWER BLAZE, ILLEGIBLE SCRIBE MARKS
VISIBLE BEARS S 63° W, 27.5 FT. (AGREES WITH RECORD).

9" NOW 11" DIA. SPRUCE WITH AN AXED "X" IN BARK AND A
PARTIALLY HEALED LOWER BLAZE, ILLEGIBLE SCRIBE MARKS
VISIBLE BEARS N 11° E, 24.2 FT. (AGREES WITH RECORD).

C.S. File No. 62/64

RENEWAL

Monument Set (Procedure and Description)

NONE

Lined area for Monument Set details, currently empty.

Monument Detail

N/A

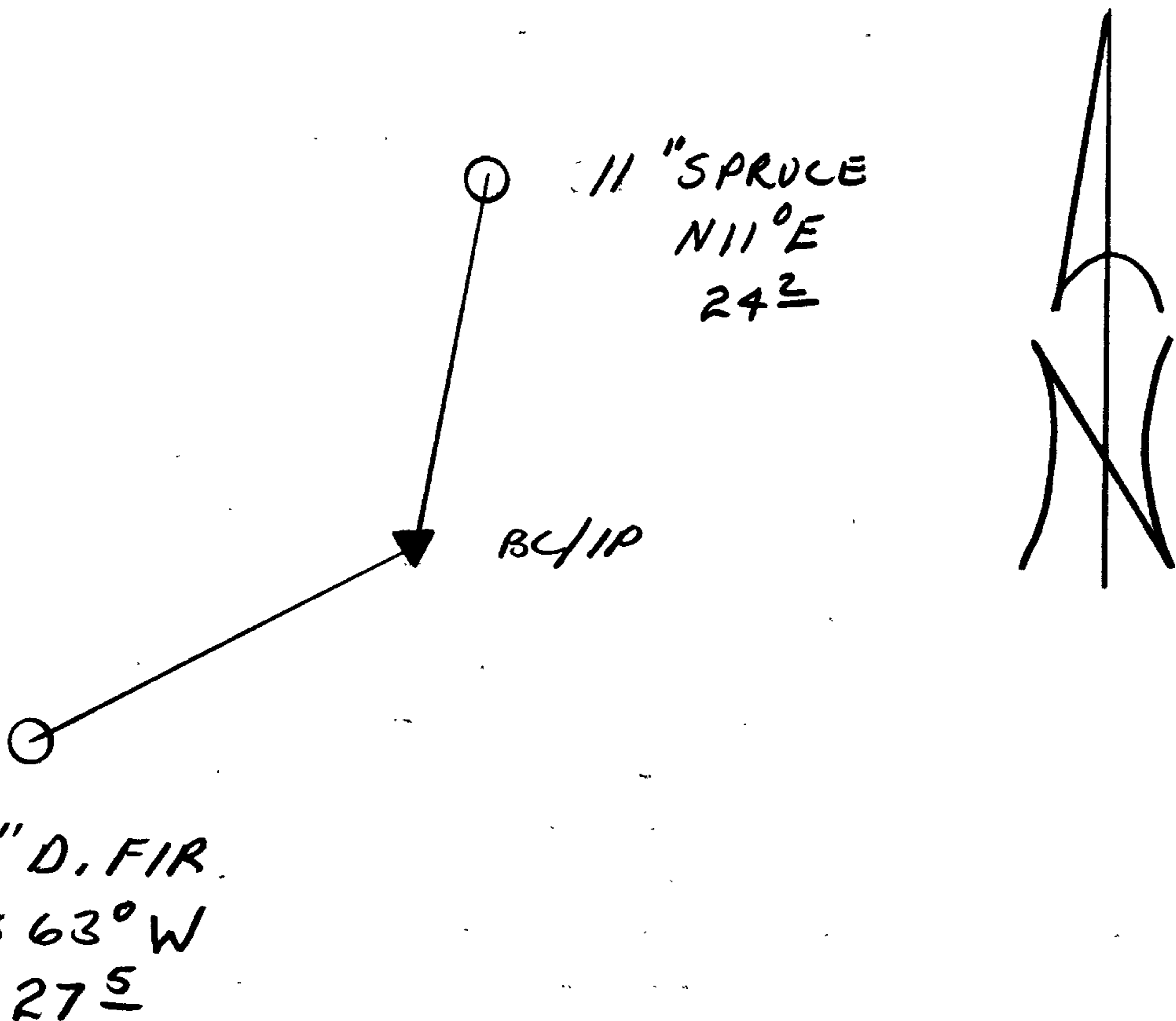
New Accessories

NONE

Lined area for New Accessories details, currently empty.

Sketch of Monument, Accessories, and General Area

Location & Comments



Comp. Declin. 18 1/2° E
 Agency DCSO
 Party Chief RANDALL W SMITH
 Notekeeper Randall W Smith
 Witnesses STEPHEN J FLAISE

Address

Surveyor's Seal

REGISTERED
PROFESSIONAL
LAND SURVEYOR

Larry E. Monrean

OREGON
JULY 13, 1979
LARRY E. MONREAN
#1830

CORNER #7

GOVERNMENT CORNER RESTORATION FORM

FILED

Township 20S Range 12W Sec. 1 County DOUGLAS

State OR Date JULY 26, 1988 No. _____

APR 28 1989

Corner Designation

C 1/4

COUNTY SURVEYOR
DOUGLAS COUNTY, ORE.

- Condition Report Only
- Not Found
- Renewed
- Unrecorded
- Surveyed In
- Referenced Out

Previous Renewals M 88-13

Monument(s) Found: (Condition and Source)

2 1/2" DIA BRASS CAP ON A 2 1/4" O.D
IRON PIPE PROTRUDING 10" ABOVE
GROUND.

A 1/2" IRON PIPE 46" LONG IRON
PIPE, LOOSELY SET PROTRUDING
APPROX. 40 IN ABOVE GROUND.

PLS: 1457

T20S R12W

CY4 S1

1981

Accessories Found:

PER M 88-13 (BEARINGS AND DISTANCES TO M88-13 BC/1P)
24" NW 26" DIA MAPLE WITH A POSSIBLE FULLY HEALED BLAZE
BEARS S64°W, 30.8 FT (AGREES WITH RECORD)

12" NW 13" DIA ALDER WITH BARK SCRIBING "CY4 BT S1"
BEARS S29°E, 19.3 FT (RECORD S29°E, 20.2 FT).

9" NW 11" DIA. DOUBLE TRUNKED SPRUCE A FULLY HEALED BLAZE
IS ON PISTOL BUTT SOUTH TRUNK. CENTER OF ROOT CROWN BEARS
N45°E, 27.7 FT (RECORD N40°E, 28.8 FT).

#1154c

C.S. File No. 62/64

RENEWAL

Monument Set (Procedure and Description)

Monument Detail

A 2 3/8" DIA. DCSO BRASS CAP ON A 1 3/8" O.D. BY 42" LONG IRON PIPE PROTRUDING 6" ABOVE GROUND.

DOUGLAS COUNTY SURVEYORS

T20S R12W

CY4 S1

1989

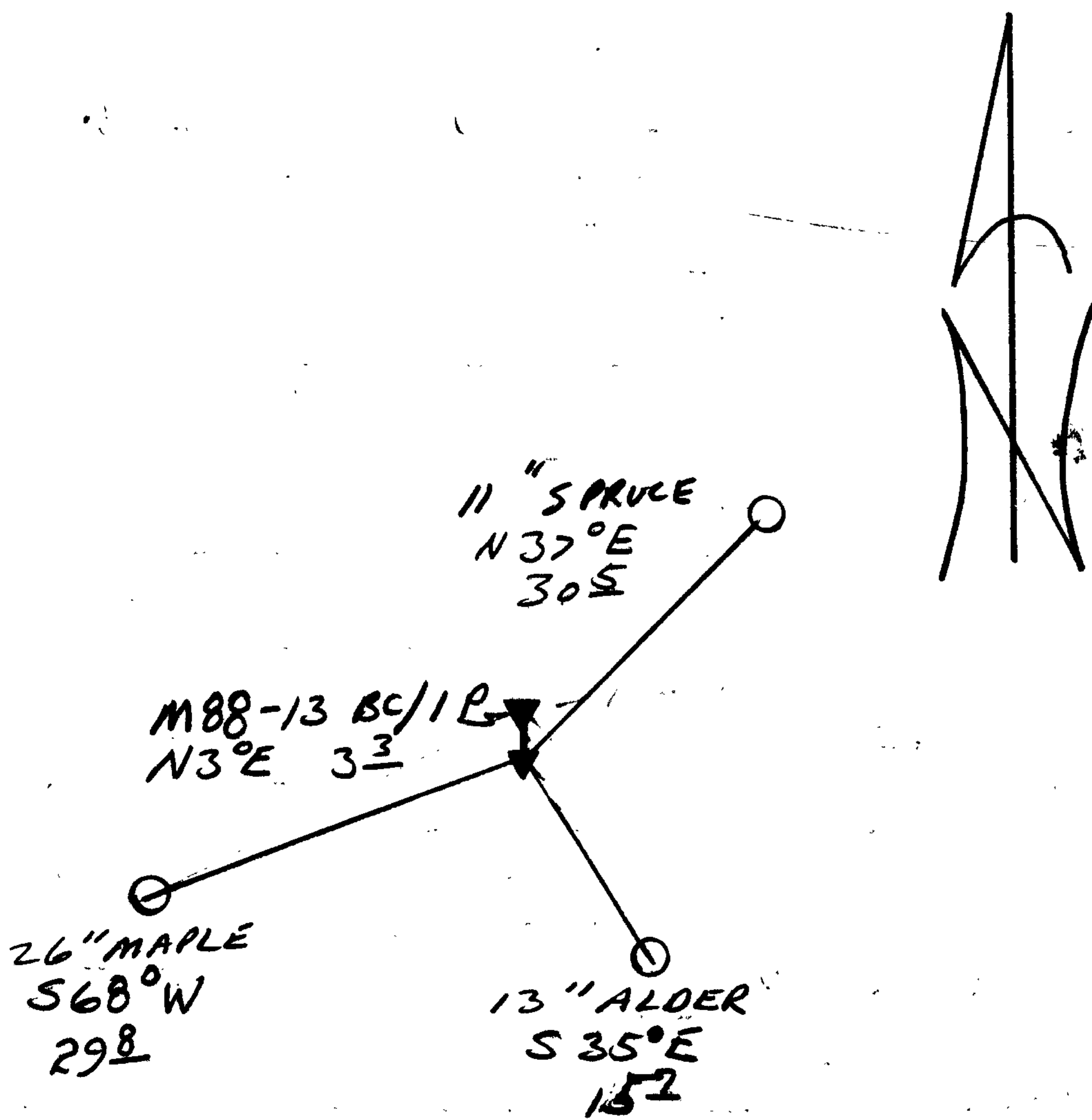
OFFICE

New Accessories

26" DIA. MAPLE WITH A POSSIBLE FULLY HEALED BLAZE BEARS S68°W, 29.8 FT
 13" DIA. ALDER WITH BARK SCRIBING "CY4 BT S1" BEARS S35°E, 15.7 FT
 11" DIA. DOUBLE TRUNKED SPRUCE, A FULLY HEALED BLAZE IS ON PISTOL BUTT SOUTH TRUNK. CENTER OF ROOT CROWN BEARS N37°E, 30.5 FT
 1981 2 1/2" BRASS CAP/IRON PIPE, BEARS N3°E, 3.3 FT

Sketch of Monument, Accessories, and General Area

Location & Comments



Comp. Declin. 18 1/2° E
 Agency DCSO
 Party Chief RANDALL W SMITH
 Notekeeper Randall W Smith
 Witnesses STEPHEN J FLAISE

Address

Surveyor's Seal

REGISTERED
 PROFESSIONAL
 LAND SURVEYOR

Larry E. Monrean

OREGON
 JULY 13, 1979
 LARRY E. MONREAN
 #1830

CORNER #8

GOVERNMENT CORNER RESTORATION FORM

FILED

Township 20S Range 12W Sec. 1 County DOUGLAS

State OREGON Date SEPT. 88 No. _____

APR 28 1989

Corner Designation

NW CORNER DEED ON E-W CENTERLINE
SECTION 1 PER M 88-13 DOUG. CO.
SURVEY RECORDS JUNE 1981 SURVEY BY FOX

COUNTY SURVEYOR

DOUGLAS COUNTY, ORE.

Condition Report Only

Not Found

Renewed

Unrecorded

Surveyed In

Referenced Out

Previous Renewals NONE

MONUMENT DETAIL

Monument(s) Found: (Condition and Source)

A 2 1/2 INCH DIAMETER BRASS CAP
(MARKED AS AT RIGHT) ON A 1 1/2 INCH O.D.
IRON PIPE FIRMLY SET AND PROTRUDING
APPROXIMATELY 9 INCHES ABOVE GROUND
(FROM SURVEY M 88-13 AS FILED IN THE
DOUGLAS COUNTY SURVEY RECORDS).

ON N.W. EDGE OF B.C. MONUMENT
A 1 INCH I.D. IRON PIPE PROTRUDES 39 INCHES
ABOVE GROUND. (NO RECORD)

Accessories Found:

TWO BEARING TREES RECORDED FROM SURVEY M 88-13, AS FILED IN THE
DOUGLAS COUNTY SURVEY RECORDS, ARE FOUND.

A 16" SPRUCE NOW A 16 INCH D.B.H SPRUCE, BARK BLAZED "X" AND BARK
SCRIBED "BT" BEARS S 39° W, 20' FEET DISTANT TO CENTER OF ROOT CROWN
OF PISTOL BUTT BASE (AS PER RECORD). A 36" SPRUCE NOW A 38 INCH
D.B.H. SPRUCE WITH A BARK BLAZED "X" AND A PARTIALLY HEALED
PITCHED OVER LOWER BLAZE WITH NO SCRIBING VISIBLE BEARS N 24° E, 232'
FEET DISTANT (AS PER RECORD).

PLS 1457

3

1981

RENEWAL

Monument Set (Procedure and Description)

N/A

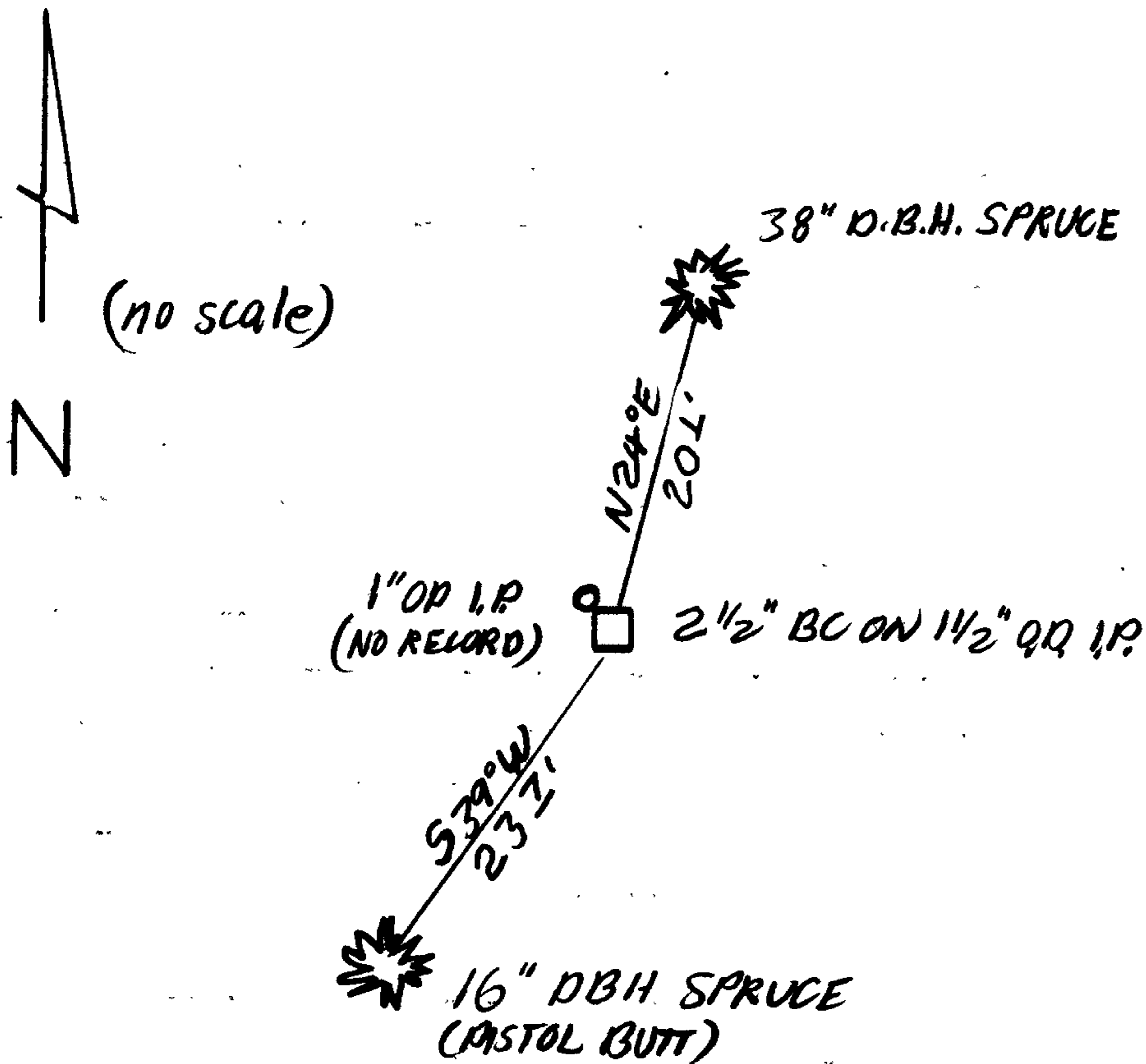
Monument Detail

N/A

New Accessories

N/A

Sketch of Monument, Accessories, and General Area



Location & Comments

MONUMENT IS ON WESTERLY SLOPE OF A NORTH RUNNING RIDGE AND APPROXIMATELY 100 FT. NORTH AND 40+ FT. LOWER THAN AN OLD EAST WEST RUNNING LOGGING ROAD

Comp. Declin. 18°E
Agency DCSO
Party Chief R.W. SMITH
Notekeeper Stephen John Flause
Witnesses S. J. FLAUSE

Address

Surveyor's Seal

REGISTERED
PROFESSIONAL
LAND SURVEYOR

Larry E. Monrean

OREGON
JULY 13, 1979
LARRY E. MONREAN
#1830

CORNER # 10

GOVERNMENT CORNER RESTORATION FORM

FILED

Township 20S Range 12W Sec. 1 County DOUGLAS

[Signature]

APR 28 1989

State OR Date JULY 25, 1988 No. _____

Corner Designation

W $\frac{1}{16}$ $\frac{S1}{S12}$

COUNTY SURVEYOR
DOUGLAS COUNTY, ORE.

- Condition Report Only
- Not Found
- Renewed
- Unrecorded
- Surveyed In
- Referenced Out

Previous Renewals M88-13

MONUMENT DETAIL

Monument(s) Found: (Condition and Source)

2 1/2" DIA. BRASS CAP ON A 2 1/4" O.D. IRON PIPE, PROTRUDES 13 IN. ABOVE GROUND.

PLS 1457

W $\frac{1}{16}$ $\frac{S1}{S12}$

1981

Accessories Found:

23" NOW 32" DIA. HEMLOCK WITH AN AXED "X" IN BARK, AND A PARTIALLY HEALED LOWER BLAZE SCRIBE VISIBLE "1/16 BT" BEARS N77°W, 37.3 FT. (AGREES WITH RECORD) PER M88-13

12" NOW 17" DIA. SPRUCE WITH A PARTIALLY HEALED DOUBLE BLAZE, ILLEGIBLE SCRIBED MARKS SEEN IN LOWER BLAZE, BEARS S30°W, 46.2 FT (AGREES WITH RECORD) PER M88-13

RENEWAL

Monument Set (Procedure and Description)

NONE

Monument Detail

N/A

New Accessories

NONE

Sketch of Monument, Accessories, and General Area

SILT COOS
LAKE

32" HEMLOCK
N77°W
373

BC/IP

SWAMP

17" SPRUCE
S30°W
462

Location & Comments

CORNER LIES IN SWAMPY
AREA ADJACENT TO SMALL
INLET ON SOUTH SIDE
OF FIDDLE CREEK ARM OF
SILT COOS LAKE.

Comp. Declin. 18 1/2° E

Agency DLSO

Party Chief RANDALL W SMITH

Notekeeper STEPHEN J FLAUSE

Witnesses _____

Address

Surveyor's Seal

REGISTERED
PROFESSIONAL
LAND SURVEYOR

Larry E. Monrean

OREGON
JULY 13, 1979
LARRY E. MONREAN
#1830

RC

CORNER # 11

GOVERNMENT CORNER RESTORATION FORM

FILED

SR

Township 20 S Range 12 W Sec. 1 County DOUGLAS

APR 28 1989

State OR Date JULY 25, 1988 No. _____

COUNTY SURVEYOR
DOUGLAS COUNTY, ORE.

Corner Designation

1/4 S 1
S 12

- Condition Report Only
- Not Found
- Renewed
- Unrecorded
- Surveyed In
- Referenced Out

Previous Renewals #4, #27, M88-13

Monument(s) Found: (Condition and Source)

1/2" O.D. IRON PIPE WITH BRASS CAP
PROTRUDES 4 IN ABOVE GROUND.
PER REN #27

1/2" O.D. IRON PIPE PROTRUDES 15 IN
ABOVE GROUND PER REN #4
(DESCRIBED AS ACCESSORY FOUND; BELOW)

COUNTY SURVEYORS OFFICE

T 20 S

1/4 S 1
S 12

R 12 W

1964

Accessories Found:

DIST. AND BRG'S TO BC/IP

36" NOW 43" DIA. 6 FT HIGH SPRUCE STUMP WITH A FULLY
HEALED DOUBLE BLAZE BEARS N 72 1/2° W, 47.2 FT (AGREES
WITH REC. PER REN #27).

36" NOW 44" DIA. SPRUCE WITH A FULLY HEALED DOUBLE
BLAZE BEARS S 63° E, 18.0 FT (AGREES WITH REC.
PER REN #27).

1/2" I.P. SET PER REN #4 AS 1/4 CORNER BEARS N 87 1/4° E,
226.11 FT (AGREES WELL WITH M88-13 RECORD PER RM 1-47
APPARENTLY HAS A MIXUP IN BEARING, (S 87° 11' 40" E, 226.12 FT).

#116 Xc

C.S. File No. 62/64

RENEWAL

Monument Set (Procedure and Description)

NONE

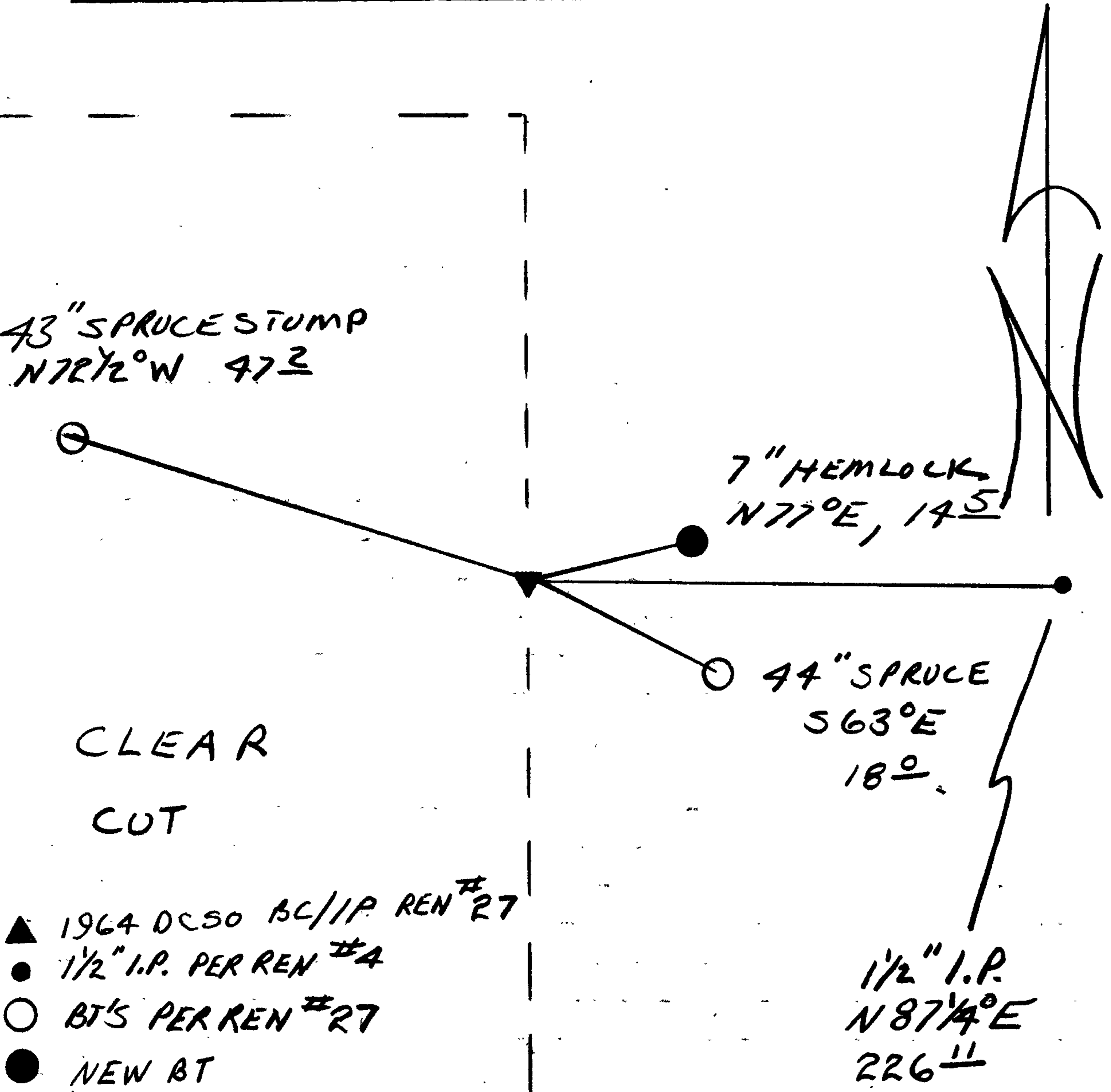
Monument Detail

N/A

New Accessories

7" HEMLOCK DOUBLE BLAZED AND SCRIBED "1/4 SICS BT" BEARS N77°E, 14.5 FT.

Sketch of Monument, Accessories, and General Area



Location & Comments

ON VISIT TO CORNER AUG 18, 1988 NEW 7" HEMLOCK BT WAS DESTROYED BY RECENT CAT WORK, IT IS DOWN AND OUT OF POSITION.

CORNER LIES AT THE EAST EDGE OF A RECENTLY LOGGED CLEAR CUT.

Comp. Declin. 18 1/2° E Agency DCSD Party Chief RANDALL W SMITH Notekeeper Randall W Smith Witnesses STEPHEN J FLAISE

Address

Surveyor's Seal

REGISTERED PROFESSIONAL LAND SURVEYOR

Larry E. Monrean

OREGON JULY 13, 1979 LARRY E. MONREAN #1830



IN REPLY REFER TO:

United States Department of the Interior

9600 (942)

BUREAU OF LAND MANAGEMENT

OREGON STATE OFFICE
P.O. Box 2965 (825 NE Multnomah Street)
Portland, Oregon 97208

May 22, 1987

Mr. Ed Monrean
Douglas County Surveyors Office
Justice Building, Room 205
Roseburg, Oregon 97470

Dear Ed:

Earlier this month, you requested over the telephone the proper method of subdividing section 1, T. 20 S., R. 12 W., W.M., Oregon. This township was partially surveyed by Harvey Gordon in 1857, as shown on the plat approved September 6, 1858. Section 1 borders Lake Siltcoos and is fractional; Gordon surveyed the east, south, and north boundaries of the section.

Since Gordon established the north and south $\frac{1}{4}$ corners of section 1, the N.-S. center line would be run from $\frac{1}{4}$ corner to $\frac{1}{4}$ corner. The E.-W. center lines would be surveyed on mean bearings of the north and south boundaries. A weighted mean bearing would not be used because it results in only a minute and one half difference and this method is normally used where one boundary is considerably shorter than the other.

You also asked why the lots in the N $\frac{1}{2}$ NE $\frac{1}{4}$ had areas of 40.80 acres each. We cannot get these areas based on the plat distances, regardless of which subdivisional method is used. We also can't get the same areas on the lots bordering Lake Siltcoos in section 1. There are errors by the draftsman of the meander line, as shown on the 1858 plat as the E.-W. center lines intersect the meander line in different locations than as shown on the plat, particularly between Lots 6 and 7.

Sincerely,

William W. Glenn

William W. Glenn
Chief, Branch of Cadastral Survey

COPY

62/44
C.S. File No. ~~63/166~~