

COUNTY SURVEYORS FILE DATA
DO NOT REMOVE FROM OFFICE

FILED *off*
APR 23 1986
COUNTY SURVEYOR
DOUGLAS COUNTY, OREG.
TR

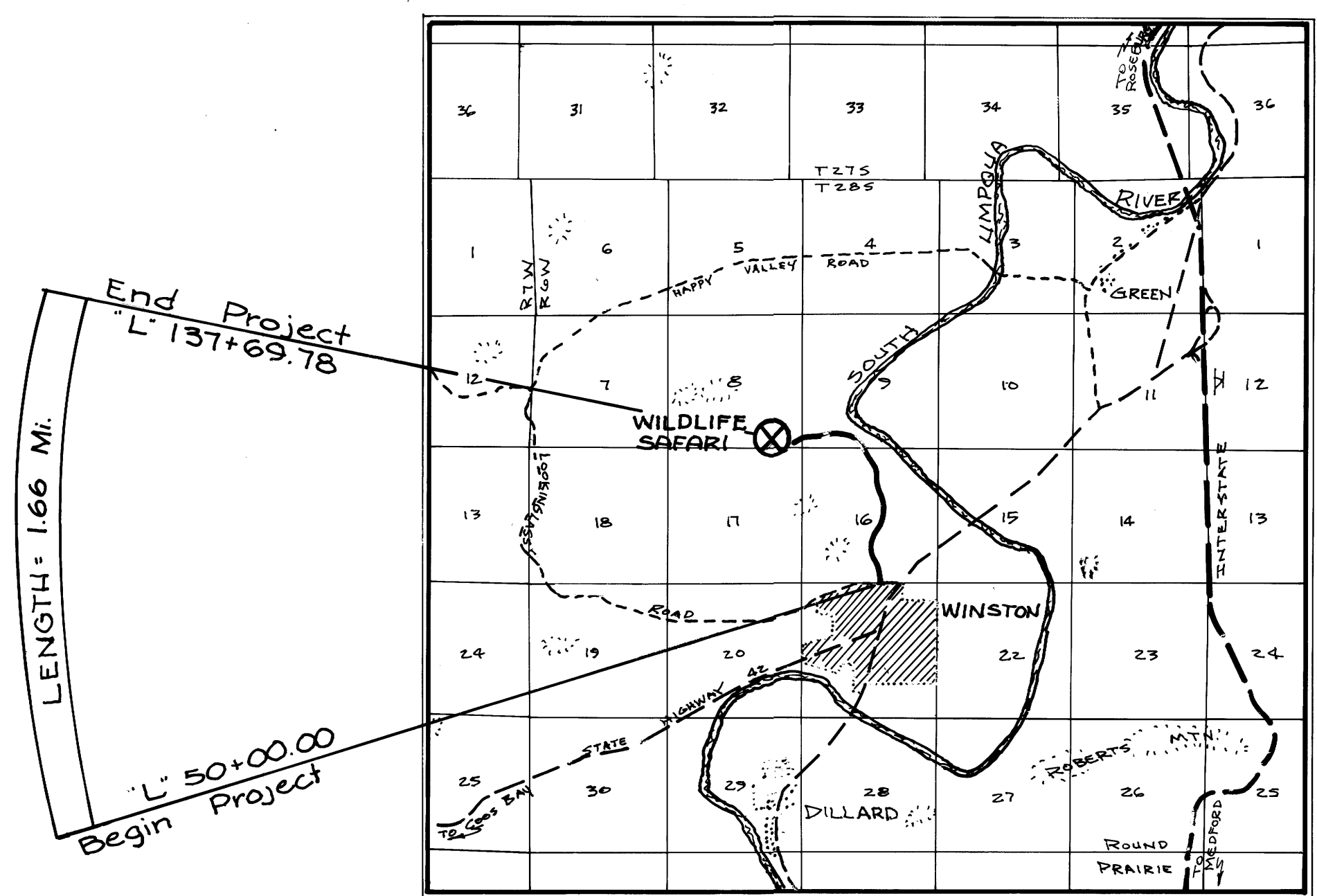
SAFARI DRIVE

Survey for WILDLIFE SAFARI
921 HELWEG RD.
WINSTON, OREGON

Survey by BHW ENG & SURVEYING, INC.
TERMINAL BUILDING, ROSEBURG AIRPORT
ROSEBURG, OREGON

JULY, 1974

Donald M. Burt



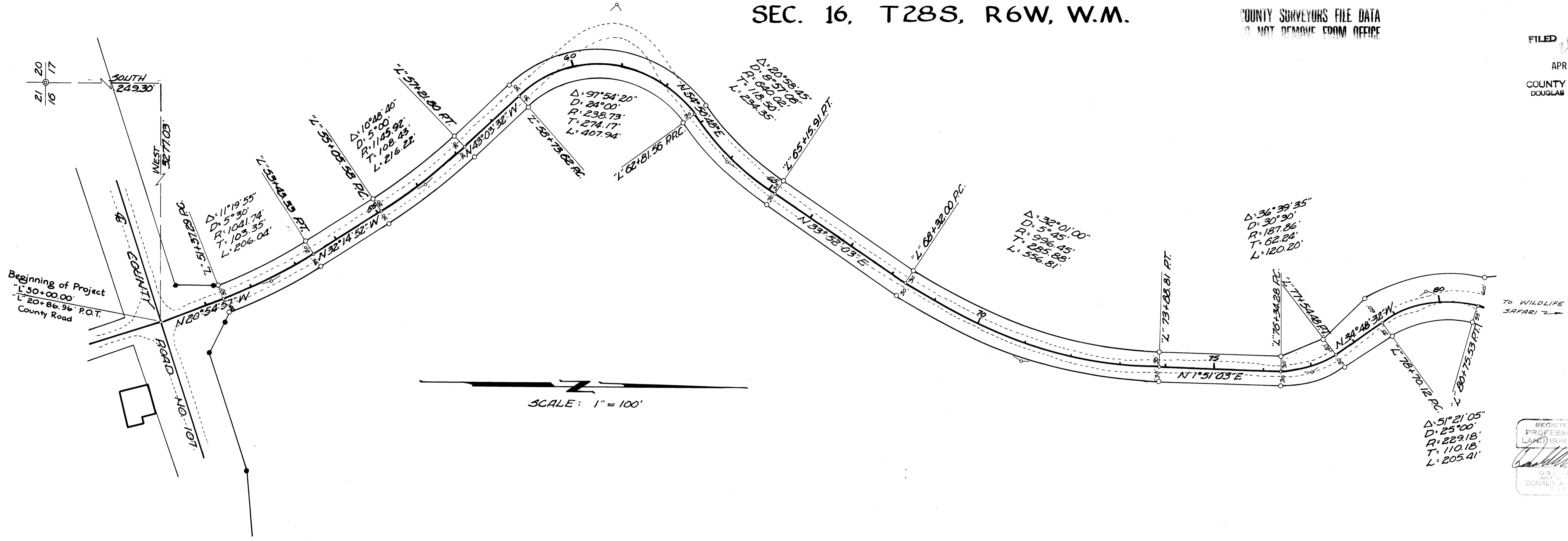
VICINITY MAP
SCALE: 1" = 1 MILE

COUNTY SURVEYORS FILE DATA
DO NOT REMOVE FROM OFFICE

SEC. 16, T28S, R6W, W.M.

COUNTY SURVEYORS FILE DATA
DO NOT REMOVE FROM OFFICE

FILED
APR 23 1986
COUNTY SURVEYOR
DOUGLAS COUNTY, ORE.
TP

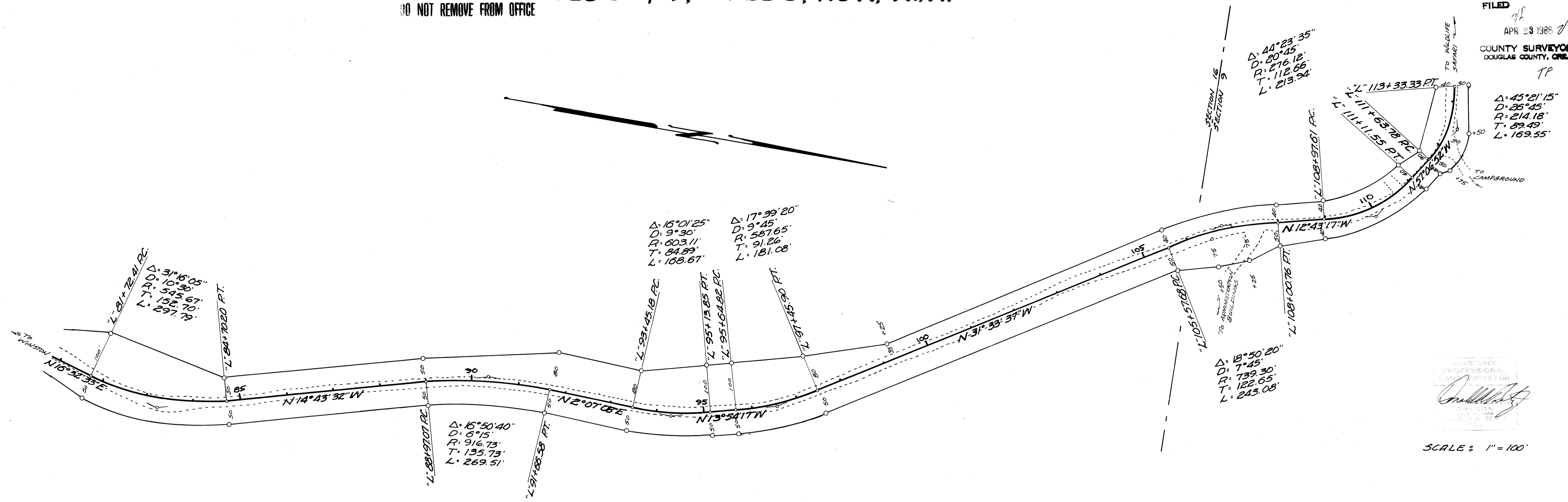


REGISTERED
PROFESSIONAL
LAND SURVEYOR
Donald A. File
OREGON
NO. 1000
DONALD A. FILE
1970

COUNTY SURVEYORS FILE DATA
DO NOT REMOVE FROM OFFICE

BHW ENGINEERING, INC.
FOR
WILDLIFE SAFARI
JULY 1974 SHEET 2 of 4

COUNTY SURVEYORS FILE DATA DO NOT REMOVE FROM OFFICE SEC 16 & 9, T28S, R6W, W.M.



FILED
 APR 28 1988
 COUNTY SURVEYOR
 DOUGLAS COUNTY, OKLA.
 TP

REGISTERED
 PROFESSIONAL
 LAND SURVEYOR
 [Signature]
 3450 N. WILSON
 OKLAHOMA CITY, OKLA.
 73104

SCALE: 1" = 100'

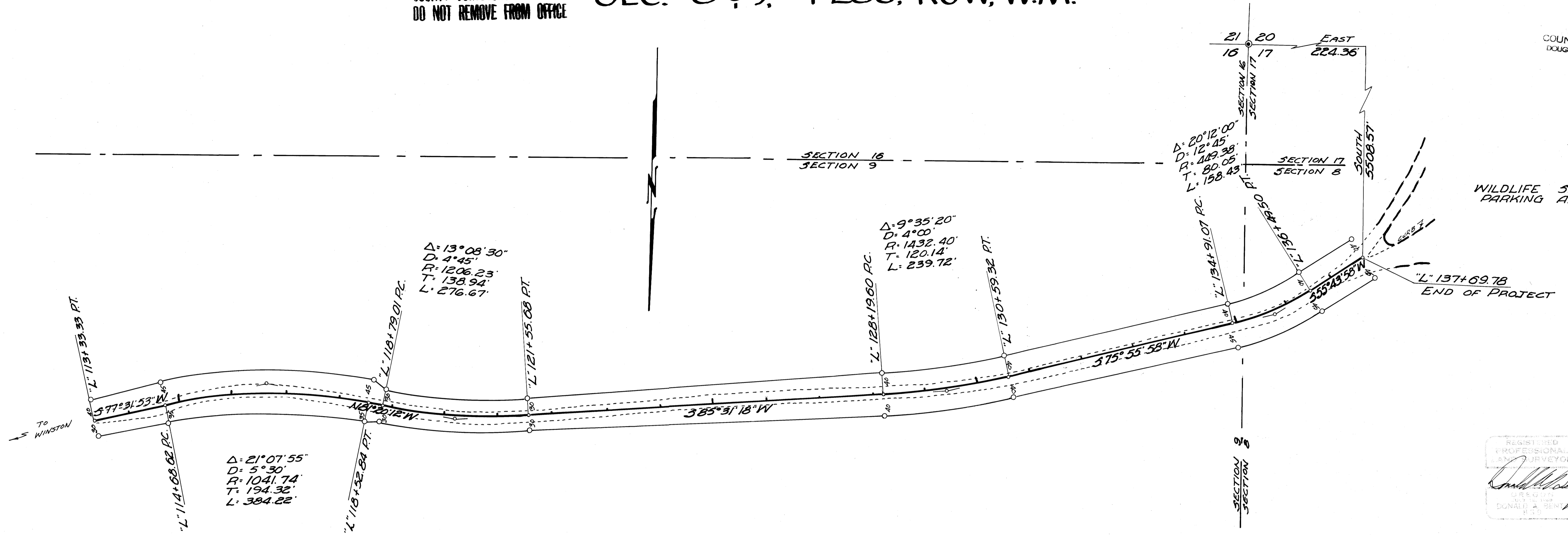
COUNTY SURVEYORS FILE DATA
 DO NOT REMOVE FROM OFFICE

BHWENG & SURVEYING, INC.
 FOR
 WILDLIFE SAFARI
 JULY 1974 SHEET 3 of 4

COUNTY SURVEYORS FILE DATA
DO NOT REMOVE FROM OFFICE

SEC. 8 & 9, T28S, R6W, W.M.

FILED *dh*
APR 23 1986
COUNTY SURVEYOR
DOUGLAS COUNTY, OR
RP



WILDLIFE SAFARI
PARKING AREA

L 137+69.78
END OF PROJECT

REGISTERED
PROFESSIONAL
SURVEYOR
Donald A. Bent
DONALD A. BENT
1975

SCALE: 1" = 100'

COUNTY SURVEYING FILE DATA
DO NOT REMOVE FROM OFFICE

BHWENG & SURVEYING, INC.
FOR
WILDLIFE SAFARI
JULY 1974 SHEET 4 of 4