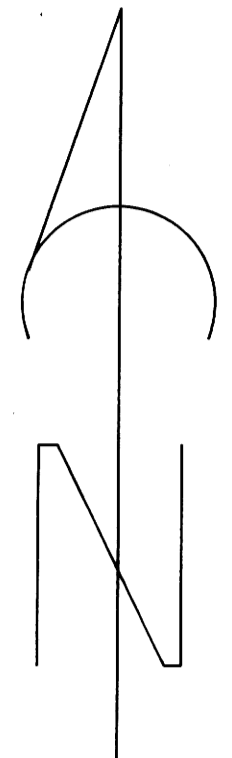


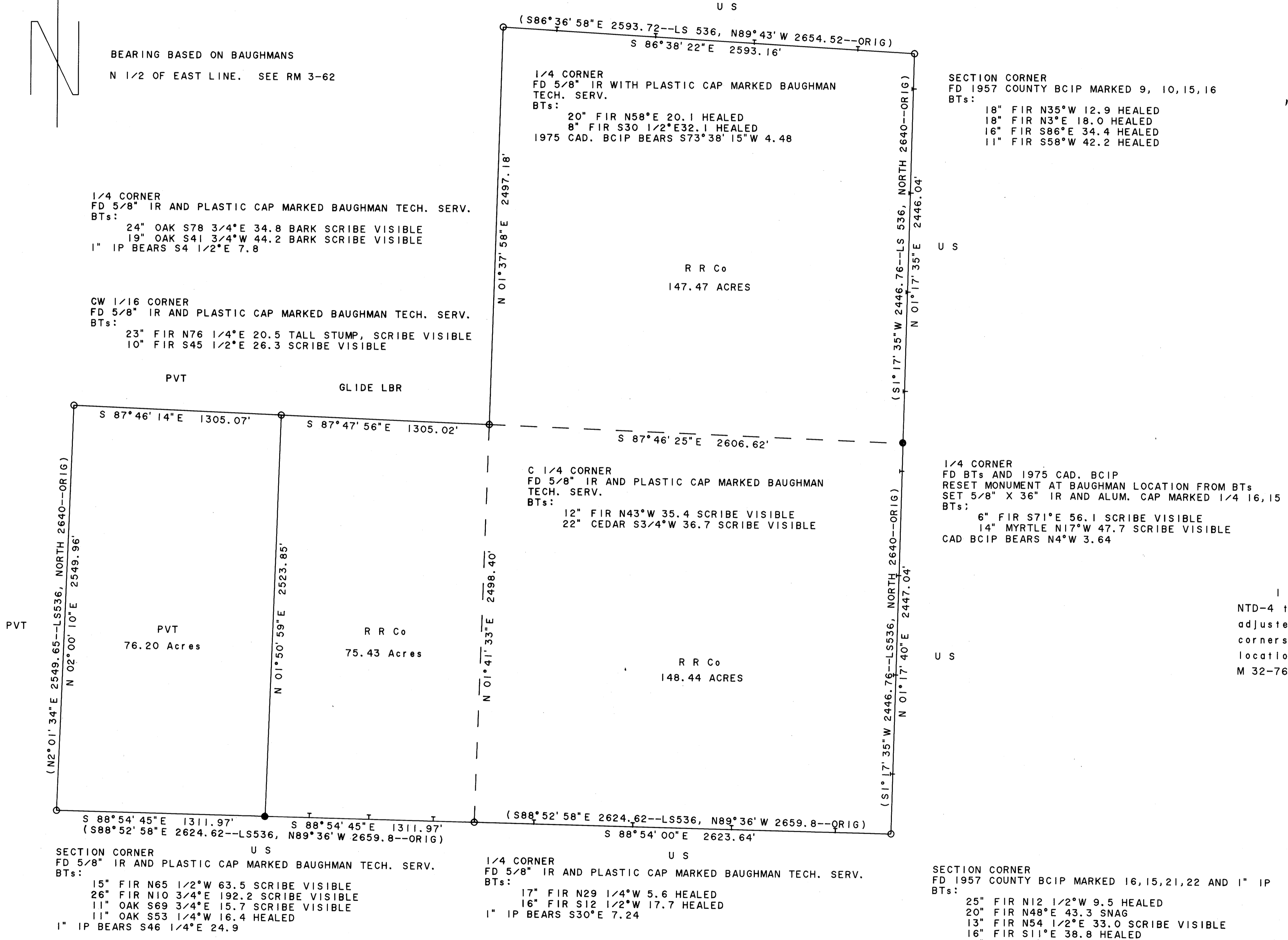
# RESURVEY AND SUBDIVISION OF SW 1/4 AND RETRACEMENT OF PROPERTY LINES IN E 1/2 SECTION 16, T28S, R7W, W. M. FOR ROSEBURG RESOURCES COMPANY

NOVEMBER 14, 1988



BEARING BASED ON BAUGHMANS  
N 1/2 OF EAST LINE. SEE RM 3-62

SCALE: 1" = 400'



### LEGEND

- Monument found as noted
- Set IR & alum cap marked R R Co, LS 498
- Section or property line
- - - Subdivision or calculated line
- ⊥ Line referenced to aluminum tags
- ( ) Record data

I ran a closed traverse in Section 16 using a Nikon NTD-4 total station. I achieved a precision of 1:35155 and adjusted the traverse by the transit method. I set the corners by standard subdivision procedure based on the location of the existing monuments. For more data, see M 32-76 (Stiles, 1967) and RM 3-62 (Baughman, 1984).

Howard W. Johnstone  
P. O. Box 1088  
Roseburg, Oregon

REGISTERED  
PROFESSIONAL  
LAND SURVEYOR

*Howard W. Johnstone*

OREGON  
MAY 13, 1980  
HOWARD W. JOHNSTONE  
498