

SURVEY FOR

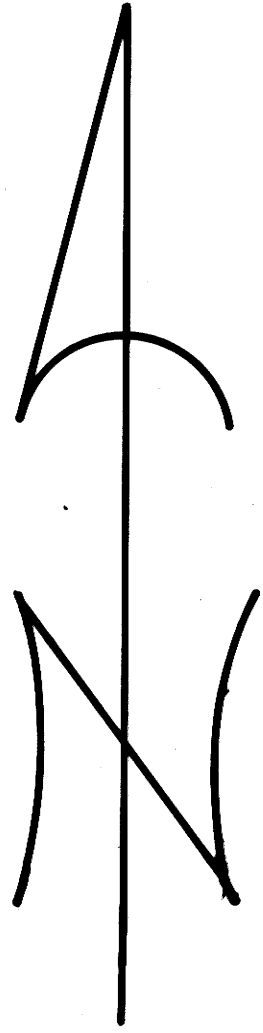
DOUGLAS COUNTY PARKS DEPT.

NW 1/4 OF S.13, T.22S, R.13W, W.M.

FILED *fr*
FEB 11 1988
COUNTY SURVEYOR
DOUGLAS COUNTY, ORE.

C.S. FILE 62/49
MAP FILE M11-35

SURVEYED BY DOUGLAS COUNTY SURVEYOR'S OFFICE
FRANCIS L. INGRAM
COUNTY SURVEYOR
JANUARY 1988



SCALE 1" = 100'
THETA ANGLE = 2°31'45"

LEGEND

- FOUND 5/8" IRON ROD
- FOUND IRON PIPE AS NOTED
- FOUND 6" X 6" CONCRETE POST
- ⊙ FOUND 1982 BLM 2 1/2" BRASS CAP ON A 2" IRON PIPE
- CALCULATED POINT NOT SET
- ⊙ SET 5/8" X 30" IRON ROD WITH A DCSS ALUMINUM CAP
- SET 8" X 42" CONCRETE FILLED BELLTILE WITH 3" DIA. DCSS BRASS CAP
- M 1-74 RECORD
- () C.S. 51/252 RECORD
- [] M 66-64 RECORD

NOTE: BEARINGS AND DISTANCES SHOWN ARE TRUE, SURVEY BASED ON THE OREGON STATE PLANE COORDINATE SYSTEM, SOUTH ZONE, USING THE FOLLOWING CONTROL STATIONS:

S 1/4 SEC. 12 — N 751,069.94
(2 1/2" IRON PIPE) E 1,023,271.46
NO 13 — N 752,500.24
(USC 8 GS BRASS CAP) E 1,023,870.81

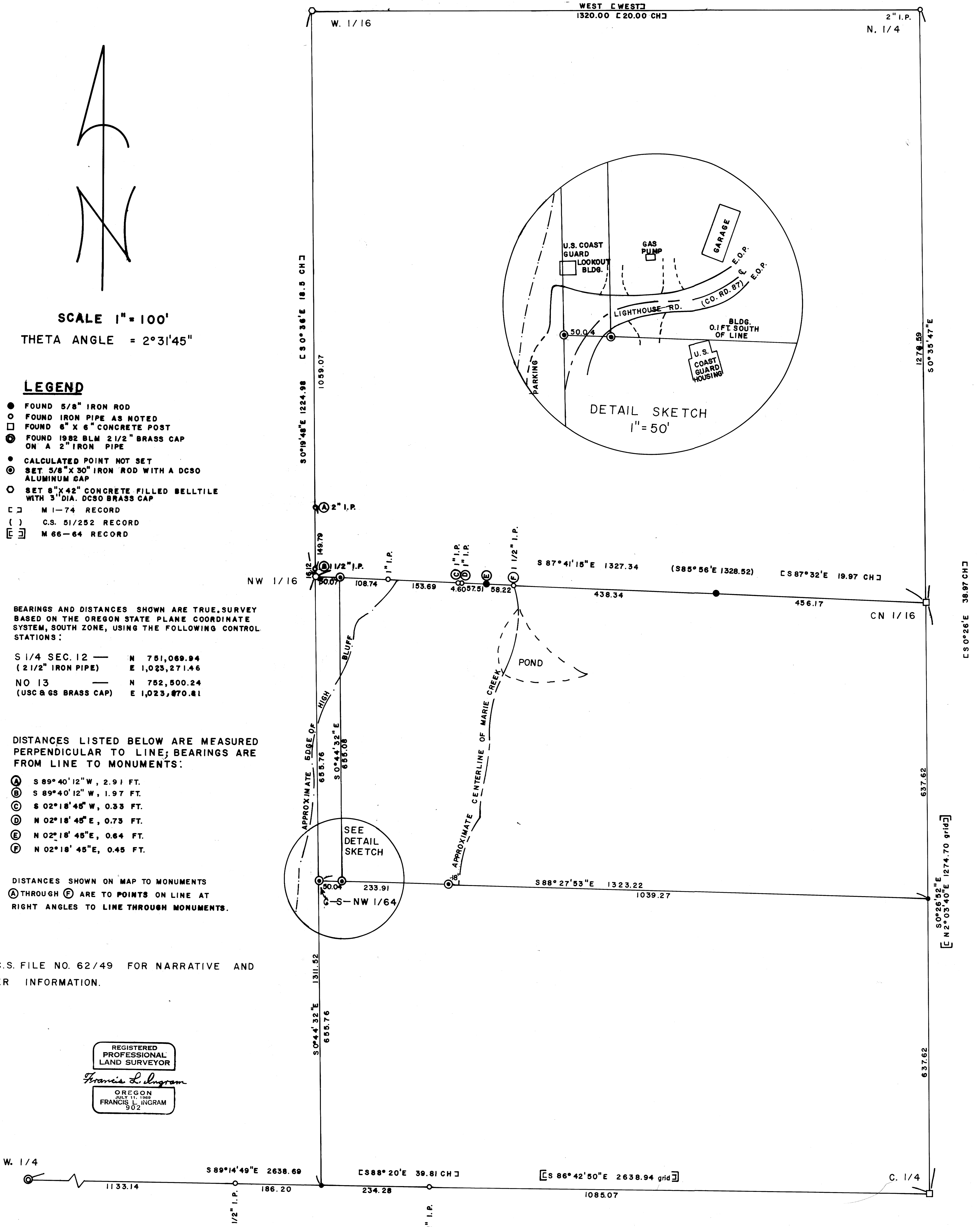
DISTANCES LISTED BELOW ARE MEASURED PERPENDICULAR TO LINE; BEARINGS ARE FROM LINE TO MONUMENTS:

- Ⓐ S 89° 40' 12" W, 2.91 FT.
- Ⓑ S 89° 40' 12" W, 1.97 FT.
- Ⓒ S 02° 18' 45" W, 0.33 FT.
- Ⓓ N 02° 18' 45" E, 0.73 FT.
- Ⓔ N 02° 18' 45" E, 0.64 FT.
- Ⓕ N 02° 18' 45" E, 0.45 FT.

NOTE: DISTANCES SHOWN ON MAP TO MONUMENTS Ⓐ THROUGH Ⓕ ARE TO POINTS ON LINE AT RIGHT ANGLES TO LINE THROUGH MONUMENTS.

SEE C.S. FILE NO. 62/49 FOR NARRATIVE AND CORNER INFORMATION.

REGISTERED
PROFESSIONAL
LAND SURVEYOR
Francis L. Ingram
OREGON
JULY 11, 1982
FRANCIS L. INGRAM
902



C.S. FILE 62/49
MAP FILE M11-35

M 101 - 35

FILED

JS

FEB 11 1988

COUNTY SURVEYOR
DOUGLAS COUNTY, ORE.

January 1988

Narrative of survey for Douglas County Parks Dept. in the NW $\frac{1}{4}$ of Section 13,
Township 22 South, Range 13 West, W.M.

PURPOSE:

To locate and monument lines described in Quitclaim Deed Book 594, Page
1056, of the Douglas County Deed Records.

SURVEY INFORMATION USED:

- Original survey by Harvey Gordon, October 1857.
- Subdivision of section survey by H.L. Eppstein, County Surveyor, October
1931 (M 1-74).
- Survey by Richard J. Hintz, October 1963 (CS 51/252).
- Lighthouse Road #87 survey by George E. Grubb, County Engineer, October
1967.
- Survey by Francis L. Ingram, County Surveyor, May 1975 (M 56-14, CS
57/31).
- Survey by John E. Hollingsworth, August 1977 (M 66-64, CS 58/152).
- Douglas County Corner Renewal Records.

EQUIPMENT USED:

In running main line traverse and setting monuments.

Kern DKM2AE one second theodolite
Lietz Sokkisha Red-1 EDM
Chain

In building, pavement and driveway ties, near south line of Douglas County
Parks property.

Kern DKM2AE one second theodolite
Cloth tape
Chain

In determining high bluff and center line of Marie Creek.

Keuffel and Esser staff compass
Cloth tape

This narrative corresponds with survey Map No. M 101 - 35

PROCEDURES:

Third order Class II procedures were used to run main line traverse and
set monuments.

Base of bearings was determined between Control Point No. 13 and the S $\frac{1}{4}$ Sec.
12 (N $\frac{1}{4}$ Sec. 13).

No. 13 N. 752,500.24
 E. 1,023,870.81

S $\frac{1}{4}$ Sec. 12 N. 751,069.94
 E. 1,023,271.46

Theta Angle = $-2^{\circ} 31' 45''$
Scale Factor = 0.999925845

M 101-35

FILED

SL

FEB 11 1988

COUNTY SURVEYOR
DOUGLAS COUNTY, ORE.

Government corners used as found:

C $\frac{1}{4}$, CN 1/16, and N $\frac{1}{4}$ also the W $\frac{1}{4}$ corner location as previously determined by Hollingsworth (M 66-64) and accepted by BLM survey approved Jan. 6, 1984.

Government corners set by this survey:

NW 1/16, W 1/16 on north line of section, and the C-S-NW 1/64 corner.

Two iron pipes were found in the general vicinity of the NW 1/16 corner, one an iron pipe used as the NW 1/16 corner in survey M 56-14, the other an iron pipe with concrete base, found out of ground, probably used as the NW 1/16 corner in survey CS 51/252. No other monuments or bearing trees found near vicinity of the NW 1/16 corner.

The iron pipe used as NW 1/16 corner in survey M 56-14 was determined to be in poor relationship with other found monuments along the 1/16 line to the East, its position was found to be over 16 feet North of line.

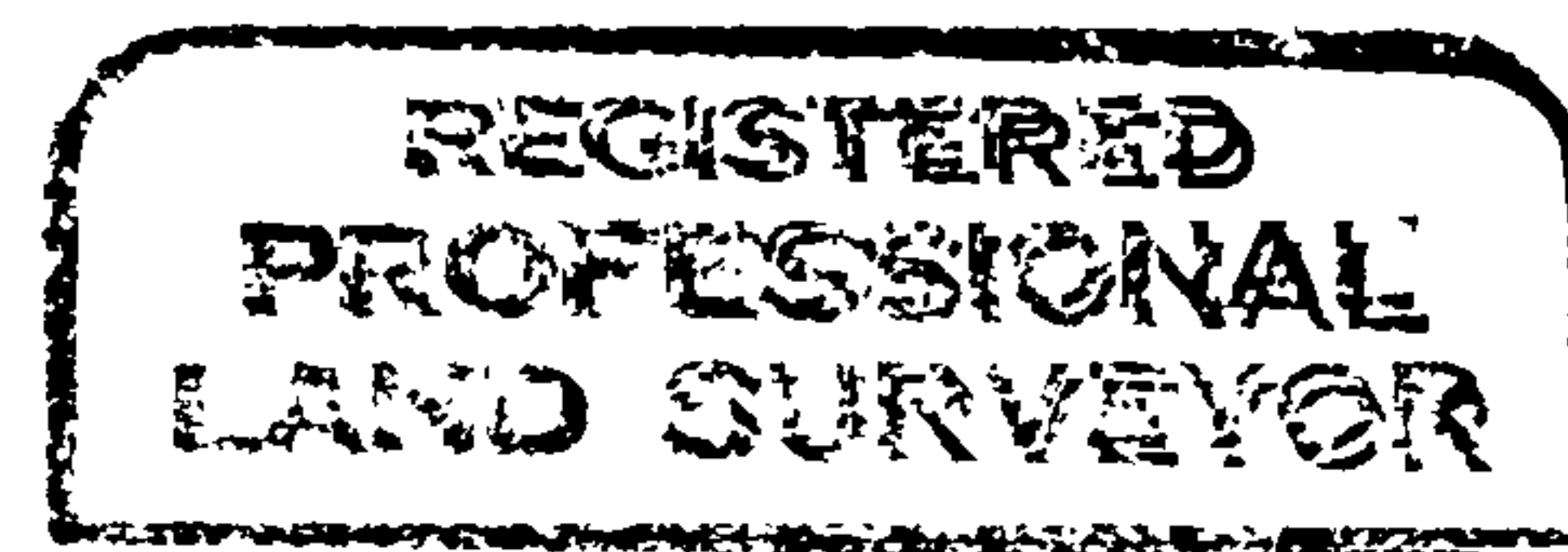
The position for the NW 1/16 corner was determined by projecting the line from the CN 1/16 corner westerly through the most westerly monument set by Hintz (CS 51/252) and using the Hintz record distance of 158.8 feet to re-establish the NW 1/16 corner. The monument set as the W 1/16 on the north line of the section in M 56-14 would also be out of position because the iron pipe used as the NW 1/16 corner was also used in determining the basis of bearing for that survey. The record bearing and distance of West 1320 feet from the found north quarter corner of Section 13 is now used to establish the W 1/16 corner of Sections 12 & 13 (U.S. Manual of Survey Inst., Ch. 13 Sec. 90).

The north and south boundaries of the parcel were determined by subdivision of section lines. The west boundary was controlled by deed record holding 50 feet measured perpendicular to the subdivision of section line. The east boundary approximately shown as the center line of Marie Creek.

The position of County Road No. 87 was determined by a random traverse between found monuments (boat spikes) P.T. 46+04.02 and P.C. 32+04.92. Then tied to main traverse at both ends. Points between P.T. 46+04.02 and P.C. 32+04.92 were calculated from Light House Road No. 87 survey by George Grubb.

Narrative of survey by:

Douglas County Surveyors Office
Room 205 Justice Building
Roseburg, OR 97470



Francis L. Ingram

