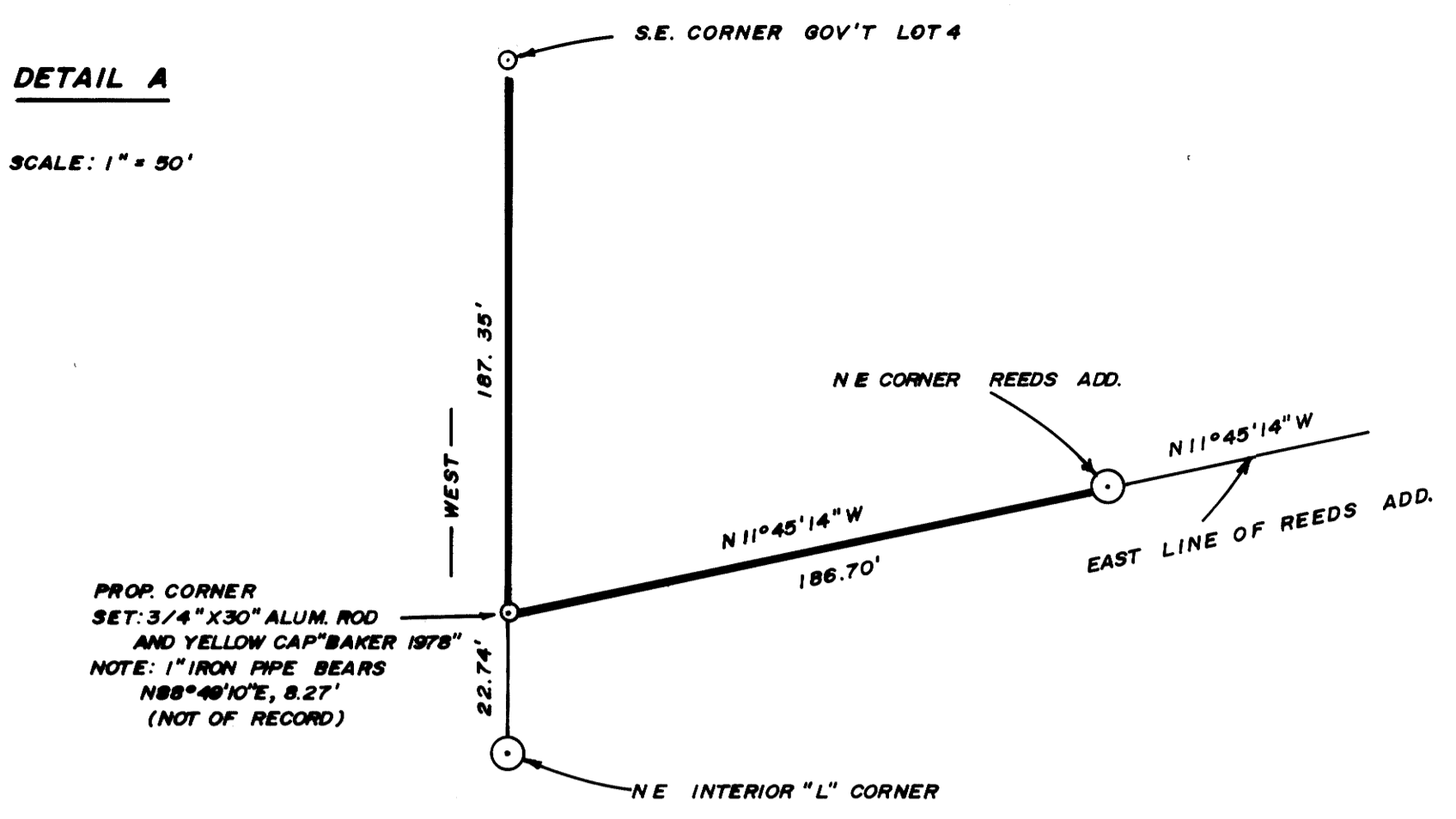


NARRATIVE

THIS SURVEY WAS MADE IN DECEMBER, 1986 AND SEPTEMBER THROUGH NOVEMBER, 1987 BY PEEL BAKER LAND SURVEYING, INC., 1262 LAWRENCE ST., SUITE 4, EUGENE, OREGON 97401. THE PURPOSE OF THIS SURVEY WAS TO LOCATE AND MARK THE PROPERTY LINES OF INTERNATIONAL PAPER COMPANY IN SECTIONS 22 AND 27, T21S, R12W, W.M. THIS WAS MADE USING A KERN K12T THEODOLITE AND DIABOL EDM. RANDOM TRANSIT TRAVERSES, WITH A MINIMUM ERROR OF CLOSURE OF 1/8,000', WERE RUN BETWEEN FOUND CORNERS USED FOR CONTROL. BEARINGS WERE BASED ON A SOLAR OBSERVATION, OFFSETS FROM THE RANDOM TRAVERSE LINE TO THE TRUE PROPERTY LINE WERE CALCULATED AND USED TO DETERMINE THE POSITION OF THE TRUE LINE. THE TRUE PROPERTY LINE WAS MARKED IN THE FIELD BY 6 FOOT ALUMINUM POSTS WITH A YELLOW "PROPERTY LINE" DECAL. THE FOLLOWING GOVERNMENT CORNERS IN SECTION 22, WERE TIED AND USED FOR CONTROL: THE MEANDER CORNER ON THE SOUTH LINE, THE SOUTHWEST AND NORTHEAST SECTION CORNERS AND THE NORTHEAST INTERIOR "L" CORNER AND THE NORTHEAST CORNER OF THE ADDISON C. @IBBS D.L.C. NO.37. ALSO TIED WERE THE SOUTHWEST AND NORTHEAST CORNERS OF THE REEDS ADDITION TO THE TOWN OF GARDINER, RE-ESTABLISHED IN COUNTY SURVEY NO. M56-52, AND EXISTING MONUMENTS AT BLOCK CORNERS AND ON THE CENTERLINE OF SECOND STREET AND THESE CORNERS WERE USED TO ESTABLISH BLOCK CORNERS IN BLOCKS 26, 27, AND 28, AND AROUND PROPERTY OWNED BY THE CITY OF REEDSPORT (BOOK 685, PAGE 24, DOUGLAS COUNTY DEED RECORDS). THE FLAGSTAFF CORNER (INITIAL POINT FOR THE TOWN OF GARDINER) AND THE EASTERLY LINE OF HIGHWAY 101 AND THE SOUTHERLY LINE OF PITT STREET WERE ALSO USED FOR CONTROL. THE EAST 1/16 CORNER ON THE NORTH LINE OF SECTION 22 WAS SET 20 CHAINS WESTERLY AND ON A LINE BETWEEN THE NORTHEAST SECTION CORNER AND A 3/4" IRON PIPE (NOT OF RECORD) AT THE INTERSECTION OF THE NORTH LINE OF SECTION 22 AND THE EAST LINE OF D.L.C. NO.37 (SEE C.S. 98-170). THE EAST 1/4 CORNER OF SECTION 22 WAS DETERMINED (NOT SET) AT MIDPOINT BETWEEN THE SOUTHWEST AND NORTHEAST SECTION CORNERS. THE CENTER-EAST 1/16 CORNER WAS DETERMINED (NOT SET) 20 CHAINS WESTERLY AND ON A MEAN BEARING BETWEEN THE NORTH AND SOUTH LINES OF SECTION 22. CORNERS "A" AND "B" WERE SET AT DEED DISTANCES AND USING DEED ANGLES (BOOK 109, PAGE 186, DOUGLAS COUNTY DEED RECORDS) AND CORNER "C" WAS SET AT THE INTERSECTION OF THE SOUTHERLY DEED LINE AND EAST LINE OF GOVERNMENT LOT 6. THE SOUTHWEST CORNER OF GOVERNMENT LOT 4 WAS SET AT THE INTERSECTION OF THE NORTH-SOUTH CENTERLINE OF THE NORTHEAST 1/4 AND A LINE RUNNING EAST FROM THE NORTHEAST INTERIOR "L" CORNER. CORNER "D" WAS SET AT THE INTERSECTION OF A NORTHERLY EXTENSION OF THE EASTERLY LINE OF THE TOWN OF GARDINER AND A LINE RUNNING EAST FROM THE NORTHEAST INTERIOR "L" CORNER (BOOK 206, PAGE 471, DOUGLAS COUNTY DEED RECORDS). ALL OTHER CORNERS WERE SET IN ACCORDANCE TO DEED RECORDS. ALL CORNERS SET IN THIS SURVEY WERE 3/4"x30" ALUMINUM RODS AND YELLOW PLASTIC CAPS, MARKED "BAKER 1978" UNLESS OTHERWISE NOTED.

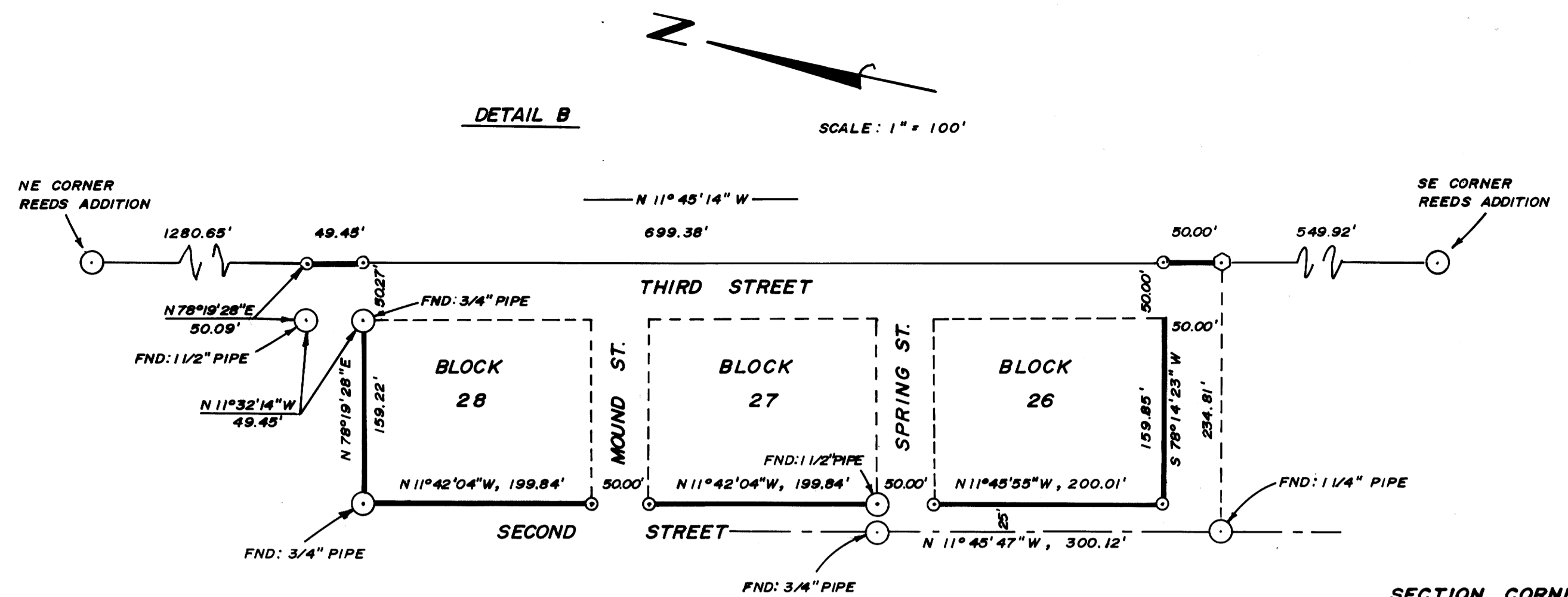
DETAIL A

SCALE: 1" = 50'



DETAIL B

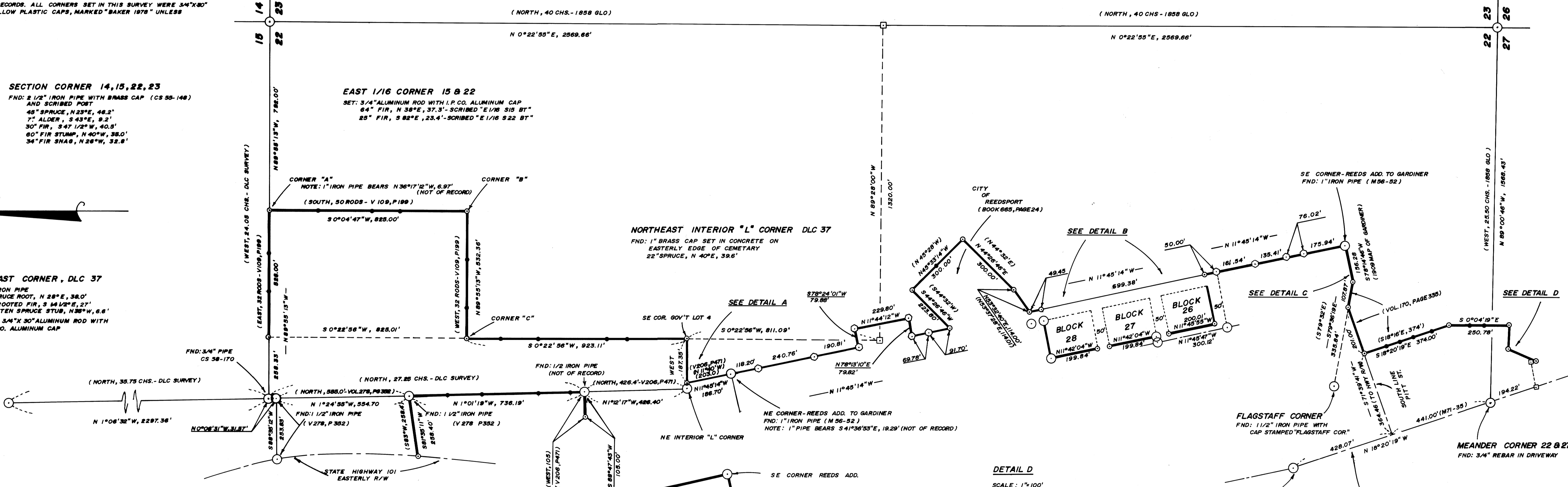
SCALE: 1" = 100'



SECTION CORNER 22, 23, 26, 27
 FND: 1 1/2" IRON PIPE WITH IRON CAP
 52" SPRUCE, N 50 1/2° E, 72.7'
 42" SPRUCE, S 57 1/2° E, 33.8'
 18" ALDER, S 40° W, 58.8'
 12" HEMLOCK, N 93 3/4° W, 12.3'

SECTION CORNER 14, 15, 22, 23
 FND: 2 1/2" IRON PIPE WITH BRASS CAP (CS 55-148) AND SCRIBED POST
 48" SPRUCE, N 23° E, 48.2'
 7" ALDER, S 43° E, 8.2'
 30" FIR, S 47 1/2° W, 40.5'
 60" FIR STUMP, N 40° W, 38.0'
 34" FIR 3NAB, N 28° W, 32.8'

EAST 1/16 CORNER 15 & 22
 SET: 3/4" ALUMINUM ROD WITH I.P.CO. ALUMINUM CAP
 54" FIR, N 38° E, 37.3' - SCRIBED "E 1/16 S 15 BT"
 25" FIR, S 82° E, 23.4' - SCRIBED "E 1/16 S 22 BT"



BASIS OF BEARING: SOLAR OBSERVATION

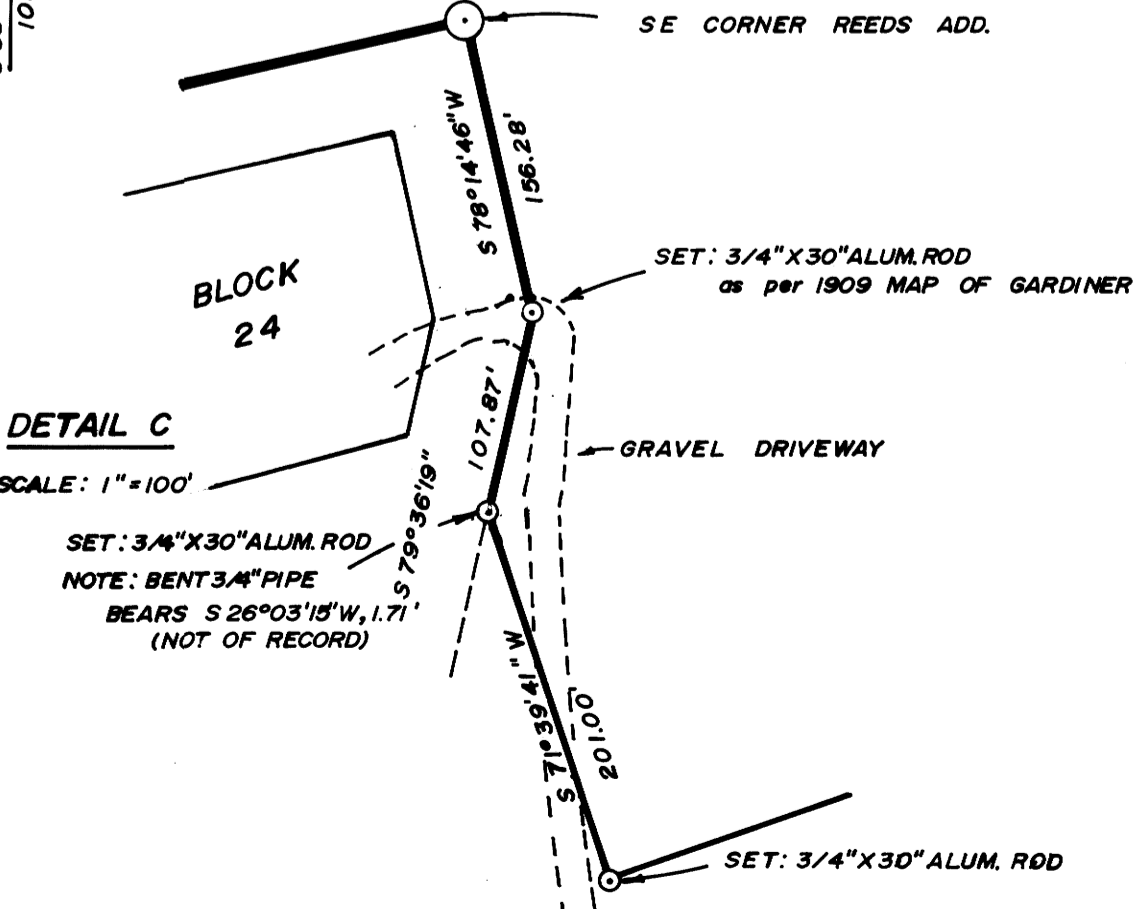
SCALE: 1" = 200'

- CORNERS FOUND
- CORNERS SET IN THIS SURVEY
- POSTED PROPERTY LINE
- 6 FOOT ALUMINUM PROPERTY LINE POSTS
- STATE HIGHWAY 101 R/W
- () RECORD DATA - DEED OR SURVEY
- LINE MONUMENTS (IRON PIPES) SET IN SURVEY M56-52 APPROXIMATELY (+0.15) ON LINE
- POINTS DETERMINED (NOT SET)

REGISTERED PROFESSIONAL LAND SURVEYOR
 DANIEL W. BAKER
 JULY 18, 1983

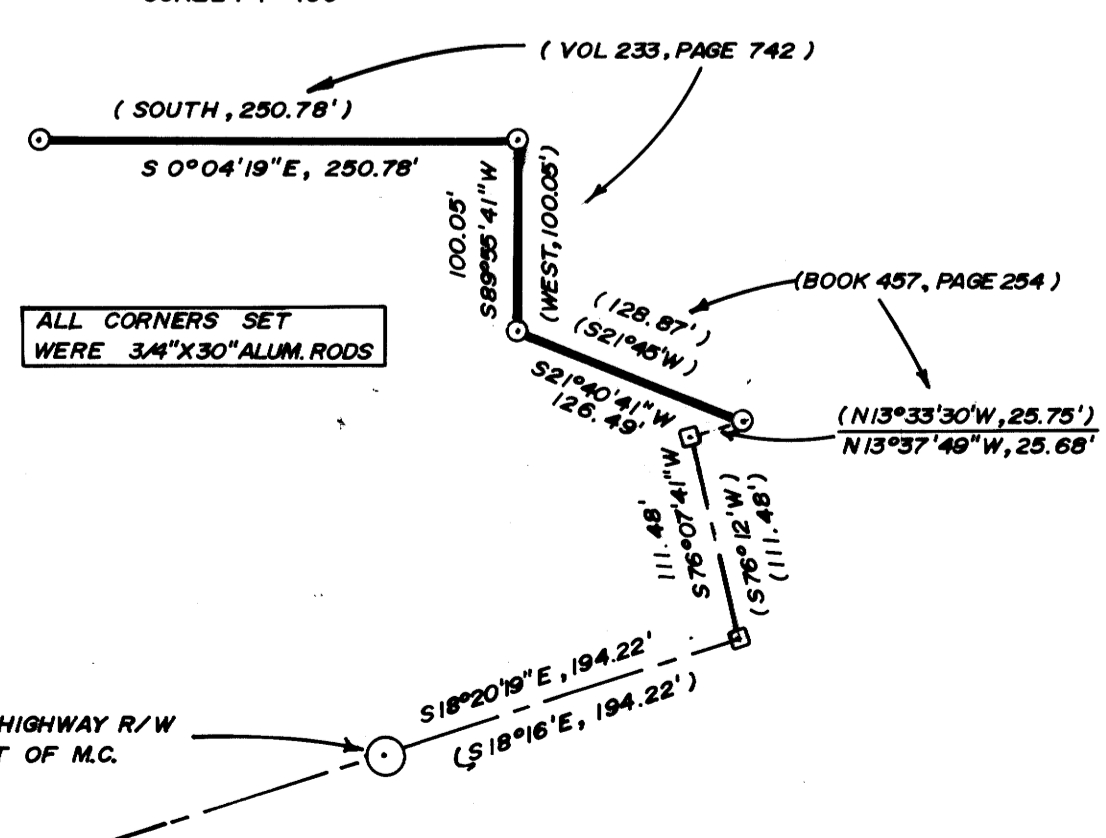
DETAIL C

SCALE: 1" = 100'



DETAIL D

SCALE: 1" = 100'



SURVEY IN EAST 1/2 SECTION 22, T21S, R12W, W.M. DOUGLAS COUNTY, OREGON

FOR INTERNATIONAL PAPER COMPANY BY PEEL BAKER LAND SURVEYING, INC. 1262 LAWRENCE ST. - SUITE 4 EUGENE, OREGON 97401

NOVEMBER 6, 1987