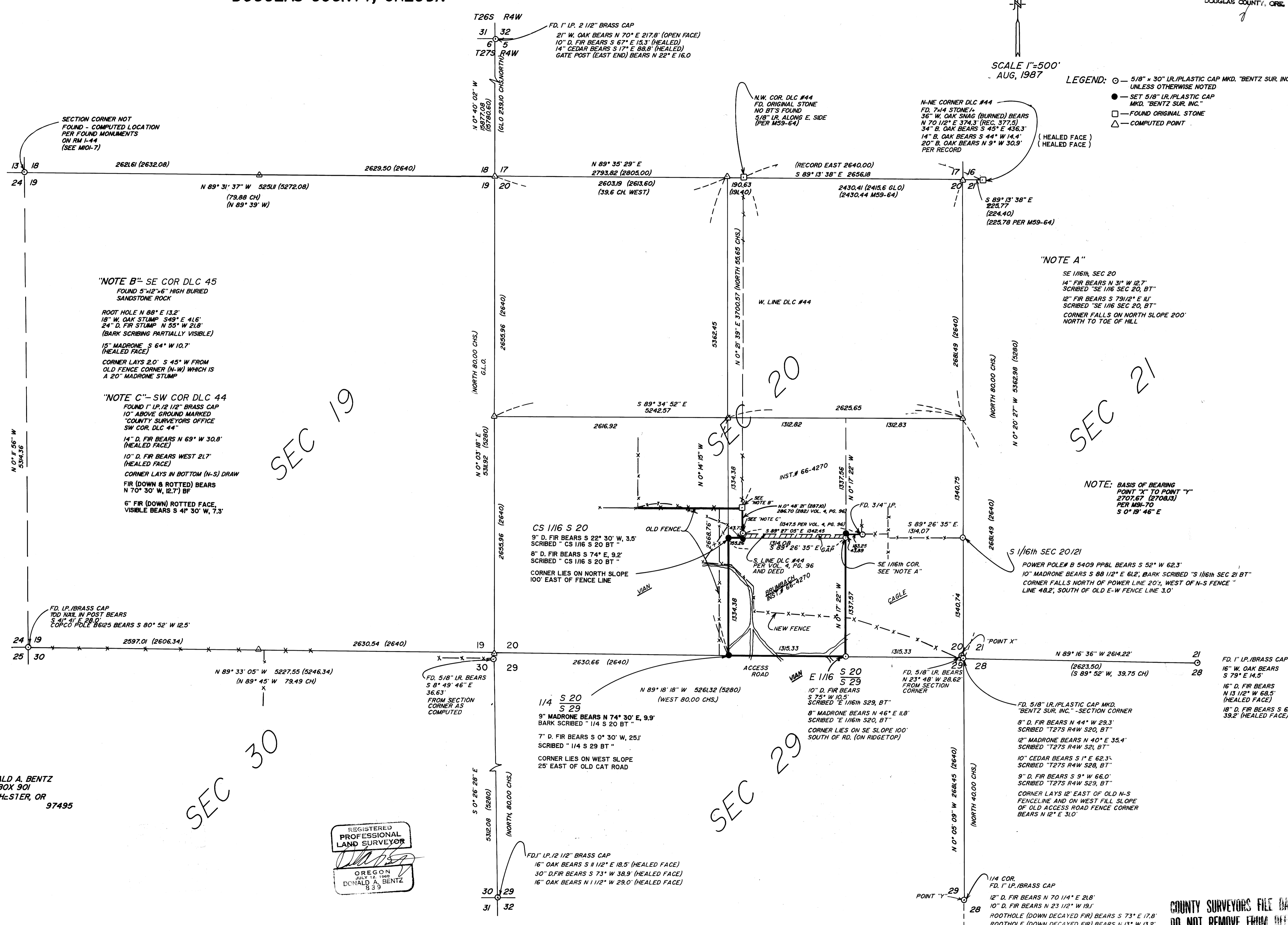


COUNTY SURVEYORS FILE DATA
DO NOT REMOVE FROM OFFICE
SURVEY FOR JOSEPH BRUMBACH IN THE SE 1/4
OF SECTION 20, T27S, R4W, W.M.
DOUGLAS COUNTY, OREGON

FILED
SEP 2 1987
COUNTY SURVEYOR
DOUGLAS COUNTY, ORE.

SCALE 1"=500'
AUG, 1987

LEGEND: ○ — 5/8" x 30" I.R./PLASTIC CAP MKD. "BENTZ SUR. INC." UNLESS OTHERWISE NOTED
● — SET 5/8" I.R./PLASTIC CAP MKD. "BENTZ SUR. INC."
□ — FOUND ORIGINAL STONE
△ — COMPUTED POINT



SECTION CORNER NOT FOUND - COMPUTED LOCATION PER FOUND MONUMENTS ON RM 1-44 (SEE MOI-7)

"NOTE B" - SE COR DLC 45
FOUND 5" x 12" x 6" HIGH BURIED SANDSTONE ROCK
ROOT HOLE N 88° E 13.2'
18" W. OAK STUMP S 49° E 41.5'
24" D. FIR STUMP N 55° W 21.8'
(BARK SCRIBING PARTIALLY VISIBLE)
15" MADRONE S 64° W 10.7' (HEALED FACE)
CORNER LAYS 2.0' S 45° W FROM OLD FENCE CORNER (N-W) WHICH IS A 20" MADRONE STUMP

"NOTE C" - SW COR DLC 44
FOUND 1" I.P./2 1/2" BRASS CAP 10" ABOVE GROUND MARKED "COUNTY SURVEYORS OFFICE SW COR. DLC 44"
14" D. FIR BEARS N 69° W 30.8' (HEALED FACE)
10" D. FIR BEARS WEST 21.7' (HEALED FACE)
CORNER LAYS IN BOTTOM (N-S) DRAW
FIR (DOWN & ROTTED) BEARS N 70° 30' W, 12.7' BF
6" FIR (DOWN) ROTTED FACE, VISIBLE BEARS S 41° 30' W, 7.3'

"NOTE A"
SE 1/16th, SEC 20
14" FIR BEARS N 31° W 12.7' SCRIBED "SE 1/16 SEC 20, BT"
12" FIR BEARS S 79 1/2° E 11' SCRIBED "SE 1/16 SEC 20, BT"
CORNER FALLS ON NORTH SLOPE 200' NORTH TO TOE OF HILL

NOTE: BASIS OF BEARING POINT "X" TO POINT "Y" 2707.67 (2708.13) PER MSH-70 S 0° 18' 46" E

POWER POLEM B 5409 PP8L BEARS S 52° W 62.3'
10" MADRONE BEARS S 88 1/2° E 61.2', BARK SCRIBED "S 1/16th SEC 21 BT"
CORNER FALLS NORTH OF POWER LINE 20', WEST OF N-S FENCE LINE 48.2', SOUTH OF OLD E-W FENCE LINE 3.0'

NARRATIVE:

A SURVEY TO MONUMENT AND FLAG PROPERTY LINES FOR JOSEPH BRUMBACH
A MONUMENT WAS SET AT THE INTERSECTION OF THE W. LINE OF E. 1/2 OF SE 1/4 OF SEC 20 & SOUTH LINE OF DLC #44.
THE SOUTH 1/4 OF SEC 20 AND THE CS 1/16th WERE ALSO MONUMENTED BY NORMAL SECTION SUBDIVISION PROCEDURES (SEE MOI-7 FOR REFERENCE SURVEY)

NOTE: GAP LEFT BY INST# 66-4270

FIELD CREW: BOB BROWNING, JIM ARTMAN

COMPUTATIONS: GREG LANG

DRAFTING: MIKE JOHNSON

EQUIPMENT: WILD T1 + REDI EDM

SURVEYED BY: DONALD A. BENTZ
P.O. BOX 901
WINCHSTER, OR 97495



COUNTY SURVEYORS FILE DATA
DO NOT REMOVE FROM OFFICE