

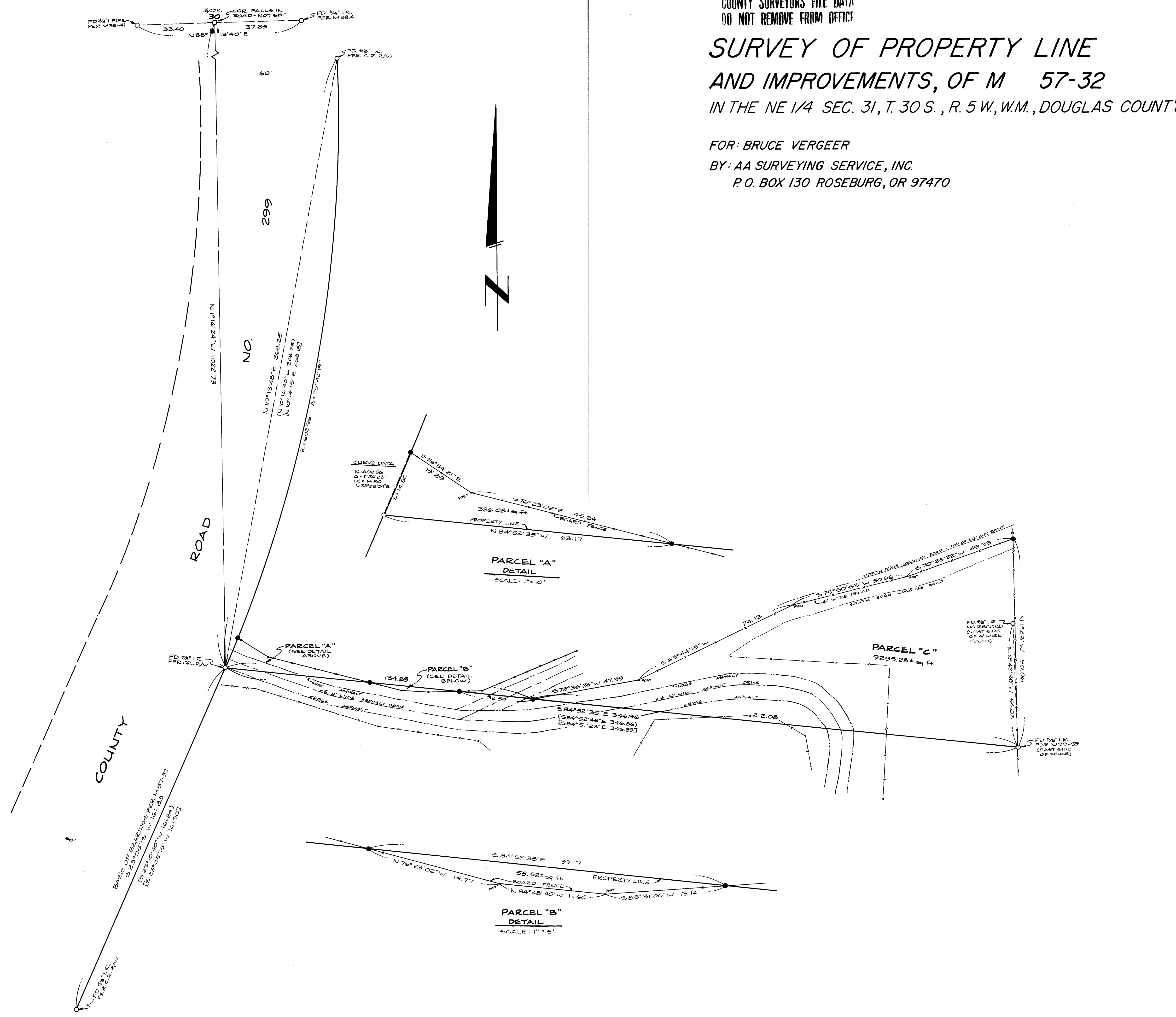
COUNTY SURVEYORS FILE DATA
DO NOT REMOVE FROM OFFICE

SURVEY OF PROPERTY LINE AND IMPROVEMENTS, OF M 57-32 IN THE NE 1/4 SEC. 31, T. 30 S., R. 5 W., W.M., DOUGLAS COUNTY, OR

FOR: BRUCE VERGEER
BY: AA SURVEYING SERVICE, INC.
P.O. BOX 130 ROSEBURG, OR 97470

MARCH 1986
SCALE: 1" = 20'

FILED *h*
MAR 3 1 1986
COUNTY SURVEYOR
DOUGLAS COUNTY, ORE.



NARRATIVE:

PURPOSE: TO TIE IN AND SHOW ON A MAP THE EXISTING IMPROVEMENTS ALONG THE DIVIDING LINE BETWEEN PARCELS LAND 2 OF M 57-32, REC. NO. 75-7553, THESE PREPARE DESCRIPTIONS AND SET MONUMENTS AS SHOWN ON THE ANNEXED MAP

PROCEDURE: I TIED IN ALL MONUMENTS AND IMPROVEMENTS AS SHOWN ON THE ANNEXED MAP THE BASIS OF BEARINGS IS AS SHOWN. INSTRUMENTS: LIETZ TM-20C, EDM TOPCON DM-C2

REGISTERED
PROFESSIONAL
LAND SURVEYOR
Eugene A. Bloom
OREGON
EUGENE A. BLOOM
492

LEGEND

- - FOUND MON. AS NOTED HEREON
- - SET 3/8" x 30" IRON ROD W/ PLASTIC CAP MKD "AA SURVEYING INC."
- — — WIRE FENCE LINE
- — — BOARD FENCE LINE
- [] M 57-32 RECORD
- () M 99-59 RECORD

COUNTY SURVEYORS FILE DATA
DO NOT REMOVE FROM OFFICE