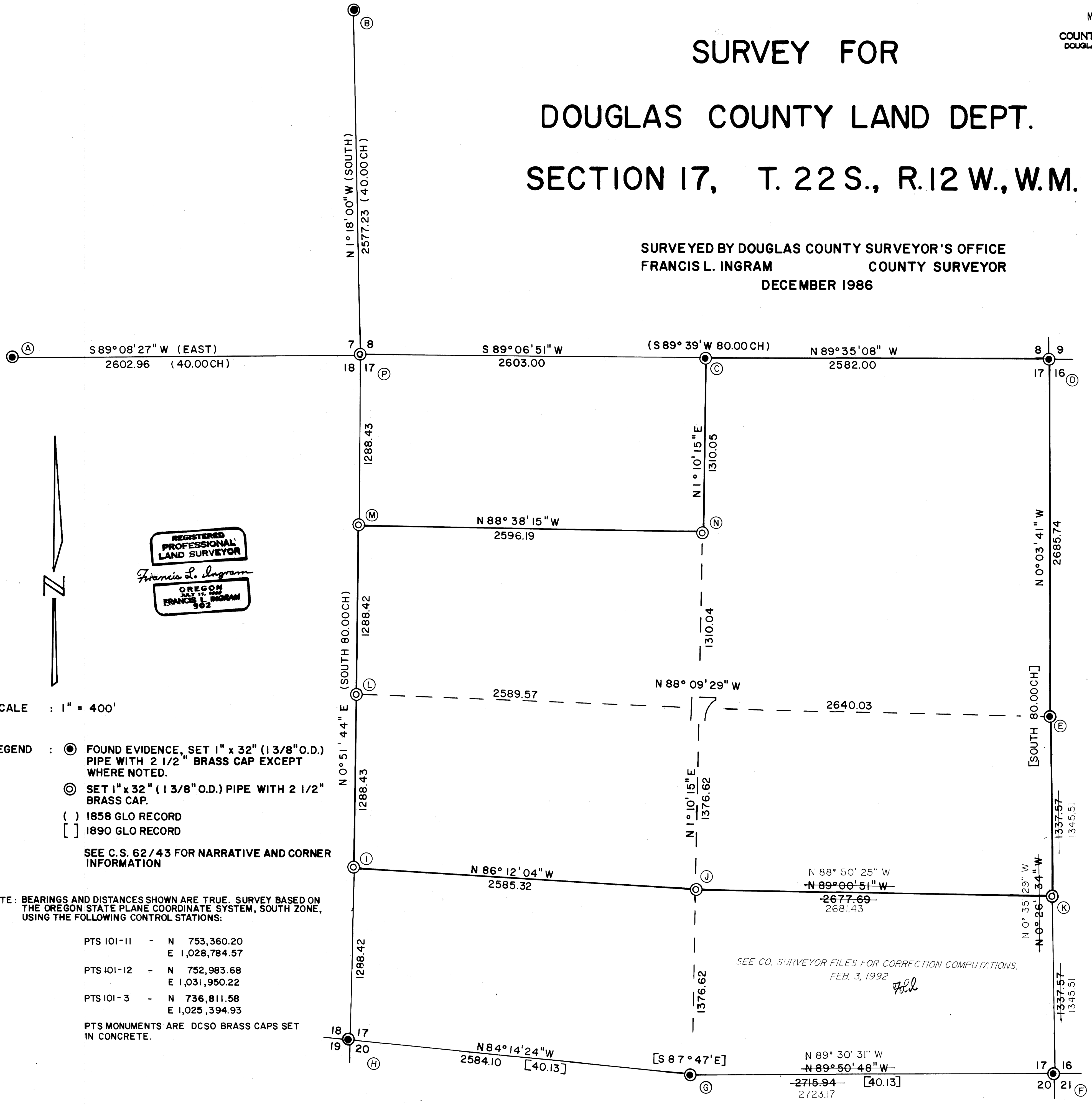


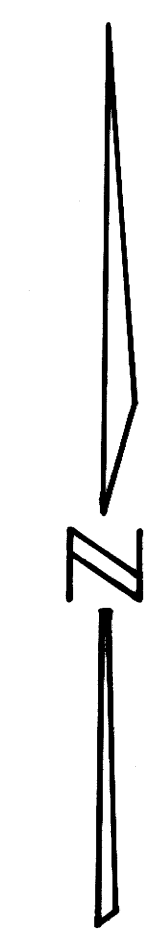
FILED *fl*  
MAY 14 1987  
COUNTY SURVEYOR  
DOUGLAS COUNTY, ORE.  
TF

# SURVEY FOR DOUGLAS COUNTY LAND DEPT. SECTION 17, T. 22 S., R. 12 W., W.M.

SURVEYED BY DOUGLAS COUNTY SURVEYOR'S OFFICE  
FRANCIS L. INGRAM COUNTY SURVEYOR  
DECEMBER 1986



REGISTERED  
PROFESSIONAL  
LAND SURVEYOR  
*Francis L. Ingram*  
OREGON  
JULY 15, 1986  
FRANCIS L. INGRAM  
302



**SUBDIVISION of SECTION 17**  
**TOWNSHIP 22 SOUTH, RANGE 12 WEST, WILLAMETTE MERIDIAN**  
**(narrative for M 101-18)**

**SURVEY FOR:** Douglas County Land Dept.  
**SURVEY BY:** Douglas County Surveyor's Office  
**DATE:** December 1986

**FILED**



MAY 14 1987

**COUNTY SURVEYOR**  
**DOUGLAS COUNTY, ORE.**

**SURVEY HISTORY:**

In 1857 under Contract No. 69, Harvey Gordon performed subdivisions in T 22 S, R 12 W that involved the west and north lines of Section 17 - most of the township was declared "rough mountainous land unfit for settlement and unsurveyed".

In 1889 under Connections Contract No. 534, William Thiel included the south and east lines of Section 17.

**GENERAL PROCEDURE:**

The purpose of this survey was to subdivide Section 17 and set specified interior corners.

**Corners found:**

- A - North quarter S.18
- B - East quarter S.7
- C - North quarter S.17
- D - Northeast S.17
- E - East quarter S.17
- F - Southeast S.17
- G - South quarter S.17
- H - Southwest S.17

**Corners set:**

- I - South sixteenth on W. line S.17
- J - Center-south sixteenth S.17
- K - South sixteenth on E. line S.17
- L - West quarter S.17
- M - North sixteenth on W. line S.17
- N - Center-north sixteenth S.17
- P - Northwest S.17

(procedure cont.)

Positions for corners set were determined in accordance with the BLM Manual of Surveying Instructions. Corners were set using the rules for single and double proportioning and the rules for subdivision of section.

We used 3rd Order Class I procedures.

**EQUIPMENT USED:**

Kern DKM2AE 1" theodolite

Lietz Sokkisha Red-1 EDM

**PERSONNEL:**

Janet R. Lundeen- party chief

Randall W. Smith

Stephen J. Flause

**BASIS of BEARINGS:**

Bearings and distances on map are true. Survey was based on the Oregon State Plane Coordinate System of 1927 South Zone, using the following control stations:

station name	coordinates	theta angle	scale factor
PTS 101-11	N 753,360.20 E 1,028,784.57	-2° 30' 44"	0.9999337
PTS 101-12	N 752,983.68 E 1,031,950.22	-2° 30' 14"	0.9999336
PTS 101-3	N 736,811.58 E 1,025,394.93	-2° 31' 09"	0.9999269

Theta angle for the computed center quarter of S.17 = -2° 29' 58"  
Scale factor for center of S.17 = 0.9999316

PTS monuments are DCSO brass caps set in concrete.

**CORNERS FOUND:**

- Compass declination for all renewals is 18 1/2° E
- All distances are taken to center of root wad if not stated otherwise.
- All tree diameters taken at breast height.

**A - NORTH QUARTER S. 18**

ACCESSORIES FOUND: (from Harvey Gordon 1857 survey)

Original 15" spruce, now 27" diam. 5 ft. high stump with partial scribing "1/4 S" bears N 7° W 13.2 ft. (also record).

Original 15" spruce, now 30" diam. 4 ft. high rotten stump with partial scribing "1/4 S" bears S 30° W 22.4 ft. (also record.)

**MONUMENT SET - procedure and description**

Procedure:

We find that the record bearings and distances fit well and set a monument at the record intersection.

Description:

1" i.d. (1 3/8" o.d.) x 32" split pipe with 2 3/8" brass cap attached and protruding 6" above ground.

Monument is stamped:

Douglas County Surveyors Office  
T 22 S R 12 W  
S7  
1/4 —  
S18  
1986

NEW ACCESSORIES:

17" spruce bears N 51° E 20.4 ft. double blazed and scribed "1/4 S7 CS BT"

8" alder bears N 50° W 4.5 ft. and barkscribed "CS 1/4 S7 BT"

18" spruce bears S 69 1/2° W 8.4 ft. double blazed and scribed "1/4 S18 CS BT"

16" spruce bears S 2° E 13.0 ft. double blazed and scribed "1/4 S18 CS BT"

Sketch of general area and accessories - see corner renewal note

Location is approximately 100 ft. East of top of ridge as record calls indicate.

July 8, 1986

Crew:

Janet Lundeen

Randy Smith

Steve Flause

**B - EAST QUARTER S.7**

MONUMENT FOUND:

No trace of the original corner or its bearing trees were found.

1" diam. iron bar protruding 4 1/2 ft. above ground at edge of marsh (source unknown) and has been used by the following surveys:

- CS 51/11 by Wm. J. Brayton in March 25 1959
- CS 51/335 by Richard J. Hintz in February 1966
- CS 63/28 by Ronald L. Durham in October 1972
- M 57-53 by R.E. Stuntzner in June 1975

**MONUMENT SET - procedure and description**

**Procedure:**


The found 1" iron bar has been used as the quarter corner for nearly 30 years and it fits the original calls reasonably well. We accept the iron bar as the corner.

**Description:** We leave the iron bar in place, as no other monument would be as stable. We set a split pipe monument as a bearing object as follows:

1" i.d. (1 3/8" o.d.) x 32" split pipe with 2 3/8" brass cap attached and protruding 4" above ground

**Monument is stamped:**

Douglas County Surveyors Office

BO 1  
N 30 E  
  
42.8  
1986

**NEW ACCESSORIES:**

18" spruce bears N 74° W 49.3 ft. and scribed "1/4 S7 CS BT" in a double blaze

6" alder bears N 83° W 5.7 ft. and barkscribed "1/4 S7 CS BT"

6" alder bears S 83° E 3.2 ft. and barkscribed "1/4 S8 CS BT"

BO 1 bears S 30° W 42.8 ft. and marked as above

1" iron pipe bears S 88 1/4° W 213.97 ft. (M57-53 rec. West 214.01

Sketch of general area and accessories - see corner renewal note

August 11, 1986

**Crew:**

Janet Lundeen

Steve Flause

Randy Smith

**C - NORTH QUARTER S.17**

Found as described in DCSO Corner Renewal No. 155 (April 1982)

**D - NORTHEAST S.17**

Found as described in DCSO Corner Renewal No. 170 (October 1982)

**E - EAST QUARTER S.17**

**ACCESSORIES FOUND:** (from William Thiel 1889 survey)

Original 10" hemlock fallen and out of position, now 16" with scribing "BT" bears S 53° E 23.8 ft. (also record). Partial root wad still visible and in position. Base of fallen tree bears N 9° E 8 ft. from the root wad.

Original 36" spruce, now 48" rotted stump 5 ft. high with partially rotted out blaze bears N 86° W 20.5 ft. (also record). No scribing found.

**MONUMENT SET - procedure and description**

**Procedure:**

As the location of the fallen hemlock was obvious, we determined a position by distance intersection. This position agreed with the record bearing also.

**Description:**

1" i.d. (1 3/8" o.d.) x 32" split pipe with 2 3/8" brass cap attached.

Monument is stamped:

Douglas County Surveyors Office  
T 22 S  
S17 | S16  
R 12 W  
1986

**NEW ACCESSORIES:**

12" spruce bears N 54 1/4° E 33.6 ft. double blazed and scribed "14 S16 CS BT"

18" douglas fir bears S 56 1/2° E 20.0 ft. double blazed and scribed "1/4 S16 CS BT"

14" douglas fir bears S 43 1/4° W 18.9 ft. double blazed and scribed "1/4 S17 CS BT"

18" hemlock bears S 83 3/4° W 37.8 ft. double blazed and scribed "1/4 S17 CS BT"

Sketch of general area and accessories - see corner renewal note

April 31, 1986

**Crew:**

Janet Lundeen  
Randy Smith  
Steve Flause

# 206

**F - SOUTHEAST S.17**

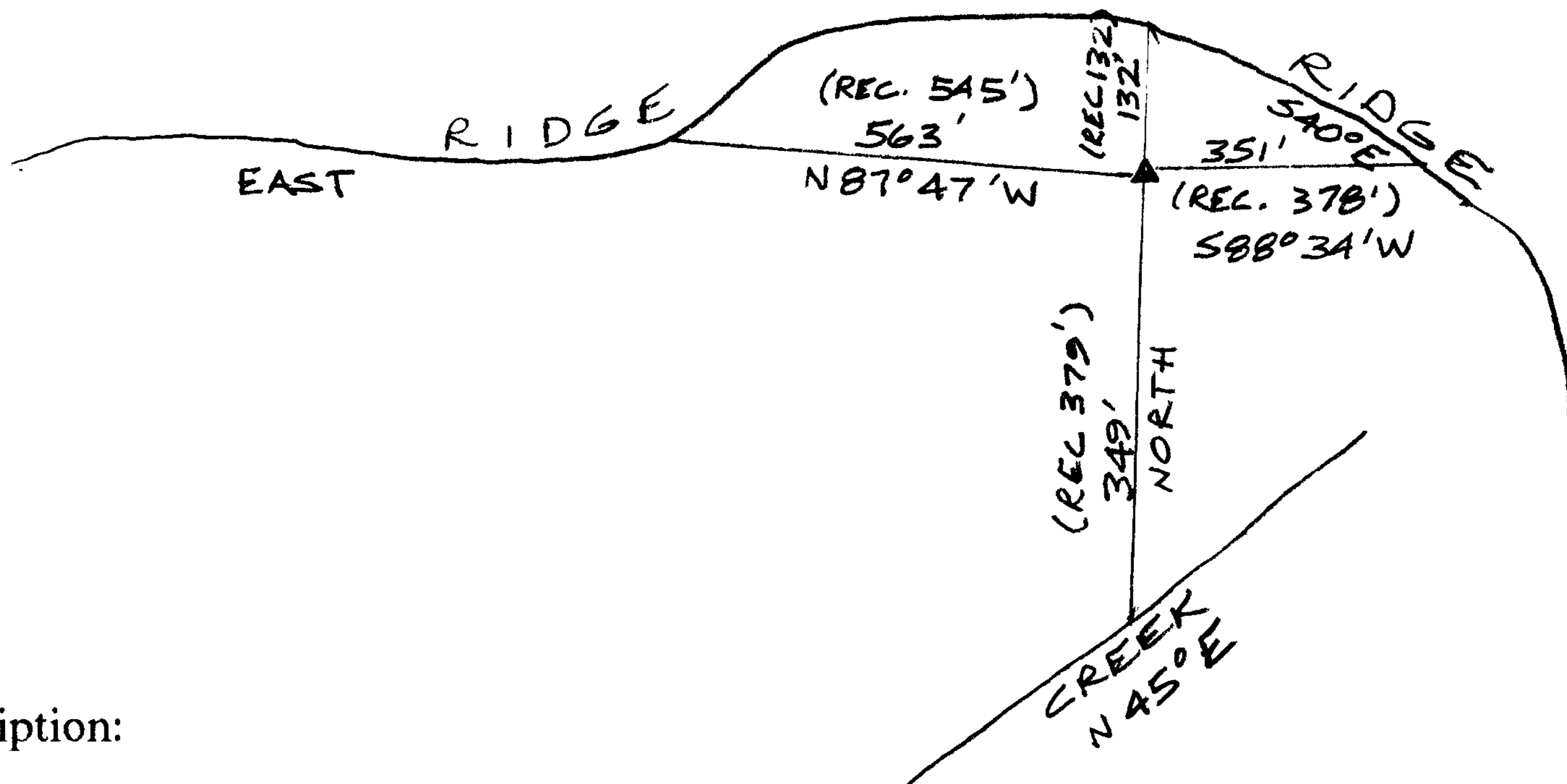
**MONUMENT SET - procedure and description**

**Procedure:**

The features called for in the original notes were tied -- the ridges to the north, east, and west of the corner and the creek (canyon) south of the corner. From this information we determined a position that fit the original calls well. We surveyed into this position and spent several days searching for evidence. We investigated trees and stumps in a 200 ft. search radius. We tied all stumps within a 50 foot radius of the corner position and found only two stumps that were of acceptable size and close to the original relationship between the original 40" and 36" spruces.

We found the relationship to be S 1°30' W 33.5 ft. If original distances were measured to center, the record relationship would be S 1°45' W 29.6 ft. If original distances were to face, the record relationship would be S 2° W 32.2 ft..

We first intersected record distances and obtained a position that did not agree well with record bearings. However, intersecting record distances altered to reflect original face measurement yielded a position that agreed well with record bearings. Sketch showing distance comparisons to original calls:



**Description:**

1" i.d. (1 3/8" o.d.) x 32" split pipe with 2 3/8" brass cap attached.

Cap protrudes 4" above mound of sandstone. Monument detail:

Douglas County Surveyors Office  
 T 22 S  
 S17 | S16  
 S20 | S21  
 R 12 W  
 1986

**ACCESSORIES FOUND: (from William Thiel 1889 survey)**

40" spruce, now 45" stump 8 ft. high bears S 38° W 19.5 ft. (Record - S 38° W 17.8 ft. face meas.)  
 No scribing found.

36" spruce, now a 44" stump 5 ft. high bears N 33° W 20.0 ft. (Record - N 33° W 18.5 ft. face meas.)  
 No scribing found.

#207

NEW ACCESSORIES:

6" redcedar bears S 20 1/4° W 5.9 ft., double blazed and scribed "T22S R12W S20 CS BT"

30 douglas fir bears N 56° W 11.1 ft., double blazed and scribed "T22S R12W S17 CS BT"

12" redcedar bears S 54 1/4° E 27.0 ft., double blazed and scribed "T22S R12W S21 CS BT"

17" hemlock bears N 68° E 21.4 ft., double blazed and scribed "T22S R12W S16 CS BT"

OTHER TIES:

Fallen cedar with line blaze bears S 71° W 29.5 ft.

Stump with line blaze on north side bears S 77 1/2° E 28.5 ft.

April 29, 1986

Crew:

Janet Lundeen

Randy Smith

Steve Flause

G - SOUTH QUARTER

ACCESSORIES FOUND: (from William Thiel 1889 survey)

Original 40" cedar (now 46" cedar snag) bears N 77° W 16.5 ft. (also record). We open and find scribing "1/4".

Original 48" spruce, now a badly rotted stump tipped out of position, stump hole bears S 70° E 7.3 ft. (also record). No blazes or scribing found.

MONUMENT SET - procedure and description

Procedure:

Corner is set at record bearing and distance from the original 40" cedar.

Description:

1" i.d. (1 3/8" o.d.) x 32" split pipe with 2 3/8" brass cap attached.

Cap protrudes 9" above ground. Mound of stones around monument.

Monument detail:

Douglas County Surveyors Office

T22S

S17

1/4 ———

S20

R12W

1986

#207

**NEW ACCESSORIES:**

10" redcedar (pistol but) bears S 40 ° E 28.1 ft. double blazed and scribed "1/4 S20 CS BT"

15" spruce bears N 84 1/4° W 16.4 ft., double blazed and scribed "1/4 S17 CS BT"

15" spruce bears S 19 1/2° W 26.7 ft., double blazed and scribed "1/4 S20 CS BT"

July 9, 1986

Crew:

Janet Lundeen

Randy Smith

Steve Flause

**H - SOUTHWEST S.17**

**ACCESSORIES FOUND:** (from Harvey Gordon 1857 survey)

Original 48" spruce, now 58" stump 7 ft. high with scribing "S 2 2" bears S 11° W 101.6 ft. (also record)

Original 24" hemlock, now a 36" badly rotted stump 2 ft. high bears N 23 1/2° E 39.6 ft. (record - N 19° E 39.6 ft.) No blazes or scribing found.

No trace of 24" alder at S 60° E 6.6 ft.

Depression (possible stump hole of 24" northwest alder) at N 59° W 17 ft.

**MONUMENT SET** - procedure and description

Procedure:

Corner is set at record bearing and distance from the 58" spruce stump. This position agreed with record bearing and distance to the 36" badly rotted hemlock stump whose center was not easily determined.

Description:

1" i.d. (1 3/8" o.d.) x 32" split pipe with 2 3/8" brass cap attached.

Monument is stamped:

*#209*

Douglas County Surveyors Office

T 22 S
S18   S17
—+—
S19   S20
R 12 W
1986

NEW ACCESSORIES:

19" spruce bears S 21° E 19.3 ft., double blazed and scribed "T22S R12W S20 CS BT"

24" spruce bears N 25 1/2° W 20.6 ft., double blazed and scribed "T22S R12W S18 CS BT"

20" douglas fir bears S 78° E 32.0 ft., double blazed and scribed "T22S R12W S19 CS BT"

28" spruce bears N 10 1/2° E 22.1 ft., double blazed and scribed "T22S R12W S17 CS BT"

Sketch of general area and accessories - see corner renewal note

May 12, 1986

Crew:

Janet Lundeen

Randy Smith

Steve Flause

#209

**I - SOUTH SIXTEENTH on WEST LINE S.17**

MONUMENT SET - procedure and description

Procedure:

Position determined by single proportioning between the west and southwest corners of S.17

Description:

1" i.d. (1 3/8" o.d.) x 32" split pipe with 2 3/8" brass cap attached and protruding 6 inches above ground

Monument is stamped:

Douglas County Surveyors Office  
T 22 S  
R 12 W  
S 1/16  
S18 | S17  
1986

NEW ACCESSORIES:

6" spruce bears N 27° E 40.3 ft., double blazed and scribed "S 1/16 S17 CS BT"

12" alder bears S 60 1/4° W 16.8 ft., double blazed and scribed "S 1/16 S18 CS BT"

14" douglas fir bears S 15 1/2° W 16.7 ft., double blazed and scribed "S 1/16 S18 CS BT"

Sketch of general area and accessories - see corner renewal note

September 19, 1986

Crew:

Janet Lundeen

Randy Smith

#212

**J - CENTER-SOUTH SIXTEENTH S.17**

**MONUMENT SET - procedure and description**

**Procedure:**

The corner position was determined by single proportioning between the south quarter and center quarter corners of S.17.

**Description:**

1" i.d. (1 3/8" o.d.) x 32" split pipe with 2 3/8" brass cap attached, protruding 1 ft. above ground and surrounded by a 1 1/2 ft. diameter mound of stones.

**Monument is stamped:**

Douglas County Surveyors Office  
T 22 S  
CS  
1/16  
R 12 W  
1986

**NEW ACCESSORIES:**

12" hemlock (pistol butt) bears N 14 1/2° E 7.0 ft., double blazed and scribed "1/16 S17 CS BT"

12" alder bears S 37° E 18.8 ft., barkscribed "1/16 S17 CS BT"

11" spruce (pistol butt) bears N 79° W 31.9 ft., double blazed and scribed "1/16 S17 CS BT"

10" spruce bears N 53° W 13.2 ft., double blazed and scribed "1/16 S17 CS BT"

Sketch of general area and accessories - see corner renewal note

Location and comments: corner lies on steep northeast slope approximately 75 ft. above a draw bottom running northwest.

December 10, 1986

**Crew:**

Janet Lundeen  
Randy Smith  
Steve Flause

**J - CENTER-SOUTH SIXTEENTH S.17**

**MONUMENT SET - procedure and description**

**Procedure:**

The corner position was determined by single proportioning between the south quarter and center quarter corners of S.17.

**Description:**

1" i.d. (1 3/8" o.d.) x 32" split pipe with 2 3/8" brass cap attached, protruding 1 ft. above ground and surrounded by a 1 1/2 ft. diameter mound of stones.

**Monument is stamped:**

Douglas County Surveyors Office  
T 22 S  
CS  
1/16  
R 12 W  
1986

**NEW ACCESSORIES:**

12" hemlock (pistol butt) bears N 14 1/2° E 7.0 ft., double blazed and scribed "1/16 S17 CS BT"

12" alder bears S 37° E 18.8 ft., barkscribed "1/16 S17 CS BT"

11" spruce (pistol butt) bears N 79° W 31.9 ft., double blazed and scribed "1/16 S17 CS BT"

10" spruce bears N 53° W 13.2 ft., double blazed and scribed "1/16 S17 CS BT"

Sketch of general area and accessories - see corner renewal note

Location and comments: corner lies on steep northeast slope approximately 75 ft. above a draw bottom running northwest.

December 10, 1986

**Crew:**

Janet Lundeen  
Randy Smith  
Steve Flause

**K - SOUTH SIXTEENTH on EAST LINE S.17**

**MONUMENT SET - procedure and description**

**Procedure:**

Monument set at single proportionate distance between the East quarter corner and the Southeast corners of S.17.

**Description:**

1" i.d. (1 3/8" o.d.) x 32" split pipe with 2 3/8" brass cap attached - monument protrudes 1 foot above ground and is surrounded by a 2 foot diameter mound of stone.

**Monument is stamped:**

Douglas County Surveyors Office  
T 22 S  
S 1/16  
S17 | S16  
R 12 W  
1986

**NEW ACCESSORIES:**

13" spruce bears N 1/2° E 44.0 ft. and is scribed "S 1/16 S16 CS BT" on a double blaze.

8" spruce bears S 8 1/2° E 67.2 ft. and is scribed "S 1/16 S16 CSBT" on a double blaze.

19" alder bears N 79° E 24.3 ft. and is barkscribed "S 1/16 S16 CS BT".

22" alder bears S 12° W 21.4 ft. and is scribed "S 1/16 S17 CS BT" on a double blaze.

Sketch of general area and accessories - see corner renewal note

Location and comments: corner is near bottom of very steep southeast slope and is approximately 15 ft. higher than a small creek running northeast

September 9, 1986

**Crew:**

Janet Lundeen  
Randy Smith  
Steve Flause

**L - WEST QUARTER S.17**

**MONUMENT SET - procedure and description**

**Procedure:**

Position was determined by single proportioning between the southwest and northwest corners of S.17.

**Description:**

1" i.d. (1 3/8" o.d.) x 32" split pipe with 2 3/8" brass cap attached, protruding 8 inches above ground and surrounded by a 2 ft. diam. mound of stones.

**Monument is stamped:**

Douglas County Surveyors Office  
T 22 S  
R 12 W  
1/4  
S18 | S17  
1986

**NEW ACCESSORIES:**

6" spruce bears N 75 1/4° E 44.2 ft, double blazed and scribed "1/4 S17 CS BT"

16" alder bears S 37° E 8.4 ft, barkscribed "1/4 S17 CS BT"

12" alder bears N 79 1/4° E 23.3 ft, barkscribed "1/4 S18 CS BT"

10" alder bears N 44 3/4° E 27.5 ft, barkscribed "1/4 S18 CS BT"

Sketch of general area and accessories - see corner renewal note

September 9, 1987

Crew:  
Janet Lundeen  
Randy Smith  
Steve Flause

#210

**M - NORTH SIXTEENTH on WEST LINE S.17**

**MONUMENT SET - procedure and description**

**Procedure:**

Position was determined by single proportioning between the west quarter and northwest corners of S.17.

**Description:**

1" i.d. (1 3/8" o.d.) x 32" split pipe with 2 3/8" brass cap attached and protrudes 4" above ground.

Monument is stamped:

Douglas County Surveyor  
T 22 S  
N 1/16  
S18 | S17  
R 12 W  
1986

**NEW ACCESSORIES:**

10" spruce bears N 10 1/2° W 11.0 ft., double blazed and scribed "1/16 S18 CS BT"

10" spruce bears S 57 1/2° W 25.4 ft., double blazed and scribed "1/16 S18 CS BT"

18" spruce bears S 80 1/2° E 8.6 ft. (7.5 to blaze), double blazed and scribed "1/16 S17 CS BT"

9" spruce bears N 26° E 9.8 ft., double blazed and scribed "1/16 S17 CS BT"

Sketch of general area and accessories - see corner renewal note

Location and comments: corner lies halfway down moderate slope to the northwest

September 22, 1986

**Crew:**

Janet Lundeen

Randy Smith

Steve Flause

2/15

**N - CENTER-NORTH SIXTEENTH S.17**

**MONUMENT SET - procedure and description**

**Procedure:**

Position determined by single proportioning between the center quarter and north quarter corners of S.17.

**Description:**

1" i.d. (1 3/8" o.d.) x 32" split pipe with 2 3/8" brass cap attached and protrudes 4 inches above ground.

**Monument is stamped:**

Douglas County Surveyor  
T 22 S  
R 12 W  
S17  
C-N 1/16  
1986  
Office

**NEW ACCESSORIES:**

27" spruce bears S 18° W 31.5 ft., double blazed and scribed "CN 1/16 S17 CS BT"

32" douglas fir bears N 17 1/2° W 12.3 ft., double blazed and scribed "CN 1/16 S17 CS BT"

24" spruce bears S 69° E 35.9 ft., double blazed and scribed "CN 1/16 S17 CS BT"

16" spruce bears N 44° E 83.0 ft., double blazed and scribed "CN 1/16 S17 CS BT"

Sketch of general area and accessories - see corner renewal note

Location and comments: corner lies at the east edge of a north-south creek bottom

October 21, 1986

**Crew:**

Janet Lundeen  
Randy Smith  
Steve Flause

**P - NORTHWEST S.17**

**MONUMENT SET - procedure and description**

**Procedure:**

Position determined by double proportioning between the southwest corner of S.17 and the east quarter corner of S.7 and between the north quarter corner of S.18 and the north quarter corner of S.17.

**Description:**

1" i.d. (1 3/8" o.d.) x 32" split pipe with 2 3/8" brass cap attached and protrudes 5 inches above ground

**Monument is stamped:**

Douglas County Surveyors Office  
T 22 S  
R 12 W  
S7 | S8  
—+—  
S18 | S17  
1986

**NEW ACCESSORIES:**

21" spruce bears N 13° E 7.5 ft., double blazed and scribed "T22S R12W S8 CS BT"

16" spruce bears N 11 1/2° W 34.6 ft., double blazed and scribed "T22S R12W S7 CS BT"

18" spruce bears S 27° E 21.9 ft., double blazed and scribed "T22S R12W S17 CS BT"

37" spruce bears S 21 1/2° W 35.1 ft., double blazed and scribed "T22S R12W S18 CS BT"

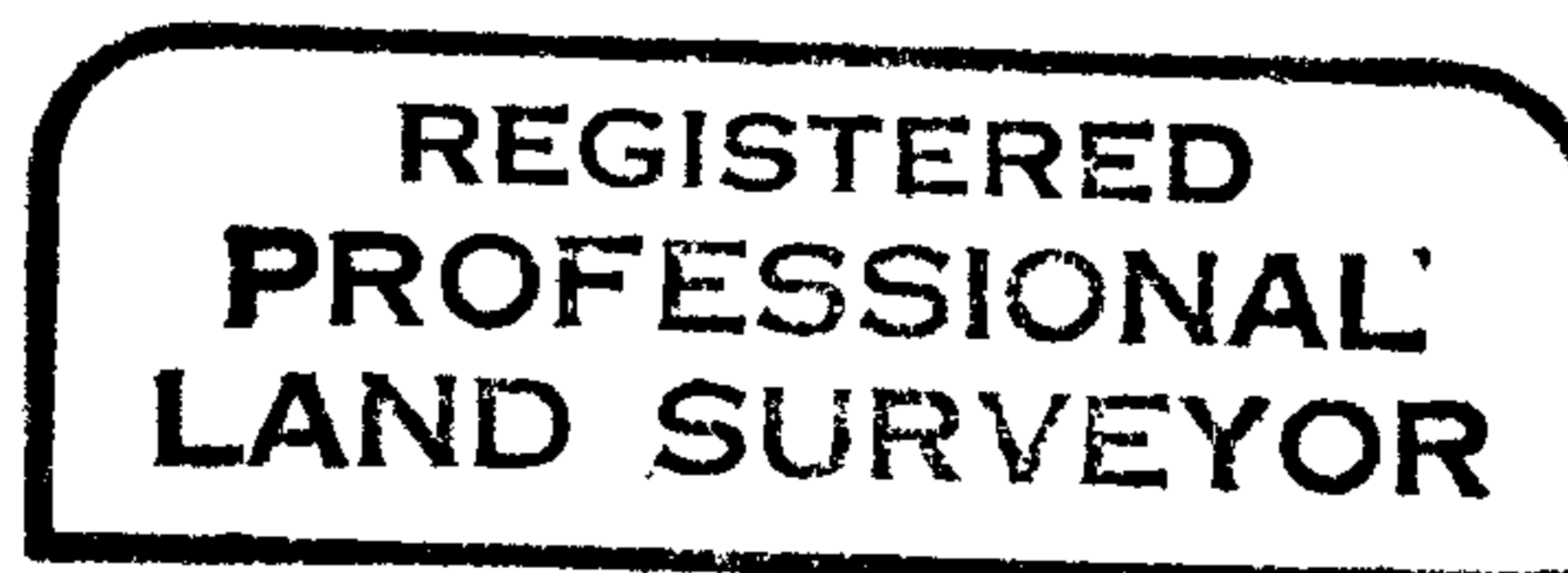
Sketch of general area and accessories - see corner renewal note

Location and comments: corner lies on a south slope

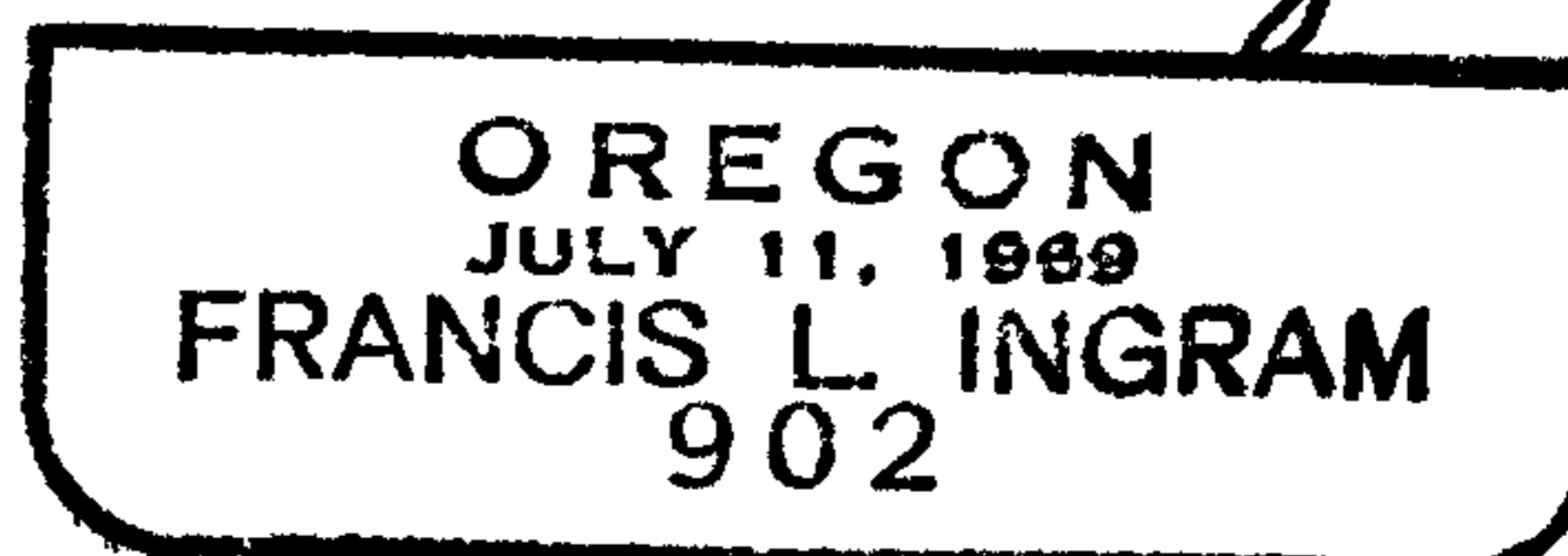
September 22, 1986

**Crew:**

Janet Lundeen  
Larry E. Monrean  
Randy Smith



*Francis L. Ingram*





RENEWAL

Monument Set (Procedure and Description)

Monument Detail

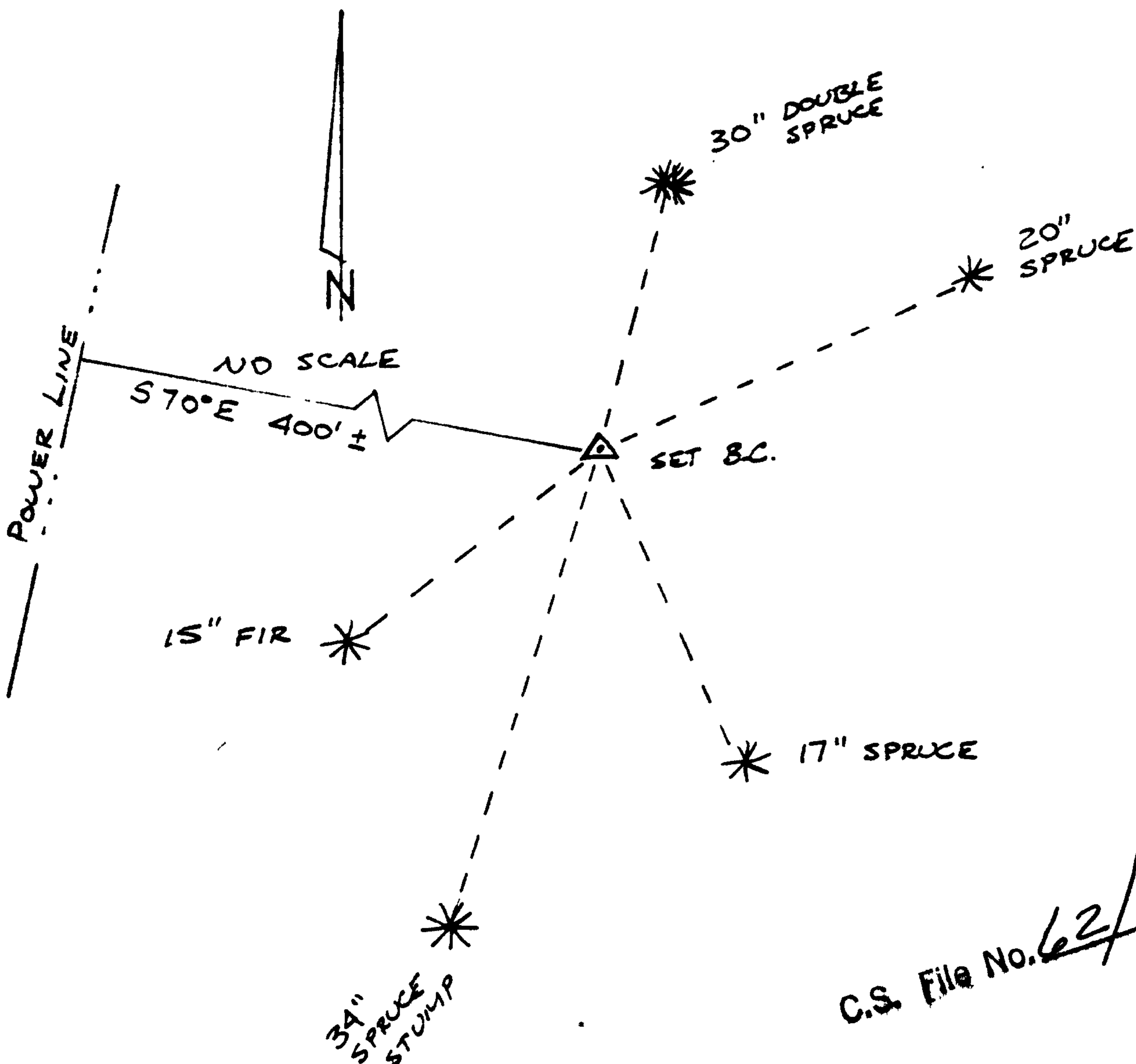
AT RECORD BEARING & DIST. FROM ORIG.  
 20" SPRUCE (N18 1/2 E 442 FT) I SET  
 A 1" x 30" IP, WITH BRASS CAP  
 ATTACHED, PROTRUDING 7" OUT OF  
 GROUND. CAP IS MARKED AS PER  
 DETAIL ON RT.

DOUG. COUNTY SURVEYORS OFFICE  
 T22S R12W  
 58  
 517 1/4  
 1982

New Accessories

30" DOUBLE SPRUCE WITH SCRIBED "1/4 S8CS BT" IN DOUBLE BLAZE BEARS N16°E 175 FT.  
 20" SPRUCE SCRIBED "1/4 S8CS BT" IN DOUBLE BLAZE BEARS N67°E 322 FT.  
 17" SPRUCE SCRIBED "1/4 S17CS BT" IN DOUBLE BLAZE BEARS S23°E 275 FT.  
 15" FIR SCRIBED "1/4 S17CS BT" IN DOUBLE BLAZE BEARS S53°W 196 FT.

Sketch of Monument, Accessories, and General Area



Location & Comments

Comp. Declin. 19° E  
 Agency DCSO  
 Party Chief LARRY E. MONREAN  
 Notekeeper Bruce E. Ziebell  
 Witnesses KAREN REED  
JOHN POWELL

Surveyor's Seal

REGISTERED  
 PROFESSIONAL  
 LAND SURVEYOR

Larry E. Monrean

OREGON  
 JULY 13, 1979  
 LARRY E. MONREAN  
 #1830 C.S. File No.

C.S. File No. 62/43

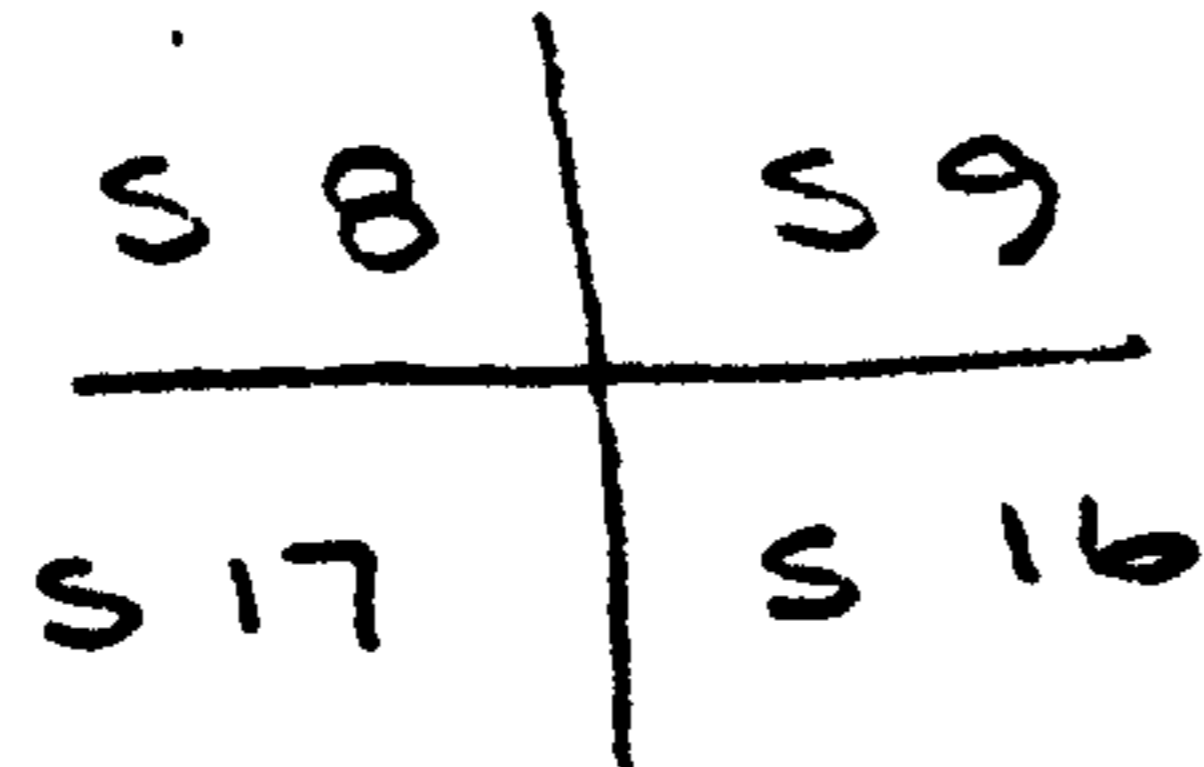
GOVERNMENT CORNER RESTORATION FORM

Township 22 S Range 12 W Sec. 8 County DOUGLAS

State OREGON Date 10-18-82 No. \_\_\_\_\_

Corner Designation

T 22 S R 12 W



- Condition Report Only
- Not Found
- Renewed
- Unrecorded
- Surveyed In
- Referenced Out

Previous Renewals NONE

MONUMENT DETAIL

Monument(s) Found: (Condition and Source)

ORIGINAL (1857 4x4 WOOD POST) NOT FOUND

#170

Accessories Found:

1. A 30 INCH SPRUCE NOW A 36" DIA DECAYED STUMP BEARING N 7° E 47<sup>5</sup> FEET. WE REMOVE PITCH XO FROM A PREVIOUSLY OPENED BLAZE AND FIND FAINT SCRIBING "T R 12" THE FIGURES R 12 BEING THE MOST LEGIBLE.

AT RECORDED BEARING AND DISTANCE ~~W~~ (S 7° W 47<sup>5</sup> FEET) FROM THE FOUND EVIDENCE WE SET A TEMPORARY POINT AND SEARCH FOR THE REMAINING B.T. EVIDENCE AS FOLLOWS.

2. A 30 INCH SPRUCE BEARING S 73° W 18<sup>5</sup> FEET, WE FIND ROTTED REMAINS OF A SPRUCE SIZE INDETERMINATE BEARS S 76° W 18<sup>0</sup> FEET. NO BLAZE OR SCRIBING FOUND.

3. A SPRUCE 18 INCH DIAM. BEARING N 70° W 50<sup>2</sup> FEET, WE FIND A BADLY DECAYED STUMP, SIZE INDETERMINATE BEARS N 70° W 45.5 FEET. NO BLAZE OR SCRIBING FOUND.

4. WE FOUND NO SIGN OF THE 5 INCH DIAM SPRUCE AT S 79° E 25<sup>1</sup> FEET.

C.S. File No. 62/43

C.S. [Signature] C

#170 ✓

RENEWAL

Monument Set (Procedure and Description)

AT THE TEMPORARY POINT NOTED AT RECORD BEARING AND DISTANCE FROM THE FOUND NE BEARING TREE STUMP WE SET A 1" X 30" IRON PIPE WITH A BRASS CAP ATTACHED AND STAMPED AS NOTED. MONUMENT PROTRUDES 10" ABOVE GROUND.

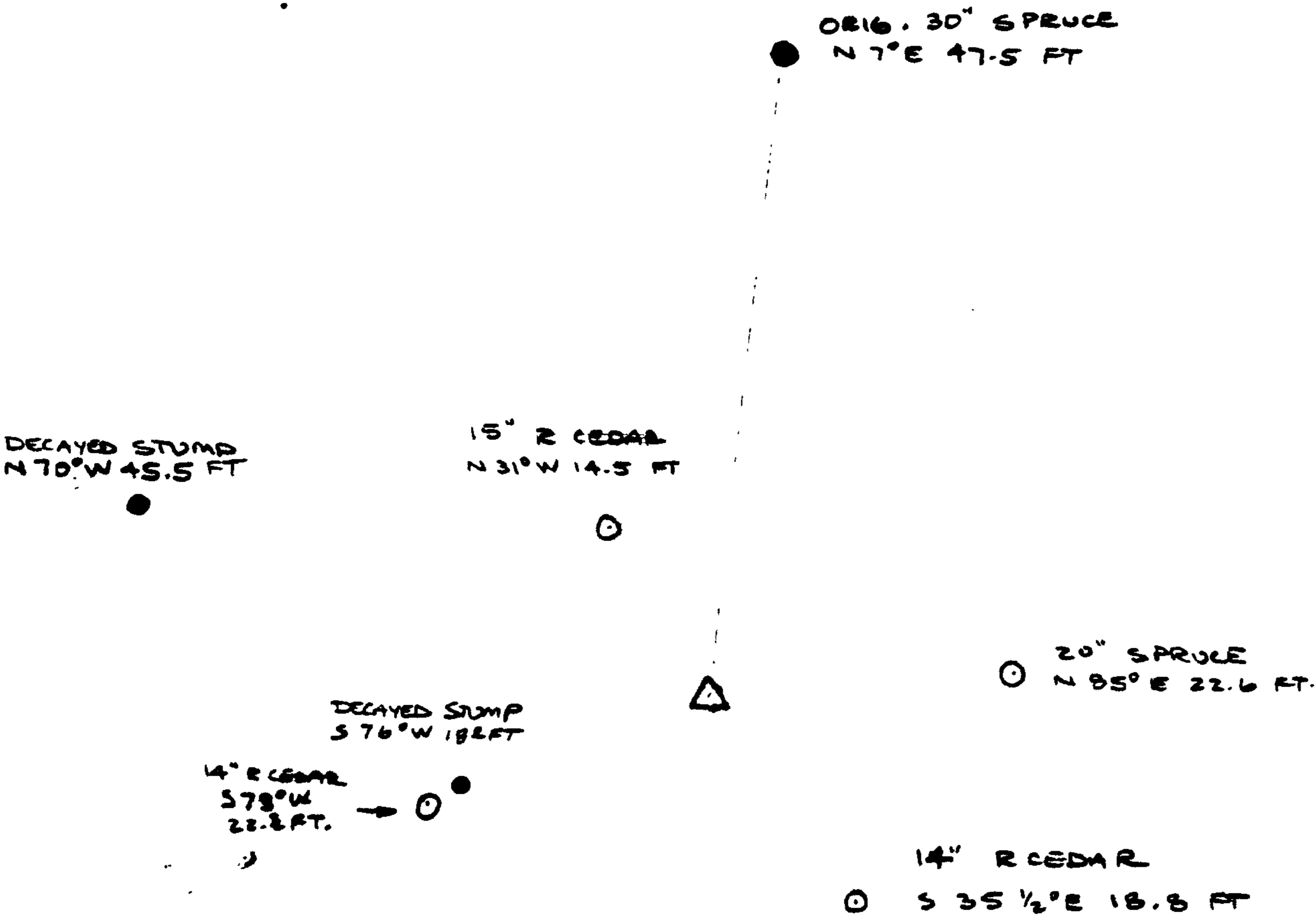
Monument Detail

DOUGLAS CO. SURVEYOR  
 T 22 S  
 S 8 | S 9  
 ---  
 S 17 | S 16  
 R 12 W  
 1982

New Accessories

1. R. CEDAR 15" DIA DOUBLE BLAZED AND SCRIBED "T22S R12W S8 CS BT" BEARS N 31° W 14.5 FEET.
2. A SPRUCE 20" DIA DOUBLE BLAZED AND SCRIBED "T22S R12W S9 CS BT" BEARS N 85° E 22.6 FEET.
3. R. CEDAR 14" DIA DOUBLE BLAZED AND SCRIBED "T22S R12W S16 CS BT" BEARS S 35 1/2° E 18.8 FEET.
4. R. CEDAR 14" DIA DOUBLE BLAZED AND SCRIBED "T22S R12W S17 CS BT" BEARS S 73° W 22.3 FEET.

Sketch of Monument, Accessories, and General Area



Location & Comments

NEW BT'S TAGGED

Comp. Declin. 19° EAST  
 Agency DOUGLAS COUNTY SURVEYOR'S OFFICE  
 Party Chief LARRY E. MONREAN  
 Notekeeper Larry T. Monrean  
 Witnesses J. M. POWELL  
T. R. FRANSENN

Surveyor's Seal

REGISTERED  
 PROFESSIONAL  
 LAND SURVEYOR

*Larry E. Monrean*

OREGON  
 JULY 13, 1979  
 LARRY E. MONREAN  
 81830

- ORIG. FD.
- NEW BT
- △ SET BRASS CAP MON.

C.S. File No. 62/43