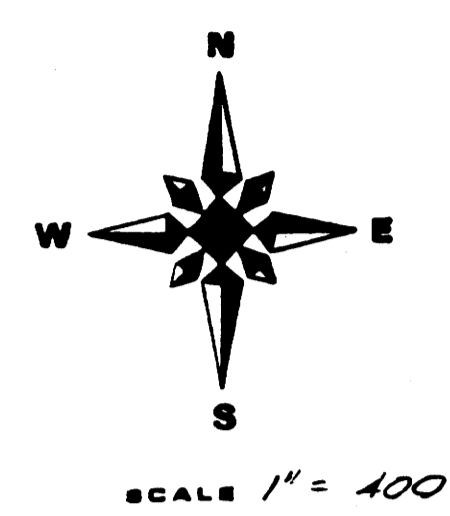
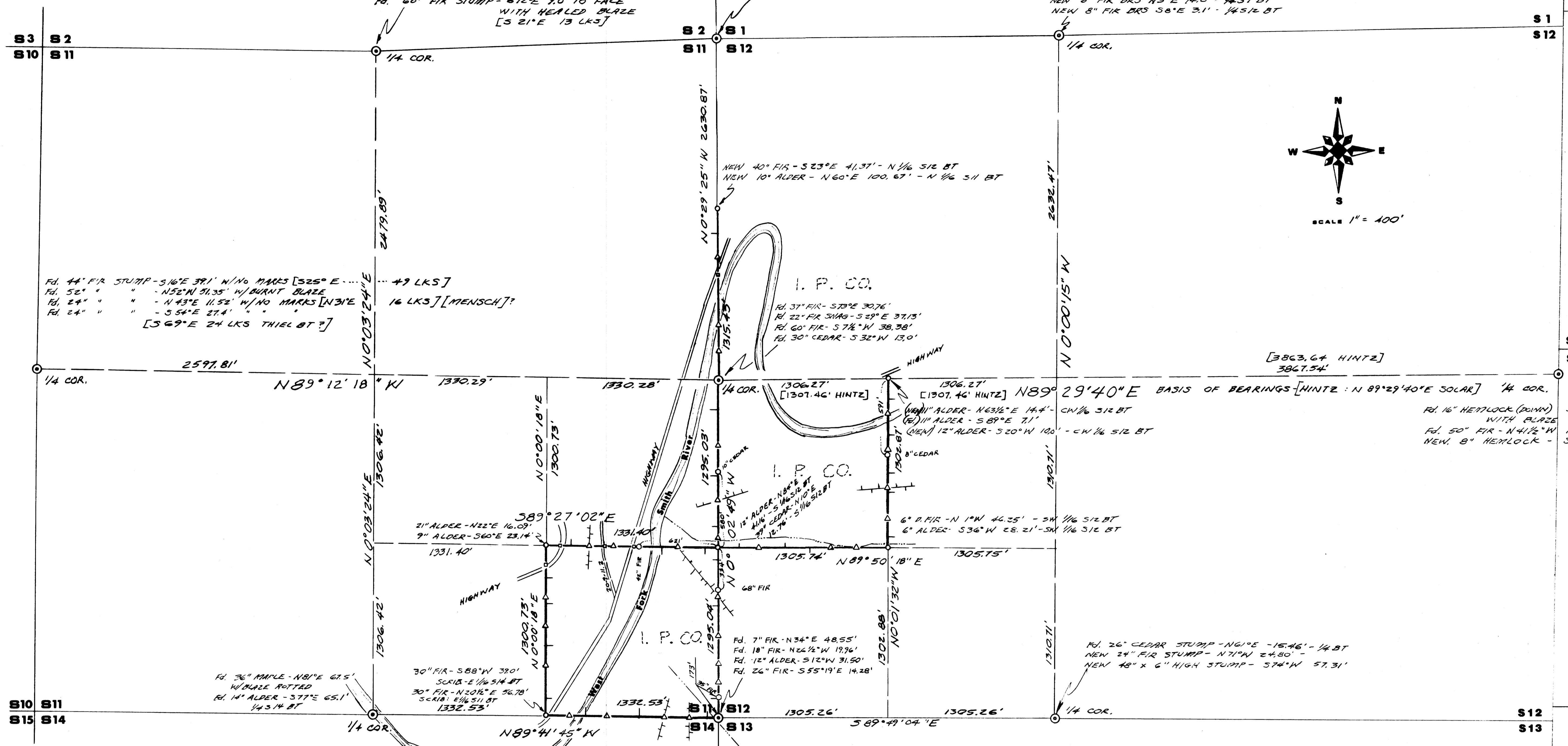


CS. File No. 63-87

ADJUSTED SURVEYORS FIELD DATA
DO NOT REMOVE FROM OFFICE

FILED
MAR 2 1987 TF
COUNTY SURVEYOR
DOUGLAS COUNTY, ORE.
TF



PROCEDURE:

Set monuments are a 3 1/2" alum. cap marked per the manual on a 5/8 x 3/8" alum. rod protruding 6". A purple magnet was buried 12 to 18" deep at the base of the monument. A 6" alum. post with attention sign was set within 2' of the monument.

Bearing trees have (2) 6 inch wide red bands painted around the tree, red painted scribed faces, 3/4" brass washer nailed between the B and T scribes, B.T. signs on both sides, a 6" steel spike nail driven in the bole as a chaining point.

The property line was flagged with red ribbon and trees blazed and blazes painted red. Property line line markers were set as located on the plat. Each marker consists of a 1/2" x 60" iron rebar driven 30" in the ground with a I.P. Co. Property Line sign attached facing I.P. property and a alum. cap attached to the top of the rebar marked with the cardinal direction and distance to the nearest corner.

Line points were located as shown on the plat and consists of a 60" long stob painted and flagged in red.

At the intersection of the property line with roads, a 6" alum. post was driven in to the fill slope of the road and a poster and I.P.Co. property line signs attached.

All posts, line points, and line markers have an orange magnet buried at its base and are referenced with a boundary sign attached to the base of a nearby tree marked with the distance and bearing from the sign to the marker.

A closed traverse was run on or near the property line with a 20" theodolite and Mac I EDM. The distance between the property line and the traverse stations were computed and then measured with a hand compass and steel tape.

NARRATIVE:

The purpose of this survey is to mark property lines as shown on the plat. Control for monumentation and marking of lines were the B.L.M. survey in 1953 and 1954 and approved in 1960, Hintz survey dated 1972, and deeds in volume 112 page 491 and volume 151 page 398, Douglas County Deed Records.

RESTORATION FORMS are on file in the County Surveyors office for corners visited and/or set.

LEGEND

- Posted Property Line
- ~ Creek
- - - Ridge
- ⊙ Found Std. BLM Cap & Pipe
- ⊙ Set 5/8" Alum. Rod with Alum. Cap marked per Manual
- Line Tree
- △ Set 1/2" x 60" Iron Rod with sign and cap and magnet
- Set 60" Stob painted and flagged red and magnet
- ⊙ Set 6" Alum. Post with location & property line signs
- [] Record data

COUNTY SURVEYORS FILE DATA
DO NOT REMOVE FROM OFFICE

REGISTERED PROFESSIONAL LAND SURVEYOR OREGON SEPTEMBER 27, 1971 DONALD L. BRANCH 1137	Project Title - Location RECORD OF SURVEY IN SECTIONS 11 & 12, T.20 S., R.9 W., W.M., DOUGLAS COUNTY, OR.
	Client INTERNATIONAL PAPER COMPANY
Date 2-3-87	Field Book No. 63
Scale Horizontal: 1" = 400' Vertical:	Project No. 86-72