

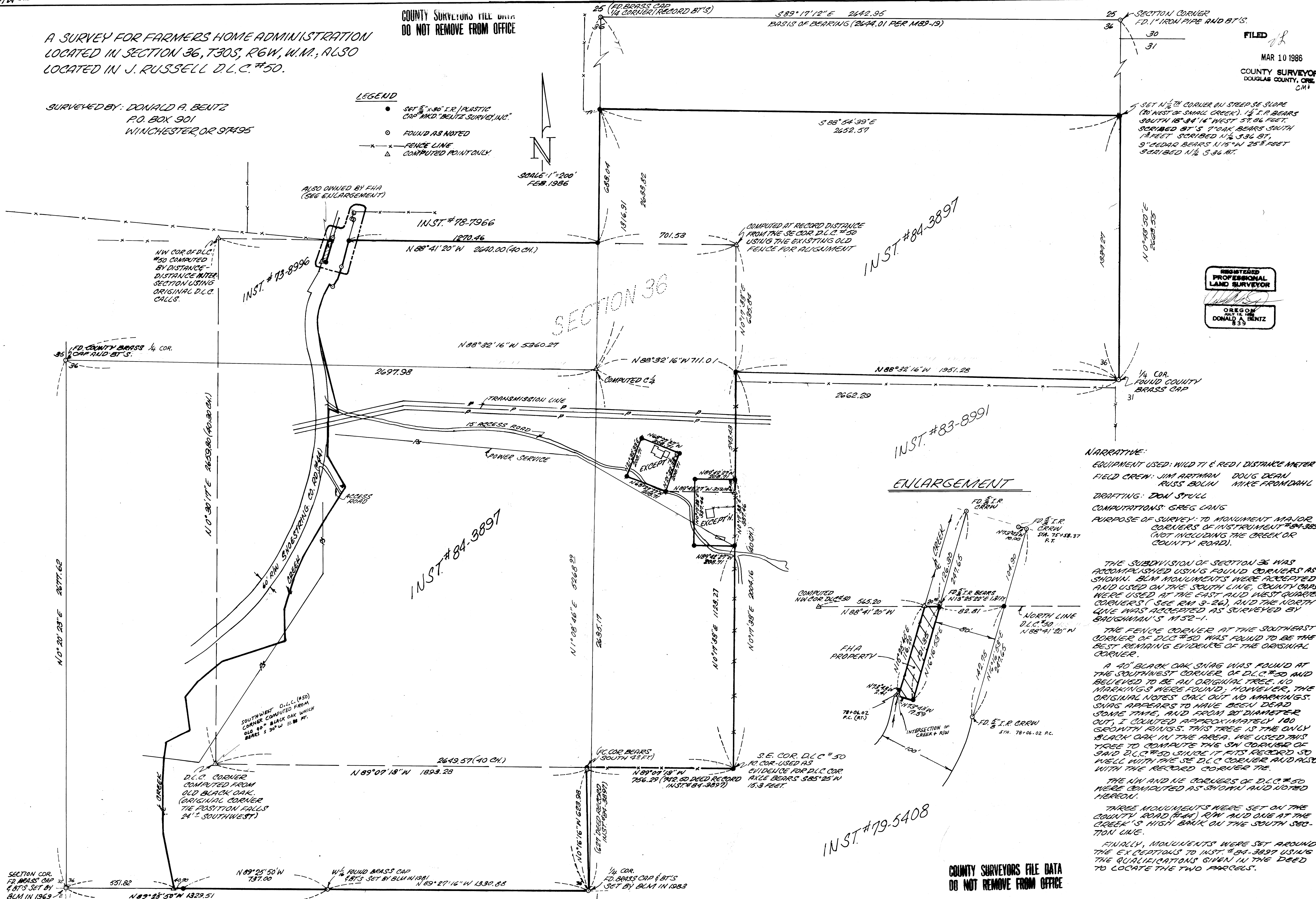
COUNTY SURVEYORS FILE DATA  
DO NOT REMOVE FROM OFFICE

A SURVEY FOR FARMERS HOME ADMINISTRATION  
LOCATED IN SECTION 36, T30S, R6W, W.M.; ALSO  
LOCATED IN J. RUSSELL D.L.C. #50.

SURVEYED BY: DONALD A. BENTZ  
P.O. BOX 901  
WINCHESTER, OR 97145

LEGEND

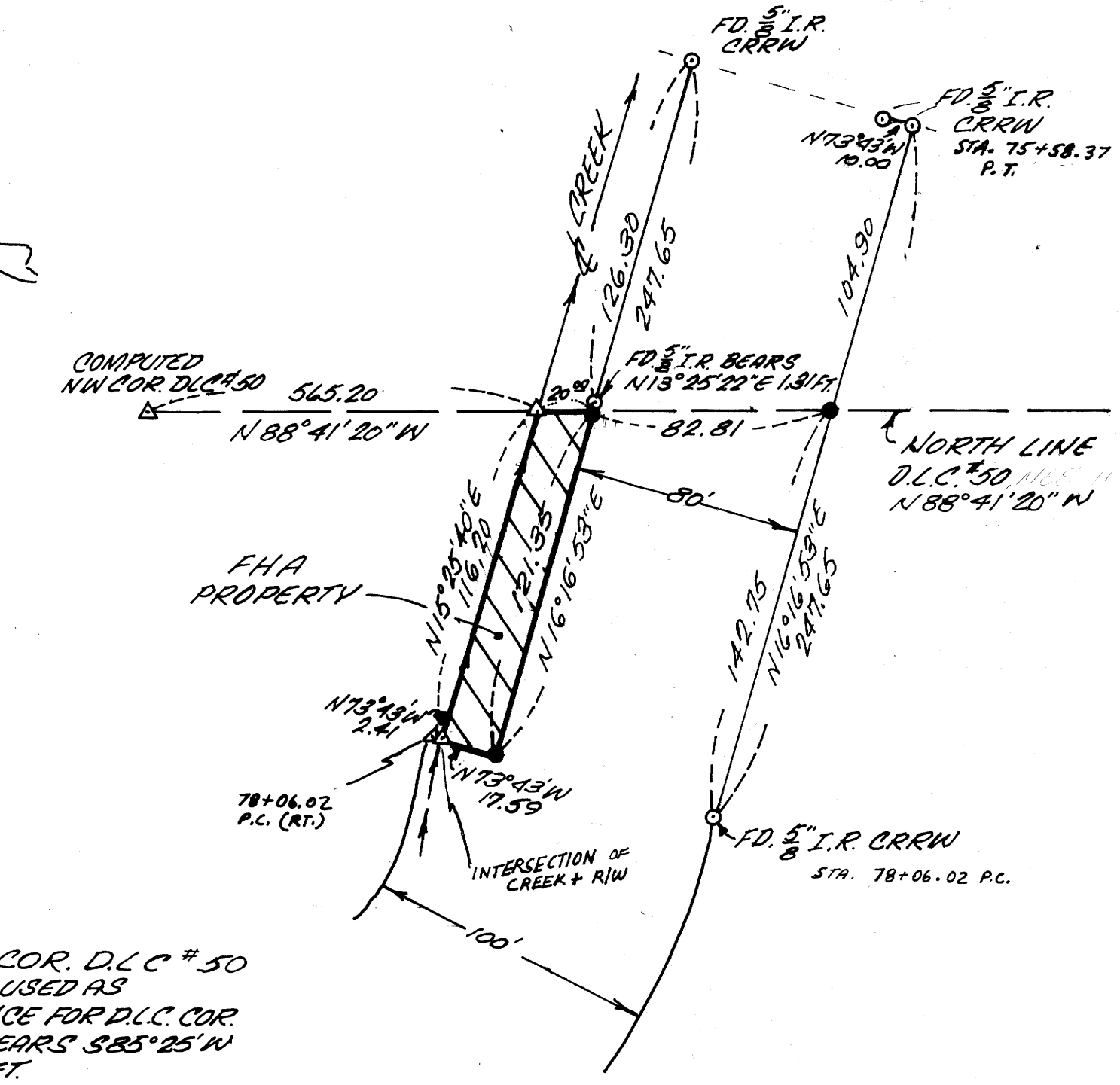
- SET 5/8" x 3/16" I.R. PLASTIC CAP MKD. 'BENTZ SURVEY, INC.'
- FOUND AS NOTED
- FENCE LINE
- △ COMPUTED POINT ONLY



FILED  
MAR 10 1986  
COUNTY SURVEYOR  
DOUGLAS COUNTY, ORE.  
C.M.



ENLARGEMENT



**NARRATIVE:**  
EQUIPMENT USED: WILD TI E RED I DISTANCE METER  
FIELD CREW: JIM ARTHMAN DOUG DEAN  
RUSS BOLIN MIKE FROMDAHL  
DRAFTING: DON STULL  
COMPUTATIONS: GREG LANG  
PURPOSE OF SURVEY: TO MONUMENT MAJOR CORNERS OF INSTRUMENT #84-3897 (NOT INCLUDING THE CREEK OR COUNTY ROAD).

THE SUBDIVISION OF SECTION 36 WAS ACCOMPLISHED USING FOUND CORNERS AS SHOWN. BLM MONUMENTS WERE ACCEPTED AND USED ON THE SOUTH LINE, COUNTY CORNERS WERE USED AT THE EAST AND WEST QUARTER CORNERS (SEE RM 3-26), AND THE NORTH LINE WAS ACCEPTED AS SURVEYED BY BAUGHMAN'S M52-1.

THE FENCE CORNER AT THE SOUTHWEST CORNER OF D.L.C. #50 WAS FOUND TO BE THE BEST REMAINING EVIDENCE OF THE ORIGINAL CORNER.

A 40" BLACK OAK SNAG WAS FOUND AT THE SOUTHWEST CORNER OF D.L.C. #50 AND BELIEVED TO BE AN ORIGINAL TREE. NO MARKINGS WERE FOUND; HOWEVER, THE ORIGINAL NOTES CALL OUT NO MARKINGS. SNAG APPEARS TO HAVE BEEN DEAD SOME TIME, AND FROM 20" DIAMETER OUT, I COUNTED APPROXIMATELY 100 GROWTH RINGS. THIS TREE IS THE ONLY BLACK OAK IN THE AREA. WE USED THIS TREE TO COMPUTE THE SW CORNER OF SAID D.L.C. #50 SINCE IT FITS RECORD SO WELL WITH THE SE D.L.C. CORNER AND ALSO WITH THE RECORD CORNER TIE.

THE NW AND NE CORNERS OF D.L.C. #50 WERE COMPUTED AS SHOWN AND NOTED HEREON.

THREE MONUMENTS WERE SET ON THE COUNTY ROAD (FHA) R/W AND ONE AT THE CREEK'S HIGH BANK ON THE SOUTH SECTION LINE.

FINALLY, MONUMENTS WERE SET AROUND THE EXCEPTIONS TO INST. #84-3897 USING THE QUALIFICATIONS GIVEN IN THE DEED TO LOCATE THE TWO PARCELS.

COUNTY SURVEYORS FILE DATA  
DO NOT REMOVE FROM OFFICE