

Resurvey And Subdivision of S 1/2 Section 22 And NW 1/4 Section 27, T 28 S, R 4 W, Willamette Meridian, Oregon

For Roseburg Resources Company
March 7, 1986

Scale: 1" = 400'

FILED
MAR 27 1986
COUNTY SURVEYOR
DOUGLAS COUNTY, ORE.

Legend

- Found Monument as Noted
- Set 3/8" IR & Alum. Cap Marked "LS 498"
- Section or Property Line
- Line Referenced to Alum. Tays
- () Record Data



Bearing based on Holts bearing on East 1/2 of line between Sec. 22 & 27

VOID
SEE M101-75

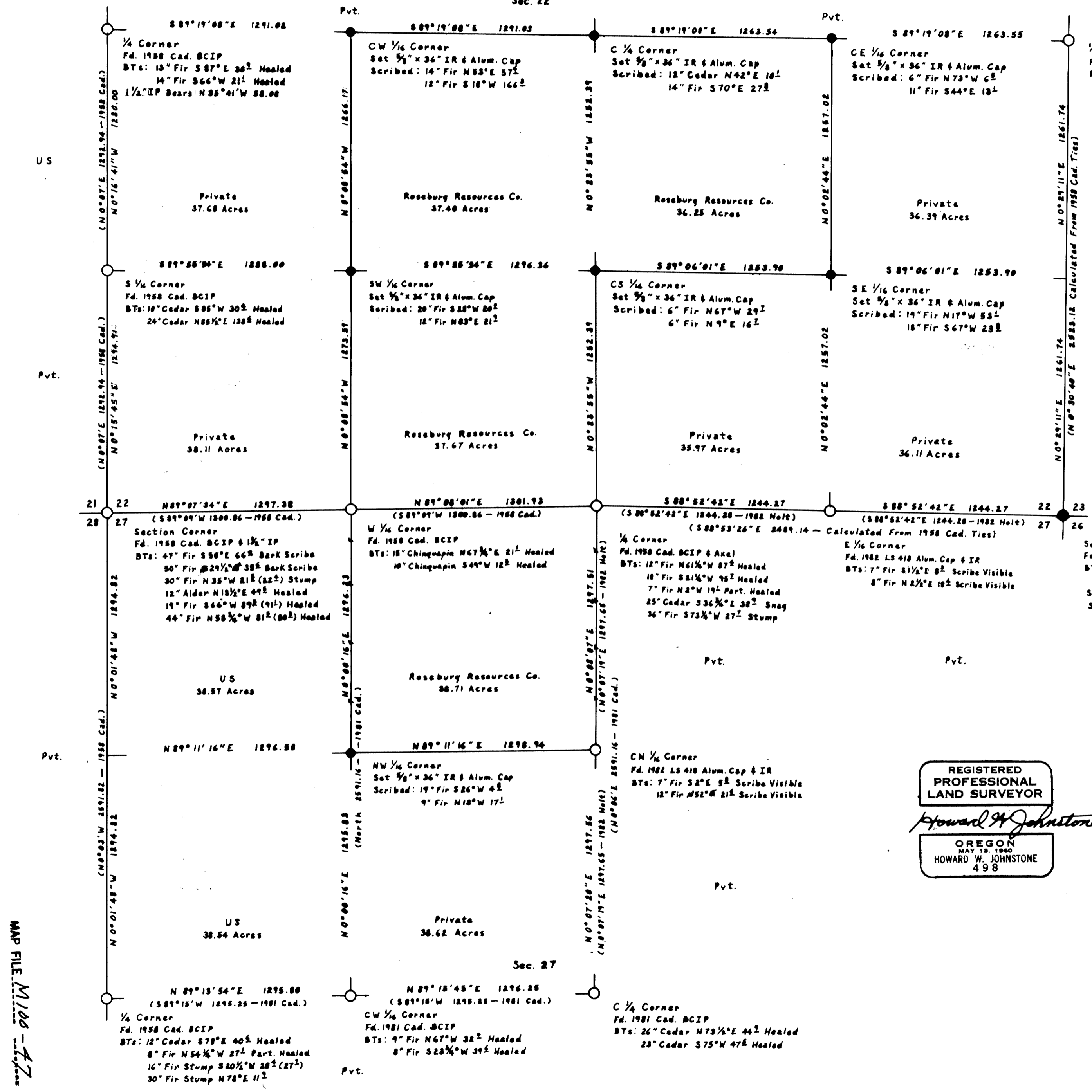
REGISTERED
PROFESSIONAL
LAND SURVEYOR

Howard W. Johnstone

OREGON
MAY 13, 1960
HOWARD W. JOHNSTONE
498

I ran a closed traverse in Sections 22 and 27 using a Nikon NTD-4 total station. I achieved a precision of 1:48,887 and adjusted the traverse by the Crandall method. I set the corners by standard subdivision procedure based on the location of the existing monuments. Previous surveys were done by Irving Zirpel Jr. & William Glenn in 1958, James Jelley in 1981 and Burton Holt in 1982.

Howard W. Johnstone P.O. Box 1088 Roseburg, Oregon



MAP FILE M100-47

MAP FILE M100-47