

COUNTY SURVEYORS FILE DATA  
DO NOT REMOVE FROM OFFICE

FILED

MAR 10 1986

C-126

COUNTY SURVEYOR  
DOUGLAS COUNTY, ORE. CMO

W 1/16 CORNER FOUND  
OSBF P/C, 1958  
30" FIR S61 1/2°W 12.1'  
(NOW 27"X4" HIGH STUMP IN PLACE)  
19" FIR N12°W 29.3' (FOUND  
DEPRESSION IN GROUND)  
26" FIR S56°E 22.0' (MISSING)  
6" ALDER (OSBF, 1976) N01°E 68.3'  
(NOW 14"X3" HIGH STUMP, IN PLACE)  
20" FIR STUMP (OSBF, 1976) S84 1/2°W  
44.2' (IN PLACE)  
WPCP S43°E 2.8' (IN PLACE)  
6" FIR (DEGROOT, 1985) S45 1/4°W 13.0' (IN PLACE)  
6" FIR (DEGROOT, 1985) N39 3/4°W  
16.0' (IN PLACE)

### LEGEND

- OSBF P/C = OREGON STATE BOARD OF FORESTRY
- 1 1/2" X 36" GALVANIZED IRON PIPE  
WITH 3" BRONZE CAP
- = MONUMENTS FOUND
- CRS = COURSE
- X = CARSONITE BOUNDARY MARKER & STATION
- #1 ( ) = RECORD BEARING AND DISTANCE (ARNOLD  
G. GIBSON, 1958) CS, M-9-34 DOUGLAS
- ← (TB & P) = TRUE BLAZED AND POSTED



### BASIS OF BEARING

ARNOLD G. GIBSON, 1958 SURVEY OF THE  
SECTION LINE BETWEEN 3 & 10, T.22S., R.11W., W.M.

### PURPOSE

TO SEPARATE STATE FOREST LANDS AND  
PRIVATE LANDS LOCATED IN SECTION 10,  
TOWNSHIP 22 SOUTH, RANGE 11 WEST,  
WILLAMETTE MERIDIAN BY POSTING AND  
BLAZING ON TRUELINE.

### PROCEDURE

A RANDOM TRAVERSE WAS RAN BETWEEN  
FOUND CORNERS. BEARINGS AND DISTANCES  
WERE COMPUTED AND OFFSETS CALCULATED  
TO POINTS ON TRUELINE.

SURVEY FOR:  
STATE OF OREGON - DEPARTMENT OF FORESTRY  
**SECTION 10, T.22S., R.11W., W.M.**

DOUGLAS COUNTY, OREGON  
THEODOLITE AND EDM SURVEY BY: LLOYD D. SMITH,  
J. MCINTOSH & A. KOREIVA  
DRAWN BY: A. KOREIVA  
JANUARY 22, 1986  
SCALE: 1"=400'

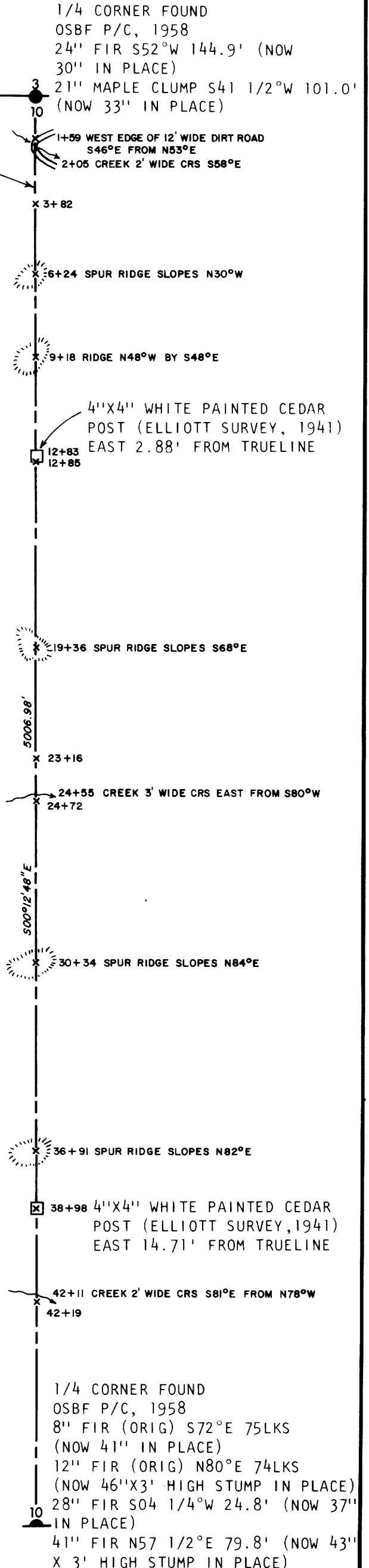
SURVEY BY:

**REGISTERED  
PROFESSIONAL  
LAND SURVEYOR**

*Lloyd D. Smith*

**OREGON  
JULY 22, 1977  
LLOYD D. SMITH  
1101**

LLOYD D. SMITH  
300 5TH ST. BAY PARK  
COOS BAY, OR.



**C-126**  
OSFD 2/18/86