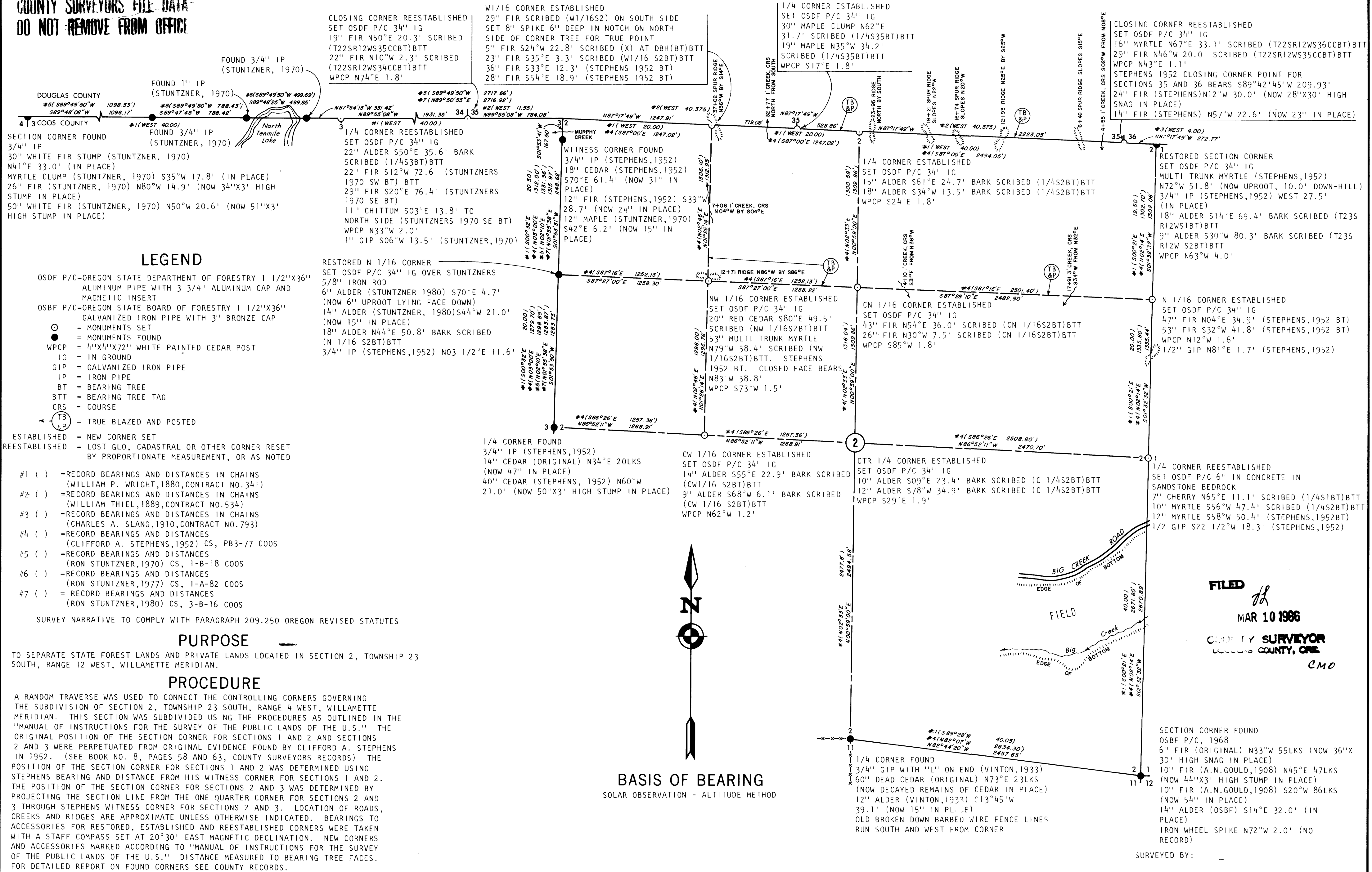


**COUNTY SURVEYORS FILE DATA**  
DO NOT REMOVE FROM OFFICE



**LEGEND**

- OSDF P/C=OREGON STATE DEPARTMENT OF FORESTRY 1 1/2"X36" ALUMINUM PIPE WITH 3 3/4" ALUMINUM CAP AND MAGNETIC INSERT
- OSBF P/C=OREGON STATE BOARD OF FORESTRY 1 1/2"X36" GALVANIZED IRON PIPE WITH 3" BRONZE CAP
- = MONUMENTS SET
- = MONUMENTS FOUND
- WPCP = 4"X4"X72" WHITE PAINTED CEDAR POST
- IG = IN GROUND
- GIP = GALVANIZED IRON PIPE
- IP = IRON PIPE
- BT = BEARING TREE
- BTT = BEARING TREE TAG
- CRS = COURSE
- (TB & P) = TRUE BLAZED AND POSTED
- ESTABLISHED = NEW CORNER SET
- REESTABLISHED = LOST GLO, CADASTRAL OR OTHER CORNER RESET BY PROPORTIONATE MEASUREMENT, OR AS NOTED

- #1 ( ) =RECORD BEARINGS AND DISTANCES IN CHAINS (WILLIAM P. WRIGHT, 1880, CONTRACT NO. 341)
- #2 ( ) =RECORD BEARINGS AND DISTANCES IN CHAINS (WILLIAM THIEL, 1889, CONTRACT NO. 534)
- #3 ( ) =RECORD BEARINGS AND DISTANCES IN CHAINS (CHARLES A. SLANG, 1910, CONTRACT NO. 793)
- #4 ( ) =RECORD BEARINGS AND DISTANCES (CLIFFORD A. STEPHENS, 1952) CS, PB3-77 COOS
- #5 ( ) =RECORD BEARINGS AND DISTANCES (RON STUNTZNER, 1970) CS, 1-B-18 COOS
- #6 ( ) =RECORD BEARINGS AND DISTANCES (RON STUNTZNER, 1977) CS, 1-A-82 COOS
- #7 ( ) = RECORD BEARINGS AND DISTANCES (RON STUNTZNER, 1980) CS, 3-B-16 COOS

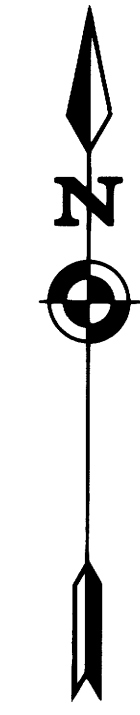
SURVEY NARRATIVE TO COMPLY WITH PARAGRAPH 209.250 OREGON REVISED STATUTES

**PURPOSE**

TO SEPARATE STATE FOREST LANDS AND PRIVATE LANDS LOCATED IN SECTION 2, TOWNSHIP 23 SOUTH, RANGE 12 WEST, WILLAMETTE MERIDIAN.

**PROCEDURE**

A RANDOM TRAVERSE WAS USED TO CONNECT THE CONTROLLING CORNERS GOVERNING THE SUBDIVISION OF SECTION 2, TOWNSHIP 23 SOUTH, RANGE 4 WEST, WILLAMETTE MERIDIAN. THIS SECTION WAS SUBDIVIDED USING THE PROCEDURES AS OUTLINED IN THE "MANUAL OF INSTRUCTIONS FOR THE SURVEY OF THE PUBLIC LANDS OF THE U.S." THE ORIGINAL POSITION OF THE SECTION CORNER FOR SECTIONS 1 AND 2 AND SECTIONS 2 AND 3 WERE PERPETUATED FROM ORIGINAL EVIDENCE FOUND BY CLIFFORD A. STEPHENS IN 1952. (SEE BOOK NO. 8, PAGES 58 AND 63, COUNTY SURVEYORS RECORDS) THE POSITION OF THE SECTION CORNER FOR SECTIONS 1 AND 2 WAS DETERMINED USING STEPHENS BEARING AND DISTANCE FROM HIS WITNESS CORNER FOR SECTIONS 1 AND 2. THE POSITION OF THE SECTION CORNER FOR SECTIONS 2 AND 3 WAS DETERMINED BY PROJECTING THE SECTION LINE FROM THE ONE QUARTER CORNER FOR SECTIONS 2 AND 3 THROUGH STEPHENS WITNESS CORNER FOR SECTIONS 2 AND 3. LOCATION OF ROADS, CREEKS AND RIDGES ARE APPROXIMATE UNLESS OTHERWISE INDICATED. BEARINGS TO ACCESSORIES FOR RESTORED, ESTABLISHED AND REESTABLISHED CORNERS WERE TAKEN WITH A STAFF COMPASS SET AT 20°30' EAST MAGNETIC DECLINATION. NEW CORNERS AND ACCESSORIES MARKED ACCORDING TO "MANUAL OF INSTRUCTIONS FOR THE SURVEY OF THE PUBLIC LANDS OF THE U.S." DISTANCE MEASURED TO BEARING TREE FACES. FOR DETAILED REPORT ON FOUND CORNERS SEE COUNTY RECORDS.



**BASIS OF BEARING**  
SOLAR OBSERVATION - ALTITUDE METHOD

SURVEY FOR:  
STATE OF OREGON - DEPARTMENT OF FORESTRY  
**SECTION 2, T.23S., R.12W., W.M.**  
COOS AND DOUGLAS COUNTIES, OREGON  
THEODOLITE AND EDM SURVEY BY: D. SMITH,  
J. MCINTOSH, A. KOREIVA & T. VANVLEET  
DRAWN BY: J. MCINTOSH  
DECEMBER 30, 1985  
SCALE: 1" = 500'

**FILED**  
MAR 10 1986  
COUNTY SURVEYOR  
DOUGLAS COUNTY, ORE.  
C.M.O.

REGISTERED  
PROFESSIONAL  
LAND SURVEYOR  
*Lloyd D. Smith*  
OREGON  
JULY 22, 1977  
LLOYD D. SMITH  
1101

LLOYD D. SMITH  
300 5TH ST. BAY PARK  
COOS BAY, OREGON

**B-272**  
OSDF 01/21/86

MAP FILE M1100-337

MAP FILE M1100-337

B-272