

Resurvey And Subdivision of SW 1/4 Section 29, T 28 S, R 4 W, W. M., Oregon

For Roseburg Resources Company

February 6, 1986

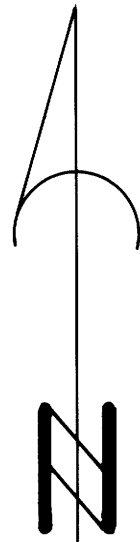
Scale: 1" = 400'

FILED *SL*

MAR 6 1986

COUNTY SURVEYOR
DOUGLAS COUNTY, OREGON
CMO

MAP FILE: M1160 - 36



Bearing based on 1922 resurvey
of West 1/2 of line between Sec. 29
32

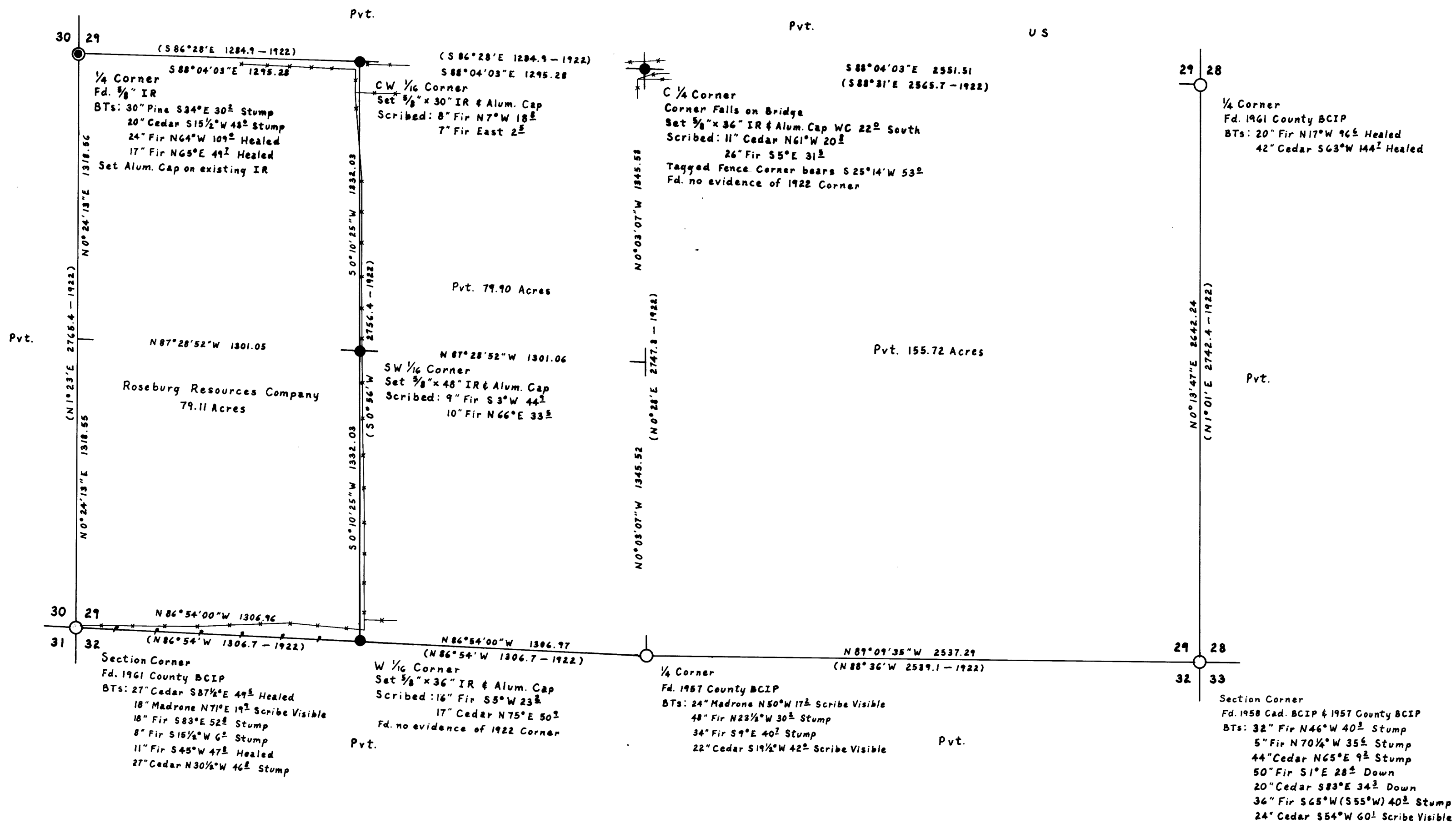
- 20
29
- 1/4 Corner
 - Fd. 1" IP
 - BTs: 20" Cedar N12 1/2° W 31 1/2 Stump
 - 30" Madrone N14° E 28 1/2 Rotted Face
 - 18" Fir S62 1/2° E 19 1/2 Healed
 - 10" Fir S10° W 42 1/2 Stump

Legend

- Monument Found as Noted
- Set 3/8" IR & Alum. Cap Marked "LS 498"
- Section or Property Line
- Line Marked With Steel Fence Posts
- Fence Line
- () Record Data

I ran a closed traverse in Section 29 using a Nikon NTD-4 total station. I achieved a precision of 1:100,477 and adjusted the traverse by the transit method. I set the corners by standard subdivision procedure based on the location of the existing monuments. The section was previously subdivided in 1922 by G.G. Stewart (see CS File 5/27).

Howard W. Johnstone P.O. Box 1088 Roseburg, Oregon



REGISTERED
PROFESSIONAL
LAND SURVEYOR

Howard W. Johnstone

OREGON
MAY 13, 1980
HOWARD W. JOHNSTONE
498

MAP FILE: M1160 - 36