

- NARRATIVE -

THIS SURVEY WAS MADE IN JANUARY, 1986 BY DONALD L. PEEL OF PEEL BAKER LAND SURVEYING INC., 1262 LAWRENCE STREET - SUITE 4, EUGENE, OREGON 97401. THE PURPOSE OF THIS SURVEY WAS TO LOCATE AND MARK SOME OF THE PROPERTY LINES AND ESTABLISH PROPERTY CORNERS OF THE LAND OWNED BY WEYERHAEUSER CO. IN THE S1/2 SEC. 21, T24S, R3W, W.M. A KERN K1M THEODOLITE AND DM502 E.D.M. WERE USED TO PERFORM THIS SURVEY. RANDOM TRANSIT TRAVERSES WITH A MINIMUM ERROR OF CLOSURE OF 1/10,000' WERE RUN TO THE NORTH 1/4 CORNER, WEST 1/4 CORNER AND THE SOUTHWEST SECTION CORNER TO BE USED AS CONTROL. THE REMAINDER OF THE CONTROL WAS ESTABLISHED BY THIS FIRM IN A 1983 SURVEY (C.S. FILE NO. M90-48). BEARINGS WERE BASED ON A SOLAR OBSERVATION AS ESTABLISHED IN SAID C.S. NO. 90-48. I FOUND WEYERHAEUSER COMPANY BEARING TREES FOR THE SOUTH 1/4 CORNER BUT I COULD NOT FIND A DIRECT CHAIN OF EVIDENCE OR RECORDS THAT WOULD LINK THE ORIGINAL 1/4 CORNER POSITION TO THE WEYERHAEUSER BEARING TREES. BECAUSE OF THIS LACK OF EVIDENCE OF THE CORNER'S ORIGINAL POSITION, I ELECTED TO REESTABLISH THE SOUTH 1/4 CORNER BY THE "GRANT BOUNDARY" METHOD. THE POSITION FOR THE CENTER 1/4 CORNER WAS DETERMINED (BUT NOT SET) AT THE POINT OF INTERSECTION OF THE NORTH-SOUTH AND EAST-WEST CENTERLINES. THE CENTER-SOUTH 1/16 CORNER WAS SET AT MIDPOINT BETWEEN THE SOUTH 1/4 AND CENTER 1/4 CORNERS. THE CENTER-WEST 1/16 CORNER WAS SET AT THE POINT OF INTERSECTION OF THE NORTH-SOUTH AND EAST-WEST CENTERLINES OF THE SOUTHWEST 1/4. A RANDOM TRANSIT TRAVERSE WAS RUN NEAR THE PROPERTY LINES TO BE MARKED. OFFSETS FROM THE RANDOM LINE TO THE TRUE PROPERTY LINE WERE CALCULATED AND USED TO DETERMINE THE POSITION OF THE TRUE LINE. THE TRUE PROPERTY LINE WAS MARKED IN THE FIELD BY BLAZING TREES ON BOTH SIDES OF THE TRUE LINE (BLAZES NOTCHED AND PAINTED RED). ALL CORNERS SET IN THIS SURVEY WERE MONUMENTED WITH IRON PIPES AND BRASS CAPS (AS NOTED ON PLAT) AND WERE REFERENCED BY SCRIBING BEARING TREES. THE DISTANCES TO ALL BEARING TREES SET IN THIS SURVEY WERE MEASURED TO A "W" NAIL IN THE LOWER BLAZE AND BEARINGS ARE MAGNETIC, VAR. 20°.

1/4 CORNER 16 & 21
FOUND: 1" IRON PIPE WITH G.L.O. BRASS CAP "1950"
18" TRIPLE MAPLE, S10-1/2W, 63.3' (CENTER MEASURE)
30" FIR STUMP, N7-1/2W, 34.8' (FACE MEASURE)
S.E. BT NOW UPROOTED AND DOWN
SET NEW: 13" FIR, N39-1/2E, 30.4' - SCRIBED 1/4 S16 BT (DIST. TO "W" NAIL)

1/4 CORNER 20 & 21
FOUND: 1" IRON PIPE WITH G.L.O. BRASS CAP "1950"
19" FIR, N83-1/2E, 24.0' (CENTER MEASURE)
18" FIR, S20-1/2E, 13.4' (CENTER MEASURE)
45" FIR STUMP, S14W, 35.8' (CENTER MEASURE)
SET NEW: 16" FIR, S36W, 34.0' - SCRIBED 1/4 S20 BT (DIST. TO "W" NAIL)

CENTER-WEST 1/16 SECTION 21
SET: 1-1/2" X 44" IRON PIPE WITH BRASS CAP
29" FIR, S62E, 17.3' - SCRIBED CW 1/16 S21 BT
23" FIR, S28W, 20.8' - SCRIBED CW 1/16 S21 BT

1/4 CORNER 21 & 22
FOUND: 1-1/4" IRON PIPE WITH BRASS CAP (C.S. NO. M90-48)
31" FIR, N88E, 34.8' (DIST. TO "W" NAIL)
22" FIR, N34W, 32.8' (DIST. TO "W" NAIL)
NOTE: 1" AL. PIPE SET BY WEYERHAEUSER CO. BEARS N 84°25'51"E, 13.47'

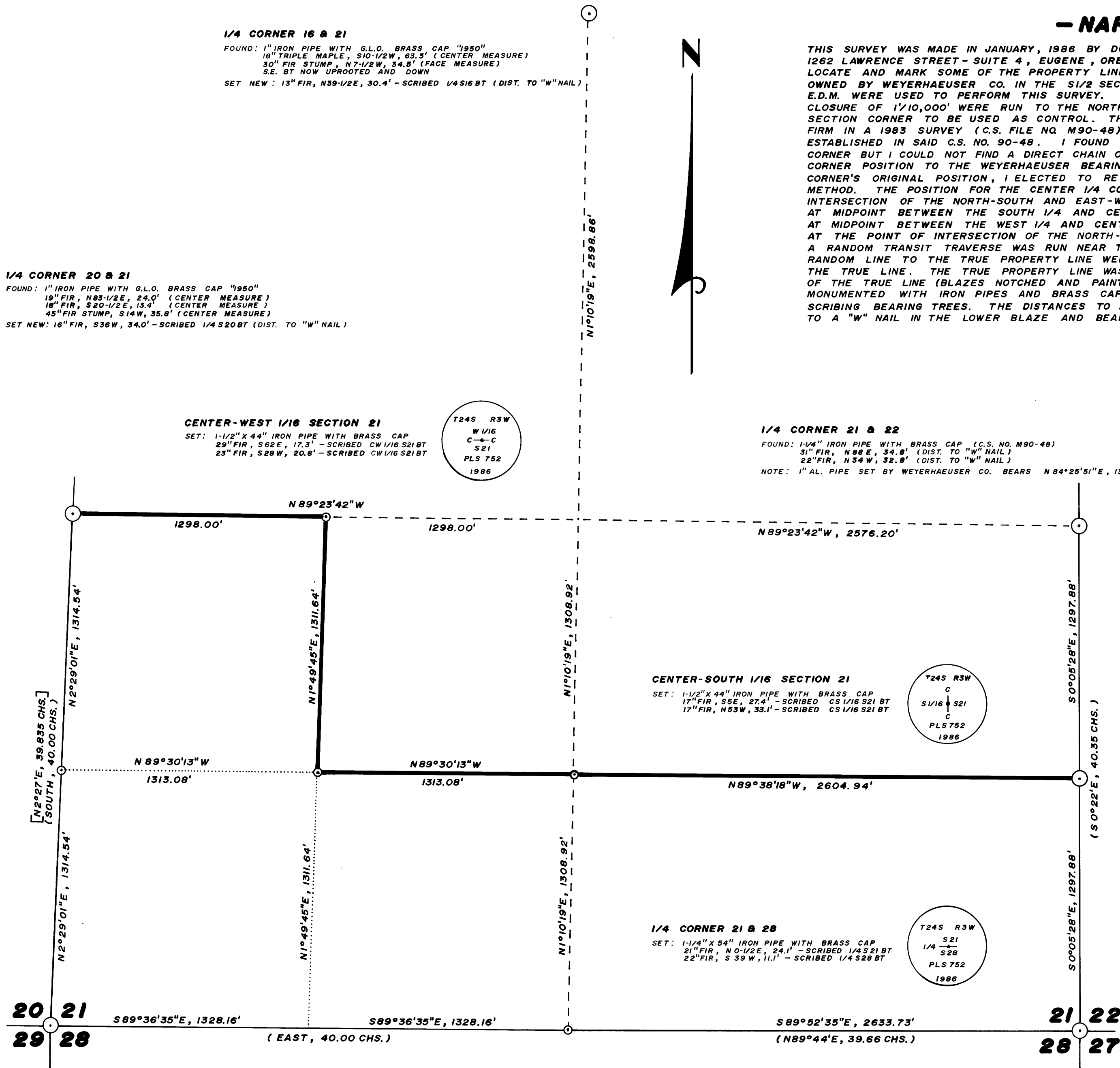
CENTER-SOUTH 1/16 SECTION 21
SET: 1-1/2" X 44" IRON PIPE WITH BRASS CAP
17" FIR, S5E, 27.4' - SCRIBED CS 1/16 S21 BT
17" FIR, N53W, 33.1' - SCRIBED CS 1/16 S21 BT

1/4 CORNER 21 & 28
SET: 1-1/4" X 54" IRON PIPE WITH BRASS CAP
21" FIR, N0-1/2E, 24.1' - SCRIBED 1/4 S21 BT
22" FIR, S39W, 11.1' - SCRIBED 1/4 S28 BT

SOUTH 1/16 CORNER 21 & 22
FOUND: 1-5/8" IRON PIPE WITH BRASS CAP (C.S. NO. M90-48)
20" HEMLOCK, S78E, 31.8' (DIST. TO "W" NAIL)
36" FIR STUMP, N21W, 22.8' (DIST. TO "W" NAIL)
NOTE: 1" AL. PIPE SET BY WEYERHAEUSER CO. BEARS S 83°39'08"E, 10.69'

BASIS OF BEARING: SOLAR OBSERVATION (AS PER C.S. NO. M90-48)
SCALE: 1" = 400'

- CORNERS FOUND
- ⊙ CORNERS SET THIS SURVEY
- BLAZED PROPERTY LINE (BLAZES PAINTED RED)
- () G.L.O. BEARING AND DISTANCE
- [] 1950 B.L.M. BEARING AND DISTANCE



SECTION CORNER 20, 21, 28, 29
FOUND: 2" IRON PIPE WITH G.L.O. BRASS CAP "1950"
(IN MOUND OF STONE)
32" CEDAR STUMP, S55E, 28.4' (DIST. TO "W" NAIL)
27" FIR STUMP, S15W, 36.3' (DIST. TO "W" NAIL)
50" FIR STUMP, N82-1/2W, 46.4' (CENTER MEASURE)
11" DEAD YEW, N42W, 16.9' (DIST. TO "W" NAIL)

SOUTHWEST 1/16 SECTION 21
SET: 1-7/8" X 30" IRON PIPE WITH BRASS CAP
20" FIR, N53E, 43.4' - SCRIBED SW 1/16 S21 BT
17" FIR, S68E, 22.3' - SCRIBED SW 1/16 S21 BT

SECTION CORNER 21, 22, 27, 28
FOUND: 1-1/2" IRON PIPE
14" FIR, N72E, 39.0' (DIST. TO "W" NAIL)
60" FIR STUMP, S41E, 30.8' (DIST. TO "W" NAIL)
60" FIR STUMP, S53W, 53.3' (DIST. TO "W" NAIL)
31" CEDAR, N67W, 56.2' (DIST. TO "W" NAIL)

SOUTH 1/16 CORNER 20 & 21
SET: 2-1/2" X 48" IRON PIPE WITH BRASS CAP
17" FIR, S19E, 24.5' - SCRIBED S1/16 S21 BT
13" FIR, N74W, 23.9' - SCRIBED S1/16 S20 BT

SURVEY IN
S 1/2 SEC. 21, T24S, R3W, W.M.
DOUGLAS COUNTY, OREGON
FOR
WEYERHAEUSER CO.
BY
PEEL BAKER LAND SURVEYING INC.
JANUARY 31, 1986

M100 - 29

M100 - 29