

COUNTY SURVEYORS FILE DATA  
DO NOT REMOVE FROM OFFICE

SURVEY FOR

DENNIS C. & JOAN HUDGINS

E 1/2 S 32 T.29S. R.5W W.M.

DEED REF  
72-1268, 75-16184, 76-2811 HUDGINS  
74-3724 STATE HWY  
VOL 124 P 630 ZONE CHANGE  
PER COUNTY COURT JOURNAL

LEGEND

- FND 1" IRON PIPE PER C/S 46/157
- △ CALCULATED POINT
- FND 5/8" IRON ROD, O.S.H.D. R/W
- FND 5/8" IRON ROD & AL. CAP, O.S.H.D. R/W
- ✕ FENCE
- SET 5/8" X 30" IRON ROD  
8 1/2" PLASTIC CAP MKD  
LS 866

SEE ACCOMPANYING  
NARRATIVE

FILED  
RECEIVED CMO  
DEC 3 1985

COUNTY SURVEYOR  
DOUGLAS COUNTY, ORE.  
CMO

NE  
COR.  
DLC 43

VOL 124 P 630  
± 2.0 Ac.

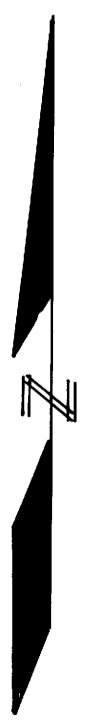
± 11.94 Ac.

S.E. COR. DLC 43  
SW COR. DLC 42

STONE  
"4" VISIBLE

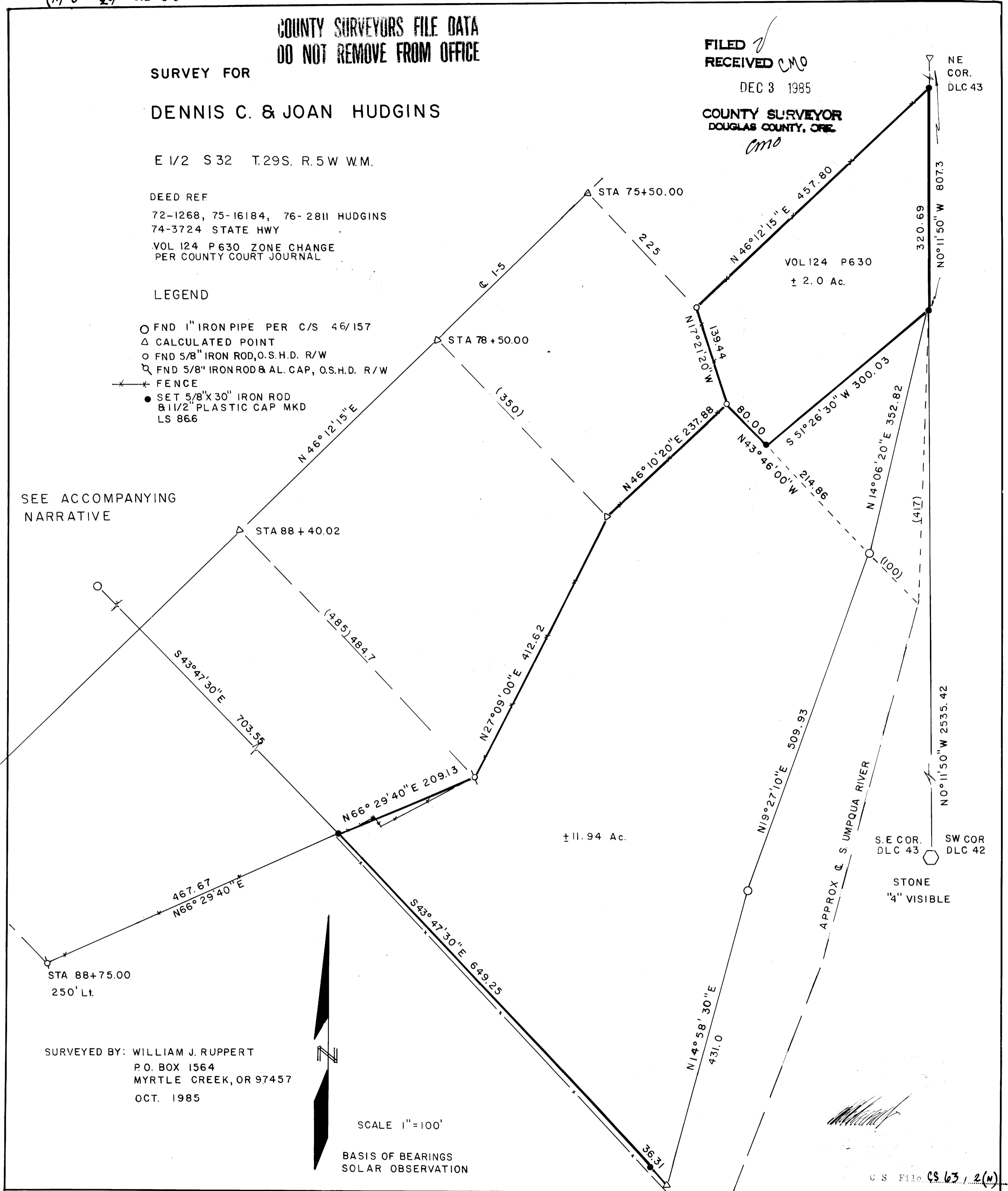
STA 88+75.00  
250' Lt.

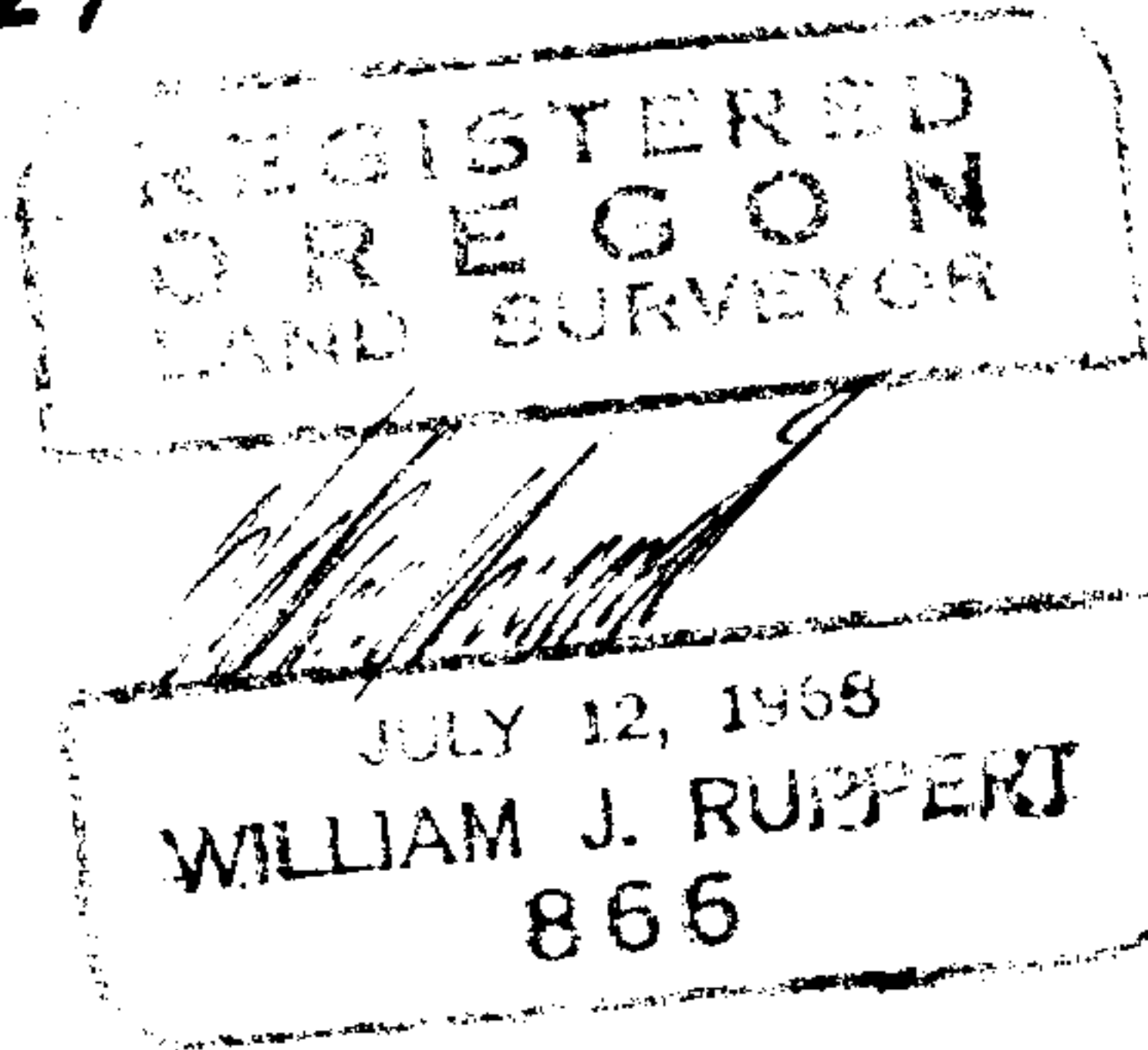
SURVEYED BY: WILLIAM J. RUPPERT  
P.O. BOX 1564  
MYRTLE CREEK, OR 97457  
OCT. 1985



SCALE 1"=100'

BASIS OF BEARINGS  
SOLAR OBSERVATION





M 99 - 80

FILED *J*  
RECEIVED CMO

DEC 3 1985

COUNTY SURVEYOR  
DOUGLAS COUNTY, ORE.

SURVEY NARRATIVE

To Accompany Map

SURVEY FOR: Dennis C. & Joan Hudgins

LOCATION: E $\frac{1}{2}$  Section 32 Township 32 South, Range 5 West, Willamette Meridian

DATE: October 1985

PURPOSE: To locate property lines per Deed #'s 72-1268, 75-16184, 76-28117 Douglas County Deed Records and Zone Change per Volume 124, Page 630 of Douglas County Court Journal.

BOUNDARY CONTROL:

Highway right-of-way was determined from the highway map on file in the County Surveyor's Office and Deed #74-3724.

The most southerly corner was set at an intersection of record distances from monuments per CS/46/157. Distances and bearings per Hudgin's deeds are based on CS/46/157. The monument I set was placed back on line 36.31 feet because the river bank has eroded at the point where the original monument was set.

The most northerly corner was set at an intersection of highway right-of-way and the DLC line.

At the corner South 0 $^{\circ}$ 11'50" East 320.69 feet from the most northerly corner I set the monument at 807.3 feet from the NE corner of DLC 43. The 807.3 record distance was taken from Deed # 72-1268, Survey CS/46/157 and description per said Volume 125 Page 630 Douglas County Court Journal.

In construing the description per Volume 124 Page 630 I held the 80.00 foot distance from the State Highway right-of-way although the distance is stated as more or less indicating that the bearing "South 230 $^{\circ}$ " should control over this distance. This description contains references to deed bearings mixed with bearings per highway department deeds which are per Oregon State coordinate system. Not knowing which basis of bearing to use I held the distances.

BASIS OF BEARING:

Bearings are based on a solar observation by altitude method. Rotation from my survey to State Highway is 1 $^{\circ}$ 56'55" clockwise. Calculated rotation of the grid system to true at the NE corner of DLC 43 is -1 $^{\circ}$ 55'04".

NE CORNER DLC 43:

This point was calculated from Highway Department ties per Deed #74-3724.

M99-80

FILED *J*  
RECEIVED CMO

DEC 3 1985

Page 2 of 2  
Survey Narrative  
Dennis C. & Joan Hudgins

COUNTY SURVEYOR  
DOUGLAS COUNTY, ORE.

ACREAGE MEASUREMENT:

Approximate thread of the stream measurements (100 feet and 417 feet) were obtained from Deed #72-1268. The remaining thread of the stream locations were approximated from aerial photos.

EQUIPMENT: Lietz T60D Theodolite, MAC II EDM and 100 foot steel tape.

SURVEYED BY: William J. Ruppert  
P.O. Box 1564  
Myrtle Creek, OR 97457

