

U.S. FOREST SERVICE SULPHUR CADASTRAL SURVEY

SIUSLAW NATIONAL FOREST Contract No. 53-04TO-4-2010N SECTION 7, T.20S., R.10W., W.M., DOUGLAS COUNTY, OREGON SCALE - 1" = 500' OCTOBER 1, 1985

REGISTERED
PROFESSIONAL
LAND SURVEYOR
OREGON
JULY 18, 1980
MICHAEL J. SCHWARTZ
1922

F. LAND
D. HUNNEMULLER
OREGON
AUGUST 22, 1975
HUNNEMULLER
1950

SECTION CORNER 12 | 6
Found: 1971 Brasscap
Marked: T205 R10W
512 | 56
R11W
1971
4185

SECTION CORNER 12 | 7
Found: U.S.F.S. 1983 Alum. Cap
Marked: T205
R11W R10W N83°57'09"W
15.80ft. from
512 | 57 CC True Position
PLS 752
1983

DO NOT REMOVE FROM OFFICE

NARRATIVE:

The purpose of this survey is to monument and mark the lines between the Siuslaw National Forest and private ownership in Sections 7 and 18 in T.20S., R.10W. and a resurvey of part of the range line between R.10W. and R.11W.

The Range line was originally surveyed by William Thiel in 1892 and resurveyed by Nathaniel Martin in 1894 as a completion of his subdivisional work he performed in 1892.

James Prochnau in 1971 surveyed the lines between sections 5, 6, 7 and 8 in CS# M41-77 and M43-56. Richard Hintz in 1983 subdivided sections 8, 17 & 20 in CS# M90-42.

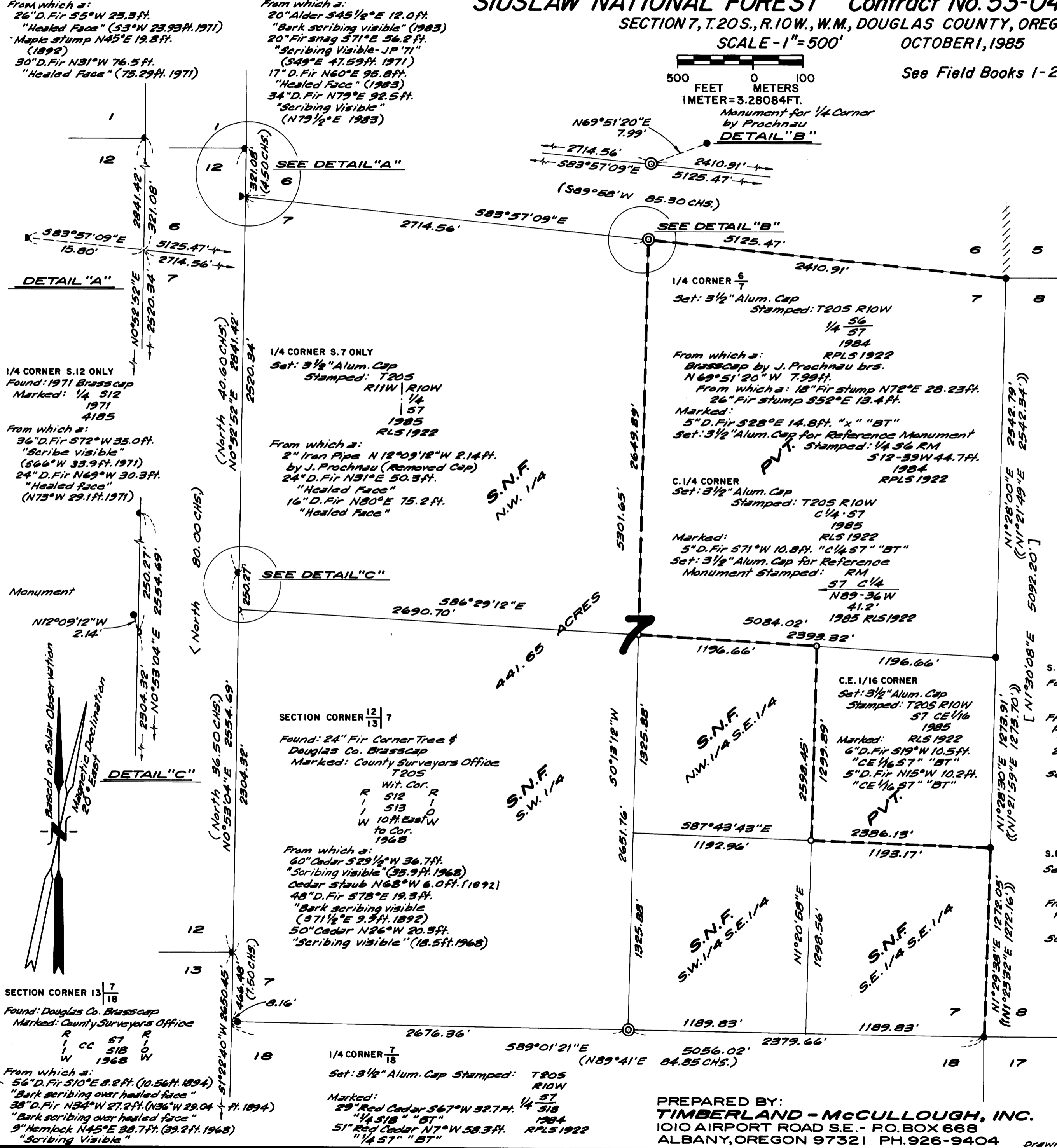
Don Peal in 1984 surveying in Sections 1 & 2, T.20S., R.11W., tied to the corners to 1 & 2 and 6 & 7 on the range line in CS# M94-64 & CS# M97-39. In CS# M94-64, Peal found what he felt was original evidence at the closing corner for 6 & 7 that had been set by proportion by Prochnau. After a thorough review of the evidence, Mr. Prochnau, the Douglas County Surveyor, representatives of Timberland-McCullough, and the Siuslaw N.F. agreed upon the position found by Mr. Peal.

Timberland-McCullough, Inc., in 1984, was contracted by the Siuslaw N.F. to subdivide Section 7 & 18 under the Sulphur Cadastral Survey. A difference of opinion arose to the positioning of the 1/4 corner between 7 & 18. The Douglas County Surveyor and the B.L.M. were contacted for opinions. The Douglas County Surveyor agreed with the Timberland-McCullough position. The B.L.M. agreed with the position of the forest service and in their letter dated October 25, 1984, stated that Martin's 1894 survey superseded a portion of his 1892 survey and that all 1/4 corners on the closing lines should be set by single proportion based on the official plat, even if original evidence was found. A substantial amount of discussion surrounded this point in which there was no final agreement between all the parties involved. After much consideration on this matter, a final decision was made to absolve Timberland-McCullough from the Professional liability under their contract and have the Land Surveyors of the Siuslaw N.F. complete this project under their professional license with the fieldwork and platting necessary to complete the project performed by Timberland-McCullough.

A review of the corners on this project:

- 1/4 between 18 & 19 -- This corner had been reestablished from original Martin evidence by Douglas County in 1968. This position is harmonious with a proportion position (as regarded by the B.L.M.) and since it was restored in good faith based on evidence at that time, it is accepted as the position for this corner.
- 1/4 between 7 & 18 -- The position of this corner was determined at single proportion. With the conflict in history to protect the rights of the landowners, we determined this to be the best decision.

(see Sheet 2 of 2 for continuation)



From which a:
26" D. Fir S5°W 25.3ft.
"Healed Face" (S3°W 23.93ft. 1971)
Maple stump N45°E 19.8ft. (1892)
30" D. Fir N31°W 76.5ft.
"Healed Face" (75.29ft. 1971)

From which a:
20" Alder S45 1/2° E 12.0ft.
"Bark scribing visible" (1983)
20" Fir snag 371°E 56.2ft.
"Scribing Visible-JP 71"
(S49°E 47.59ft. 1971)
17" D. Fir N60°E 95.8ft.
"Healed Face" (1983)
34" D. Fir N79°E 92.5ft.
"Scribing Visible"
(N79 1/2° E 1983)

1/4 CORNER S.12 ONLY
Found: 1971 Brasscap
Marked: 1/4 512
1971
4185

1/4 CORNER S.7 ONLY
Set: 3 1/2" Alum. Cap
Stamped: T205 R10W
R11W R10W
1/4 512
1985
RLS 1922

From which a:
36" D. Fir S72°W 35.0ft.
"Scribe visible"
(S66°W 33.9ft. 1971)
24" D. Fir N69°W 30.3ft.
"Healed face"
(N73°W 29.1ft. 1971)

From which a:
2" Iron Pipe N 12°09'18"W 2.14ft.
by J. Prochnau (Removed Cap)
24" D. Fir N31°E 50.3ft.
"Healed Face"
16" D. Fir N80°E 75.2ft.
"Healed Face"

Monument
Based on Solar Observation
Magnetic Declination
20° East

From which a:
60" Cedar S29 1/2° W 36.7ft.
"Scribing visible" (35.9ft. 1968)
Cedar stub N68°W 6.0ft. (1892)
48" D. Fir S78°E 19.3ft.
"Bark scribing visible"
(S71 1/2° E 9.3ft. 1892)
50" Cedar N26°W 20.3ft.
"Scribing visible" (18.5ft. 1968)

SECTION CORNER 12 | 7
Found: 24" Fir Corner Tree &
Douglas Co. Brasscap
Marked: County Surveyors Office
T205
R Wit. Cor. R
512 57
513 51
W 10ft East W
to Cor.
1968

SECTION CORNER 13 | 7
Found: Douglas Co. Brasscap
Marked: County Surveyors Office
R 57 R
W 513 W
1968

1/4 CORNER 18 | 7
Set: 3 1/2" Alum. Cap Stamped: T205 R10W
Marked: 57
29" Red Cedar S67°W 32.7ft. 1/4 513
1/4 518 "BT" 1984
51" Red Cedar N7°W 58.3ft. RLS 1922
1/4 57 "BT"

From which a:
56" D. Fir S10°E 8.2ft. (10.56ft. 1894)
"Bark scribing over healed face"
38" D. Fir N34°W 27.2ft. (N36°W 29.0ft. 1894)
"Bark scribing over healed face"
9" Hemlock N45°E 38.7ft. (39.2ft. 1968)
"Scribing Visible"

PREPARED BY:
TIMBERLAND - McCULLOUGH, INC.
1010 AIRPORT ROAD S.E. - P.O. BOX 668
ALBANY, OREGON 97321 PH. 926-9404
Drawn By: LeRoy H. Pettijohn

LEGEND:

- Indicates Corner Established
- ⊙ Indicates Corner Reestablished
- Indicates Corner Found
- +++++ Previously Posted
- Indicates line posted w/ U.S.F.S. Boundary Sign Posts
- S.N.F. = Siuslaw National Forest
- P.V.T. = Private Ownership
- < > = Thiel
- [] = Martin
- [] = Prochnau
- () = Hintz

Found: Douglas Co. Brasscap Marked: County Surveyors Office
T205
57 | 58
518 | 517
R10W
1968

From which a:
18" Maple S22°E 56.0ft. "Healed Face" (24" 57.7ft. 1968)
Decayed Fir S40°W 50.2ft. "Face Pitch slab "W BT" (1874)
20" D. Fir stump S40°W 55.3ft. "Bark scribing visible "TROR10W317"
25" D. Fir snag (12ft.) S76°W 44.7ft. "Bark scribing visible "R10W"
29" Maple N81°E 7.0ft. "Sears visible - severe lean" (1968)
Marked:
Concrete Nail in Large Sandstone Boulder
N63°W 10.7ft.

CS File No. 63129
M 99-79A

CS File No. 63129
M 99-79A