

U.S. FOREST SERVICE SULPHUR CADASTRAL SURVEY

SIUSLAW NATIONAL FOREST Contract No. 53-04TO-4-2010N

SECTION 7, T.20S., R.10W., W.M., DOUGLAS COUNTY, OREGON
SCALE - 1" = 500' OCTOBER 1, 1985
See Field Books 1-20

REGISTERED
PROFESSIONAL
LAND SURVEYOR
OREGON
JULY 18, 1960
MICHAEL J. SCHWARTZ
1922

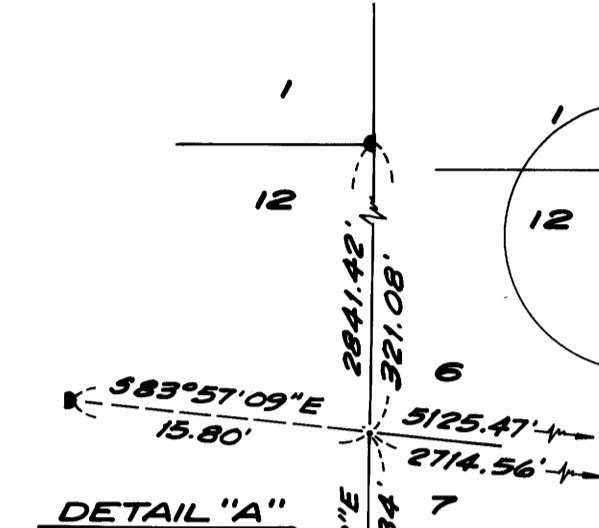
F. LAND
D. HUNNEMULLER
OREGON
AUGUST 22, 1975
HUNNEMULLER
1950

SECTION CORNER 12 | 6
Found: 1971 Brasscap
Marked: T205 R10W
512 | 56
R11W
1971
4185

SECTION CORNER 12 | 6
Found: U.S.F.S. 1983 Alum. Cap
Marked: T205
R11W R10W N83°57'09"W
15.80ft. from
512 | 57 CC True Position
PLS 752
1983

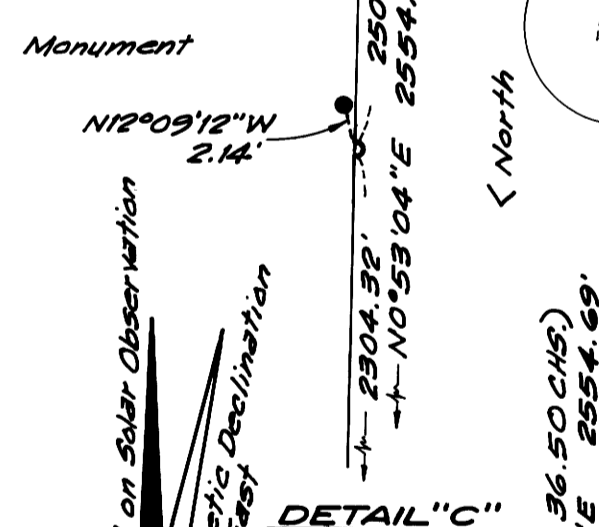
From which a:
26" D. Fir S5°W 25.3ft.
"Healed Face" (S3°W 23.93ft. 1971)
Maple stump N45°E 19.8ft.
(1892)
30" D. Fir N31°W 76.5ft.
"Healed Face" (75.29ft. 1971)

From which a:
20" Alder S45 1/2° E 12.0ft.
"Bark scribing visible" (1983)
20" Fir snag 371°E 56.2ft.
"Scribing Visible-JP 71"
(S49°E 47.59ft. 1971)
17" D. Fir N60°E 95.8ft.
"Healed Face" (1983)
34" D. Fir N79°E 92.5ft.
"Scribing Visible"
(N79 1/2° E 1983)



1/4 CORNER S.12 ONLY
Found: 1971 Brasscap
Marked: 1/4 512
1971
4185
From which a:
36" D. Fir S72°W 35.0ft.
"Scribe visible"
(S66°W 33.9ft. 1971)
24" D. Fir N69°W 30.3ft.
"Healed face"
(N73°W 29.1ft. 1971)

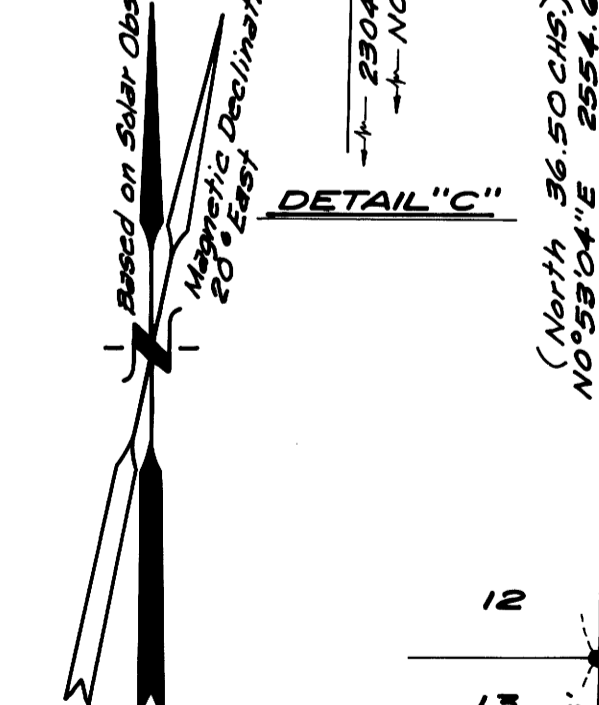
1/4 CORNER S. 7 ONLY
Set: 3 1/2" Alum. Cap
Stamped: T205
R11W R10W
1/4 57
1984
From which a:
RPLS 1922
Brasscap by J. Prochnau brs.
N69°51'20" W 7.99ft.
From which a: 18" Fir stump N72°E 28.23ft.
26" Fir stump S52°E 13.4ft.
Marked:
5" D. Fir S28°E 14.8ft. "x" "BT"
Set: 3 1/2" Alum. Cap for Reference Monument
Stamped: 1/4 56 RM
1984
RPLS 1922



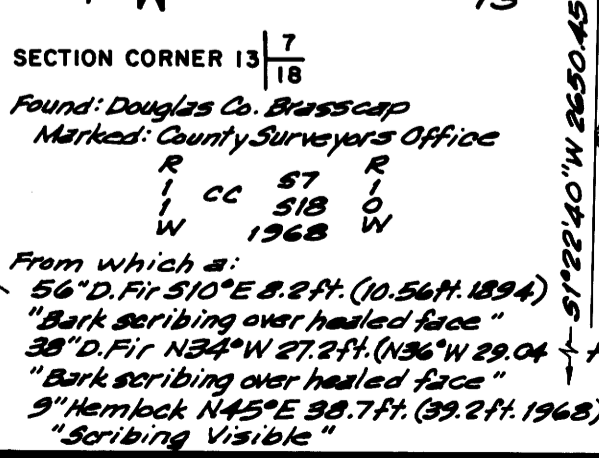
From which a:
2" Iron Pipe N12°09'18"W 2.14ft.
by J. Prochnau (Removed Cap)
24" D. Fir N31°E 50.3ft.
"Healed Face"
16" D. Fir N80°E 75.2ft.
"Healed Face"

SECTION CORNER 13 | 7
Found: Douglas Co. Brasscap
Marked: County Surveyors Office
T205
R 512 R
W 513 W
10ft East
to Cor.
1968
From which a:
56" D. Fir S10°E 8.2ft. (10.56ft. 1894)
"Bark scribing over healed face"
38" D. Fir N34°W 27.2ft. (N36°W 29.0ft. 1894)
"Bark scribing over healed face"
9" Hemlock N45°E 38.7ft. (39.2ft. 1968)
"Scribing Visible"

1/4 CORNER 13 | 7
Set: 3 1/2" Alum. Cap Stamped: T205
R10W
Marked: 57
1/4 518
1984
From which a:
29" Red Cedar S67°W 32.7ft. 1/4 518
1/4 518 "BT"
51" Red Cedar N7°W 53.3ft. RPLS 1922
1/4 57 "BT"

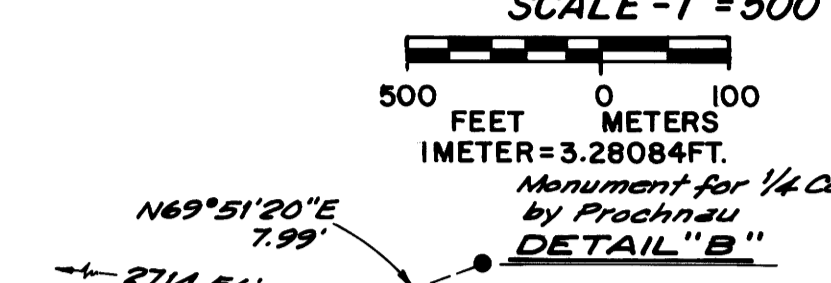


SECTION CORNER 12 | 7
Found: 24" Fir Corner Tree &
Douglas Co. Brasscap
Marked: County Surveyors Office
T205
R 512 R
W 513 W
10ft East
to Cor.
1968
From which a:
60" Cedar S29 1/2° W 36.7ft.
"Scribing visible" (35.9ft. 1968)
Cedar stub N68°W 6.0ft. (1892)
48" D. Fir S78°E 19.3ft.
"Bark scribing visible"
(S71 1/2° E 9.3ft. 1892)
50" Cedar N26°W 20.3ft.
"Scribing visible" (18.5ft. 1968)



1/4 CORNER 13 | 8
Set: 3 1/2" Alum. Cap Stamped: T205
R10W
Marked: 57
1/4 518
1985
From which a:
19" W. Hemlock N78 1/2° E 27.6ft.
"SE 1/4 57" "BT"
Set: 3 1/2" Alum. Cap for Reference Monument
Stamped: RM SE 1/4 57
N5-17E 45.0ft.
1985 RLS 1922

SECTION CORNER 13 | 8
Found: Douglas Co. Brasscap
Marked: County Surveyors Office
T205
R 512 R
W 513 W
1968
From which a:
18" Maple S22°E 56.0ft. "Healed Face" (24" 57.7ft. 1968)
Decayed Fir S40°W 50.2ft. "Face Pitch slab "W BT" (1874)
20" D. Fir stump S40°W 55.3ft. "Bark scribing visible "TROR10W317"
25" D. Fir snag (12ft.) S76°W 44.7ft. "Bark scribing visible "R10W"
29" Maple N81°E 7.0ft. "scars visible - severe lean" (1968)
Marked:
Concrete Nail in Large Sandstone Boulder
N63°W 10.7ft.



SECTION CORNER 6 | 5
Found: 1971 Brasscap
Marked: T205 R10W
6 | 5
7 | 8
1971
4185
From which a:
8" Alder N54°W 10.3ft.
"Bark scribe face high"
(10.8ft. 1971)
30" Fir stump S74°E 60.0ft.
"Bark scribed" "RENW 38"
(59.60ft. 1971)
60" Fir stump S80°W 42.27ft.
"Bark scribed" "BT 57"
(40.78ft. 1971)
Spruce is windthrown (1971)
Marked:
7" Alder S48°E 47.1ft.
"T205 R10W 58" "BT"
11" Alder N70°E 22.2ft.
"T205 R10W 55" "BT"
Set: 3 1/2" Alum. Cap for
Reference Monument
Marked: T205 R10W 56 RM
980-10E 72.4ft.
1984
RPLS 1922

1/4 CORNER 6 | 7
Set: 3 1/2" Alum. Cap
Stamped: T205 R10W
1/4 56
1984
From which a:
RPLS 1922
Brasscap by J. Prochnau brs.
N69°51'20" W 7.99ft.
From which a: 18" Fir stump N72°E 28.23ft.
26" Fir stump S52°E 13.4ft.
Marked:
5" D. Fir S28°E 14.8ft. "x" "BT"
Set: 3 1/2" Alum. Cap for Reference Monument
Stamped: 1/4 56 RM
1984
RPLS 1922

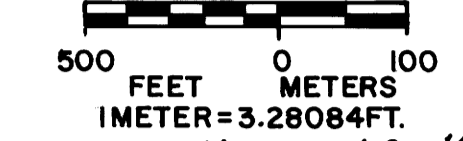
C. 1/4 CORNER
Set: 3 1/2" Alum. Cap
Stamped: T205 R10W
C 1/4 57
1985
Marked:
RPLS 1922
5" D. Fir S71°W 10.8ft. "C 1/4 57" "BT"
Set: 3 1/2" Alum. Cap for Reference
Monument Stamped: RM
57 C 1/4
N89°36'W
41.2'
1985 RLS 1922

1/4 CORNER 7 | 8
Found: 1971 Brasscap
Marked: 1/4 57
1971
4185
From which a:
18" D. Fir brs. (S69°E 26.6ft. 1971)
So badly "J" d can't tell where
to measure to.
11" Maple S30°W 58.4ft.
"Scribing visible" (59.43ft. 1971)
Marked:
10" D. Fir S43°E 44.6ft.
"1/4 58" "BT"

S. 1/16 CORNER 7 | 8
Found: 1971 Brasscap Marked: 5 1/2
57 | 58
1971
4185
From which a:
14" S. Maple N52°E 41.6ft.
"Scribe partially covered" (N56°E 45.7ft. 1971)
20" D. Fir N39°W 40.4ft. (1971)
"W/healed face"
Set: 3 1/2" Alum. Cap for Reference
Monument Stamped: RM
58
584-23W
44.5'
3 1/16
1985 RLS 1922

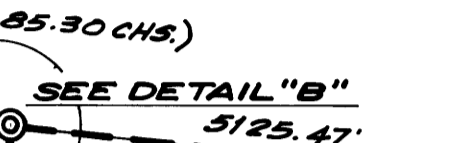
S.E. 1/16 CORNER
Set: 3 1/2" Alum. Cap Stamped: T205 R10W
SE 1/16
57
1985 RLS 1922
From which a:
19" W. Hemlock N78 1/2° E 27.6ft.
"SE 1/4 57" "BT"
Set: 3 1/2" Alum. Cap for Reference Monument
Stamped: RM SE 1/4 57
N5-17E 45.0ft.
1985 RLS 1922

SECTION CORNER 7 | 8
Found: Douglas Co. Brasscap Marked: County Surveyors Office
T205
57 | 58
518 | 517
R10W
1968
From which a:
18" Maple S22°E 56.0ft. "Healed Face" (24" 57.7ft. 1968)
Decayed Fir S40°W 50.2ft. "Face Pitch slab "W BT" (1874)
20" D. Fir stump S40°W 55.3ft. "Bark scribing visible "TROR10W317"
25" D. Fir snag (12ft.) S76°W 44.7ft. "Bark scribing visible "R10W"
29" Maple N81°E 7.0ft. "scars visible - severe lean" (1968)
Marked:
Concrete Nail in Large Sandstone Boulder
N63°W 10.7ft.



500 FEET 100 METERS
IMETER = 3.28084 FT.

Monument for 1/4 Corner
by Prochnau
DETAIL "B"



SECTION CORNER 6 | 8
Found: 1971 Brasscap
Marked: T205 R10W
6 | 8
1971
4185
From which a:
8" Alder N54°W 10.3ft.
"Bark scribe face high"
(10.8ft. 1971)
30" Fir stump S74°E 60.0ft.
"Bark scribed" "RENW 38"
(59.60ft. 1971)
60" Fir stump S80°W 42.27ft.
"Bark scribed" "BT 57"
(40.78ft. 1971)
Spruce is windthrown (1971)
Marked:
7" Alder S48°E 47.1ft.
"T205 R10W 58" "BT"
11" Alder N70°E 22.2ft.
"T205 R10W 55" "BT"
Set: 3 1/2" Alum. Cap for
Reference Monument
Marked: T205 R10W 56 RM
980-10E 72.4ft.
1984
RPLS 1922

1/4 CORNER 6 | 8
Set: 3 1/2" Alum. Cap
Stamped: T205 R10W
1/4 56
1984
From which a:
RPLS 1922
Brasscap by J. Prochnau brs.
N69°51'20" W 7.99ft.
From which a: 18" Fir stump N72°E 28.23ft.
26" Fir stump S52°E 13.4ft.
Marked:
5" D. Fir S28°E 14.8ft. "x" "BT"
Set: 3 1/2" Alum. Cap for Reference Monument
Stamped: 1/4 56 RM
1984
RPLS 1922

C. 1/4 CORNER
Set: 3 1/2" Alum. Cap
Stamped: T205 R10W
C 1/4 57
1985
Marked:
RPLS 1922
5" D. Fir S71°W 10.8ft. "C 1/4 57" "BT"
Set: 3 1/2" Alum. Cap for Reference
Monument Stamped: RM
57 C 1/4
N89°36'W
41.2'
1985 RLS 1922

1/4 CORNER 7 | 8
Found: 1971 Brasscap
Marked: 1/4 57
1971
4185
From which a:
18" D. Fir brs. (S69°E 26.6ft. 1971)
So badly "J" d can't tell where
to measure to.
11" Maple S30°W 58.4ft.
"Scribing visible" (59.43ft. 1971)
Marked:
10" D. Fir S43°E 44.6ft.
"1/4 58" "BT"

S. 1/16 CORNER 7 | 8
Found: 1971 Brasscap Marked: 5 1/2
57 | 58
1971
4185
From which a:
14" S. Maple N52°E 41.6ft.
"Scribe partially covered" (N56°E 45.7ft. 1971)
20" D. Fir N39°W 40.4ft. (1971)
"W/healed face"
Set: 3 1/2" Alum. Cap for Reference
Monument Stamped: RM
58
584-23W
44.5'
3 1/16
1985 RLS 1922

S.E. 1/16 CORNER
Set: 3 1/2" Alum. Cap Stamped: T205 R10W
SE 1/16
57
1985 RLS 1922
From which a:
19" W. Hemlock N78 1/2° E 27.6ft.
"SE 1/4 57" "BT"
Set: 3 1/2" Alum. Cap for Reference Monument
Stamped: RM SE 1/4 57
N5-17E 45.0ft.
1985 RLS 1922

SECTION CORNER 7 | 8
Found: Douglas Co. Brasscap Marked: County Surveyors Office
T205
57 | 58
518 | 517
R10W
1968
From which a:
18" Maple S22°E 56.0ft. "Healed Face" (24" 57.7ft. 1968)
Decayed Fir S40°W 50.2ft. "Face Pitch slab "W BT" (1874)
20" D. Fir stump S40°W 55.3ft. "Bark scribing visible "TROR10W317"
25" D. Fir snag (12ft.) S76°W 44.7ft. "Bark scribing visible "R10W"
29" Maple N81°E 7.0ft. "scars visible - severe lean" (1968)
Marked:
Concrete Nail in Large Sandstone Boulder
N63°W 10.7ft.

SECTION CORNER 7 | 8
Found: Douglas Co. Brasscap Marked: County Surveyors Office
T205
57 | 58
518 | 517
R10W
1968
From which a:
18" Maple S22°E 56.0ft. "Healed Face" (24" 57.7ft. 1968)
Decayed Fir S40°W 50.2ft. "Face Pitch slab "W BT" (1874)
20" D. Fir stump S40°W 55.3ft. "Bark scribing visible "TROR10W317"
25" D. Fir snag (12ft.) S76°W 44.7ft. "Bark scribing visible "R10W"
29" Maple N81°E 7.0ft. "scars visible - severe lean" (1968)
Marked:
Concrete Nail in Large Sandstone Boulder
N63°W 10.7ft.

PREPARED BY:
TIMBERLAND - McCULLOUGH, INC.
1010 AIRPORT ROAD S.E. - P.O. BOX 668
ALBANY, OREGON 97321 PH. 926-9404
Drawn By: LeRoy H. Pettijohn

NARRATIVE:
The purpose of this survey is to monument and mark the lines between the Siuslaw National Forest and private ownership in Sections 7 and 18 in T.20S., R.10W. and a resurvey of part of the range line between R.10W. and R.11W.
The Range line was originally surveyed by William Thiel in 1892 and resurveyed by Nathaniel Martin in 1894 as a completion of his subdivisional work he performed in 1892.
James Prochnau in 1971 surveyed the lines between sections 5, 6, 7 and 8 in CS# M41-77 and M43-56.
Richard Hintz in 1983 subdivided sections 8, 17 & 20 in CS# M90-42.
Don Peal in 1984 surveying in Sections 1 & 2, T.20S., R.11W., tied to the corners to 1 & 12 and 6 & 7 on the range line in CS# M94-64 & CS# M97-39. In CS# M94-64, Peal found what he felt was original evidence at the closing corner for 6 & 7 that had been set by proportion by Prochnau. After a thorough review of the evidence, Mr. Prochnau, the Douglas County Surveyor, representatives of Timberland - McCullough, and the Siuslaw N.F. agreed upon the position found by Mr. Peal.
Timberland - McCullough, Inc., in 1984, was contracted by the Siuslaw N.F. to subdivide Section 7 & 18 under the Sulphur Cadastral Survey. A difference of opinion arose to the positioning of the 1/4 corner between 7 & 18. The Douglas County Surveyor and the B.L.M. were contacted for opinions. The Douglas County Surveyor agreed with the Timberland - McCullough position. The B.L.M. agreed with the position of the forest service and in their letter dated October 25, 1984, stated that Martin's 1894 survey superseded a portion of his 1892 survey and that all 1/4 corners on the closing lines should be set by single proportion based on the official plat, even if original evidence was found. A substantial amount of discussion surrounded this point in which there was no final agreement between all the parties involved. After much consideration on this matter, a final decision was made to absolve Timberland - McCullough from the Professional liability under their contract and have the Land Surveyors of the Siuslaw N.F. complete this project under their professional license with the fieldwork and platting necessary to complete the project performed by Timberland - McCullough.
A review of the corners on this project:
1) 1/4 between 18 & 19 -- This corner had been reestablished from original Martin evidence by Douglas County in 1968. This position is harmonious with a proportion position (as regarded by the B.L.M.) and since it was restored in good faith based on evidence at that time, it is accepted as the position for this corner.
2) 1/4 between 7 & 18 -- The position of this corner was determined at single proportion. With the conflict in history to protect the rights of the landowners, we determined this to be the best decision.
(see Sheet 2 of 2 for continuation)

LEGEND:
o Indicates Corner Established
o Indicates Corner Reestablished
o Indicates Corner Found
H H H H H H H H Previously Posted
--- Indicates line posted w/ U.S.F.S.
Boundary Sign Posts
S.N.F. = Siuslaw National Forest
P.V.T. = Private Ownership
< > = Thiel
() = Martin
[] = Prochnau
() = Hintz

SECTION CORNER 6 | 5
Found: 1971 Brasscap
Marked: T205 R10W
6 | 5
7 | 8
1971
4185
From which a:
8" Alder N54°W 10.3ft.
"Bark scribe face high"
(10.8ft. 1971)
30" Fir stump S74°E 60.0ft.
"Bark scribed" "RENW 38"
(59.60ft. 1971)
60" Fir stump S80°W 42.27ft.
"Bark scribed" "BT 57"
(40.78ft. 1971)
Spruce is windthrown (1971)
Marked:
7" Alder S48°E 47.1ft.
"T205 R10W 58" "BT"
11" Alder N70°E 22.2ft.
"T205 R10W 55" "BT"
Set: 3 1/2" Alum. Cap for
Reference Monument
Marked: T205 R10W 56 RM
980-10E 72.4ft.
1984
RPLS 1922

1/4 CORNER 6 | 7
Set: 3 1/2" Alum. Cap
Stamped: T205 R10W
1/4 56
1984
From which a:
RPLS 1922
Brasscap by J. Prochnau brs.
N69°51'20" W 7.99ft.
From which a: 18" Fir stump N72°E 28.23ft.
26" Fir stump S52°E 13.4ft.
Marked:
5" D. Fir S28°E 14.8ft. "x" "BT"
Set: 3 1/2" Alum. Cap for Reference Monument
Stamped: 1/4 56 RM
1984
RPLS 1922

C. 1/4 CORNER
Set: 3 1/2" Alum. Cap
Stamped: T205 R10W
C 1/4 57
1985
Marked:
RPLS 1922
5" D. Fir S71°W 10.8ft. "C 1/4 57" "BT"
Set: 3 1/2" Alum. Cap for Reference
Monument Stamped: RM
57 C 1/4
N89°36'W
41.2'
1985 RLS 1922

1/4 CORNER 7 | 8
Found: 1971 Brasscap
Marked: 1/4 57
1971
4185
From which a:
18" D. Fir brs. (S69°E 26.6ft. 1971)
So badly "J" d can't tell where
to measure to.
11" Maple S30°W 58.4ft.
"Scribing visible" (59.43ft. 1971)
Marked:
10" D. Fir S43°E 44.6ft.
"1/4 58" "BT"

S. 1/16 CORNER 7 | 8
Found: 1971 Brasscap Marked: 5 1/2
57 | 58
1971
4185
From which a:
14" S. Maple N52°E 41.6ft.
"Scribe partially covered" (N56°E 45.7ft. 1971)
20" D. Fir N39°W 40.4ft. (1971)
"W/healed face"
Set: 3 1/2" Alum. Cap for Reference
Monument Stamped: RM
58
584-23W
44.5'
3 1/16
1985 RLS 1922

S.E. 1/16 CORNER
Set: 3 1/2" Alum. Cap Stamped: T205 R10W
SE 1/16
57
1985 RLS 1922
From which a:
19" W. Hemlock N78 1/2° E 27.6ft.
"SE 1/4 57" "BT"
Set: 3 1/2" Alum. Cap for Reference Monument
Stamped: RM SE 1/4 57
N5-17E 45.0ft.
1985 RLS 1922

SECTION CORNER 7 | 8
Found: Douglas Co. Brasscap Marked: County Surveyors Office
T205
57 | 58
518 | 517
R10W
1968
From which a:
18" Maple S22°E 56.0ft. "Healed Face" (24" 57.7ft. 1968)
Decayed Fir S40°W 50.2ft. "Face Pitch slab "W BT" (1874)
20" D. Fir stump S40°W 55.3ft. "Bark scribing visible "TROR10W317"
25" D. Fir snag (12ft.) S76°W 44.7ft. "Bark scribing visible "R10W"
29" Maple N81°E 7.0ft. "scars visible - severe lean" (1968)
Marked:
Concrete Nail in Large Sandstone Boulder
N63°W 10.7ft.

SECTION CORNER 12/13

SECTION CORNER 13/18

Found: 24" Fir Corner Tree and Douglas Co. Brasscap
Marked: County Surveyors Office

Found: Douglas County Brasscap
Marked: County Surveyors Office

U.S. FOREST SERVICE SULPHUR CADASTRAL SURVEY

COUNTY SURVEYORS FILE DATA
DO NOT REMOVE FROM OFFICE

SIUSLAW NATIONAL FOREST Contract No. 53-0470-4-2010N

SECTION 18, T.20S., R.10W., W.M., DOUGLAS COUNTY, OREGON

SCALE - 1" = 500'
500 0 100
FEET METERS
IMETER = 3.28084 FT.

See Field Books 1-20

From which a:
60" Cedar S29 1/2° W 36.7 ft.
"Scribing visible" (35.9 ft. 1968)
Cedar stub N65° W 6.0 ft.
48" D. Fir S78° E 19.3 ft.
"Bark scribing visible"
(S71 1/2° E 9.9 ft. 1892)
50" Cedar N86° W 20.3 ft.
"Scribing visible"
(18.5 ft. 1968)

From which a:
56" D. Fir S10° E 8.2 ft.
"Bark scribing over
healed face (10.56 ft. 1894)
38" D. Fir N34° W 27.2 ft.
"Bark scribing over healed
face" (N36° W 29.0 ft. 1894)
9" Hemlock N45° E 38.7 ft.
"Scribing visible" (39.2 ft. 1968)

1/4 CORNER S.13 ONLY

Set: Alum. Surv-Kap on 3/8"
Iron Rod in rock
Stamped: T205
R11W R10W
1/4 S13
1985
RLS 1922

From which a:
32" D. Fir N39° E 16.1 ft.
"1/4 S18" "BT"
12" Maple S61° E 68.3 ft.
"x" "BT"

T.20S., R.11W.
N0°59'04"E 2554.69'
2304.32'
T.20S., R.10W.
466.48'
(7.50 CHS.)

(North 45.50 CHS.)
51°22'40"W 2650.45'
2184.97'
331.59'

(North 80.00 CHS.)
51°22'40"W 2650.45'
2184.97'
331.59'

(North 41.00 CHS.)
N0°08'20"E 2749.65'
1257.67'
2494.09'

(North 80.00 CHS.)
N0°23'27"E 2575.20'
(North 40.50 CHS.)
40.50 CHS.)

SECTION CORNER 13/24

Found: Douglas Co. Brasscap
Marked: T205

R 513 R
W 524 W
1968

From which a:
48" D. Fir stump West 8.8 ft.
"Healed face & Bark scribing"
(S81° W 9.9 ft. 1892)
28" D. Fir stump N62° W 8.4 ft.
"Healed face" (N74° W 8.6 ft. 1892)
15" Cedar stump N46° W 14.8 ft.
"Scribing visible on face which
never healed" (N56° W 15.6 ft. 1968)

S. 1/16 CORNER S.18 ONLY

Set: 3/8" Alum. Cap
Stamped: T205
R11W R10W
5/16 S18
1985
RLS 1922

Marked:
30" D. Fir S35° E 23.8 ft.
"5/16 S18" "BT"
Set: 3/8" Alum. Cap for
Reference Monument
Stamped: RM
5/16 S18
588-53W
46.0
1985 RLS 1922
N89°32'19"W

1/4 CORNER S.19 ONLY

Set: 3/8" Alum. Cap
Stamped: T205
R11W R10W
1/4 S19
1984
RLS 1922

Marked:
7" D. Fir S10° E 2.4 ft.
"1/4 S19" "BT"
10" D. Fir N38° E 21.2 ft.
"1/4 S19" "BT"

N1°41'55"E
97.32' (1.50 CHS.)

SECTION CORNER 24/19

Found: Douglas Co. Brasscap
Marked: T205

R 518 R
W 519 W
1968

From which a:
23" Maple N85° E 35.5 ft.
"Chopped out face. New
scribing above old face"
(N85° E 39.0 ft. 1894) (39.6 ft. is slope)
26" Maple S21° E 42.7 ft. w/Healed
face - some scribing visible (1968)

1/4 CORNER S.24 ONLY

Set: 3/8" Alum. Cap
Stamped: R11W T205 R10W
1/4 S24
1984
RPLS 1922

Marked:
6" D. Fir N46° W 16.6 ft.
"1/4 S24" "BT"
9" D. Fir S43° W 16.6 ft.
"1/4 S24" "BT"

(North 80.00 CHS.)
N0°23'27"E 2575.20'
(North 40.50 CHS.)
40.50 CHS.)

(North 80.00 CHS.)
N0°23'27"E 2575.20'
(North 40.50 CHS.)
40.50 CHS.)

(North 80.00 CHS.)
N0°23'27"E 2575.20'
(North 40.50 CHS.)
40.50 CHS.)

(North 80.00 CHS.)
N0°23'27"E 2575.20'
(North 40.50 CHS.)
40.50 CHS.)

(North 80.00 CHS.)
N0°23'27"E 2575.20'
(North 40.50 CHS.)
40.50 CHS.)

1/4 CORNER 7/18

Set: 3/8" Alum. Cap
Stamped: T205
R10W
1/4 S7
1984
RPLS 1922

Marked:
8" Alder S74° E 29.7 ft.
"Bark Scribed" "1/4 S18" "BT"
10" D. Fir S69° W 26.9 ft.
"x" "BT"

Set: 3/8" Alum. Cap for
Reference Monument
Stamped: RM
1/4 S18
N1-17E
40.7 ft.
1985 RLS 1922

Marked:
29" Red Cedar S67° W 38.7 ft.
"1/4 S18" "BT"
51" Red Cedar N7° W 58.3 ft.
"1/4 S7" "BT"

Set: 3/8" Alum. Cap
Stamped: T205
R10W
1/4 S7
1985
RLS 1922

Marked:
19" D. Fir S38 1/2° W 51.0 ft.
"C1/4 S18" "BT"
Set: 3/8" Alum. Cap for
Reference Monument
Stamped: RM
C1/4 S18
N12-54W
63.3 ft.
1985 RLS 1922

Marked:
18" Alder N69° W 8.1 ft.
"Bark Scribed"
"5/16 S18" "BT"
Set: 3/8" Alum. Cap for
Reference Monument
Stamped: RM
5/16 SW 1/4
540-18W
57.9
1985 RLS 1922

Marked:
19" D. Fir N57° E 14.2 ft.
"C5 1/16 S18" "BT"
15" D. Fir S51° W 38.4 ft.
"C5 1/16 S18" "BT"

Marked:
1985 RLS 1922

Marked:
1985 RLS 1922

Marked:
1985 RLS 1922

Marked:
1985 RLS 1922

Marked:
1985 RLS 1922

Marked:
1985 RLS 1922

W.P. N-18

Set: 3/8" Alum. Cap
Stamped: T205 R10W
W.P. N-18
N 518
1985
RPLS 1922

Set: 3/8" Iron Rod in Center
line of Co. Rd. for R.P.'s
588° E 37.55 ft.
528° E 38.40 ft.

Marked:
1985 RLS 1922

Marked:
1985 RLS 1922

Marked:
1985 RLS 1922

Marked:
1985 RLS 1922

Marked:
1985 RLS 1922

Marked:
1985 RLS 1922

Marked:
1985 RLS 1922

Marked:
1985 RLS 1922

Marked:
1985 RLS 1922

Marked:
1985 RLS 1922

Marked:
1985 RLS 1922

Marked:
1985 RLS 1922

W.P. 18/17

Set: 3/8" Alum. Cap
Stamped: T205 R10W
W.P.
S18 S17
1985
RPLS 1922

Set: 3/8" Iron Rods in Center
line of Co. Rd. for R.P.'s
588° E 37.55 ft.
528° E 38.40 ft.

Marked:
1985 RLS 1922

Marked:
1985 RLS 1922

Marked:
1985 RLS 1922

Marked:
1985 RLS 1922

Marked:
1985 RLS 1922

Marked:
1985 RLS 1922

Marked:
1985 RLS 1922

Marked:
1985 RLS 1922

Marked:
1985 RLS 1922

Marked:
1985 RLS 1922

Marked:
1985 RLS 1922

Marked:
1985 RLS 1922

Marked:
1985 RLS 1922

Marked:
1985 RLS 1922

SECTION CORNER 7/18

Found: Douglas Co. Brasscap
Marked: County Surveyors Office

T205
S18 S17
1985
RPLS 1922

From which a:
18" Maple S22° E 56.0 ft. "Healed
face" (24" 57.7 ft. 1968)
Decayed Fir S40° W 50.2 ft. "Face
Pitch slab" "W 87" (1874)
20" D. Fir stump S40° W 55.3 ft.
"Bark scribing visible" "TROR10WS17"
25" D. Fir snag (12 ft.) S76° W 44.7 ft.
"Bark scribing visible" "R10W"
29" Maple N81° E 7.0 ft. "Scars
visible-severe lean" (1968)

Marked:
Concrete Nail in Large Sandstone
Boulder N63° W 10.7 ft.
Set: 3/8" Alum. Cap for Reference
Monument Stamped: T205 R10W
RM S18
N1-14E 49.3
1985 RLS 1922

1/4 CORNER 18/17

Set: 3/8" Alum. Cap
Stamped: T205
S18 S17
1984
RPLS 1922

Marked:
4" Alder S74° W 57.3 ft.
"1/4 S18" "BT"
Set: 3/8" Alum. Cap for Reference
Monument Stamped: RM
1/4 S17
513-56W 54.7 ft.
1984
RLS 1922

SECTION CORNER 18/19

Found: Douglas Co. Brasscap
Marked: T205

S18 S17
S19 S20
R10W
1968

From which a:
19" Hemlock stub N69 1/2° E
(36.0 ft. 1968) Badly decayed
30" Rotted Hemlock stub
S31° E 4.2 ft. w/axe marks
10" Alder N84° E 43.2 ft.
w/Partially healed face &
Scribing visible (N84° E
43.6 ft. 1968)
10" Hemlock N48° W 10.0 ft.
w/Healed face
(N48° W 10.0 ft. 1968)
15" D. Fir S48° W 28.4 ft. w/
Pitched over face
(S48° W 28.4 ft. 1968)
Marked:
8" Hemlock S42° E 4.1 ft.
"T205 R10WS20" "BT"

Marked:
1985 RLS 1922

Marked:
1985 RLS 1922

Marked:
1985 RLS 1922

Marked:
1985 RLS 1922

Marked:
1985 RLS 1922

Marked:
1985 RLS 1922

NARRATIVE (CON'T.)

3) 1/4 between 6 & 7 -- Based on the positions of the original controlling corners, with the skew they created, there was no other option left except single proportion.

4) 1/4 to 24 only -- A review of this mile of line has shown that Martin's measurements and topographic calls were very consistent with Thiel's. No remains of the corner tree or bearing trees were found, but topographic calls within 3 chains of the corner position were found to be harmonious with the record and were used to restore this corner. The proportionate position did not fit the topographic calls and it was deemed to be the improper method for restoration of this corner.

5) 1/4 to 13 only -- A review of this mile of line has shown that Martin's measurements appear to have a blunder in the northerly half mile. His notes did agree with Thiel's that the corner lay approximately 1/2 chain out of a small draw. In Prochnau's survey, his plat shows him finding a windfall with a BT tag which he used. In a review of this evidence, the windfall thought to be the tree (tag is now gone) was seen open but no scribing was found. After consideration of the evidence, to protect Prochnau's Record of Survey M43-56, which is of no consequence to any subsequent work, his position was computed at the call bearing and distance from his record information (this position and one created from the possible tree, did not match very well) The position used is harmonious with the calls returned by Thiel and Martin from the draw.

6) 1/4 to 17 & 18 -- No evidence of the original corner was found and this corner was set by single proportion. Our basis of bearings was determined by a solar observation.

All of our work was completed by a closed traverse technique utilizing either a Wild T-2 or T-16 theodolite with a DI-4L Distomat electronic distance meter.

All monuments set are magnetized 3/16" x 30" aluminum pipes with flared bottoms and aluminum caps provided by the U.S. Forest Service. Bearing trees established by this survey have a double blaze with a brass washer nailed into the lower blaze. Measurements to bearing trees established by this survey are to an aluminum nail driven at the center of the tree approximately one foot above the root collar. Bearings to bearing trees were determined by hand compass.

Bearing trees established by this survey are marked in accordance with the 1973 B.L.M. Manual of Survey Instructions unless otherwise noted.

Any Alder bearing trees established by this survey are bark scribed. Reference monuments set are within one minute of true bearing and 1/10 of a foot in distance.

We, Michael J. Schwartz and Lawrence W. Hunnemuller, Registered Land Surveyors in the State of Oregon, hereby certify that this plat and the notes hereon are a true and correct representation of a survey we performed during 1984 and 1985 at the request of the USDA, Forest Service in accordance with the statutes of the State of Oregon and the BLM Manual of Surveying Instructions, 1973.

Lawrence W. Hunnemuller
Michael J. Schwartz
4077 S.W. Research Way
P O Box 1148
Corvallis, OR 97339
Phone (503) 757-4486

REGISTERED PROFESSIONAL LAND SURVEYOR

REGISTERED PROFESSIONAL LAND SURVEYOR

OREGON
AUGUST 22, 1975
L. W. HUNNEMULLER
1050

OREGON
JULY 18, 1980
MICHAEL J. SCHWARTZ
1822

PREPARED BY:
TIMBERLAND - McCULLOUGH, INC.
1010 AIRPORT ROAD S.E. - P.O. BOX 668
ALBANY, OREGON 97321 PH. 926-9404

SHEET 2 OF 2

JN1758

U.S. File No. 63/22
M99-79B

U.S. File No. 63/22
M99-79B