

FILED CMO
RECEIVED CMO
NOV 27 1985
COUNTY SURVEYOR
DOUGLAS COUNTY, ORE.
CMO

1/4 CORNER 10 & 15
FOUND: 1-1/4" IRON PIPE WITH DOUGLAS CO. BRASS CAP "1967"
36" FIR STUMP, N45W, 12.7' (CTR. MEAS.) - ORIG. B.T., NO MARKS
33" FIR STUMP, S20W, 15.8' (CTR. MEAS.) - ORIG. B.T., NO MARKS
23" MAPLE, N85E, 11.5' (CTR. MEAS.) - SCRIBE VISIBLE
18" FIR, N32-1/2E, 9.4' - DIST. TO "W" NAIL
14" FIR, S18E, 5.6' - DIST. TO "W" NAIL

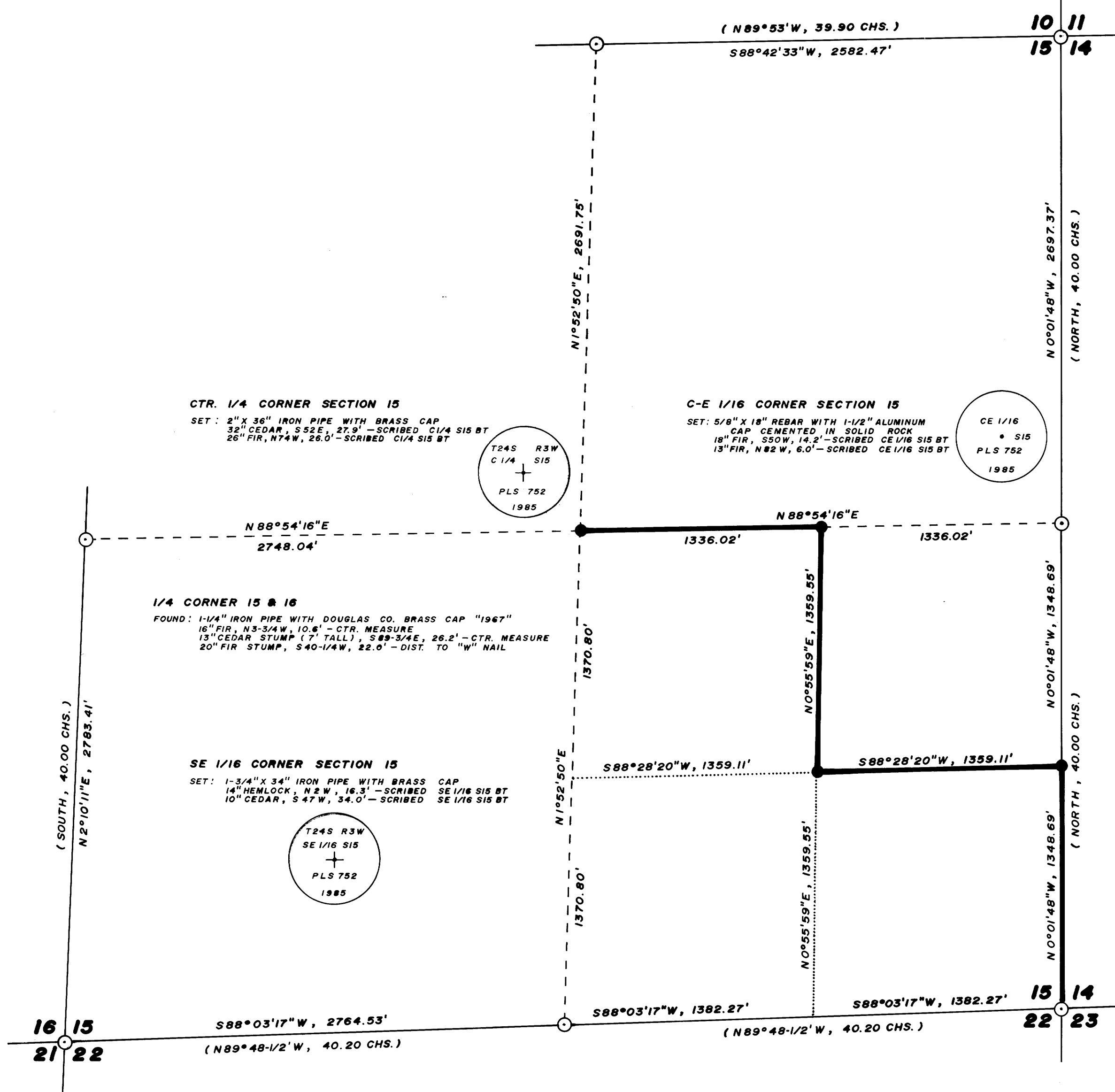
SECTION CORNER 10, 11, 14, 15
FOUND: 1-3/4" IRON PIPE WITH BRASS CAP "1983" (C.S. NO. M90-48)
27" FIR, N27E, 11.3' - DIST. TO "W" NAIL
19" HEMLOCK, S23E, 45.5' - DIST. TO "W" NAIL
24" FIR, S23W, 43.4' - DIST. TO "W" NAIL
58" FIR STUMP, N20W, 27.4' - DIST. TO "W" NAIL
NOTE: 2" ALUMINUM PIPE SET BY WEYERHAEUSER CO. BEARS S30°27'17"W, 15.50'

- NARRATIVE -

THIS SURVEY WAS MADE IN NOVEMBER, 1985 BY DONALD L. PEEL OF PEEL BAKER LAND SURVEYING INC., 1262 LAWRENCE STREET-SUITE 4, EUGENE, OREGON 97401. THE PURPOSE OF THIS SURVEY WAS TO LOCATE AND MARK SOME OF THE PROPERTY LINES AND ESTABLISH THE PROPERTY CORNERS OF THE LAND OWNED BY WEYERHAEUSER CO. IN THE SE 1/4 SEC. 15, T24S, R3W, W.M. A KERN K1M THEODOLITE AND DM 502 EDM. WERE USED TO PERFORM THIS SURVEY. A RANDOM TRANSIT TRAVERSE WITH A MINIMUM ERROR OF CLOSURE OF 1/10,000' WAS RUN TO TIE THE WEST 1/4 CORNER. THE REMAINDER OF THE CONTROL WAS ESTABLISHED BY THIS FIRM IN A 1983 SURVEY (C.S. FILE NO. M90-48). BEARINGS WERE BASED ON A SOLAR OBSERVATION AS ESTABLISHED IN SAID C.S. NO. M90-48. THE CENTER 1/4 CORNER AND THE SE 1/16 CORNER WERE SET AT THE POINT OF INTERSECTION OF NORTH-SOUTH AND EAST-WEST CENTERLINES. THE SOUTH 1/16 CORNER BETWEEN SECS. 14 AND 15 WAS SET AT MIDPOINT BETWEEN THE EAST 1/4 CORNER AND THE SOUTHEAST SECTION CORNER. THE C.E. 1/16 CORNER WAS SET AT MIDPOINT BETWEEN THE CENTER 1/4 AND THE EAST 1/4 CORNERS. THE POSITION FOR THE EAST 1/16 CORNER BETWEEN SECS. 15 AND 22 WAS DETERMINED, BUT NOT SET, AT MIDPOINT BETWEEN THE SOUTH 1/4 CORNER AND SOUTHEAST SECTION CORNER. THE POSITION FOR THE C.S. 1/16 CORNER WAS DETERMINED, BUT NOT SET, AT THE MIDPOINT BETWEEN THE CENTER 1/4 AND THE SOUTH 1/4 CORNERS. A RANDOM TRANSIT TRAVERSE WAS RUN NEAR THE PROPERTY LINES TO BE MARKED. OFFSETS FROM THE RANDOM LINE TO THE TRUE PROPERTY LINE WERE CALCULATED AND USED TO DETERMINE THE POSITION OF THE TRUE LINE. THE TRUE PROPERTY LINE WAS MARKED IN THE FIELD BY BLAZING TREES ON BOTH SIDES OF THE TRUE LINE (BLAZES NOTCHED AND PAINTED RED). ALL CORNERS SET IN THIS SURVEY WERE MONUMENTED WITH IRON PIPES AND BRASS CAPS (AS NOTED ON PLAT) AND WERE REFERENCED BY SCRIBING BEARING TREES. THE DISTANCE TO ALL BEARING TREES SET IN THIS SURVEY WAS MEASURED TO A "W" NAIL IN THE LOWER BLAZE AND THE BEARINGS ARE MAGNETIC, VAR. 20°.

1/4 CORNER 14 & 15
FOUND: 1-3/4" IRON PIPE WITH BRASS CAP "1983" (C.S. NO. M90-48)
50" FIR STUMP, N24E, 27.7' - DIST. TO "W" NAIL
26" CEDAR, N42W, 45.9' - DIST. TO "W" NAIL
NOTE: 1/2" MONEL PIPE SET BY WEYERHAEUSER CO. BEARS S42°12'56"W, 13.66'

S 1/16 CORNER 14 & 15
SET: 2" X 45" IRON PIPE WITH BRASS CAP
26" FIR, S85E, 10.8' - SCRIBED S1/16 S14 BT
15" FIR, N8W, 7.0' - SCRIBED S1/16 S15 BT



CTR. 1/4 CORNER SECTION 15
SET: 2" X 36" IRON PIPE WITH BRASS CAP
32" CEDAR, S52E, 27.9' - SCRIBED C1/4 S15 BT
26" FIR, N74W, 26.0' - SCRIBED C1/4 S15 BT

C-E 1/16 CORNER SECTION 15
SET: 5/8" X 18" REBAR WITH 1-1/2" ALUMINUM CAP CEMENTED IN SOLID ROCK
18" FIR, S50W, 14.2' - SCRIBED CE 1/16 S15 BT
13" FIR, N82W, 6.0' - SCRIBED CE 1/16 S15 BT

1/4 CORNER 15 & 16
FOUND: 1-1/4" IRON PIPE WITH DOUGLAS CO. BRASS CAP "1967"
16" FIR, N3-3/4W, 10.6' - CTR. MEASURE
13" CEDAR STUMP (7' TALL), S89-3/4E, 26.2' - CTR. MEASURE
20" FIR STUMP, S40-1/4W, 22.0' - DIST. TO "W" NAIL

SE 1/16 CORNER SECTION 15
SET: 1-3/4" X 34" IRON PIPE WITH BRASS CAP
14" HEMLOCK, N2W, 16.3' - SCRIBED SE 1/16 S15 BT
10" CEDAR, S47W, 34.0' - SCRIBED SE 1/16 S15 BT

SECTION CORNER 15, 16, 21, 22
FOUND: U.S. G.L.O. IRON PIPE WITH BRASS CAP "1950"
13" MAPLE, N10W, 12.8' - DIST. TO "W" NAIL
9" MAPLE, N80-1/2W, 21.9' - DIST. TO "W" NAIL
11" FIR, S74E, 78.5' - DIST. TO "W" NAIL
10" FIR, S43W, 22.8' - DIST. TO "W" NAIL

1/4 CORNER 15 & 22
FOUND: 1-5/8" IRON PIPE WITH BRASS CAP "1983" (C.S. NO. M90-48)
18" FIR, S11E, 21.3' - DIST. TO "W" NAIL
19" FIR, N76W, 73' - DIST. TO "W" NAIL

SECTION CORNER 14, 15, 22, 23
FOUND: 1-5/8" IRON PIPE WITH BRASS CAP "1983" (C.S. NO. M90-48)
19" FIR, N7E, 35.1' - DIST. TO "W" NAIL
19" FIR, S39E, 23.4' - DIST. TO "W" NAIL
15" HEMLOCK, S90W, 33.1' - DIST. TO "W" NAIL
25" FIR, N46-1/2W, 19.9' - DIST. TO "W" NAIL

Donald L. Peel

**SURVEY IN
SE 1/4 SEC. 15, T24S, R3W, W.M.
DOUGLAS COUNTY, OREGON**
FOR
WEYERHAEUSER CO.
BY
PEEL BAKER LAND SURVEYING INC.
NOVEMBER 13, 1985

MAP FILE M99-77

MAP FILE M99-77