

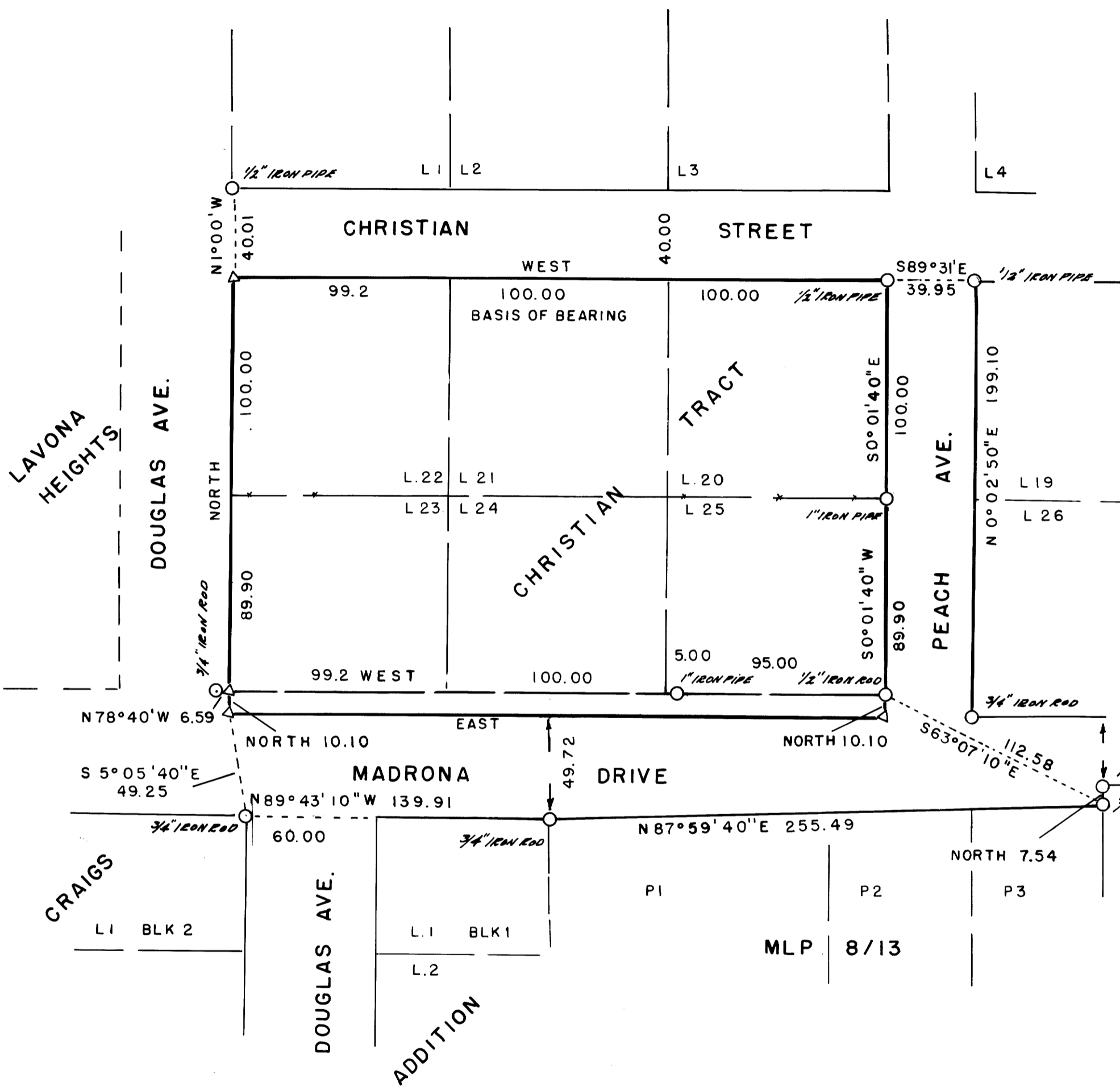
FILED CMO
RECEIVED *1/2*

NOV 18 1985

COUNTY SURVEYOR
DOUGLAS COUNTY, ORE.
CMO

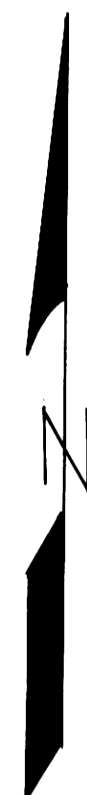
SURVEY IN
SW 1/4 S22 T29S R5W WM.

C.S. FILE 63 / 2 (M)
Map File M 99-75



LEGEND

- FOUND AS NOTED
- ◁ CALCULATED POINT



SEE ALSO ACCOMPANYING NARRATIVE

CITY of MYRTLE CREEK

NOVEMBER 1985

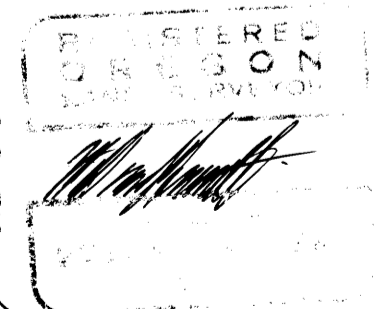
SCALE 1"=50'

SURVEYED BY: WILLIAM J. RUPPERT

P.O. Box 940

MYRTLE CREEK, OR. 97157

COUNTY SURVEYORS FILE DATA
DO NOT REMOVE FROM OFFICE



C.S. FILE 63 / 2 (M)
Map File M 99-75

M 99-75
City of Myrtle Creek
Myrtle Creek, Oregon 97457

FILED
RECEIVED *HL*

NOV 18 1985

October 12, 1985

COUNTY SURVEYOR
DOUGLAS COUNTY, ORE.

SURVEY NARRATIVE

LOCATION: SW $\frac{1}{4}$ of S22, T29S, R5W, WM, Douglas County, in the City of Myrtle Creek.

PURPOSE: This survey was made due to the confusion about the location the right-of-way of Madrona Drive, which was caused in part by the monuments per survey CS 58/151 along with a monument (no record) near the SW corner of lot 23 of Christian Tract. Monuments per Craigs Addition and MLP 8/13 were tied to show the actual road right-of-way in the vicinity. Descriptions for more right-of-way are being made.

BOUNDARY CONTROL AND BASIS OF BEARING: I adopted the north lines of lots 20 to 22 as shown on the accompanying plat as the basis of bearing. Record distances were held to establish the position of missing monuments in Christian Tract. The lines of Christian Tract as shown on the accompanying plat are in general agreement with possession lines; however there are no definite possession lines along the frontage of Madrona Drive and Christian Tract.

EQUIPMENT: Lietz T60D Theodolite, Beetle EDM, and 100' tape.

SURVEYED BY: William J. Ruppert, an employee of the City of Myrtle Creek.

