

NORTH 1/4 CORNER SECTION 13

FD. 1962 DOUGLAS COUNTY BRASS CAP
 15" OAK, S18°W, 43.4' (SCAR VIS.), 1962 C.S.B.T.
 16" FIR, N09°W, 38.1' (SCAR VIS.), 1962 C.S.B.T.
 E-W-N FENCE CORNER BEARS S60°W, 13.7'

"A" N.E. CORNER D.L.C. NO. 38

FD. 1 1/2" IRON PIPE AND BRASS CAP SET IN SURVEY M84-39
 24" DOWNED OAK, N04°E, 153.1' (BADLY BURNED), 1856 B.T.
 30" DOWNED OAK, N12°W, 70.0' (FACE VIS.), 1856 B.T.
 16" FIR, N56°W, 10.9' (SCRIBE VIS.), 1980 B.T.
 18" FIR, N73°E, 16.6' (SCRIBE VIS.), 1980 B.T.

"B" N.W. CORNER D.L.C. NO. 38

FD. 18" DOWNED OAK, S57°E, 143.2' (NEGATIVE SCRIBE VIS.), 1856 B.T.
 SET 2 1/2" x 30" ALUMINUM PIPE AND CAP.
 (PURPLE M.M. BURIED UNDER PIPE)
 7" FIR, S60°E, 35.1' (SCRIBED/PAINTED RED)
 20" FIR, S34°W, 18.2' (SCRIBED/PAINTED RED)

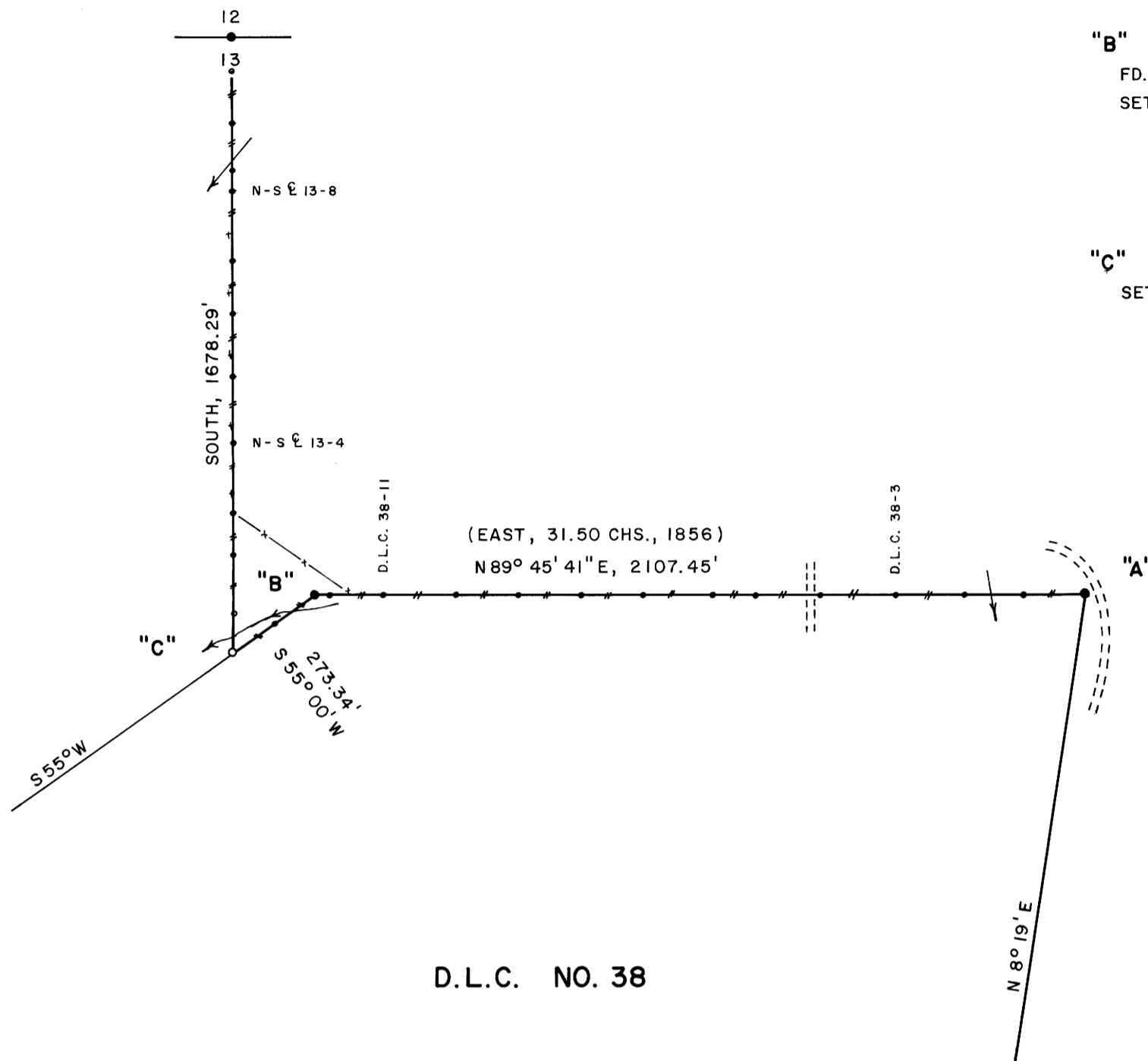
"C" PROPERTY CORNER

SET 2 1/2" x 30" ALUMINUM PIPE AND CAP
 (PURPLE M.M. BURIED UNDER PIPE)
 11" FIR, N65°E, 14.9' (SCRIBED/PAINTED RED)
 12" FIR, S29°W, 6.5' (SCRIBED/PAINTED RED)

COUNTY SURVEYORS FILE DATA
 DO NOT REMOVE FROM OFFICE

C10
 C.S. 63/18
 M99-71

SURVEY IN
N.E. 1/4 SEC. 13, T22S, R8W, W.M.
DOUGLAS COUNTY, OREGON
FOR
INTERNATIONAL PAPER COMPANY
BY
ROBERTS SURVEYING INC.
29 WEST 29TH STREET
EUGENE, OREGON 97405
SEPTEMBER 20, 1985



D.L.C. NO. 38

RECORDED
 PROCEEDINGS
 LAND SURVEYS
Les Roberts
 COUNTY CLERK
 CLATSOP COUNTY, OREGON

LEGEND

- CORNERS FOUND AND USED FOR CONTROL
- CORNERS SET, 2 1/2" x 30" ALUMINUM PIPE AND CAP. CAPS STAMPED S-T-R, DATE AND P.L.S. NO. 1039.
- LINES MARKED AND BLAZED THIS SURVEY.
- () DATA OF RECORD, 1856 G.L.O. SURVEY AND DANIEL WELLS D.L.C. NO. 38
- (M.M.) INDICATES LOCATION OF BURIED MAGNETIC MARKERS. MARKERS ARE FLUORESCENT ORANGE IN COLOR AND ARE BURIED, 12" TO 18" DEEP, ALONG LINE AS SHOWN.

BASIS OF BEARING, SOLAR OBSERVATION

ALL NEW B.T.'S ARE SCRIBED AND HAVE AN ALUMINUM WASHER STAMPED "P.L.S. 1039" NAILED TO LOWER BLAZE. SCRIBED BLAZES ARE PAINTED RED.

DISTANCES TO B.T.'S ARE CENTER MEASURE

ALL NEW B.T.'S HAVE A 6" STEEL SPIKE DRIVEN INTO THE CENTER OF THE TREE TO SERVE AS A CHAINING POINT FOR MEASURED DISTANCES.

SCALE 1" = 400'

LOCATION OF FENCE

D.L.C. COR.	WEST - SOUTH	FC. COR.
D.L.C. 38-1	, NORTH, 2.0'	TO FC.
D.L.C. 38-2	, NORTH, 4.0'	TO FC.
D.L.C. 38-3	, NORTH, 5.3'	TO FC.
D.L.C. 38-4	, NORTH, 3.4'	TO FC.
D.L.C. 38-5	, NORTH, 5.0'	TO FC.
D.L.C. 38-6	, NORTH, 4.2'	TO FC.
D.L.C. 38-7	, NORTH, 11.0'	TO FC.
D.L.C. 38-8	, NORTH, 8.5'	TO FC.
D.L.C. 38-9	, NORTH, 7.0'	TO FC.
D.L.C. 38-10	, SOUTH, 4.7'	TO FC.
D.L.C. 38-11	, SOUTH, 2.0'	TO FC.
N-S 13-3	, EAST, 1.0'	TO FC.
N-S 13-4	, EAST, 0.0'	TO FC.
N-S 13-5	, EAST, 0.0'	TO FC.
N-S 13-6	, EAST, 0.0'	TO FC.
N-S 13-7	, EAST, 0.0'	TO FC.
N-S 13-8	, EAST, 0.0'	TO FC.
N-S 13-9	, NO FENCE	

NARRATIVE

THE PURPOSE OF THIS SURVEY IS TO BLAZE AND POST THE NORTH LINE OF D.L.C. NO. 38. AND TO INTERSECT THE N-S 13 OF SECTION 13 WITH THE WESTERLY BOUNDARY OF D.L.C. NO. 38. THESE TWO BOUNDARIES ARE ALSO TO BE BLAZED AND POSTED. THE N.E. CORNER AND N.W. CORNER OF D.L.C. NO. 38 WERE FOUND IN THE FIELD. THE NORTH 1/4 CORNER OF SECTION 13 WAS ALSO FOUND IN THE FIELD BUT ALONG THE SOUTH BOUNDARY OF SAID SECTION THE ORIGINAL 1856 S.E. CORNER, THE SOUTH 1/4 CORNER AND THE S.W. SECTION CORNER ALL HAVE BEEN LOST FOR YEARS AS NOTED BY FLOYD J. COLE IN HIS 1913 SURVEY FOR THE BINDER BROTHERS. SEE C.S. VOLUME 2, PAGE 185 DOUGLAS COUNTY SURVEYORS OFFICE. RATHER THAN USE DOUBLE AND SINGLE PROPORTIONATE MEASUREMENT TO RE-ESTABLISH THE SOUTH 1/4 CORNER FOR THE PURPOSE OF ESTABLISHING THE N-S 13, I CHOOSE TO ESTABLISH THE N-S 13 OF SECTION 13 BY RUNNING A LINE DUE SOUTH, BASIS OF BEARING IS SOLAR OBSERVATION, FROM SAID NORTH 1/4 CORNER. I CHOOSE THIS METHOD FOR TWO REASONS. 1) THIS WAS THE METHOD USED BY FLOYD J. COLE IN 1913 TO SURVEY THIS PROPERTY. 2) THIS METHOD ESTABLISHES SAID N-S 13 ALONG AN OLD EXISTING FENCE LINE FOUND IN THE FIELD. SEE FENCE LOCATION SUMMARY. CORNER "C" WAS SET BY INTERSECTION AS FOLLOWS. A LINE WAS RUN DUE SOUTH FROM THE NORTH 1/4 CORNER OF SECTION 13 TO ITS INTERSECTION WITH A LINE RUN S55°W (D.L.C. RECORD BEARING) FROM THE N.W. CORNER OF D.L.C. NO. 38, THUS THE RESULTING DISTANCES OF 1678.29 FEET AND 273.34 FEET RESPECTIVELY. A CLOSED MEANDER TRANSIT AND E.D.M. TRAVERSE WAS RUN BETWEEN ALL FOUND CORNERS AND USED FOR CONTROL. A CLOSED MEANDER TRANSIT AND E.D.M. TRAVERSE WAS RUN ALONG ALL BLAZED AND POSTED PROPERTY LINES. OFFSETS WERE COMPUTED FROM THIS MEANDER TRAVERSE TO THE TRUE PROPERTY LINE. PROPERTY LINES WERE MARKED WITH RED PAINTED BLAZES, RED RIBBON, YELLOW INTERNATIONAL PAPER PROPERTY LINE SIGNS, FLUORESCENT ORANGE MAGNETIC MARKERS AND 1/2" x 60" IRON REBAR WITH ALUMINUM CAPS, LOCATED AS SHOWN. IRON REBAR AND BURIED MAGNETIC MARKERS ARE REFERENCED BY A 3" x 3" ALUMINUM TAG NAILED TO A NEARBY TREE. TAG NOTES BEARING AND DISTANCE FROM TREE TO IRON ROD OR BURIED MAGNETIC MARKER.

LOCATION OF MAGNETIC MARKERS		
D.L.C. COR.	0'	WEST
D.L.C. 38-1	163'	WEST (M.M.)
D.L.C. 38-2	323'	WEST (M.M. & REBAR)
D.L.C. 38-3	516'	WEST (M.M.)
D.L.C. 38-4	726'	WEST (M.M. & REBAR)
D.L.C. 38-5	901'	WEST (M.M.)
D.L.C. 38-6	1020'	WEST (M.M. & REBAR)
D.L.C. 38-7	1208'	WEST (M.M.)
D.L.C. 38-8	1381'	WEST (M.M. & REBAR)
D.L.C. 38-9	1547'	WEST (M.M.)
D.L.C. 38-10	1726'	WEST (M.M. & REBAR)
D.L.C. 38-11	1925'	WEST (M.M.)
D.L.C. 38-12	2069'	WEST (M.M.)
D.L.C. 38-13	2080'	WEST (NO M.M.)
D.L.C. COR.	2107'	WEST (M.M. & FC. POST)
D.L.C. 38-14	137'	S55°W (M.M.)
PROP. COR.	273'	S55°W (M.M. & FC. POST)
N-S 13-1	111'	NORTH (M.M.)
N-S 13-2	268'	NORTH (M.M.)
N-S 13-3	387'	NORTH (M.M. & REBAR)
N-S 13-4	578'	NORTH (M.M.)
N-S 13-5	752'	NORTH (M.M. & REBAR)
N-S 13-6	931'	NORTH (M.M.)
N-S 13-7	1072'	NORTH (M.M. & REBAR)
N-S 13-8	1262'	NORTH (M.M.)
N-S 13-9	1323'	NORTH (M.M. & REBAR)
N-S 13-10	1454'	NORTH (M.M.)
N-S 13-11	1590'	NORTH (M.M.)
N. 1/4 COR.	1678'	NORTH (FC. POST)

M99-71
 C.S. 63/18